

# Finna's vision



2025–2028

1

Big picture

2

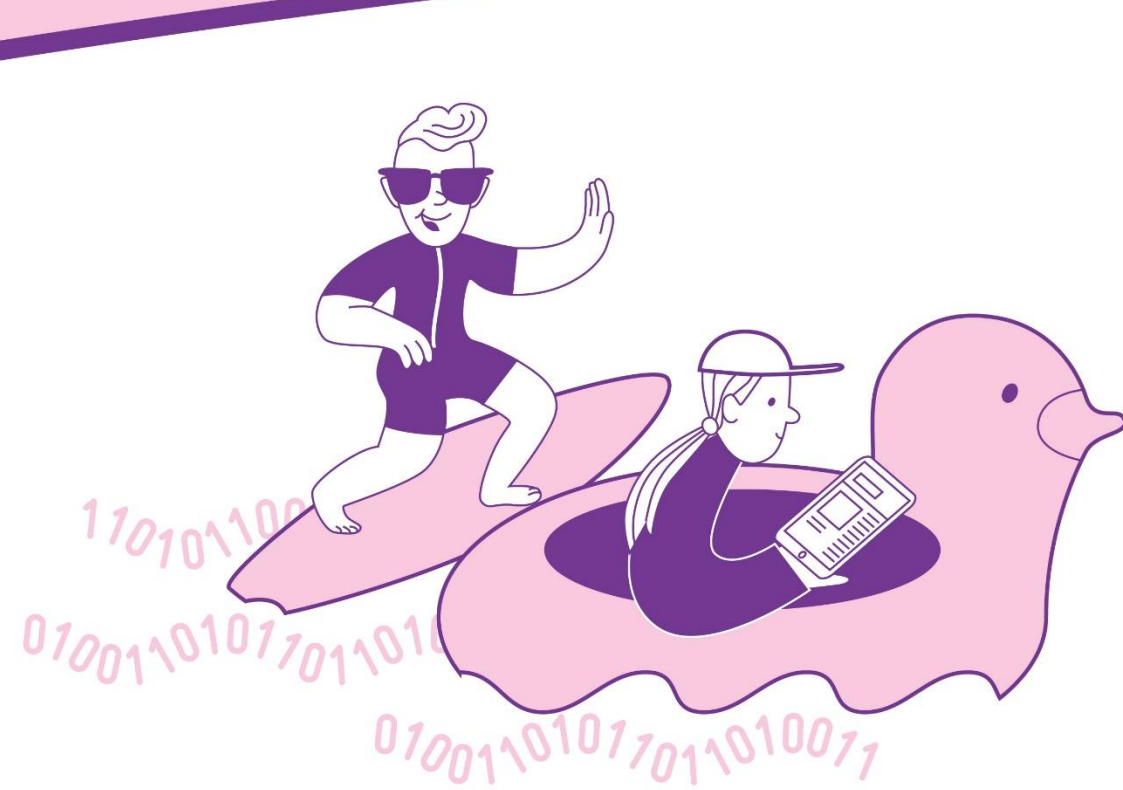
Core function

3

Priorities

FINNA'S VISION 2025-2028

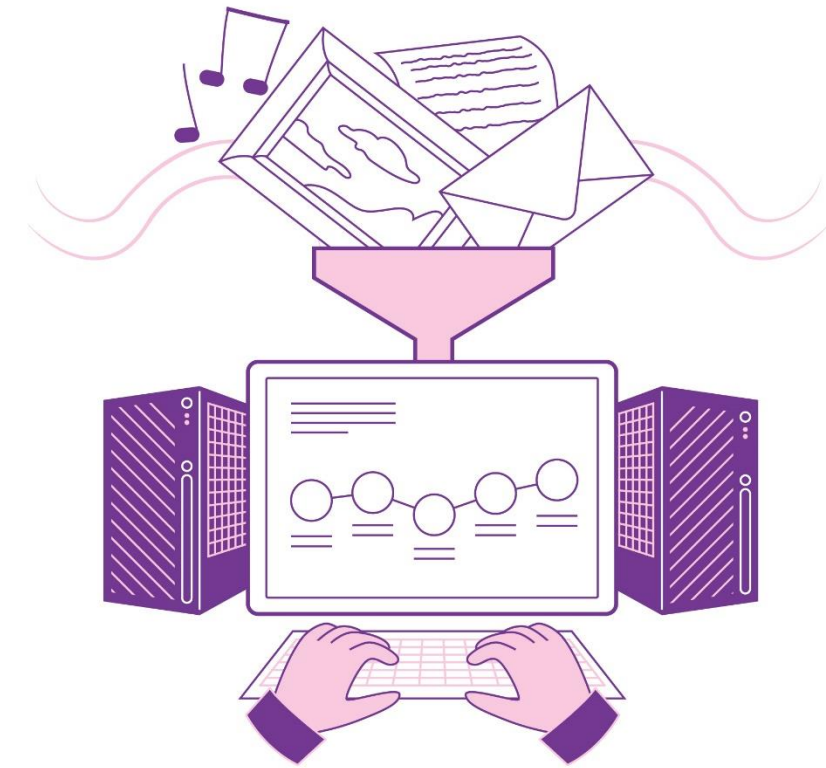
# RENEWING TOGETHER, SUSTAINABLY IN SOCIETY



**WE WILL OFFER AN EXCELLENT  
USER EXPERIENCE**



**WE WILL DEVELOP SMART WAYS  
TO FIND INFORMATION**

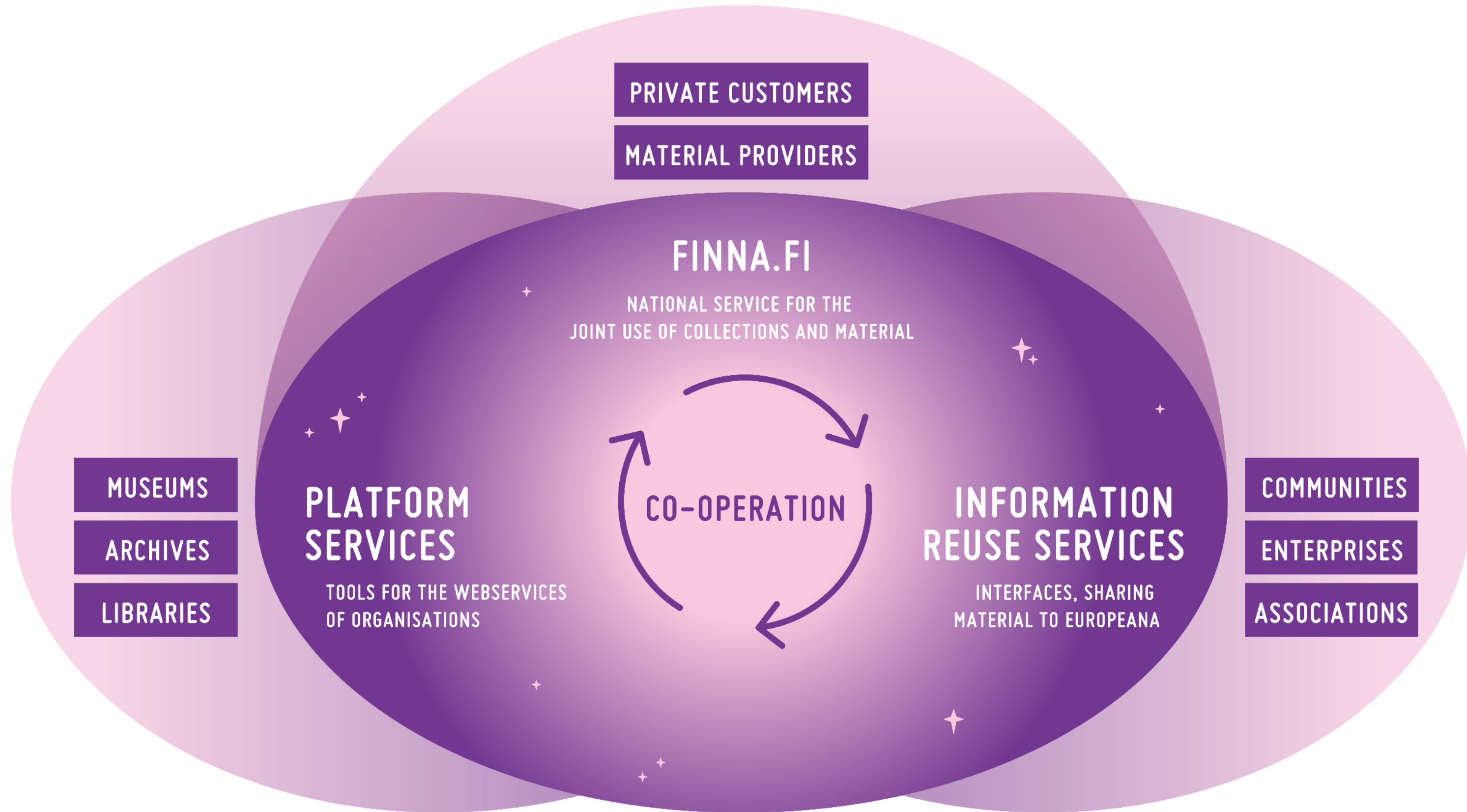


**WE WILL PROMOTE THE  
UTILISATION OF MATERIAL AS DATA**



**OUR CORE TASK IS TO OFFER CULTURAL, SCIENTIFIC AND EDUCATING CONTENT TO EVERYONE**

# Finna's services



# Finna's core task



OUR CORE TASK IS TO OFFER CULTURAL, SCIENTIFIC AND EDUCATING CONTENT TO EVERYONE

## CORE TASK

**Finna is a service for finding and using materials from archives, libraries and museums.** We offer materials from trusted operators, learning content and research data as openly as possible. We will invest in making Finna widely known. The main idea is that culture, science and the opportunity to learn belong to everyone!

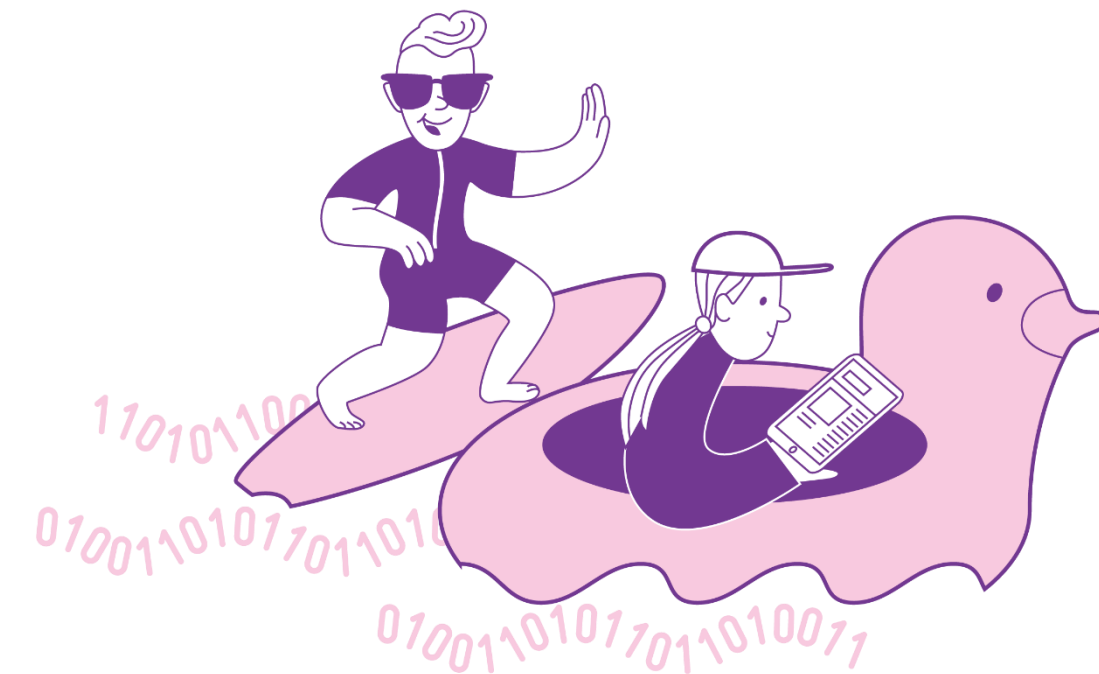
- ✓ **We will provide a safe and sustainable infrastructure for hundreds of organisations.**
- ✓ **We will prioritise ease of use and listen our to users when developing the service.**
- ✓ **We will collaborate to build the service and make it possible to use the materials across organisational boundaries.**

# Priorities

# We will offer an excellent user experience

A good user experience is the lifeline of digital services. The best services hide the complexity of the systems and work seamlessly for various user groups, including vulnerable groups.

The technological revolution is changing identity and access management in online services. This has a strong link with the security of services and the ability to respond to users' needs. Finna will create a good user experience responsibly and through collaboration.



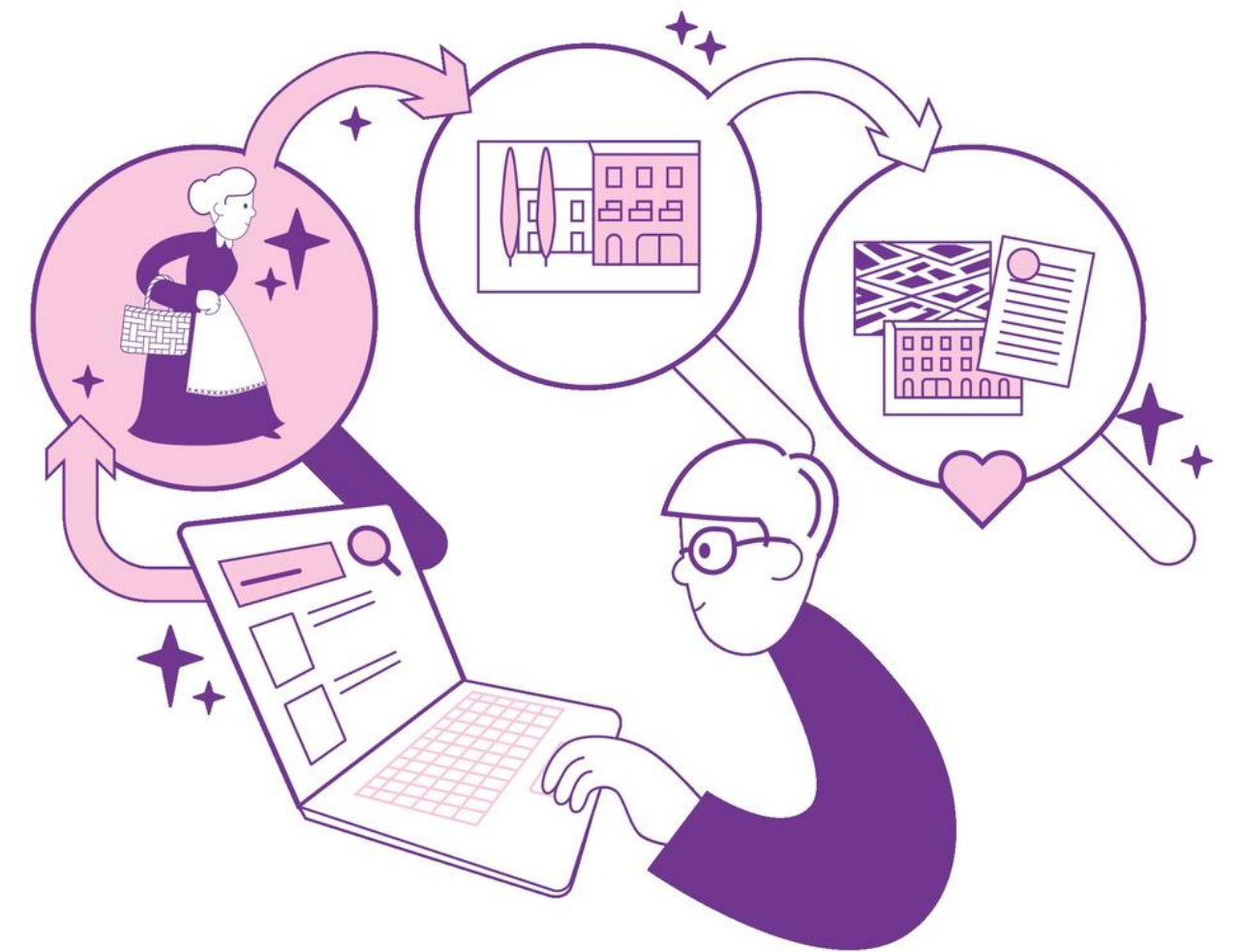
- ✓ **We will deliver a smooth user experience ethically, sustainably and by constantly developing our services.**
- ✓ **We will offer a secure service in which the user has the power to control their data.**
- ✓ **The best user experiences are created through collaboration.**

# We will develop smart ways to find information

At the heart of the search experience is finding what you are looking for as well as delightful surprises. Search services must keep up with the times to be competitive. The pace of technological development will create new expectations for search services.

As the volume of material continues to grow, smart recommendations will provide essential support for discovery.

- ✓ **At the heart of everything is an up-to-date search experience.**
- ✓ **We will identify users' interests.**
- ✓ **We will develop smart recommendations.**

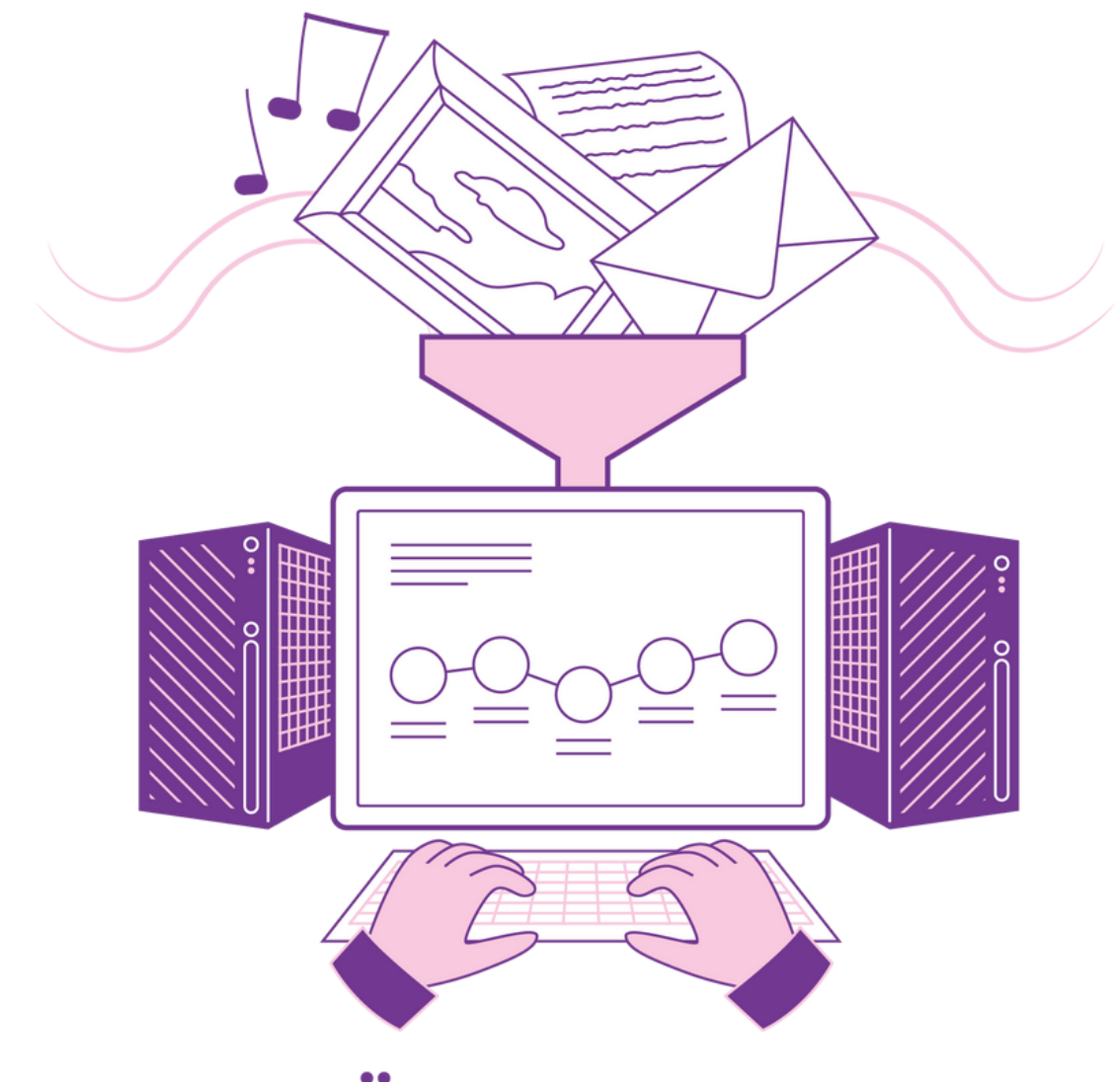




# We will promote the utilisation of material as data

The data-driven use of digital materials and their description data obtained through Finna will be developed. The importance of automated data processing is increasing. The quality of digital objects and description data is essential for usability. Access rights must always be respected when using data.

- ✓ **We will enable the reuse of digital objects and description data for a variety of purposes by developing Finna's interface services.**
- ✓ **In collaboration with Finna's partner organisations, we will promote the quality of digital objects and description data, and compliance with FAIR principles.**
- ✓ **We will support the needs of data-intensive research.**



# Thank you!

