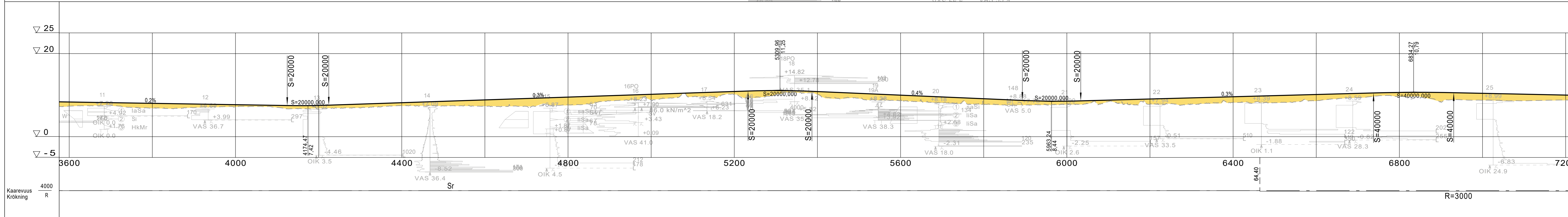
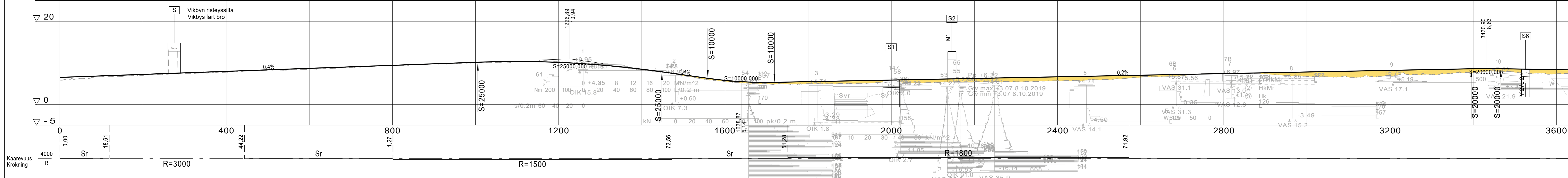
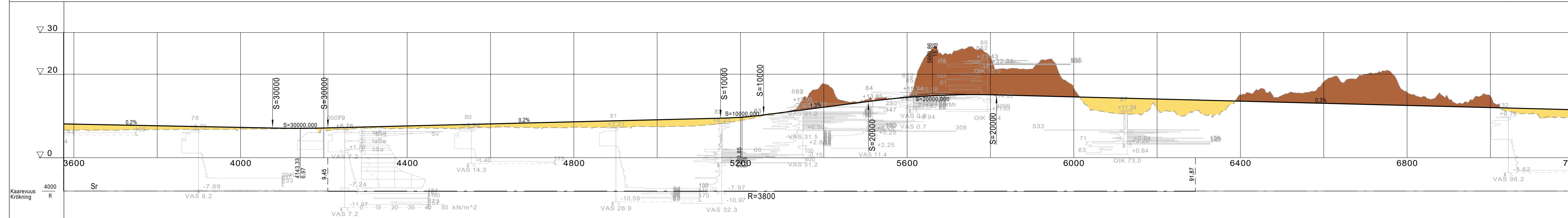
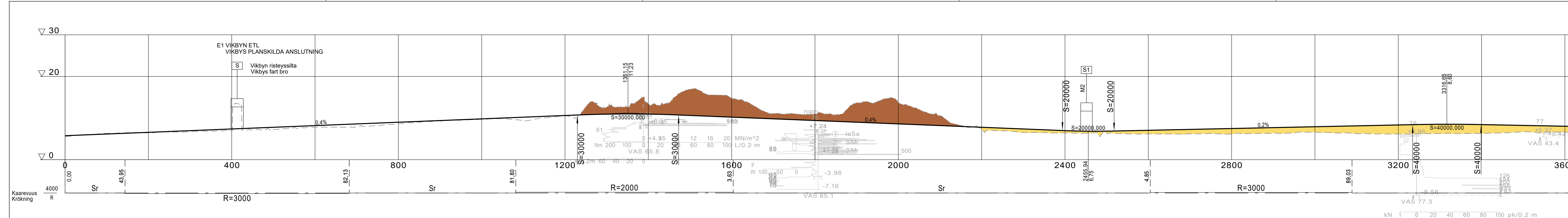
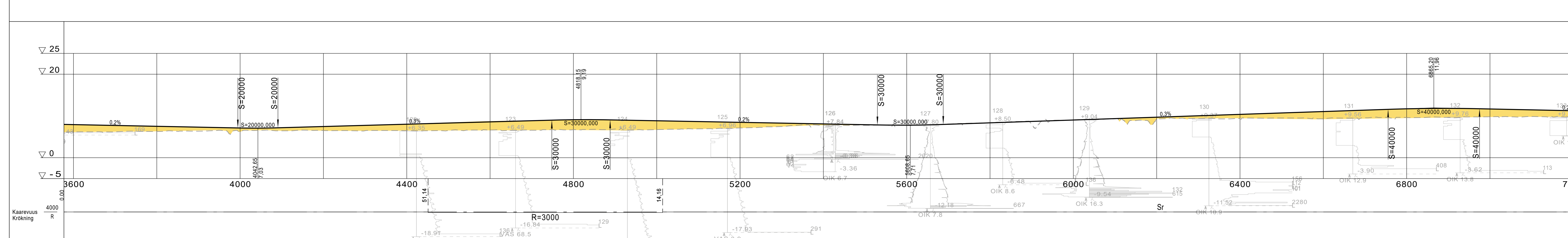
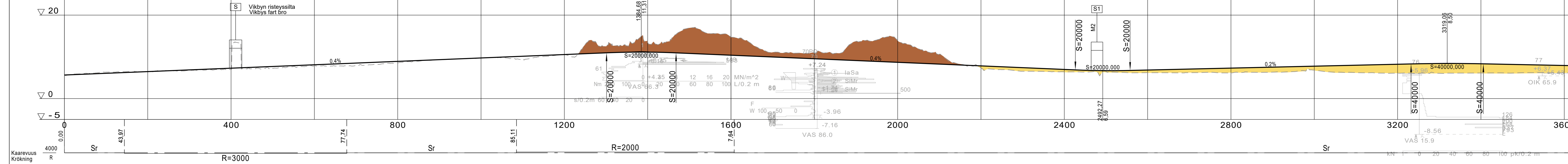


E1 VIKBYN ETL
VIKBYNS PLANSKILDA ANSLUTNING





E1 VIKBYN ETL
VIKBYNS PLANSKILDA ANSLUTNING



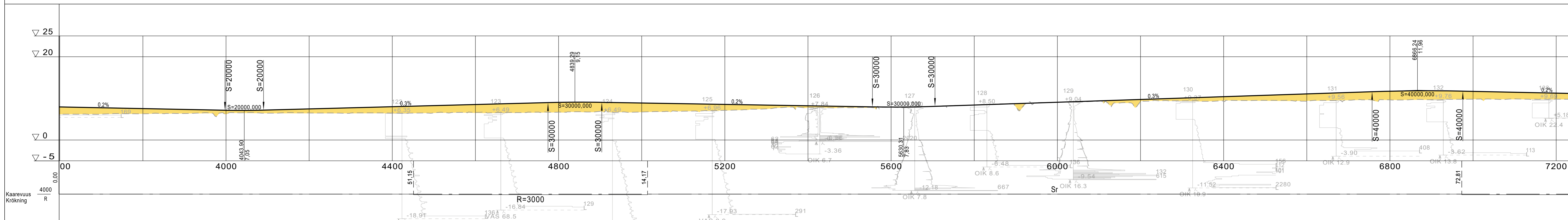
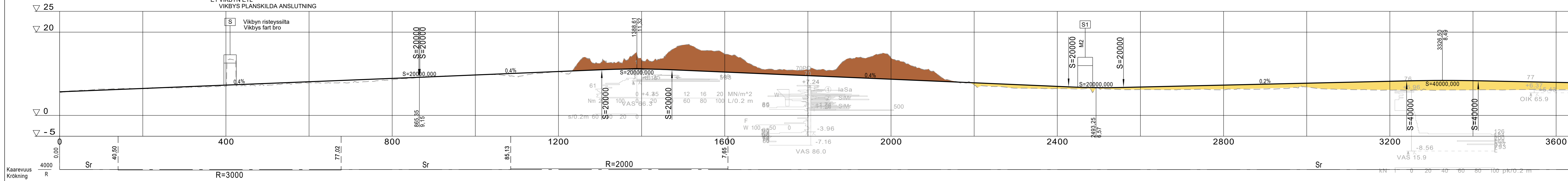
2020

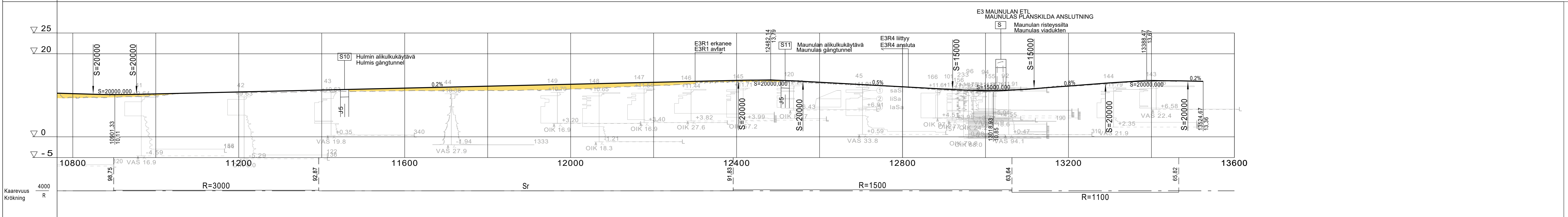
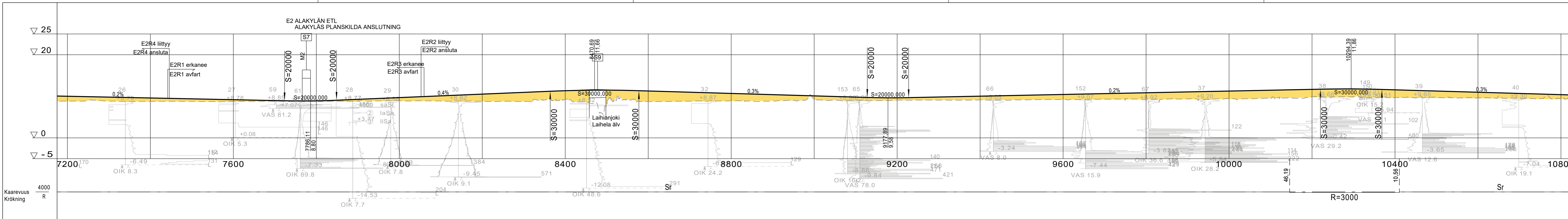
Valtatie 3 välillä Helsinki - Laihia,
alustava yleissuunnitelma (Mustasaari, Laihia)
Riksväg 3 på avsnittet Helsingby - Laihela,
preliminär utredningsplan (Korsholm, Laihela)

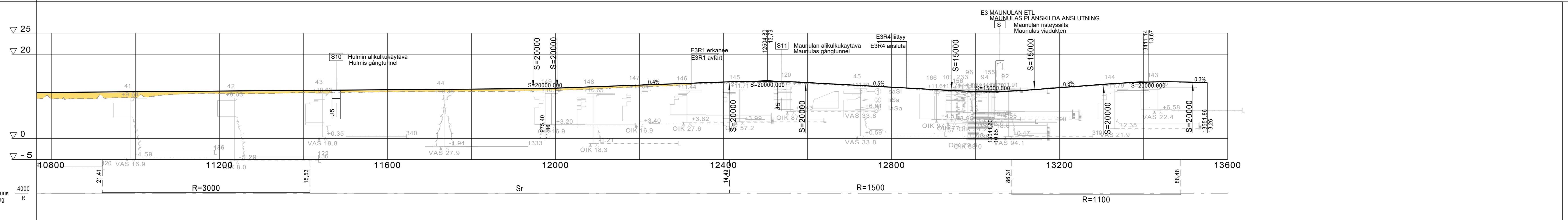
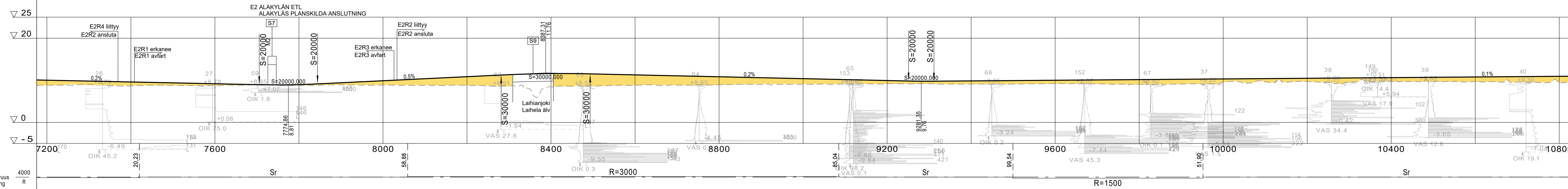
Pituusleikkaus Ve 2b plv 0-7200
Längdprofil Alt 2b sekt 0-7200
Mittakaava/Skala 1:4000/ 1:400
28.2.2020

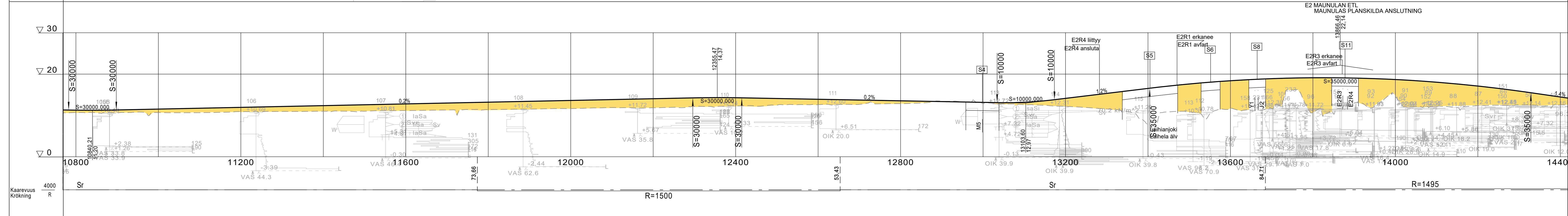
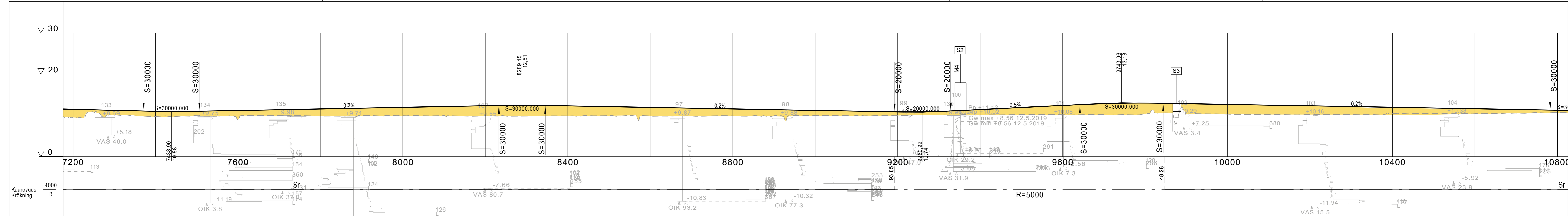
2b_5

E1 VIKBYN ETL
VIKBYNS PLANSKILDA ANSLUTNING









2020

Valtatie 3 välillä Helsingby - Laihia,
alustava yleissuunnitelma (Mustasaari, Laihia)
Riksväg 3 på avsnittet Helsingby - Laihela,
preliminär utredningsplan (Korsholm, Laihela)

Pituusleikkaus Ve 2a plv 7200-14400
Längdprofil Alt 2a sekt 7200-14400
Mittakaava/Skala 1:4000/ 1:400
28.2.2020

2a_6

