

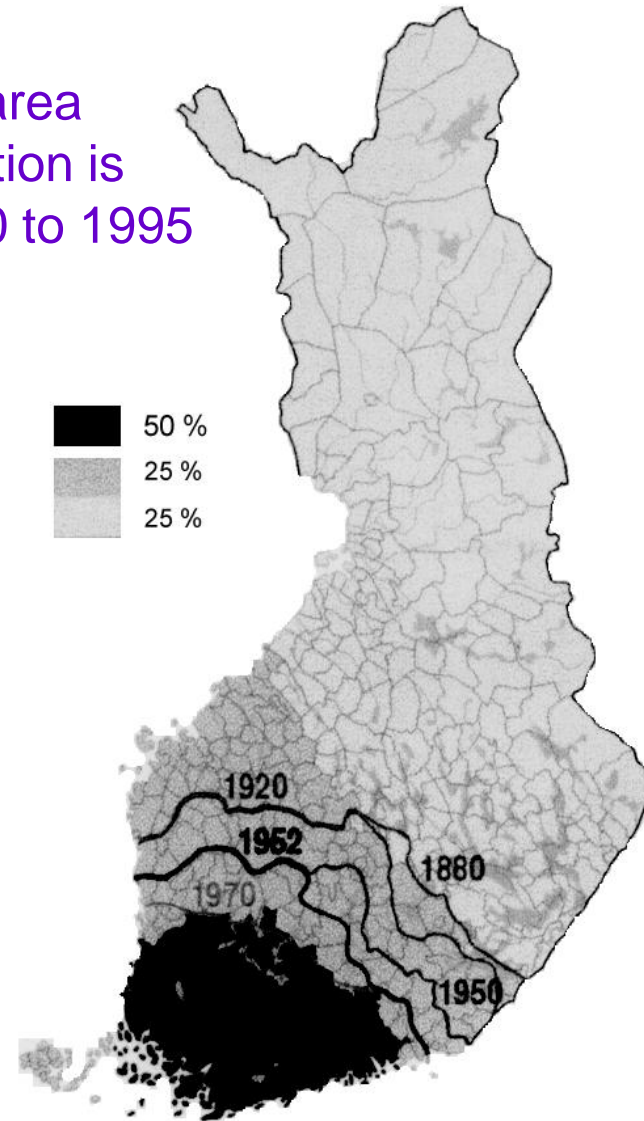


**MIGRATION INSTITUTE
OF FINLAND**

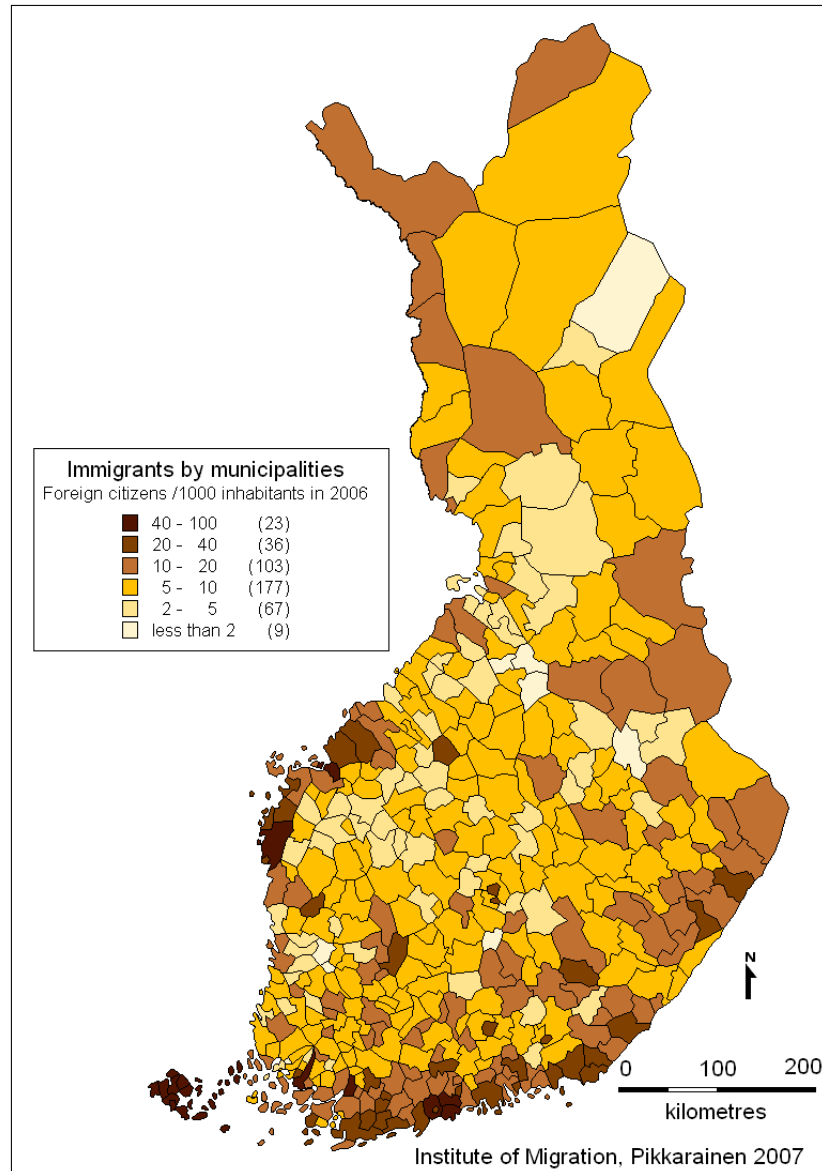
Migration and regional development in Finland –
challenges for the future

Elli Heikkilä

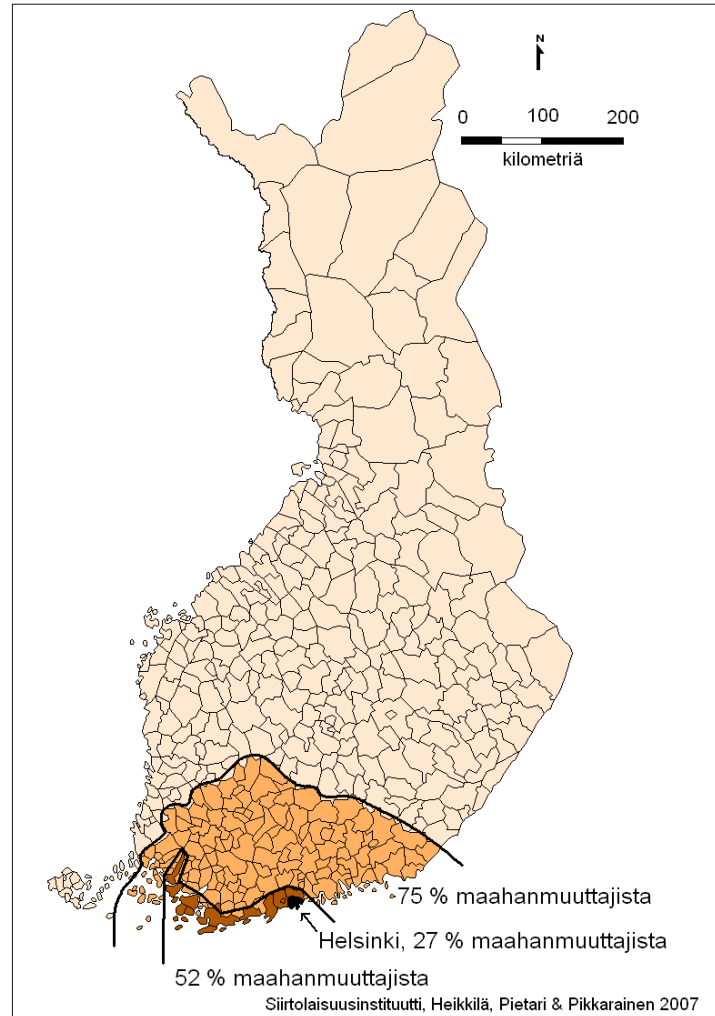
Development of the land area
where the 50 % of population is
living in Finland from 1880 to 1995



Immigrants in Finland's municipalities in 2006



Concentration of immigrants to the Southern Finland in 2005 (Data: Statistics Finland)

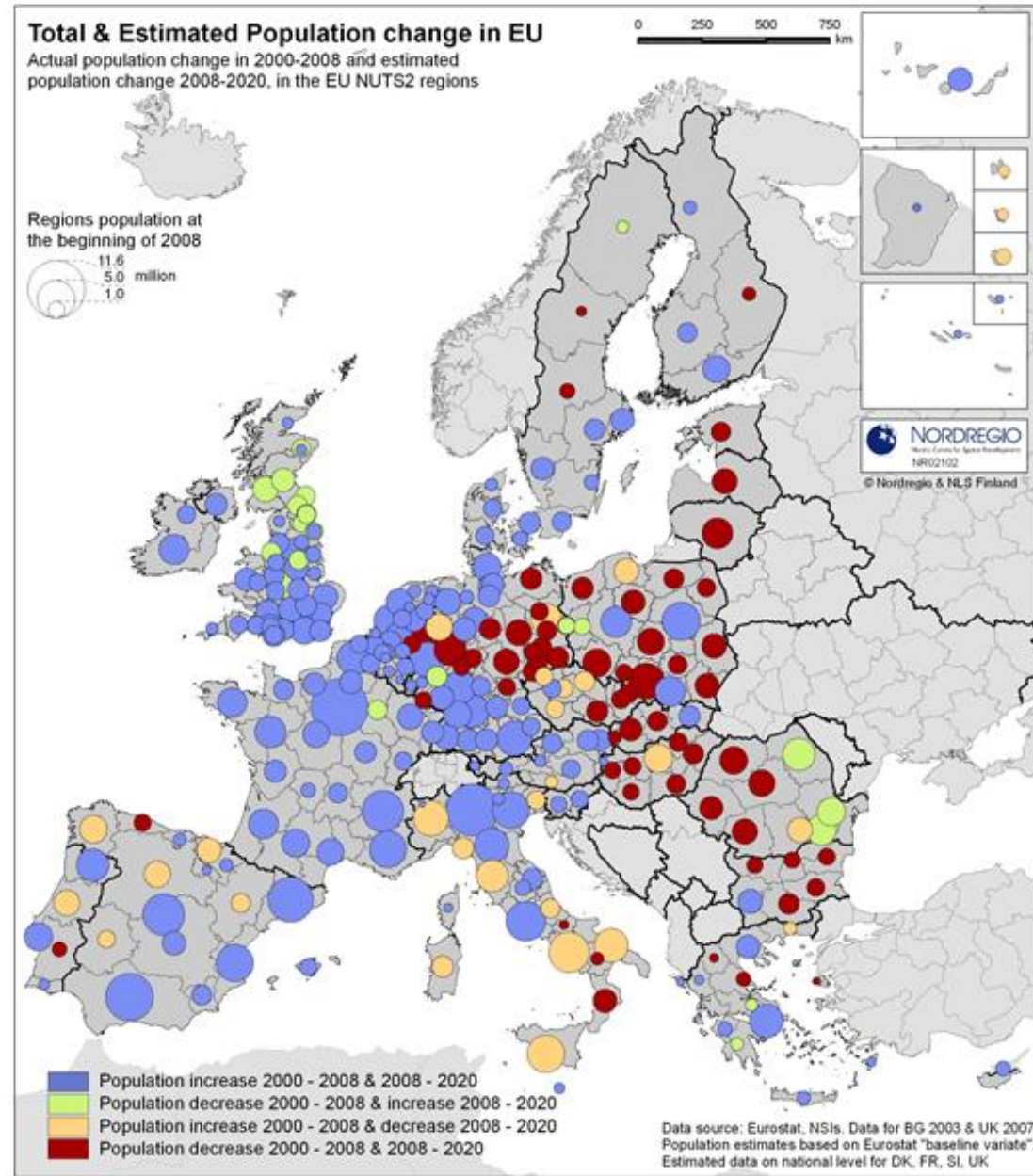


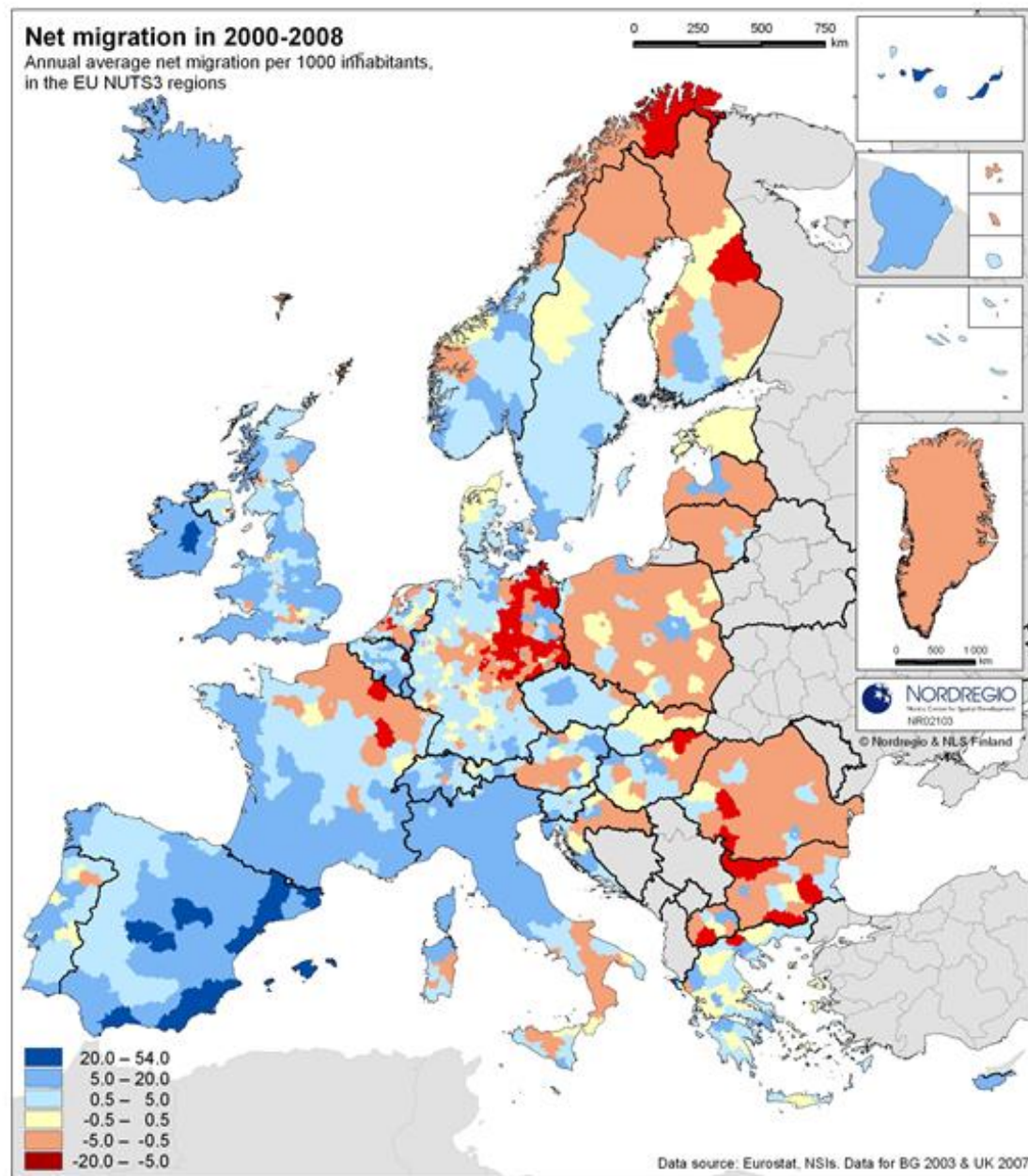
Migration flows in the country-internal migration (Karjalainen 1989; STV 1993; STV 2001; STV 2007).

Migration flows	1951	1960	1970	1980	1991	2000	2006
Rural-Urban	25	32	31	25	24	24	22
Urban-Rural	18	20	24	25	26	20	22
Rural-Rural	45	31	18	14	12	12	11
Urban-Urban	12	17	27	36	38	44	45
Total (%)	100	100	100	100	100	100	100
Total amount	138 000	221 000	268 000	198 000	183 000	260 000	287 000

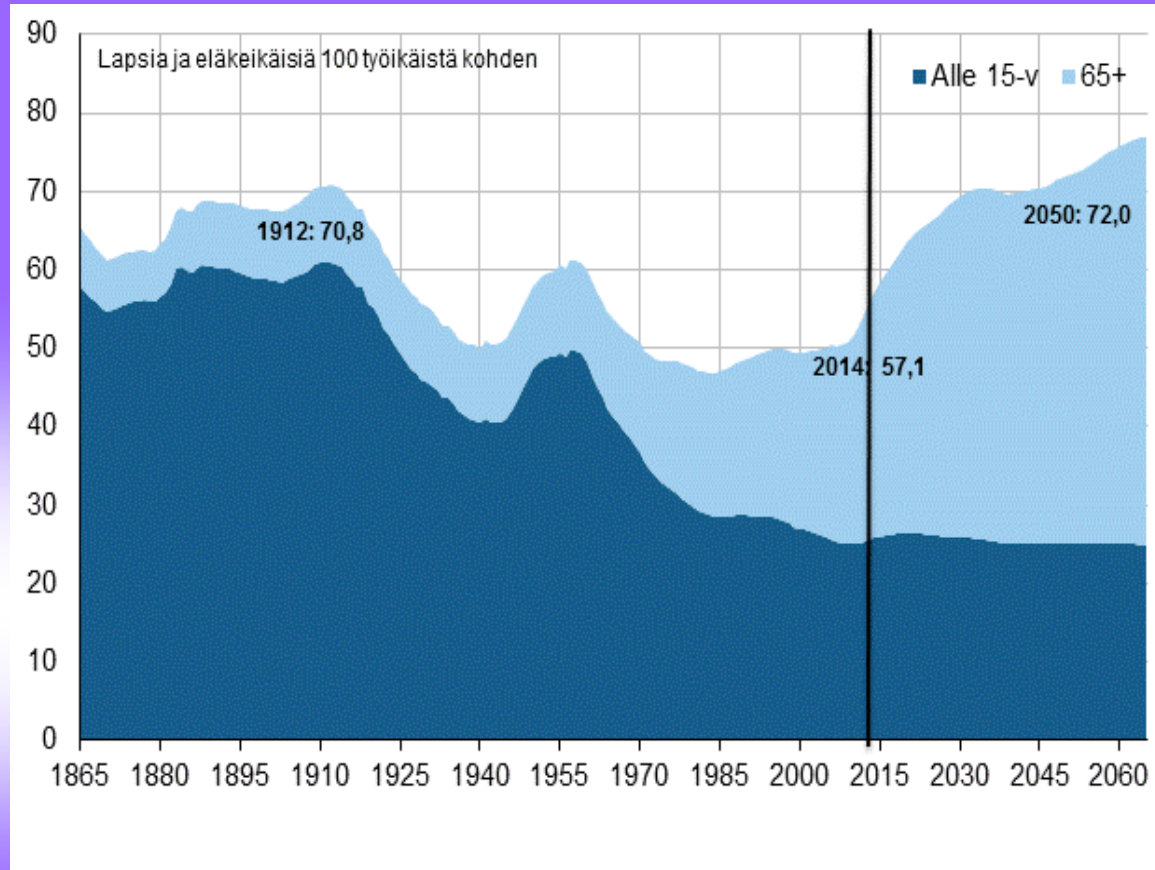
Migration flows by type of municipality in 2014

Type of municipality	In-migration between municipalities	%	Out-migration between municipalities	%	Municipality-internal migration	%	Immigration	%	Emigration	%
Urban municipalities	198 072	73,6	191 111	71,1	459 412	80,5	26 485	84,0	13 188	85,1
Densely settled municipalities	38 612	14,4	40 709	15,1	64 099	11,2	2 262	7,2	1 139	7,4
Rural municipalities	32 225	12,0	37 089	13,8	47 154	8,3	2 760	8,8	1 159	7,5
Whole country	268 909	100	268 909	100	570 665	100	31 507	100	15 486	100





Dependency ratio of population in Finland 1865–2065 (Statistics Finland)

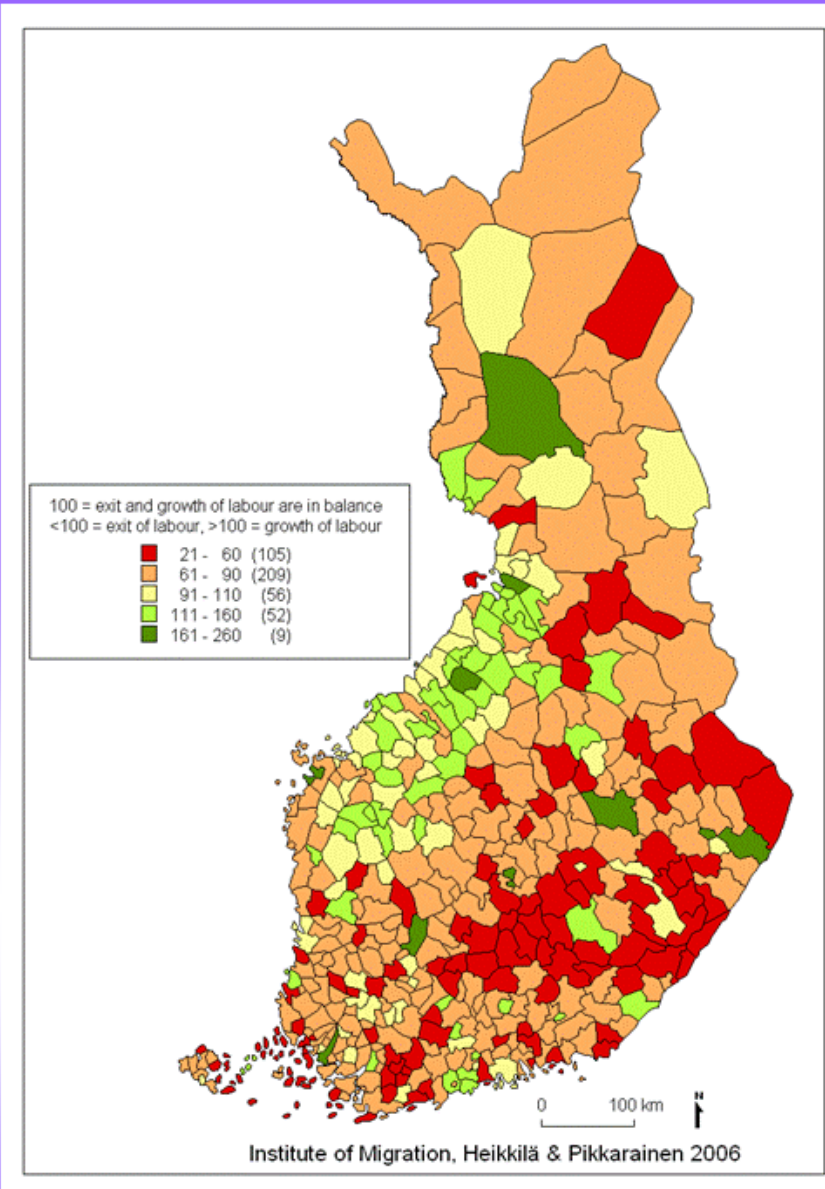


Population age structure by type of municipality in Finland in 2014 and 2040 (forecast) (data: Statistics Finland)

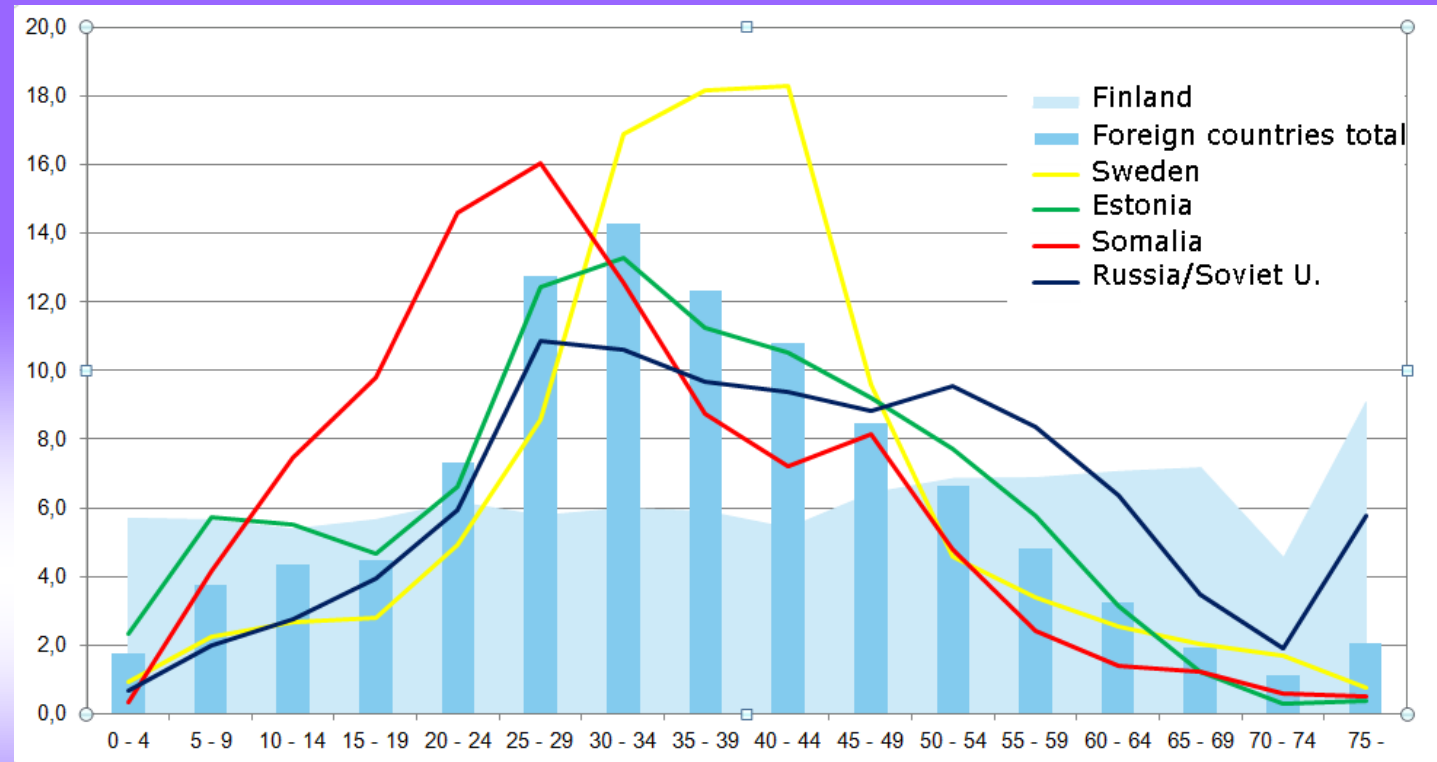
		0–14	15–34	35–64	65–74	75–84	85+	Total
Urban municipalities								
2014	abs.	610 921	1 021 574	1 460 609	400 004	216 440	82 484	3 788 627
	%	16,1	26,9	38,5	10,6	5,7	2,2	100,0
2040	abs.	619 193	1 030 465	1 581 842	424 479	386 212	228 190	4 270 381
	%	14,5	24,2	37,1	9,9	9	5,3	100,0
Densely settled municipalities								
2014	abs.	159 201	177 601	359 344	107 574	59 626	23 782	888 428
	%	17,9	20,1	40,5	12,1	6,7	2,7	100,0
2040	abs.	141 654	159 336	318 818	103 112	99 535	60 105	882 560
	%	16,1	18,1	36	11,7	11,3	6,8	100,0
Rural municipalities								
2014	abs.	126 486	144 445	320 184	107 909	65 795	27 774	794 698
	%	16,0	18,3	40,3	13,6	8,3	3,5	100,0
2040	abs.	105 103	118 841	244 280	89 654	93 669	57 003	708 550
	%	14,8	16,7	34,5	12,7	13,3	8,0	100,0
Finland total								
2014	abs.	896 608	1 343 620	2 140 137	615 487	341 861	134 040	5 471 753
	%	16,5	24,7	39	11,2	6,2	2,4	100,0
2040	abs.	865 950	1 308 642	2 144 940	617 245	579 416	345 298	5 861 491
	%	14,8	22,3	36,6	10,5	9,9	5,9	100,0

Population dependency ratio by municipality in 2014: 10 smallest and 10 biggest municipalities according to the dependency ratio

Region	Population dependency ratio	0-14 years old, %	15-64 years old, %	65+, %	Medium age of population	Foreign background persons, %
Helsinki	43,4	13,9	69,8	16,4	40,4	13,8
Tampere	46,5	13,7	68,3	18,0	40,6	6,7
Vantaa	48,4	18,1	67,4	14,5	38,8	14,7
Turku	48,6	12,9	67,3	19,8	41,7	10,0
Jyväskylä	48,7	16,2	67,3	16,5	39,3	4,4
Järvenpää	49,3	17,6	67,0	15,4	39,8	4,4
Espoo	49,5	19,6	66,9	13,6	37,8	13,4
Oulu	50,0	19,3	66,7	14,0	37,4	3,4
Joensuu	50,7	14,4	66,4	19,2	41,6	4,1
Kerava	50,8	16,8	66,3	16,8	40,4	8,3
Pielavesi	84,9	14,3	54,1	31,6	49,3	1,7
Hailuoto	85,0	12,4	54,1	33,5	50,3	1,0
Padasjoki	85,0	11,3	54,1	34,7	51,6	1,4
Rautavaara	85,1	11,3	54,0	34,7	52,2	0,7
Savitaipale	86,2	11,7	53,7	34,6	51,1	1,0
Vesanto	86,4	11,2	53,7	35,2	52,0	1,5
Sysmä	86,6	10,4	53,6	36,0	52,6	1,7
Kivijärvi	87,1	13,6	53,5	33,0	49,0	0,7
Kuhmoinen	99,2	9,5	50,2	40,3	54,7	1,4
Luhanka	100,8	10,9	49,8	39,3	54,2	0,4
FINLAND TOTAL	57,1	16,4	63,7	19,9	42,1	5,9



Age structure of different population groups living in Finland by country of birth in 2014



Statistics about immigrants and asylum seekers (Statistics Finland, the Finnish Immigration Service)

- **Immigrants born abroad 2014: 321 977**
 - **Most common countries of birth:**
 - Former USSR and Russia: 66 747**
 - Estonia: 42 652**
 - Sweden: 31 894**
 - Somalia: 10 054**
 - Iraq: 10 001**
 - China: 9 433**
 - Thailand: 9 240**
 - Former Yugoslavia: 6 941**
 - Germany: 6 473**
 - Turkey: 6 326**
- **The number of asylum seekers 3 651 persons in 2014**
- **In 2015 the number of asylum seekers 32 476; 63 % from Iraq; 16 % from Afghanistan; 6 % from Somalia; 3 % from Syria**

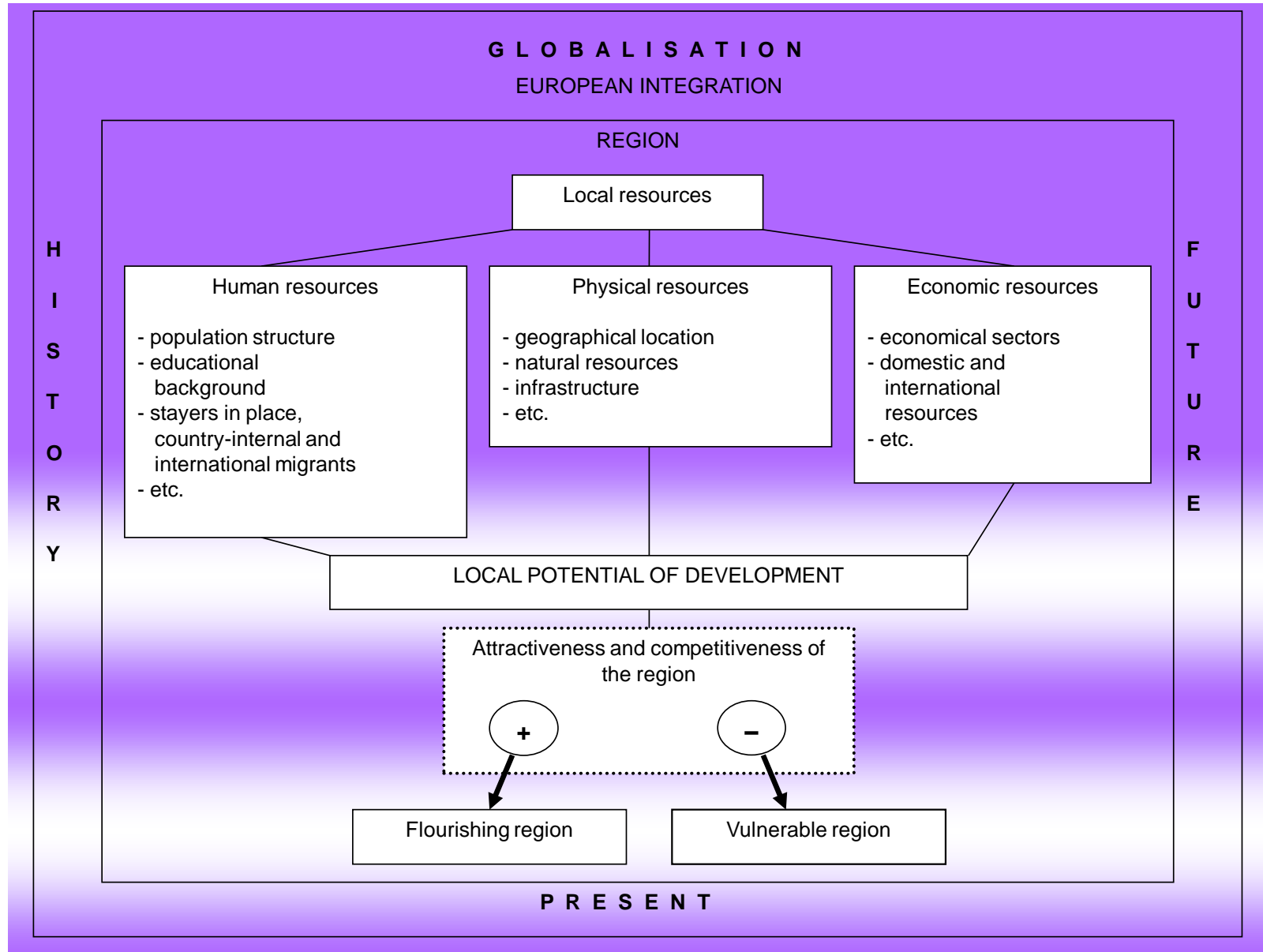
Statistical information of reception centres (the Finnish Immigration Service)

Vastaanottokeskukset ja niiden asukkaat



The most common countries of origin for immigrants moving to Finland in 2000, 2005 and 2014

2000			2005			2014		
Country of origin	Immigrants abs.	%	Country of origin	Immigrants abs.	%	Country of origin	Immigrants abs.	%
Sweden	3 232	19	Sweden	3 950	18	Estonia	5 071	16
Russia	2 592	15	Russia	2 145	10	Sweden	2 694	9
Norway	1 034	6	Estonia	2 063	10	Russia	2 467	8
Estonia	846	5	Germany	938	4	UK	1 100	3
Germany	685	4	UK	934	4	Spain	1 031	3
UK	638	4	USA	836	4	USA	903	3
USA	579	3	Norway	756	4	Germany	897	3
Denmark	407	2	China	735	3	China	884	3
Former Serbia and Montenegro	372	2	Spain	631	3	India	819	3
Spain	340	2	Thailand	563	3	Irak	758	2
Top-10 countries	10 725	63	Top-10 countries	13 551	63	Top-10 countries	16 624	53
Other countries	6 170	37	Other countries	7 804	37	Other countries	14 883	47
Total	16 895	100	Total	21 355	100	Total	31 507	100



Flourishing regions in Finland are especially the growth centres which locate in the southern Finland, except Oulu in the northern part of Finland. They spread the economic activities and positive impulses to the close-by labour market areas. These growth centres attract not only the natives but also immigrants.

Vulnerable regions in different parts of Finland in population and economic terms are thus not attractive destination areas for newcomers and it looks like the development trend is hard to turn into positive development phase which creates a vicious circle functioning in their regions.

Thank you!

Further information:
www.migrationinstitute.fi
Elli Heikkilä elli.heikkila@utu.fi