



*Women and Men in Finland 2011*



## Foreword

This publication contains statistical data on the position of women and men, and on gender equality in Finland.

The publication is useful at lectures, meetings or anywhere else where you might need to produce quick factual data as a basis of discussion. The tables and graphs of the publication are clear and simple and include explanations of the most important concepts used.

Statistics concerning gender equality are here mainly examined by the statistical topic division used by Statistics Finland, but data from other sources are also included. The tables and graphs are designed to give a realistic picture of the position of women and men in different fields of society.

February 2012

Jari Tarkoma  
Director  
Population Statistics

*Inquiries:*  
*+358 9 17 341*  
*tasa-arvo.tilasto@stat.fi*

*Cover: Irene Koumolou*  
*Cover photo: Hanna Varis*  
*Layout: Eeva-Liisa Repo*

*©2013 Statistics Finland*

*2nd revised edition*

*ISSN 1798-176X (pdf)*  
*ISBN 978-952-244-426-4 (pdf)*

# Contents

Progress so far . . . . .	4
1 Population and families . . . . .	6
2 Education . . . . .	21
3 Labour market . . . . .	34
4 Earnings . . . . .	53
5 Income . . . . .	58
6 Health and exercise . . . . .	67
7 Violence and crime . . . . .	88
8 Information Society . . . . .	95
9 Power and decision making . . . . .	96
10 Time use . . . . .	110

## Explanations of symbols

Magnitude nil . . . . .	—
Magnitude less than half of unit employed . . . . .	0
Data not available or too uncertain to be reported . . . . .	

In some tables the sums do not amount to the totals shown because of rounding.

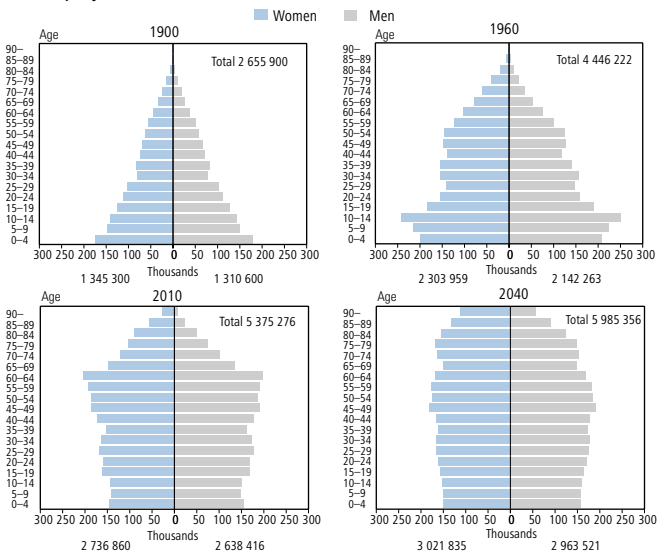
# Progress so far

- 1864 Unmarried women receive full rights (when 25 years old)
- 1878 Women and men receive equal rights with regard to inheritance
- 1890 The first public kindergarten is established in Helsinki
- 1901 Women receive the right to study at university on equal terms with men
- 1906 Women receive voting rights for national elections (the first country to do so in Europe) and the right to be electoral candidates (the first country to do so in the world)
- 1907 The first women join the first Parliament (19/200)
- 1908 Brothels in Helsinki (16) closed down
- 1917 Women receive general voting rights for local government elections
- 1919 Wives gain a right to work without their husband's permission
- 1926 The Act on Women's Eligibility in State Posts is passed  
The first female minister for the Finnish government is instated
- 1930 The Marriage Act releases wives from the guardianship of their husbands, and wives are given the right to their own property
- 1937 The Act on Maternity Allowance is passed
- 1943 Statutory school meals are introduced
- 1944 Acts passed instituting local government maternity and child health care clinics and also local government health visitors
- 1961 The contraceptive pill is approved
- 1962 The principle of equal pay for work of equal value is established both in the public and private sector
- 1970 The Abortion Act is passed  
Human relationships and sex education become part of the school curriculum
- 1972 First woman to be elected to be Minister of Finance
- 1975 First woman to be elected to be Minister of Justice
- 1978 The father receives the right to 12 days' paternity leave in connection with the birth of his child
- 1979 Finland's first sheltered homes were set up in Helsinki, Turku, Oulu and Kotka
- 1980 A law (taking effect as of 1 January 1982) is passed on the fathers' right to share parental leave with the mother even at a later stage  
The first Plan of Action for Promotion of Gender Equality of the Government of Finland

- 1986 Finland ratifies the UN Convention on the Elimination of All Forms of Discrimination Against Women  
Women are allowed to keep their family name even when married  
A child is entitled to have the mother's or father's family name
- 1987 The Act on Equality between Women and Men is passed
- 1988 The first female priests were consecrated in the Evangelical Lutheran Church of Finland
- 1990 Children up to the age of three are guaranteed a municipal child care  
The first woman in the world to become Minister of Defence
- 1992 A woman becomes a University Principal  
A Woman becomes Director General of the Bank of Finland
- 1994 A woman becomes the Speaker of the Parliament
- 1995 The Act on Equality between Women and Men is partly reviewed  
The Act on women's voluntary military service is passed  
A woman becomes the Secretary General of the Ministry of Justice and the Ministry of Education
- 1996 A woman becomes Minister of Foreign Affairs  
A woman becomes Mayor of Helsinki  
Children under school age are guaranteed municipal day care  
Finnish Government's Plan of Action for the Promotion of Gender Equality is adopted
- 2000 A woman becomes Chancellor of a University (University of Turku)  
A woman is elected President of Finland.  
A Woman becomes member of the Board of the Bank of Finland  
First female officer graduated from the cadet school
- 2003 A woman becomes Prime Minister
- 2005 The Act on Equality between Women and Men is partly reviewed
- 2006 A woman becomes President of the Supreme Court
- 2007 For the first time the majority (60 per cent) of Government Ministers are women
- 2009 A woman becomes Secretary General of the Office of the President of the Republic of Finland
- 2010 A woman becomes bishop of the Evangelical Lutheran Church of Finland
- 2011 A woman becomes Minister of Finance

# 1 Population and families

## 1.1 Population by age 1900, 1960, 2010 (end of year) and 2040 (projection)



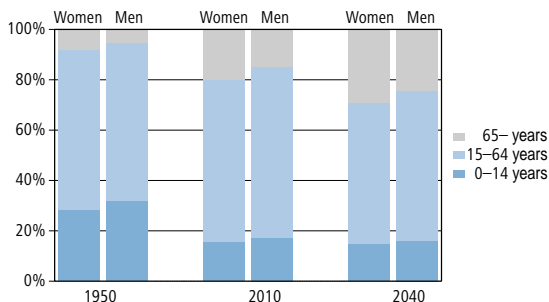
### In 2010

- An age of 100 years or more had been reached by 529 women and 93 men.
- The mean age of females was 42.8 years and of males 40.0 years.

Source: *Demographic Statistics, Statistics Finland*

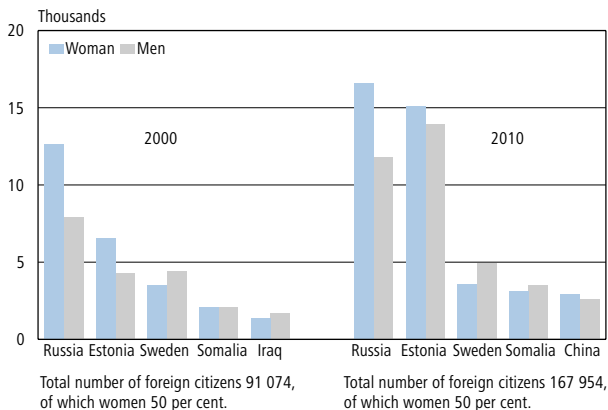


## 1.2 Population by age group 1950, 2010 (end of year) and 2040 (projection)



Source: Demographic Statistics, Statistics Finland

## 1.3 The five biggest groups of foreign citizens living in Finland 2000 and 2010



Source: Demographic Statistics, Statistics Finland

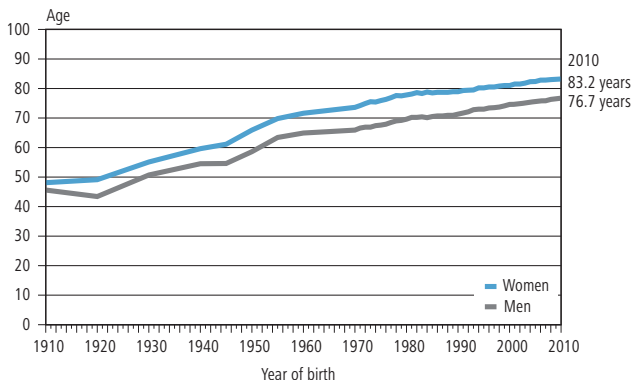
# 1 Population and families

## 1.4 Foreign citizens in Finland, 20 biggest groups at the end of 2010

	Total	Women	%	Men	%
Russia	28 426	16 625	58	11 801	42
Estonia	29 080	15 129	52	13 951	48
Sweden	8 510	3 573	42	4 937	58
Somalia	6 593	3 108	47	3 485	53
China	5 559	2 928	53	2 631	47
Iraq	5 024	1 785	36	3 239	64
Thailand	5 021	4 356	87	665	13
Turkey	3 973	1 171	29	2 802	71
Germany	3 715	1 494	40	2 221	60
India	3 468	1 286	37	2 182	63
Great Britain	3 454	676	20	2 778	80
Former Serbia and Montenegro	2 903	1 300	45	1 603	55
Vietnam	2 783	1 482	53	1 301	47
Iran	2 584	1 100	43	1 484	57
Afghanistan	2 522	1 107	44	1 415	56
United States	2 483	907	37	1 576	63
Poland	2 241	1 015	45	1 226	55
Ukraine	2 103	1 087	52	1 016	48
Bosnia and Herzegovina	1 779	825	46	954	54
Other countries total	45 733	18 387	40	27 346	60
<b>Foreign citizens total</b>	<b>167 954</b>	<b>79 341</b>	<b>47</b>	<b>88 613</b>	<b>53</b>

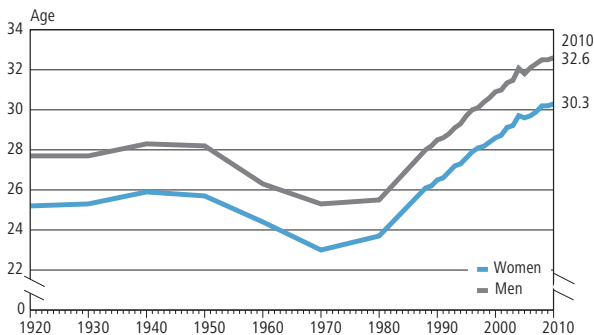
Source: Demographic Statistics, Statistics Finland

## 1.5 Average life expectancy at birth 1910–2010



Source: Demographic Statistics, Statistics Finland

## 1.6 Average age of getting married for the first time 1920–2010\*



29 952 marriages were contracted in 2010.

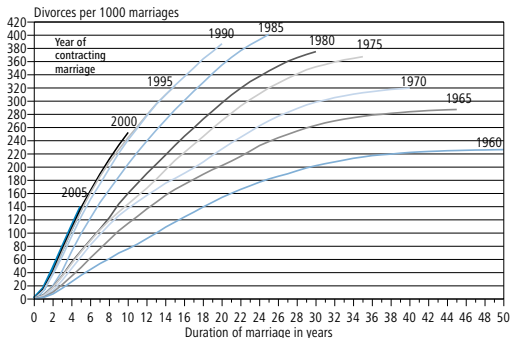
According to family statistics the proportion of domestic partnerships of all families was 22 per cent.

Source: Demographic Statistics, Statistics Finland

\* Legend revised on 27 February 2013.

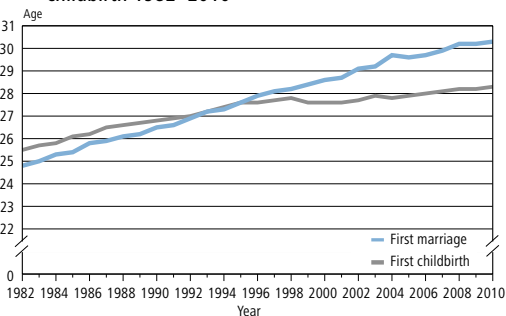
# 1 Population and families

## 1.7 Cumulation of divorces by the end of year 2010 by year of contracting marriage



Source: Demographic Statistics, Statistics Finland

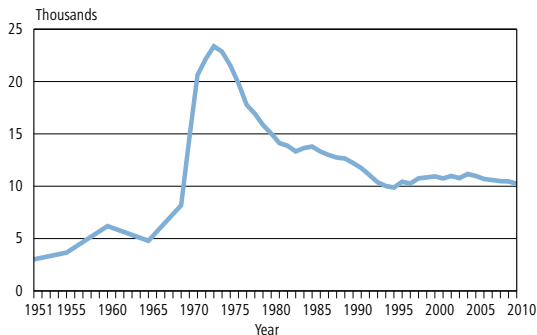
## 1.8 Average age of women at first marriage and first childbirth 1982–2010



- 60 980 children were born in 2010, of whom 25 066 (41.1 per cent) outside marriage.
- The increase in domestic partnerships started to show after 1985.
- First childbirth often takes place before contracting marriage.
- 54.2 per cent of the first-born were born outside marriage in 2010.
- Children of lone mothers made up 7.7 per cent and those of lone fathers 0.1 per cent of all children under one year in 2010.
- In 2010, lone parent families numbered 117 782. Of these, 86.6 per cent were families with lone mothers and 13.4 per cent with lone fathers.

Source: Demographic Statistics, Statistics Finland

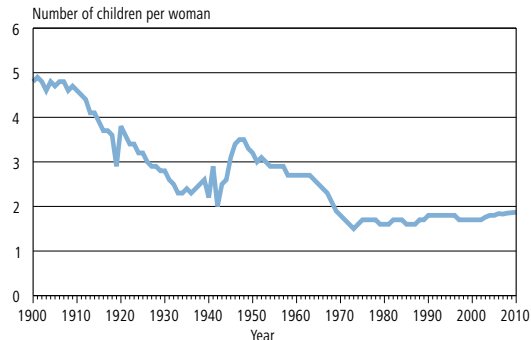
## 1.9 Number of abortions performed 1951–2010



The contraceptive pill was approved in 1961.  
Abortion law in 1970.

Source: *The National Institute for Health and Welfare*

## 1.10 Total fertility rate 1900–2010



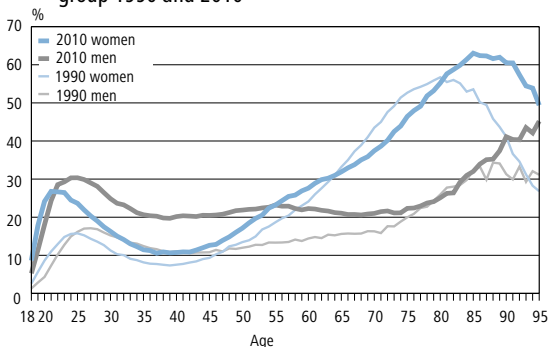
In 2010

- 80.9 per cent of women aged 40–49 have given birth
- Mothers aged 40–49 have given birth to an average of 2,4 children
- Women aged 40–49 have given birth to an average of 1,9 children

Source: *Demographic Statistics, Statistics Finland*

# 1 Population and families

## 1.11 Women and men living alone as a proportion of age group 1990 and 2010



Source: Demographic Statistics, Statistics Finland

## 1.12 Families by type 1950–2010

Year	Number Total	%					Total %	Proportion of family population %	Average size of family (persons)
		Married couple	Cohabi- ting couple	Mother with children	Father with children	Regis- tered couple			
1950	930 572	82.8	0.0	14.8	2.4	—	100	85.8	3.72
1960	1 036 270	85.6	0.0	14.8	1.9	—	100	86.7	3.72
1970	1 153 878	85.2	2.3	14.8	1.6	—	100	86.7	3.45
1980	1 278 102	79.3	8.0	11.0	1.7	—	100	84.0	3.15
1990	1 365 341	73.6	13.8	10.8	1.8	—	100	82.1	3.00
2001	1 407 759	67.4	19.3	11.3	2.1	—	100	77.9	2.87
2002	1 411 947	67.1	19.7	11.1	2.1	0.0	100	77.6	2.86
2003	1 415 104	66.8	20.0	11.0	2.1	0.0	100	77.4	2.85
2004	1 420 781	66.9	20.4	10.9	2.1	0.0	100	77.1	2.84
2005	1 426 002	66.6	20.6	10.7	2.1	0.0	100	76.8	2.83
2006	1 431 376	66.4	20.9	10.6	2.0	0.0	100	76.6	2.82
2007	1 437 709	66.3	21.2	10.5	2.0	0.0	100	76.3	2.81
2008	1 444 386	66.3	21.3	10.4	2.0	0.0	100	76.1	2.81
2009	1 450 488	66.1	21.4	10.3	2.1	0.1	100	75.9	2.80
2010	1 455 073	66.0	21.5	10.3	2.1	0.1	100	75.6	2.79

Source: Demographic Statistics, Statistics Finland

## 1.13 Families with underage children by type 1970–2010

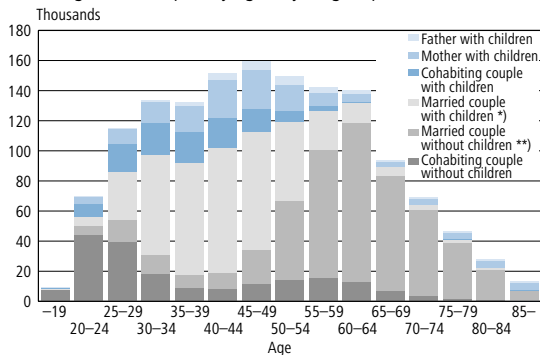
Year	Number		%				Total
	Total	Married couple with children	Cohabiting couple with children	Mother with children	Father with children	Registered couple with children	
1970	677 035	88.9	0.9	9.0	1.2	–	100
1980	688 732	83.1	4.7	10.9	1.4	–	100
1985	659 052	81.0	6.3	11.3	1.5	–	100
1990	640 637	76.6	9.4	12.3	1.7	–	100
1992	647 571	74.0	10.8	13.4	1.9	–	100
1993	647 123	72.8	11.3	13.9	1.9	–	100
1994	643 799	71.4	11.7	14.8	2.0	–	100
1995	639 610	70.2	12.3	15.4	2.1	–	100
1996	635 034	69.1	12.9	15.8	2.2	–	100
1997	630 472	68.0	13.7	16.1	2.2	–	100
1998	625 392	67.0	14.3	16.4	2.3	–	100
1999	619 641	65.9	15.0	16.8	2.4	–	100
2000	612 627	65.1	15.5	17.0	2.4	–	100
2001	605 322	64.3	16.1	17.2	2.4	–	100
2002	598 917	63.7	16.6	17.2	2.4	0.0	100
2003	595 027	63.0	17.1	17.4	2.5	0.0	100
2004	592 809	62.6	17.4	17.4	2.5	0.0	100
2005	591 528	62.3	17.7	17.4	2.5	0.0	100
2006	589 448	62.0	18.1	17.4	2.6	0.0	100
2007	587 767	61.7	18.3	17.4	2.6	0.0	100
2008	585 224	61.7	18.3	17.4	2.6	0.0	100
2009	584 172	61.4	18.4	17.5	2.7	0.0	100
2010	582 360	61.3	18.4	17.5	2.7	0,0	100

A family with underage refers to a family which has at least one child aged under 18 living at home.

Source: *Demographic Statistics, Statistics Finland*

# 1 Population and families

## 1.14 Families by type and age of mother 2010 (Families with father and children by age of father, registered couples by age of younger spouse.)

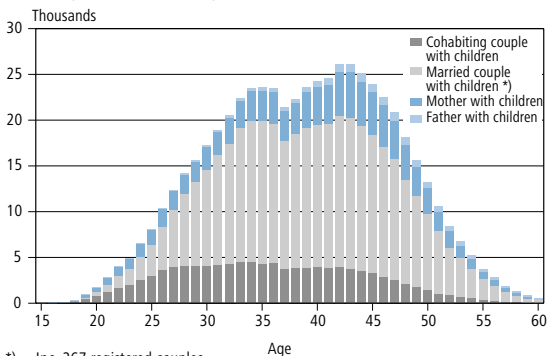


\*) Inc. 281 registered couples

\*\*\*) Inc. 1 320 registered couples

Source: Demographic Statistics, Statistics Finland

## 1.15 Families with underage children by type of family and age of mother/single-supporter father 2010

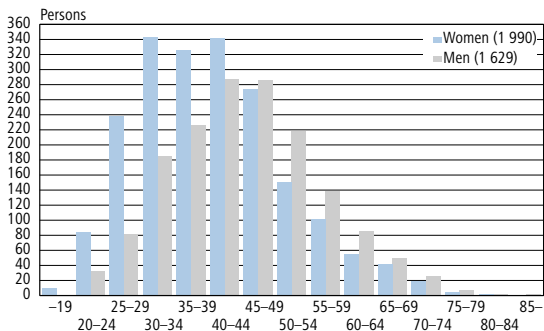


\*) Inc. 267 registered couples

Source: Demographic Statistics, Statistics Finland

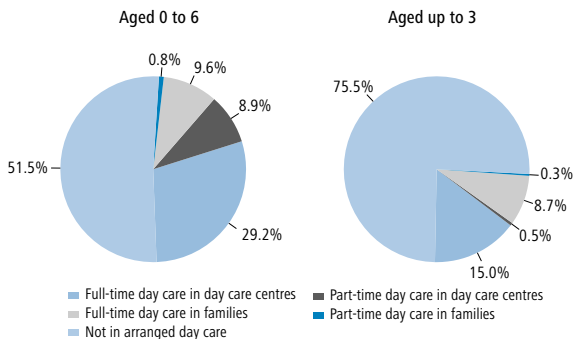


## 1.16 Women and men living in registered partnerships by age 2010 (end of year)



Source: Demographic Statistics, Statistics Finland

## 1.17 Children's day care 2010 Proportion (%) of all within age group



Source: Statistics on municipal finances and activities, Statistics Finland

# 1 Population and families

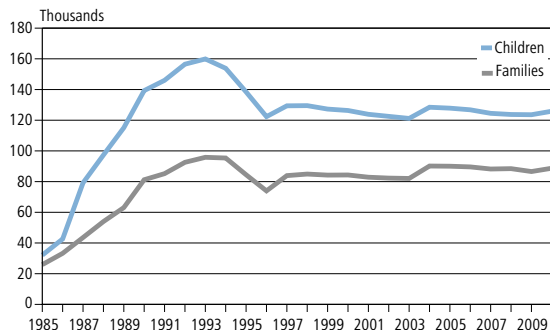
## 1.18 Children in organised day care 2010

Number		Aged up to 3	Aged 3 to 6	Aged 0 to 6
Full-time day care	Day care centres	27 383	95 176	122 559
	Day care in families	15 930	24 232	40 142
Part-time day care	Day care centres	892	36 227	37 119
	Day care in families	575	2 822	3 397
<b>% of age group</b>				
Full-time day care	Day care centres	15.0	40.2	29.2
	Day care in families	8.7	10.2	9.6
Part-time day care	Day care centres	0.5	15.3	8.9
	Day care in families	0.3	1.2	0.8

There were 247 children aged 7 and over in full-time day care in day care homes, while 89 children were in full-time day care in families, and there were 810 children in part-time care in day care homes, while 384 children were in part time day care in families.

Source: *Statistics on municipal finances and activities, Statistics Finland*

## 1.19 Recipients of child day care subsidies 1985–2010 (number in December)



Source: *The Social Insurance Institution*

# 1 Population and families

## 1.20 Child day care subsidies 1985–2010 (at 2010 values)

Year	Million							
	Basic amount	Additional amount	Sibling increase	Care allowance	Supplement	Reduced allowance	Municipal supplement	Total
1985	51,8	3,0	2,5					57,4
1986	114.2	7.4	4.0				1.4	127.0
1987	160.3	32.8	28.1				5.8	227.0
1988	188.0	45.2	31.9				6.5	271.6
1989	220.3	55.1	35.6			1.8	35.9	348.6
1990	293.4	71.7	40.3			2.0	119.8	527.1
1991	336.8	93.8	45.3			2.3	122.3	600.5
1992	429.8	144.2	56.6			2.5	76.6	709.7
1993	440.4	163.6	58.8			1.9	33.8	698.5
1994	449.4	172.0	61.3			1.7	16.0	700.4
1995	416.3	158.0	59.0			1.6	12.2	647.1
1996	270.6	98.0	40.2			1.3	20.0	430.1
1997	149.6	52.1	22.3	117.9	52.2	1.2	33.5	428.9
1998				295.1	134.7	1.1	50.8	481.6
1999				285.5	127.6	1.1	50.4	464.6
2000				275.8	118.1	1.2	50.3	445.3
2001				265.8	106.6	1.4	52.5	426.3
2002				260.1	98.1	1.6	56.0	415.8
2003				254.4	90.7	1.8	57.1	404.1
2004				250.3	83.6	5.2	59.3	398.3
2005				286.7	77.2	9.7	62.7	436.4
2006				282.8	71.0	9.4	63.4	426.5
2007				278.6	63.0	9.2	64.8	415.5
2008				268.1	53.7	8.9	68.0	398.7
2009				288.1	50.9	8.5	84.5	432.0
2010				292.0	49.1	11.5	91.5	444.1

Source: The Social Insurance Institution

## 1 Population and families

### 1.21 Child custody, right of access and residence 2005–2010

	2005	2006	2007
<b>Agreements on child custody during year</b>			
Agreements on joint custody	31 435	31 794	31 768
Agreements on joint custody for registered partners	–	–	–
Agreements on custody entrusted to the mother alone	2 365	2 161	2 269
Agreements on custody entrusted to the father alone	302	275	322
<b>Total</b>	<b>34 102</b>	<b>34 230</b>	<b>34 359</b>
<b>Agreements on right of access during year</b>			
<b>Total</b>	<b>17 040</b>	<b>16 893</b>	<b>17 710</b>
<b>Agreements on residence of child during year</b>			
With mother	15 125	14 215	14 661
With father	3 405	3 020	3 282
<b>Total</b>	<b>18 530</b>	<b>17 235</b>	<b>17 943</b>
	2008	2009	2010
<b>Agreements on child custody during year</b>			
Agreements on joint custody	32 798	32 808	32 863
Agreements on joint custody for registered partners	–	–	24
Agreements on custody entrusted to the mother alone	2 164	2 115	2 092
Agreements on custody entrusted to the father alone	279	300	287
<b>Total</b>	<b>35 241</b>	<b>35 224</b>	<b>35 269</b>
<b>Agreements on right of access during year</b>			
<b>Total</b>	<b>18 352</b>	<b>19 409</b>	<b>19 920</b>
<b>Agreements on residence of child during year</b>			
With mother	14 670	14 902	15 297
With father	3 065	3 138	3 257
<b>Total</b>	<b>17 735</b>	<b>18 040</b>	<b>18 554</b>

Source: National Institute for Health and Welfare

## 1.22 Parenthood allowances by age 2010

	Parenthood allowance		Total number of days covered		Average allowance
	€1,000	%	Number	%	€ per day
<b>Mothers</b>					
-19	4 098	0.5	1 75 645	1.1	23.3
20-24	68 824	7.9	1 986 996	12.8	34.6
25-29	231 921	26.8	4 589 720	29.6	50.5
30-34	329 310	38.0	5 257 118	33.9	62.6
35-39	179 294	20.7	2 678 586	17.3	66.9
40-	52 962	6.1	803 595	5.2	65.9
<b>Total</b>	<b>866 409</b>	<b>100.0</b>	<b>15 491 660</b>	<b>100.0</b>	<b>55.9</b>
<b>Fathers</b>					
-19	44	0.0	1 635	0.1	26.9
20-24	2 479	2.7	52 152	4.4	47.5
25-29	15 750	17.3	242 136	20.6	65.0
30-34	34 047	37.4	427 957	36.4	79.6
35-39	24 378	26.8	282 817	24.1	86.2
40-	14 375	15.8	169 240	14.4	84.9
<b>Total</b>	<b>91 073</b>	<b>100,0</b>	<b>1 175 937</b>	<b>100,0</b>	<b>77,4</b>

Source: Statistics on benefits for families with children, Social Insurance Institution of Finland

## 1 Population and families

### 1.23 Percentage of women in immigration by type of citizenship 1995–2010

Year	Percentage of women (%)		
	Total	Foreign citizens	Finnish citizens
1995	50.8	51.4	49.9
2000	50.3	50.8	49.6
2005	49.3	48.0	51.1
2006	48.3	46.9	50.6
2007	47.2	45.6	50.4
2008	45.5	43.9	48.9
2009	47.8	46.6	50.2
2010	47.5	45.9	51.3

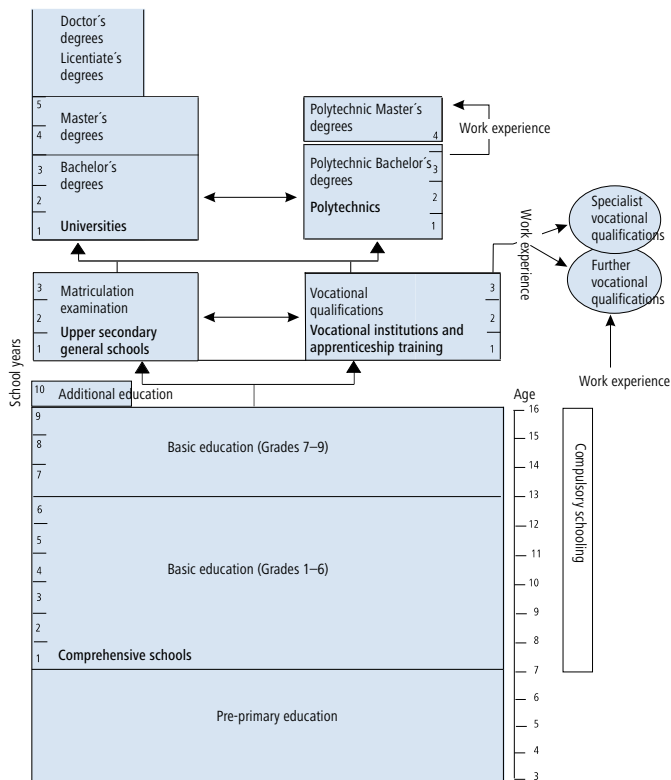
Source: *Demographic Statistics, Statistics Finland*

### 1.24 Percentage of women in emigration by type of citizenship 1995–2010

Year	Percentage of women (%)		
	Total	Foreign citizens	Finnish citizens
1995	50.4	41.8	52.1
2000	50.7	44.2	53.4
2005	51.2	42.2	53.6
2006	50.1	41.8	52.6
2007	50.1	41.5	52.9
2008	48.8	40.7	52.8
2009	48.5	37.8	53.8
2010	50.8	42.1	53.9

Source: *Demographic Statistics, Statistics Finland*

## 2.1 The regular education system in Finland



## 2 Education

### 2.2 Population aged 15 or over by level of education <sup>1)</sup> at end-2009

Level of education <sup>2)</sup>	Population aged 15 or over		Woman aged 15 or over		Men aged 15 or over	
		%		%		%
Only basic education	1 508 061	33.8	765 048	33.4	743 013	34.2
Population with educational qualifications	2 955 043	66.2	1 526 809	66.6	1 428 234	65.8
Upper secondary education (ISCED 3/4)	1 736 173	38.9	836 331	36.5	899 842	41.4
Tertiary education (ISCED 5/6)	1 218 870	27.3	690 478	30.1	528 392	24.3
First stage of tertiary (ISCED 5)						
Vocational college (ISCED 5B)	477 211	10.7	291 481	12.7	185 730	8.6
Lower and higher university, polytechnic (ISCED 5A)	706 775	15.8	385 053	16.8	321 722	14.8
Second stage of tertiary (ISCED 6)	34 884	0.8	13 944	0.6	20 940	1.0
<b>Total</b>	<b>4 463 104</b>	<b>100</b>	<b>2 291 857</b>	<b>100</b>	<b>2 171 247</b>	<b>100</b>

1) Unesco: International Standard Classification of Education 1997 (ISCED)

2) The principal contents of the levels:

Upper secondary education (ISCED 3/4): upper secondary general education,

upper secondary vocational education, specialist vocational qualifications

First stage of tertiary education, 5B programmes (ISCED 5B): vocational college education

First stage of tertiary education, 5A programmes (ISCED 5A): polytechnic degrees,

lower and higher university degrees

Second stage of tertiary education (ISCED 6): licentiate's and doctor's degrees

Source: *Education Statistics, Statistics Finland*



### 2.3 Differences in the levels of educational qualifications (25–64 years) in EU21 countries 2009 <sup>1)</sup>

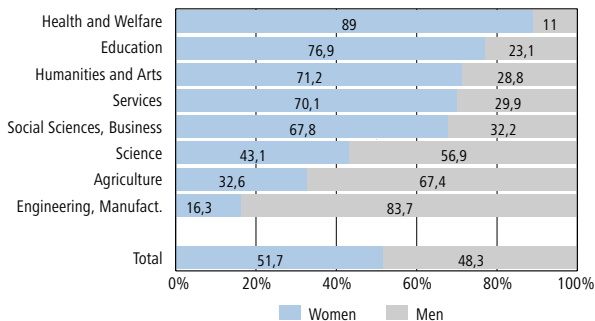
	At least upper secondary level (ISCED 3) Proportion of the female population	Proportion of the male population	Difference of the % proportions
Educational level of women higher or as high as educational level of men			
Ireland	75	68	7
Estonia	91	86	5
Portugal	32	27	5
Finland	84	80	4
Sweden	87	84	3
Greece	63	60	3
Spain	53	51	2
Belgium	71	70	1
Italy	55	54	1
Poland	88	88	0
Educational level of men higher			
France	69	71	2
Denmark	75	78	3
The Netherlands	72	75	3
Slovak Republic	89	93	4
Slovenia	81	85	4
Germany	83	88	5
Czech Republic	88	94	6
Luxembourg	74	80	6
Hungary	77	84	7
UK	70	77	7
Austria	76	87	11

1) Including EU countries which are member countries of OECD. Excluding ISCED 3C short programmes

Source: *Education at a Glance, OECD Indicators, 2011*

## 2 Education

### 2.4 Population with educational qualifications from vocational institutions, polytechnics and universities by field of education 2009



Source: Education Statistics, Statistics Finland

## 2.5 Population with at least upper secondary level qualification (ISCED 3) by age 2009

Age	At least upper secondary level qualification			Proportion (%) of the age group	
	Total	Women	Men	Women	Men
15–19	44 584	22 541	22 043	13,7	12,9
20–24	261 640	131 713	129 927	83,1	78,3
25–29	288 752	146 767	141 985	87,6	80,2
30–34	292 611	147 835	144 776	89,9	83,4
35–39	264 050	134 813	129 237	88,8	81,3
40–44	304 831	156 674	148 157	88,7	81,3
45–49	321 369	165 586	155 783	88,4	81,5
50–54	301 096	156 197	144 899	82,8	76,5
55–59	279 908	144 780	135 128	74	70,2
60–64	246 468	126 966	119 502	62,8	61,3
65–69	138 019	71 912	66 107	53	53,9
70–74	93 241	49 998	43 243	40,4	42,7
75–79	57 725	32 317	25 408	30,6	34,2
80–84	35 956	21 729	14 227	24,3	28,9
85–	24 793	16 981	7 812	21,1	27,8
<b>Total</b>	<b>2 955 043</b>	<b>1 526 809</b>	<b>1 428 234</b>	<b>66,6</b>	<b>65,8</b>

82.3 per cent of the women and 76.9 per cent of the men aged between 20 and 64 had completed post-basic level of education in 2009.

Source: *Education Statistics, Statistics Finland*

## 2 Education

### 2.6 Population with polytechnic and higher university degrees (ISCED 5A and 6) by age 2009

Age	Polytechnic and higher university degrees			Proportion (%) of the age group	
	Total	Women	Men	Women	Men
15–19	3	3	0	0.0	0.0
20–24	16 310	13 135	3 175	8.3	1.9
25–29	106 475	66 724	39 751	39.8	22.5
30–34	125 787	73 718	52 069	44.8	30.0
35–39	89 740	50 029	39 711	32.9	25.0
40–44	79 864	43 101	36 763	24.4	20.2
45–49	71 376	37 236	34 140	19.9	17.9
50–54	63 821	31 670	32 151	16.8	17.0
55–59	56 093	26 016	30 077	13.3	15.6
60–64	52 171	22 358	29 813	11.1	15.3
65–69	32 261	13 646	18 615	10.1	15.2
70–74	20 493	8 625	11 868	7.0	11.7
75–79	13 402	5 811	7 591	5.5	10.2
80–84	8 390	3 945	4 445	4.4	9.0
85–	5 473	2 980	2 493	3.7	8.9
<b>Total</b>	<b>741 659</b>	<b>398 997</b>	<b>342 662</b>	<b>17.4</b>	<b>15.8</b>

Source: Education Statistics, Statistics Finland

## 2.7 Population with second stage of tertiary educational qualification (ISCED 6) 1975–2009

	Degrees of licentiate and doctor				
	Total	Number		%	
		Women	Men	Women	Men
1975	5 978	926	5 052	15	85
1980	8 012	1 387	6 625	17	83
1985	10 018	1 993	8 025	20	80
1990	12 990	2 962	10 028	23	77
1995	17 542	4 777	12 765	27	73
2000	23 248	7 487	15 761	32	68
2001	24 480	8 124	16 356	33	67
2002	25 652	8 738	16 914	34	66
2003	26 869	9 387	17 482	35	65
2004	28 141	10 063	18 078	36	64
2005	29 429	10 781	18 648	37	63
2006	30 722	11 474	19 248	37	63
2007	32 115	12 274	19 841	38	62
2008	33 520	13 148	20 372	39	61
2009	34 884	13 944	20 940	40	60

There were 307 licentiate (of which 54.4 per cent women) and 1 642 doctorate (of which 52.4 per cent women) level degrees attained at universities in 2009.

Source: *Education Statistics, Statistics Finland*

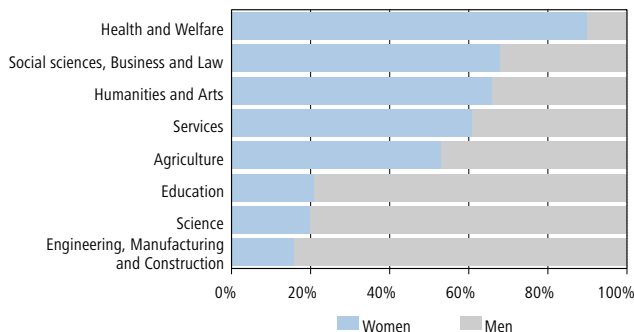
## 2 Education

### 2.8 Vocational institutions 2010

Field of education (ISCED)	Students			Degrees		
	Total	Women	Men	Total	Women	Men
Education	147	22	78	78	21	79
Humanities and Arts	15 789	64	36	3 482	66	34
Social sciences, Business and Law	50 430	64	36	12 044	68	32
Science	7 291	19	81	1 648	20	80
Engineering, Manufacturing and Construction	89 820	17	83	21 278	16	84
Agriculture	14 970	54	46	3 186	53	47
Health and Welfare	43 987	88	12	10 697	90	10
Services	57 429	60	40	14 643	61	39
<b>Total</b>	<b>279 863</b>	<b>50</b>	<b>50</b>	<b>67 056</b>	<b>51</b>	<b>49</b>

Source: Education Statistics, Statistics Finland

### 2.9 Degrees at vocational institutions by field of education (ISCED) 2010



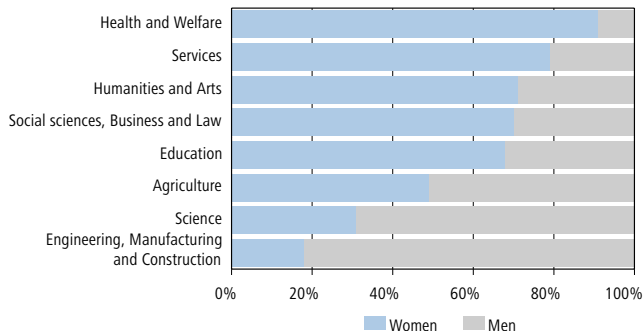
Source: Education Statistics, Statistics Finland

## 2.10 Polytechnics 2010

Field of education (ISCED)	Students			Degrees		
	Total	Women	Men	Total	Women	Men
Education	1 675	66	34	270	68	32
Humanities and Arts	10 551	69	31	1 690	71	29
Social sciences, Business and Law	27 913	61	39	4 319	70	30
Science	5 944	24	76	903	31	69
Engineering, Manufacturing and Construction	40 101	15	85	5 255	18	82
Agriculture	4 043	46	54	568	49	51
Health and Welfare	35 285	88	12	6 824	91	9
Services	13 340	69	31	2 070	79	21
<b>Total</b>	<b>138 852</b>	<b>54</b>	<b>46</b>	<b>21 899</b>	<b>63</b>	<b>37</b>

Source: Education Statistics, Statistics Finland

## 2.11 Degrees at polytechnics by field of education (ISCED) 2010



Source: Education Statistics, Statistics Finland

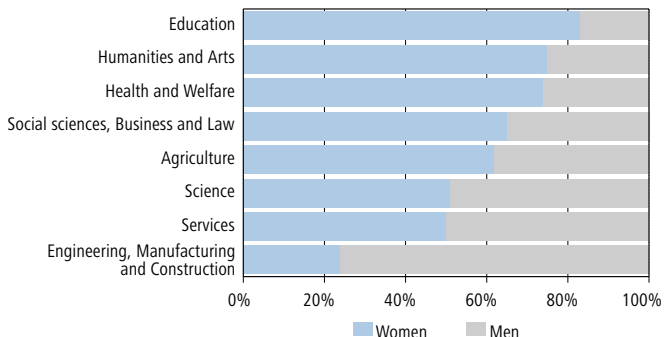
## 2 Education

### 2.12 Universities 2010

Field of education (ISCED)	Students			Degrees		
	Total	Women	Men	Total	Women	Men
Education	13 803	81	19	2829	83	17
Humanities and Arts	33 051	71	29	5127	75	25
Social sciences, Business and Law	43 065	58	42	7418	65	35
Science	25 314	41	59	3086	51	49
Engineering, Manufacturing and Construction	33 668	23	77	6968	24	76
Agriculture	2 771	58	42	549	62	38
Health and Welfare	14 623	70	30	2559	74	26
Services	3 109	48	52	582	50	50
<b>Total</b>	<b>169 404</b>	<b>54</b>	<b>46</b>	<b>29118</b>	<b>58</b>	<b>42</b>

Source: Education Statistics, Statistics Finland

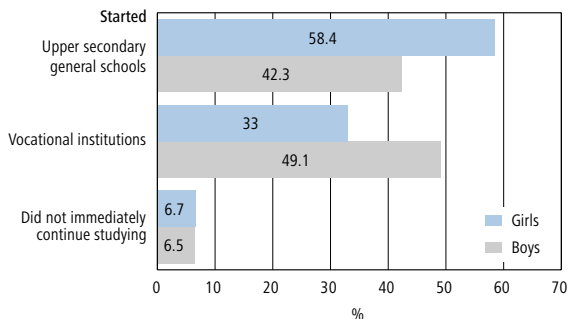
### 2.13 University degrees by field of education (ISCED) 2010



Source: Education Statistics, Statistics Finland



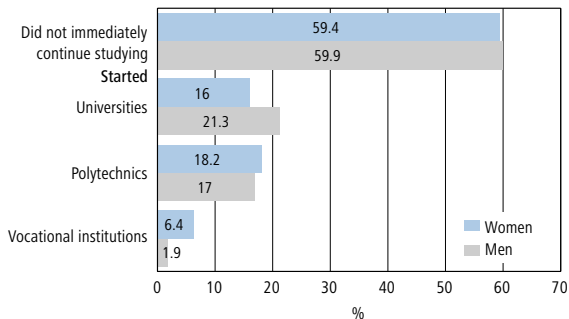
### 2.14 Pupils who have completed the comprehensive school in 2009 entering that year



Pupils completing the comprehensive school: girls 31 612, boys 32 525

Source: Education Statistics, Statistics Finland

### 2.15 Pupils who passed the matriculation examination in 2009

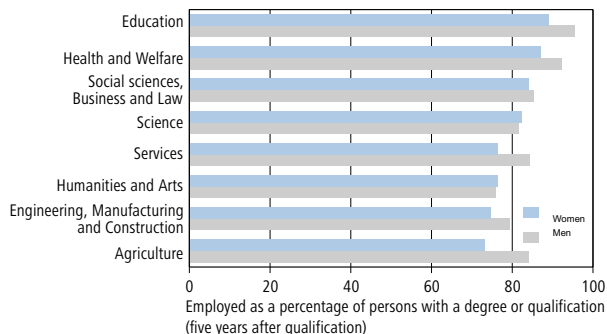


Pupils matriculating in 2009: women 19 063, men 13 948.

Source: Education Statistics, Statistics Finland

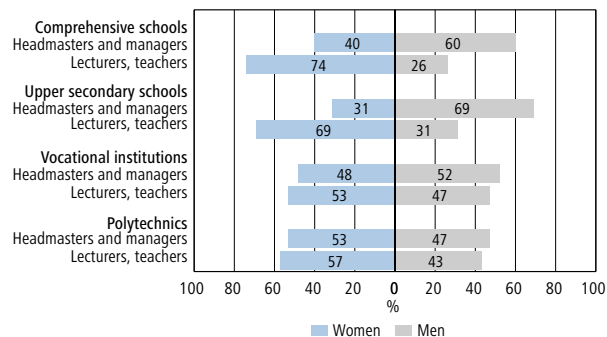
## 2 Education

### 2.16 Employment rates of persons with a degree or qualification attained in 2004 by field of education (ISCED) at end-2009



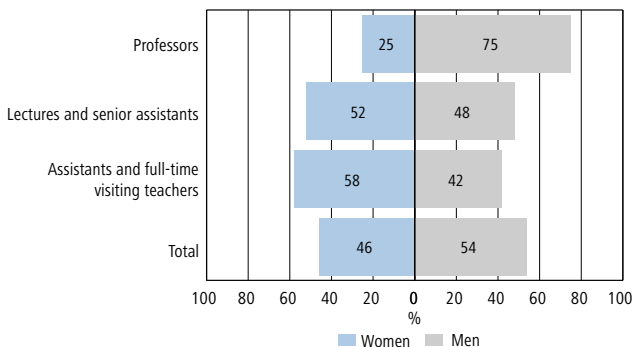
Source: Education Statistics, Statistics Finland

### 2.17 Teachers at comprehensive and upper secondary schools and vocational and professional institutions and polytechnics 2008



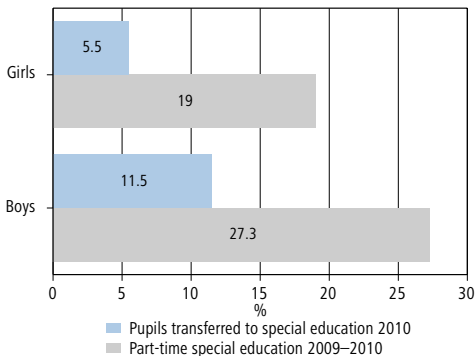
Source: Education Statistics, Statistics Finland

## 2.18 Teachers at universities 2008



Source: Education Statistics, Statistics Finland

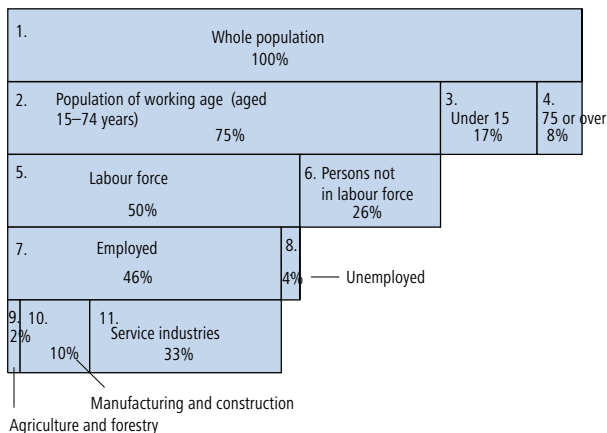
## 2.19 Proportion of pupils transferred to special education and recipients of part-time special education of all comprehensive school pupils in 2010 and in the academic years 2009–2010



Source: Education Statistics, Statistics Finland

## 3 Labour market

### 3.1 Population by main groups 2010



	Total	Women	Men
1. Whole population	5 363 000	2 732 000	2 632 000
2. Population of working age aged 15–74	4 044 000	2 020 000	2 024 000
3. Under 15 years old	888 000	434 000	454 000
4. 75 years old or over	431 000	277 000	154 000
5. Labour force	2 672 000	1 287 000	1 385 000
6. Persons not in labour force aged 15–74	1 372 000	639 000	733 000
7. Employed	2 447 000	1 188 000	1 259 000
8. Unemployed	224 000	98 000	126 000
9. Agriculture and forestry	115 000	33 000	82 000
10. Manufacturing and construction	560 000	117 000	443 000
11. Service industries	1 762 000	1 032 000	729 000

Source: Labour Force Survey, Statistics Finland

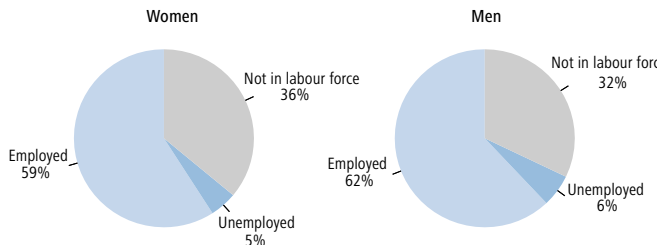
## 3.2 Women and men in the labour market 2010 (aged 15–74 years)

	1 000 persons			Proportion (%)		
	Total	Women	Men	Total	Women	Men
<b>AGED 15–74 YEARS</b>	<b>4 043</b>	<b>2 020</b>	<b>2 024</b>	<b>100</b>	<b>50,0</b>	<b>50,1</b>
Not in the labour force	1 372	733	639	100	53,4	46,6
In the labour force	2 672	1 287	1 385	100	48,2	51,8
– employed	2 447	1 188	1 259	100	48,5	51,5
– unemployed	224	98	126	100	43,8	56,3
Employment rate 15–64 years, %	67,8	66,9	68,7			
Unemployment rate, %	8,4	7,6	9,1			
<b>EMPLOYED</b>	<b>2 447</b>	<b>1 188</b>	<b>1 259</b>	<b>100</b>	<b>48,5</b>	<b>51,5</b>
<b>Working time</b>						
– part-time work	358	232	125	100	64,8	34,9
– full-time work	2 087	955	1 133	100	45,8	54,3
<b>Employer</b>	<b>2 447</b>	<b>1 188</b>	<b>1 259</b>	<b>100</b>	<b>48,5</b>	<b>51,5</b>
Private sector	1 774	704	1 070	100	39,7	60,3
Public sector	663	478	185	100	72,1	27,9
– local government	510	399	111	100	78,2	21,8
– central government	153	79	74	100	51,6	48,4
Unknown	10	6	4	100	60,0	40,0
<b>Occupational status/ socio-economic status</b>	<b>2 447</b>	<b>1 188</b>	<b>1 259</b>	<b>100</b>	<b>48,5</b>	<b>51,5</b>
Self-employed persons and unpaid family members	328	107	221	100	32,6	67,4
Employees	2 120	1 082	1 038	100	51,0	49,0
– upper salaried staff	626	283	343	100	45,2	54,8
– senior officials and upper management	134	44	90	100	32,8	67,2
– lower salaried staff	805	592	213	100	73,5	26,5
– wage earners	682	203	478	100	29,8	70,1
– unknown	7	4	4			
<b>Industry</b>	<b>2 447</b>	<b>1 188</b>	<b>1 259</b>	<b>100</b>	<b>48,5</b>	<b>51,5</b>
Agriculture and forestry	115	33	82	100	28,7	71,3
Manufacture, construction	560	117	443	100	20,9	79,1
Services	1762	1032	729	100	58,6	41,4
Unknown	12	6	6	100	50,0	50,0
<b>Actual hours worked (mill.)</b>	<b>3 998,2</b>	<b>1 784,5</b>	<b>2 213,6</b>	<b>100</b>	<b>44,6</b>	<b>55,4</b>

Source: Labour Force Survey, Statistics Finland

## 3 Labour market

### 3.3 Population aged 15–74 years by economic activity 2010



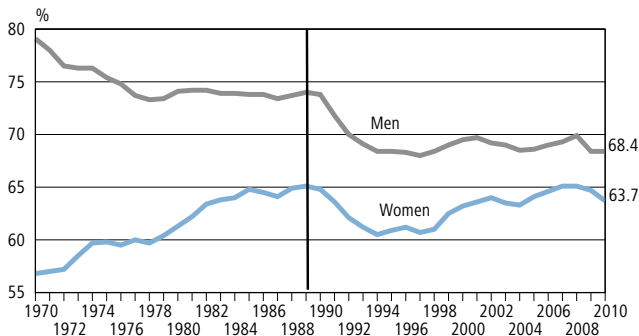
Source: Labour Force Survey, Statistics Finland

### 3.4 Employed, unemployed and not in the labour force by age group 2010, 1 000 persons

	Population		Employed		Unemployed		Not in the labour force	
	Women	Men	Women	Men	Women	Men	Women	Men
15–74	2 020	2 024	1 188	1 259	98	126	733	639
15–64	1 758	1 797	1 176	1 234	98	126	484	437
15–19	167	167	39	27	16	14	112	126
20–24	155	171	90	94	14	23	51	53
25–29	166	179	117	142	11	16	38	21
30–34	167	172	121	150	8	10	38	12
35–39	157	155	123	134	9	9	24	12
40–44	171	184	143	159	9	11	19	14
45–49	187	191	159	160	9	12	19	18
50–54	188	188	156	151	9	13	24	24
55–59	194	192	146	134	10	12	39	46
60–64	207	198	82	83	4	5	120	110
65–69	139	123	10	18	0	0	129	105
70–74	123	104	3	7	0	0	121	97

Source: Labour Force Survey, Statistics Finland

## 3.5 Labour force participation rate 1970–2010, aged 15–74 years



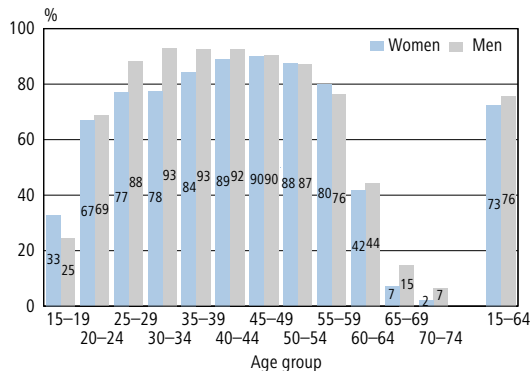
From 1989 onwards, the figures are in compliance with the ILO/EU definition.

Labour force = Employed + unemployed

Labour force participation rate = Labour force as a percentage of population aged 15–74.

Source: Labour Force Survey, Statistics Finland

## 3.6 Labour force participation by age group 2010



Source: Labour Force Survey, Statistics Finland

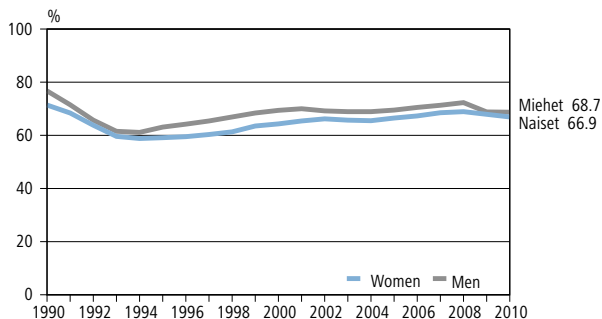
## 3 Labour market

### 3.7 Labour force participation of the parents with children under 18 years by number of children 2010

	Population aged 15–64		Number in labour force		Labour force participation	
	1 000 persons				%	
	Women	Men	Women	Men	Women	Men
<b>Total</b>	<b>1 758</b>	<b>1 797</b>	<b>1 280</b>	<b>1 367</b>	<b>72.8</b>	<b>76.1</b>
No children under 18	1 225	1 296	852	889	69.5	68.6
With children under 18	533	501	428	478	80.4	95.3
1 child	229	208	188	196	82.2	94.6
2 children	196	189	165	182	84.3	96.1
3 or more children	108	105	75	100	69.6	95.3
With children under 7	268	260	183	251	68.2	96.3
1 child	161	155	120	149	74.8	96.3
2 or more children	107	106	62	102	58.3	96.3

Source: Labour Force Survey, Statistics Finland

### 3.8 Women and men aged 15–64 by employment rate 1990–2010



The official employment rate = The ratio of the employed to the total population aged 15–64

Source: Labour Force Survey, Statistics Finland



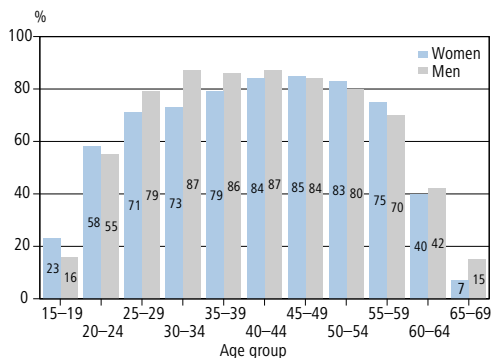
## 3.9 Employment rates in EU countries 2010

	15–64 years		15–64 years	
	Women	Men	Women	Men
<b>EU-27</b>	<b>58</b>	<b>70</b>	<b>39</b>	<b>55</b>
Austria	66	77	34	52
Belgium	57	67	29	46
Bulgaria	56	63	38	50
Cyprus	63	77	43	71
Czech Republic	56	74	36	58
Denmark	71	76	53	63
Estonia	61	62	55	52
<b>Finland</b>	<b>67</b>	<b>69</b>	<b>57</b>	<b>56</b>
France	60	68	37	42
Germany	66	76	51	65
Greece	48	71	29	57
Hungary	51	60	30	40
Ireland	56	64	42	58
Italy	46	68	26	48
Latvia	59	59	49	48
Lithuania	59	57	46	52
Luxembourg	57	73	31	48
Malta	39	72	13	48
Netherlands	69	80	43	65
Poland	53	66	24	45
Portugal	61	70	44	56
Romania	52	66	33	50
Slovakia	52	65	29	54
Slovenia	63	70	25	46
Spain	52	65	33	55
Sweden	70	75	67	74
United Kingdom	65	75	50	65

Source: Eurostat

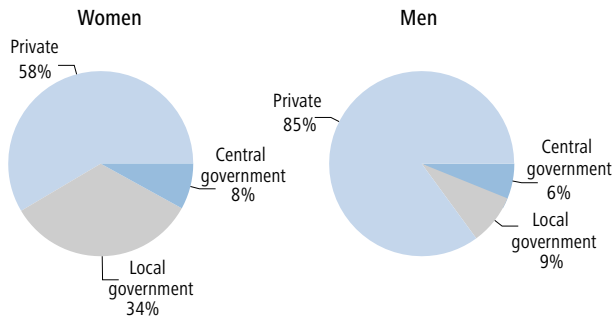
## 3 Labour market

### 3.10 Employment rate by age group 2010



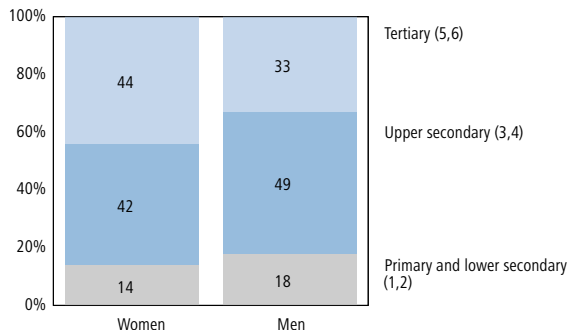
Source: Labour Force Survey, Statistics Finland

### 3.11 Employed persons aged 15–74 years by employer sector 2010

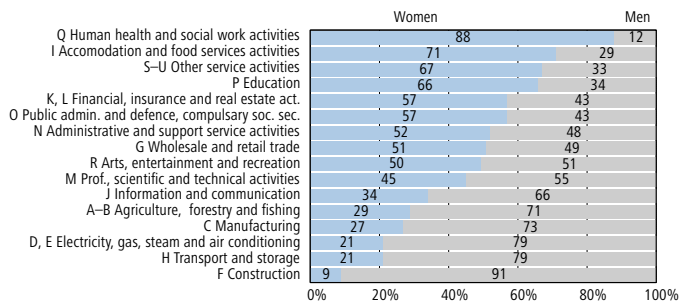


Source: Labour Force Survey, Statistics Finland

## 3.12 Level of education of the employed 2009



Source: Labour Force Survey, Statistics Finland

3.13 Industries by female/male-domination 2010  
(proportions of employed persons in the industry)

Standard Industrial Classification 2008

Source: Labour Force Survey, Statistics Finland

### 3 Labour market

#### 3.14 Proportion of the employees working part-time and with a fixed-term contract 2000–2010

	Employees		Employed part-time		Fixed-term employees	
	1 000 persons		Percentage of employees			
	Women	Men	Women	Men	Women	Men
2000	1 006	1 011	16.9	7.2	19.9	13.0
2001	1 027	1 033	16.8	7.1	20.0	13.0
2002	1 043	1 025	17.2	7.7	19.6	12.6
2003	1 037	1 024	17.5	7.6	20.0	12.7
2004	1 039	1 025	18.3	8.0	19.6	12.7
2005	1 060	1 038	18.1	8.0	20.0	12.9
2006	1 078	1 051	18.7	8.2	20.0	12.7
2007	1 103	1 075	18.6	8.0	19.4	12.4
2008	1 112	1 095	17.6	7.7	18.8	11.3
2009	1 094	1 029	18.4	7.9	18.4	10.6
2010	1 082	1 038	19.1	8.4	18.5	12.4

Source: Labour Force Survey, Statistics Finland

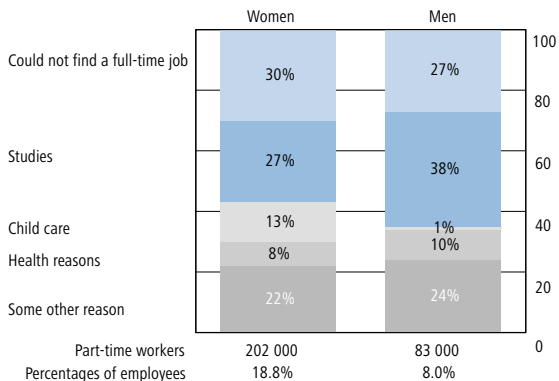
## 3.15 Percentage of persons in employment working part-time in EU countries 2010

	Employees working part-time	
	Women	Men
<b>EU-27</b>	<b>31.9</b>	<b>8.7</b>
Austria	43.8	9.0
Belgium	42.3	9.0
Bulgaria	2.6	2.2
Cyprus	12.7	6.5
Czech Republic	9.9	2.9
Denmark	39.0	15.2
Estonia	14.5	7.1
<b>Finland</b>	<b>19.6</b>	<b>10.0</b>
France	30.1	6.7
Germany	45.5	9.7
Greece	10.4	3.7
Hungary	8.0	3.9
Ireland	34.7	11.8
Italy	29.0	5.5
Latvia	11.4	7.8
Lithuania	9.3	6.7
Luxembourg	36.0	4.0
Malta	25.0	6.0
Netherlands	76.5	25.4
Poland	11.5	5.7
Portugal	15.5	8.2
Romania	11.4	10.6
Slovakia	5.4	2.8
Slovenia	14.7	8.6
Spain	23.2	5.4
Sweden	40.4	14.0
United Kingdom	43.3	12.6

Source: Eurostat

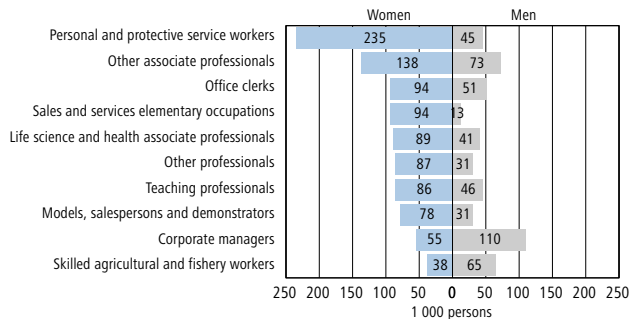
## 3 Labour market

### 3.16 Reasons for working part-time 2010, employees aged 15–64 years



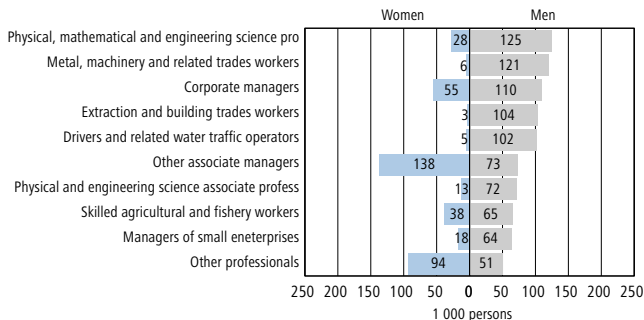
Source: Labour Force Survey, Statistics Finland

### 3.17 Principal occupations of employed women <sup>1)</sup> 2010



1) Classification of Occupation 2001, 2 digit level

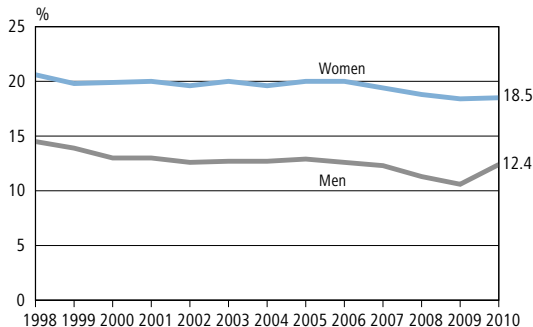
Source: Labour Force Survey, Statistics Finland

3.18 Principal occupations of employed men <sup>1)</sup> 2010

1) Classification of Occupation 2001, 2 digit level

Source: Labour Force Survey, Statistics Finland

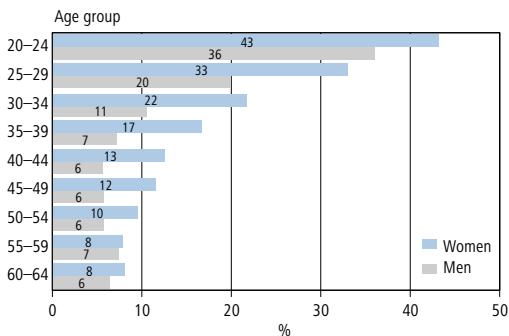
## 3.19 Proportion of fixed-term employees of the employees aged 15–64 years 1998–2010



Source: Labour Force Survey, Statistics Finland

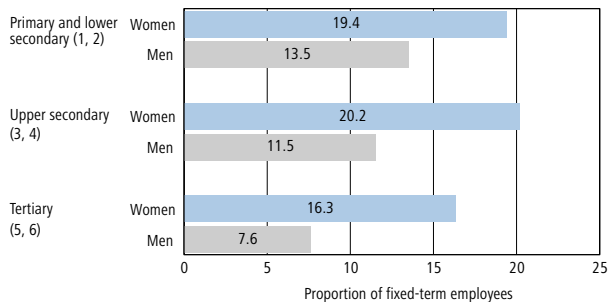
### 3 Labour market

#### 3.20 Proportion of fixed-term employees of all employees by age group 2010



Source: Labour Force Survey, Statistics Finland

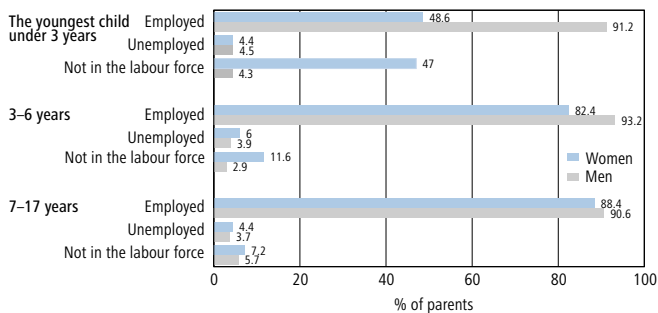
#### 3.21 Proportion of fixed-term employees by level of education 2009



Source: Labour Force Survey, Statistics Finland



## 3.22 Parents by economic activity and the youngest child 2010, %



Source: Labour Force Survey, Statistics Finland

## 3.23 Self-employed persons and unpaid family members by industry 2010

Industry	Total 1 000 persons	Women		Men		Gender distribution, %	
		1 000 persons	%	1 000 persons	%	Women	Men
All industries	328	107	100	221	100	33	67
A, B Maa-, metsä- ja kalatalous; kaivostoiminta	76	22	21	54	24	29	71
C-F Manufacturing, construction	62	7	7	55	25	12	88
G-U Services	189	77	72	112	51	41	59
X Industry unknown	1	0	0	0	0	0	0

Source: Labour Force Survey, Statistics Finland

### 3 Labour market

#### 3.24 Unemployed and unemployment rates 1990–2010, %

Year	Unemployed 1 000 persons			Percent- age of women	Percent- age of men	Unemployment rate, %		
	Total	Women	Men			Total	Women	Men
1990	82	33	49	40	60	3.2	2.7	3.6
1992	292	114	178	39	61	11.7	9.6	13.6
1994	408	173	235	42	58	16.6	14.8	18.1
1996	363	176	186	48	52	14.6	14.9	14.3
1998	285	142	143	50	50	11.4	12.0	10.9
2000	253	131	122	52	48	9.8	10.6	9.1
2002	237	114	123	48	52	9.1	9.1	9.1
2004	229	111	118	48	52	8.8	8.9	8.7
2006	204	104	101	51	49	7.7	8.1	7.4
2008	172	87	85	51	49	6.4	6.7	6.1
2009	221	99	122	45	55	8.2	7.6	8.9
2010	224	98	126	44	56	8.4	7.6	9.1

Source: Labour Force Survey, Statistics Finland

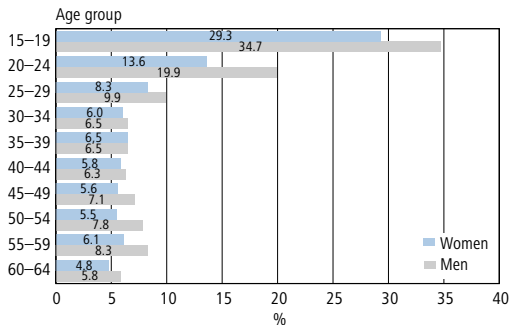
## 3.25 Unemployment rates in EU countries 2010

	Total	Women	Men
<b>EU-27</b>	<b>9.7</b>	<b>9.6</b>	<b>9.7</b>
Austria	4.4	4.2	4.6
Belgium	8.3	8.5	8.1
Bulgaria	10.2	9.5	10.9
Cyprus	6.2	6.4	6.0
Czech Republic	7.3	8.5	6.4
Denmark	7.4	6.6	8.2
Estonia	16.9	14.3	19.5
<b>Finland</b>	<b>8.4</b>	<b>7.6</b>	<b>9.1</b>
France	9.8	10.2	9.4
Germany	7.1	6.6	7.5
Greece	12.6	16.2	9.9
Hungary	11.2	10.7	11.6
Ireland	13.7	9.7	16.9
Italy	8.4	9.7	7.6
Latvia	18.7	15.7	21.7
Lithuania	17.8	14.5	21.2
Luxembourg	4.6	5.5	3.8
Malta	6.9	7.1	6.8
Netherlands	4.5	4.5	4.4
Poland	9.6	10.0	9.3
Portugal	12.0	12.2	11.8
Romania	7.3	6.5	7.9
Slovakia	14.4	14.6	14.2
Slovenia	7.3	7.1	7.5
Spain	20.1	20.5	19.7
Sweden	8.4	8.2	8.5
United Kingdom	7.8	6.8	8.6

Source: Eurostat

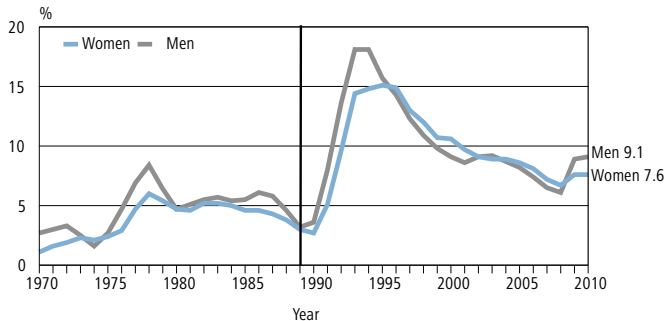
## 3 Labour market

### 3.26 Unemployment rates by age group 2010



Source: Labour Force Survey, Statistics Finland

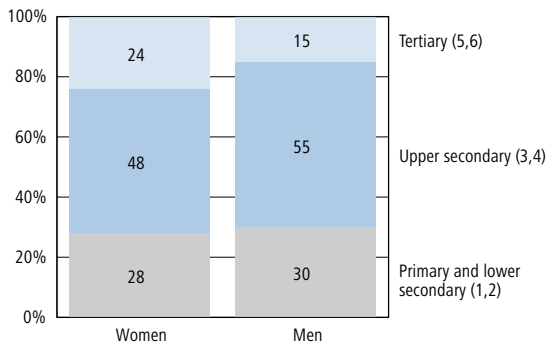
### 3.27 Unemployment rates 1970-2010, aged 15-74 years



From 1989 onwards, the figures are in compliance with the revisions made in 1998.  
Unemployment rate = The ratio of the unemployed to all persons in the labour force.

Source: Labour Force Survey, Statistics Finland

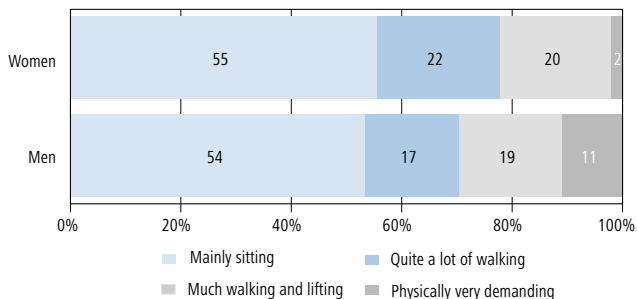
## 3.28 Level of education of the unemployed 2009



Source: Labour Force Survey, Statistics Finland

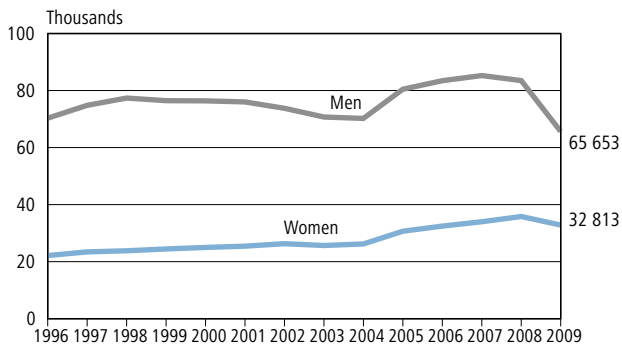
## 3 Labour market

### 3.29 Physical burden of job 2010



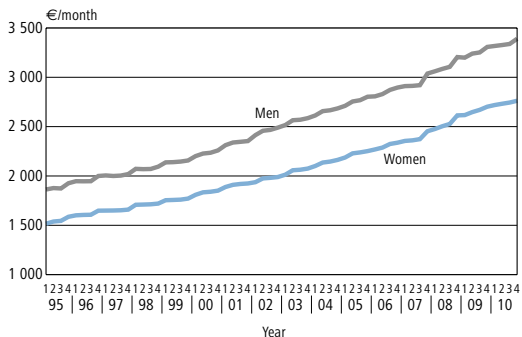
Source: *Health Behaviour among the Finnish Adult Population 2010*, National Institute for Health and Welfare

### 3.30 Wage earners' accidents at work 1996-2009



Source: *Occupational accident statistics*, Statistics Finland

## 4.1 Average earnings 1995–2010



Average monthly earnings represent earnings for normal working hours at full wage and salary. Average earnings are calculated from material in the index of wage and salary earnings. In the calculation, average earnings for different employee groups are formed by using the numbers of employees as weights.

Source: *Index of Wage and Salary Earnings, Statistics Finland*

## 4.2 Average monthly earnings of employees by sector (women's earnings as a percentage of those of men) 1985–2010

	Total	Private sector	Central government	Municipalities
1985	79	76	80	83
1990	80	77	83	83
1995	82	81	81	85
2000	82	83	81	85
2001	82	83	81	84
2002	80	81	80	84
2003	80	81	81	84
2004	80	81	81	85
2005	81	82	82	83
2006	81	82	82	83
2007	81	82	83	83
2008	81	83	84	84
2009	82	84	84	84
2010	82	85	84	84

Source: *Index of Wage and Salary Earnings, Statistics Finland*

## 4 Earnings

### 4.3 Average monthly earnings of employees by sector 2000–2010, €

	All employees		Private sector		Municipalities		Central government	
	Women	Men	Women	Men	Women	Men	Women	Men
2000	1 820	2 257	1 824	2 261	1 796	2 124	1 927	2 411
2001	1 904	2 371	1 923	2 380	1 858	2 204	2 038	2 537
2002	1 971	2 457	1 994	2 467	1 915	2 281	2 120	2 635
2003	2 052	2 559	2 079	2 572	1 990	2 360	2 216	2 740
2004	2 137	2 655	2 163	2 668	2 074	2 450	2 314	2 845
2005	2 239	2 774	2 299	2 798	2 179	2 611	2 402	2 933
2006	2 305	2 851	2 363	2 871	2 245	2 697	2 480	3 023
2007	2 386	2 945	2 440	2 967	2 330	2 799	2 579	3 102
2008	2 530	3 114	2 591	3 135	2 460	2 930	2 782	3 325
2009	2 659	3 250	2 764	3 272	2 546	3 018	2 943	3 498
2010	2 739	3 343	2 851	3 366	2 633	3 119	3 055	3 629

Source: *Index of Wage and Salary Earnings, Statistics Finland*

### 4.4 Average monthly earnings of employees in manufacturing and wholesale and retail trade 2002–2010, €

	Manufacturing		Trade	
	Women	Men	Women	Men
2002	2 061	2 477	1 839	2 497
2004	2 269	2 699	1 973	2 647
2006	2 477	2 903	2 129	2 835
New weight structure				
2008	2 724	3 174	2 390	3 103
2009	2 846	3 272	2 613	3 406
2010	2 937	3 337	2 726	3 550

Source: *Index of Wage and Salary Earnings, Statistics Finland*

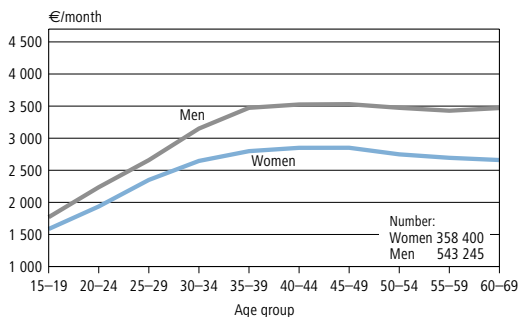


#### 4.5 Average monthly earnings of employees in education and health services 2002–2010, €

	Education Women	Men	Health services Women	Men
2002	2 164	2 519	2 017	2 842
2004	2 348	2 713	2 172	3 068
2006	2 523	2 903	2 330	3 289
New weight structure				
2008	2 881	3 292	2 586	3 647
2009	3 010	3 414	2 669	3 702
2010	3 098	3 490	2 764	3 790

Source: *Index of Wage and Salary Earnings, Statistics Finland*

#### 4.6 Average monthly earnings by age group in the private sector 2009

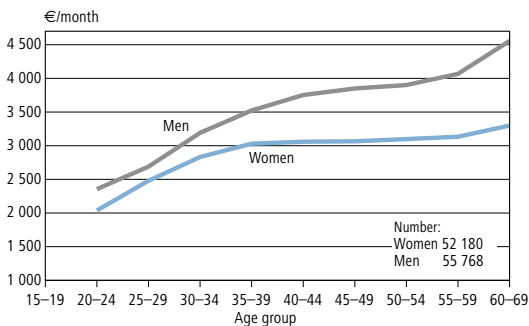


In the structure of earnings statistics, monthly earnings measure the remuneration paid for regular, additional and overtime working hours. One-off payments, such as e.g. holiday pay, are not included in these earnings.

Source: *Structure of Earnings Statistics, Statistics Finland*

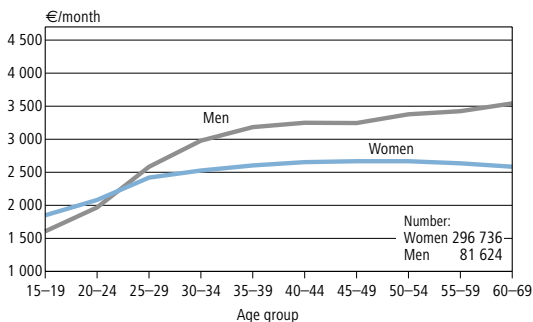
## 4 Earnings

### 4.7 Average monthly earnings by age group in central government 2009



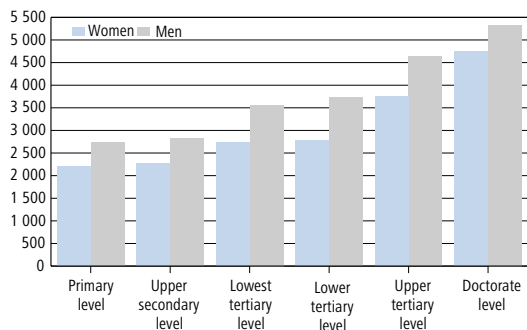
Source: Structure of Earnings Statistics, Statistics Finland

### 4.8 Average monthly earnings by age group in local government 2009



Source: Structure of Earnings Statistics, Statistics Finland

#### 4.9 Monthly earnings of full-time employees by level of education 2009



Source: Structure of Earnings Statistics, Statistics Finland

#### 4.10 Gender pay gap in EU countries 2008/2009

<b>EU27</b>	<b>17.5</b>	Lithuania	15.3
		Luxembourg	12.5
Austria	25.4	Malta	6.9
Belgium	..	Netherlands	19.2
Bulgaria	15.3	Norway	16.7
Cyprus	21.0	Poland	9.8
Czech	25.9	Portugal	10.0
Denmark	16.8	Romania	8.1
<b>Finland</b>	<b>20.4</b>	Schwitzerland	18.4
France	17.9	Slovakia	21.9
Germany	23.2	Slovenia	3.2
Greece	22.0	Spain	16.1
Hungary	17.1	Sweden	16.0
Italia	5.5	United Kingdom	20.4
Latvia	14.9		

Source: Eurostat

## 5 Income

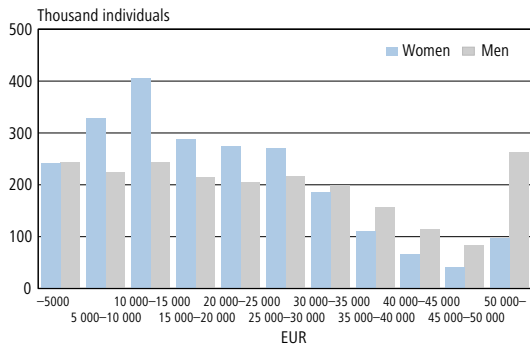
### 5.1 Women's and men's income 2009

	Women	Men
<b>Income recipients, total</b>	<b>2 311 198</b>	<b>2 167 385</b>
Number of individuals receiving earned income	2 286 358	2 137 002
Number of individuals receiving capital income	553 858	656 164
<b>Income subject to state taxation, total € million</b>	<b>48 651</b>	<b>61 779</b>
Earned income subject to state taxation	46 911	58 095
Wages and salaries	31 251	40 779
Per diem and maternity allowances	883	349
Child home care allowance	356	14
Student grants	313	220
Unemployment benefits	1 320	1 782
Pensions	11 118	11 421
National pensions	1 568	850
Other pensions	9 550	10 571
Income from agriculture	310	725
Business income	981	1 731
Capital income, total	1 740	3 684
Dividend, taxable share	293	1 015
<b>State taxes, total</b>	<b>1 975</b>	<b>4 643</b>
<b>Municipal tax</b>	<b>6 386</b>	<b>8 710</b>
<b>Taxes and charges, total</b>	<b>9 426</b>	<b>14 755</b>

The most essential income concept in the statistics on taxable incomes is income subject to state taxation. Income subject to taxation does not include, among other things, some social benefits, pensions, daily allowances and compensations such as family allowance, housing benefit, income maintenance benefit, additional amount of national pension and veterans' pension. Interest on usual bank deposits and bonds is tax-free, the statistics also exclude interest income subject to taxation at source. Scholarships and grants received from general government are not subject to taxation, either. Income subject to taxation is divided to earned and capital income. Taxes on capital income are paid solely to the state. Besides the state income tax, municipal tax and national health insurance payment are determined according to earned income.

Source: *Taxable incomes, Statistics Finland*

## 5.2 Income subject to state taxation 2009



Source: Taxable incomes, Statistics Finland

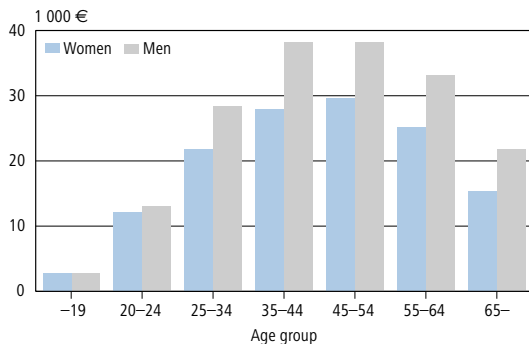
## 5.3 Distribution of individuals by income subject to state taxation 2009

Income bracket (€)	Income earners, %		Proportion of women in the income bracket
	Women	Men	%
- 5 000	10	11	50
5 000-10 000	14	10	59
10 000-15 000	18	11	63
15 000-20 000	12	10	57
20 000-25 000	12	10	57
25 000-30 000	12	10	55
30 000-35 000	8	9	48
35 000-40 000	5	7	41
40 000-45 000	3	5	37
45 000-50 000	2	4	34
50 000-	4	12	27
<b>Total</b>	<b>100</b>	<b>100</b>	<b>52</b>
<b>Number</b>	<b>2 311 198</b>	<b>2 167 385</b>	

Source: Taxable incomes, Statistics Finland

## 5 Income

### 5.4 Average income subject to state taxation by age group 2009



Source: Taxable incomes, Statistics Finland

### 5.5 Debtors and debts by age group 2010

	Debtors total, number			%	
	Total	Women	Men	Women	Men
Age groups, total	2 213 275	1 102 788	1 110 487	50	50
-29	393 553	199 196	194 357	51	49
30-39	501 562	244 613	256 949	49	51
40-49	513 208	254 298	258 910	50	50
50-59	440 085	220 916	219 169	50	50
60-	364 867	183 765	181 102	50	50

	Debts total, EUR			%	
	Total	Women	Men	Women	Men
Age groups, total	100 001 129 852	44 131 446 929	55 869 682 923	44	56
-29	13 793 100 777	6 535 886 457	7 257 214 320	47	53
30-39	32 548 275 259	14 586 582 461	17 961 692 798	45	55
40-49	28 628 327 761	12 376 831 746	16 251 496 015	43	57
50-59	16 935 419 698	7 275 579 047	9 659 840 651	43	57
60-	8 096 006 357	3 356 567 218	4 739 439 139	41	59

Source: Indebtedness, Statistics Finland

## 5.6 Income by type of household 2007 and 2009

Reference person is aged under 65 years

	2007		2009	
	Households number 1000	Median Disposable income €	Households number 1 000	Median Disposable income €
Couples without children	527.8	41 605	546.7	43 416
Couple with 1 child	158.2	44 244	168.6	46 043
Couple with 2 children	179.3	50 077	183.6	52 114
Couple with 3 children	92.4	50 754	89.3	52 818
Woman living alone	293.6	18 205	295.3	20 187
Man living alone	336.9	18 686	356.6	20 341
Woman with children	72.0	21 784	65.0	26 026
Man with children	12.3	30 924	13.6	34 275

Disposable income of households has been calculated according to income data on households as follows:  
 Earned income + entrepreneurial income + property income + current transfers received – current  
 transfers paid = disposable income

Median income is the level of income that divides the data in half. One half of households receive more  
 and one half less than the median income.

The number of households has been estimated from the sample survey. Their number differs from the  
 family statistics.

Source: *Income Distribution Statistics, Statistics Finland*

## 5.7 Households in receipt of social assistance by type of household 1990, 1995, 2000, 2005 and 2009 %

Type of household	1990	1995	2000	2005	2009
Single women without children <sup>1)</sup>	24.5	24.8	26.0	27.8	27.3
Single men without children <sup>1)</sup>	39.0	38.1	39.0	42.3	43.3
Single women with children	10.9	9.0	10.7	11.3	10.8
Single men with children	1.3	1.1	1.1	1.1	1.1
Couples/cohabiters without children	10.0	12.1	11.0	7.8	7.8
Couples/cohabiters with children	14.2	14.9	12.1	9.7	9.7
<b>Total</b>	<b>100</b>	<b>100</b>	<b>100</b>	<b>100</b>	<b>100</b>
<b>Number</b>	<b>181 600</b>	<b>339 000</b>	<b>271 700</b>	<b>238 800</b>	<b>238 800</b>

1) Incl. children aged 18 or over living with their parents.

Source: *Social Assistance 2009, National Institute for Health and Welfare*

## 5 Income

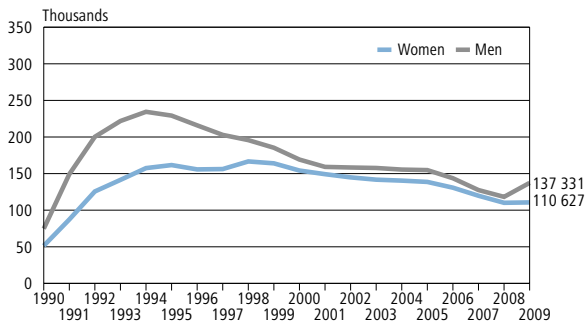
### 5.8 Households in receipt of social assistance by type of household 2009

Type of household	Number	% of households in Finland
Single women without children <sup>1)</sup>	65 086	8.3
Single men without children <sup>1)</sup>	103 373	13.9
Single women with children	25 813	25.3
Single men with children	2 540	16.3
Couples/cohabiters without children	18 668	2.3
Couples/cohabiters with children	23 275	5.0
<b>Total</b>	<b>238 755</b>	<b>8.2</b>

1) Incl. children aged 18 or over living with their parents.

Source: Social Assistance 2009, National Institute for Health and Welfare

### 5.9 Recipients of basic unemployment allowance and labour market support 1990–2009



Only basic unemployment allowance is included in pre-1994 data.

Source: Statistical Yearbook on Unemployment Protection in Finland 2009, Financial Supervisory Authority and Social Insurance Institution



## Unemployment-related benefits

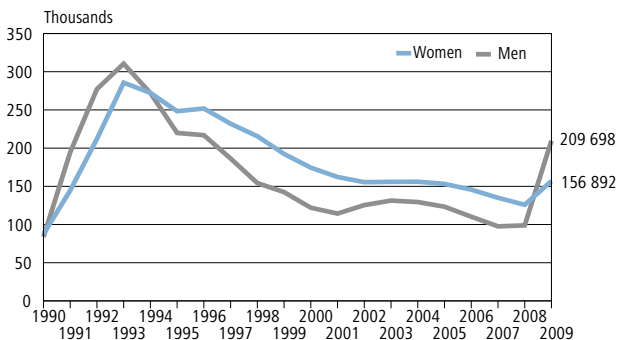
Earnings-related allowance is payable to unemployed members of an unemployment fund who as members satisfy the employment condition.

The basic unemployment allowance is payable to unemployed persons aged 17–67 who have registered with an employment office, are seeking employment, and satisfy the so-called employment condition.

Cash labour market support is payable to unemployed persons who have received basic or earnings-related allowance for the maximum period allowed or are not entitled to unemployment allowance by reason of not satisfying the employment condition.

Source: Social Insurance Institution

### 5.10 Recipients of earnings-related unemployment allowance 1990–2009



Source: Statistical Yearbook on Unemployment Protection in Finland 2009, Financial Supervisory Authority and Social Insurance Institution

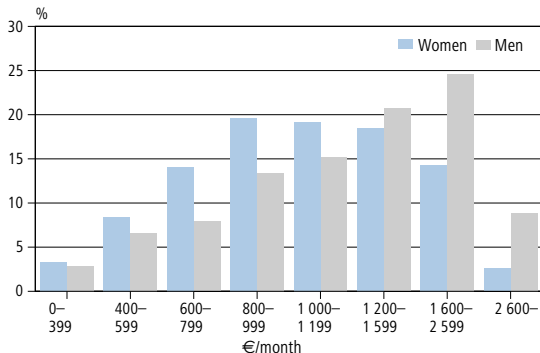
## 5 Income

### 5.11 Recipients of earnings-related unemployment allowance, basic unemployment allowance and labour market subsidy by age 2009, %

Age	Earnings-related unemployment allowance, %		Basic unemployment allowance, %		Labour market subsidy, %	
	Women	Men	Women	Men	Women	Men
17–19	17	83	26	74	47	53
20–24	32	68	35	65	42	58
25–29	39	61	41	59	47	53
30–34	43	57	42	58	48	52
35–39	44	56	43	57	49	51
40–44	44	56	43	57	48	52
45–49	43	57	40	60	45	55
50–54	43	57	41	59	44	56
55–59	45	55	43	57	47	53
60–64	45	55	46	54	53	47
Total	43	57	40	60	46	54
<b>Total nr</b>	<b>156 892</b>	<b>209 698</b>	<b>25 859</b>	<b>38 090</b>	<b>84 768</b>	<b>99 241</b>

Source: Statistical Yearbook on Unemployment Protection in Finland 2009, Financial Supervisory Authority and Social Insurance Institution

### 5.12 Monthly pensions of all pensioners 2009



Source: Statistical Yearbook on Unemployment Protection in Finland 2009, Financial Supervisory Authority and Social Insurance Institution

## 5.13 All pensioners by pension component 1992–2009

	All pensioners		Percentage of employment pensioners of all pensioners		Percentage of national pensioners of all pensioners	
	Women	Men	Women	Men	Women	Men
1992	700 600	482 300	85	91	91	92
1994	709 600	501 300	87	92	91	92
1996	718 800	513 800	88	92	91	90
1998	730 100	524 800	89	92	88	86
2000	743 300	540 900	90	92	84	79
2001 <sup>1)</sup>	748 400	548 000	90	93	63	45
2002	757 100	560 200	91	93	62	44
2003	761 300	568 700	91	93	61	43
2004	764 233	573 769	91	93	60	42
2005	772 046	584 240	92	93	59	41
2006	779 053	592 891	92	93	57	40
2007	787 262	602 570	92	93	56	39
2008	798 203	615 997	92	93	58	40
2009	811 095	632 094	92	93	56	39

1) From the beginning of 1996, the basic amount of the national pension became proportional to the earnings related pension. If the national pension did not include an additional amount the basic amount was reduced gradually up to the beginning of 2001. This meant that more than 300 000 pension recipients who had received both a national pension and an earnings-related pension became at the same time pension recipients who receive only an earnings-related pension.

Source: *Statistical Yearbook of Pensioners in Finland 2009*, The Central Pension Security Institute and the Social Insurance Institution

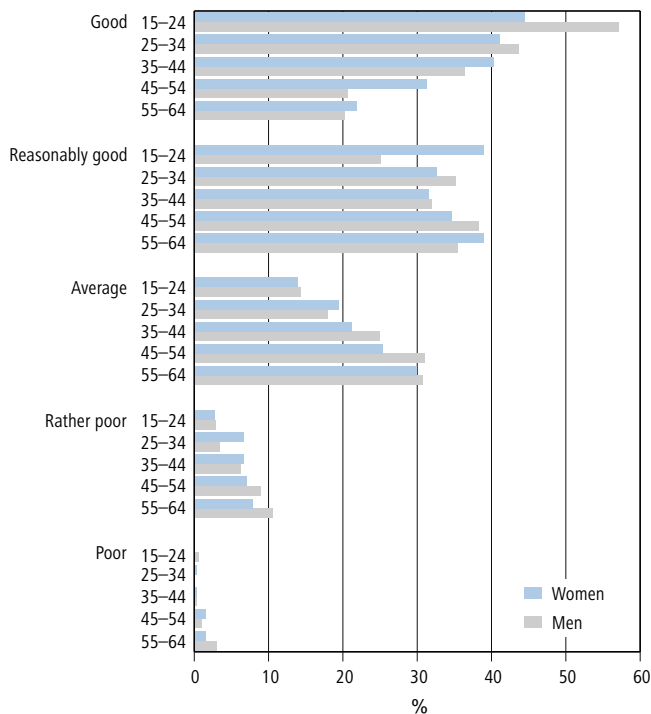
## 5 Income

### 5.14 Total pensioner population by size and composition of overall pension at 31.12.2009

Overall pension euro/month	All pensioners (%)		Employment pensioners (%)		National pensioners (%)	
	Women	Men	Women	Men	Women	Men
0– 399	3.3	2.9	2.5	2.2	3.2	4.8
400– 599	8.4	6.6	4.5	2.2	11.2	14.5
600– 799	14.1	7.9	14.7	8.3	22.1	17.1
800– 999	19.6	13.4	20.6	14.1	32.4	30.8
1 000–1 199	19.2	15.2	20.3	16.0	27.1	27.5
1 200–1 599	18.5	20.7	19.6	21.9	3.5	4.6
1 600–2 599	14.3	24.6	15.1	26.0	0.3	0.7
2 600–	2.6	8.9	2.7	9.4	0.1	0.1
Yhteensä	100	100	100	100	100	100
Average pension euro/month	1 159	1 483	1 194	1 538	870	867
Share of employment pension	969	1 336	1 022	1 413	550	543
Share of national pension	169	120	151	98	304	309

Source: Statistical Yearbook of Pensioners in Finland 2009, The Central Pension Security Institute and the Social Insurance Institution

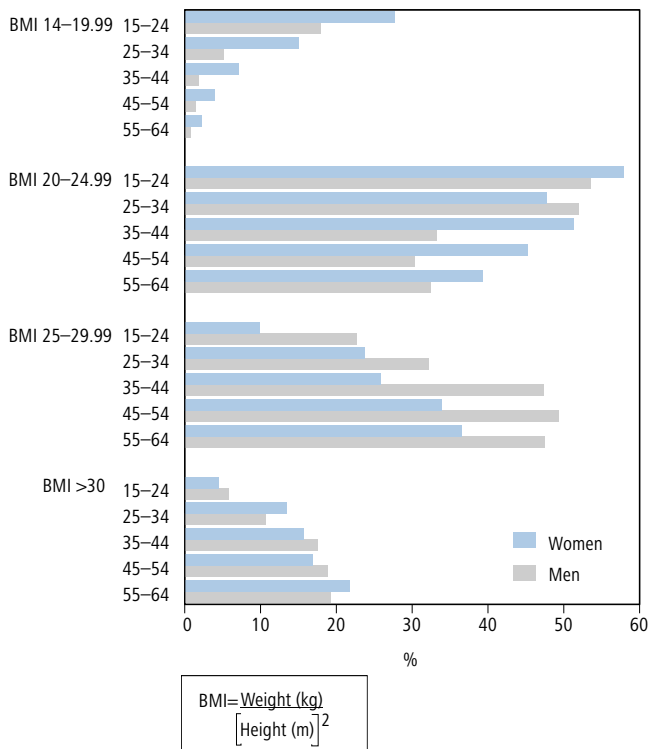
## 6.1 Self reported health, by age, 2010



Source: Health Behaviour and Health among the Finnish Adult Population, Spring 2010, National Institute for Health and Welfare

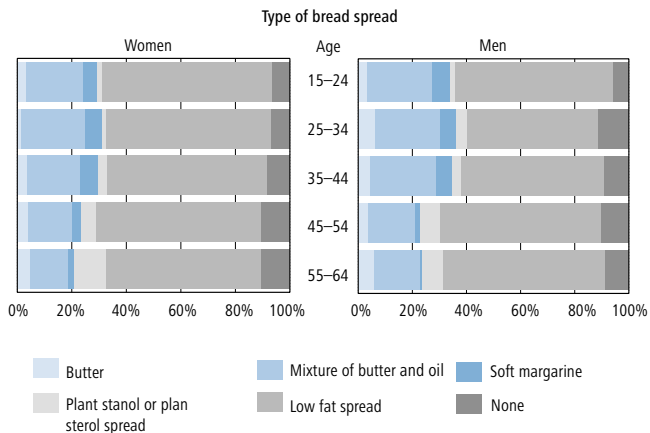
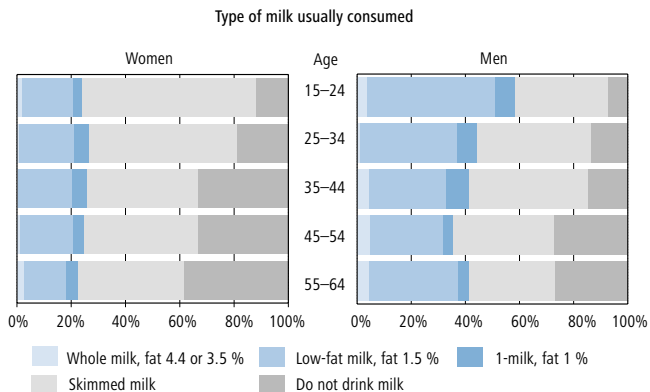
## 6 Health and exercise

### 6.2 Body mass index (BMI), by age, 2010



Source: Health Behaviour and Health among the Finnish Adult Population, Spring 2010, National Institute for Health and Welfare

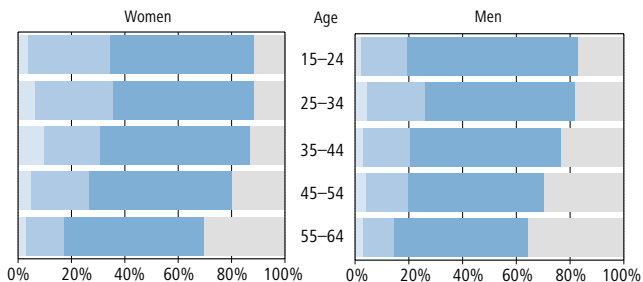
## 6.3 Eating habits, by age, 2010



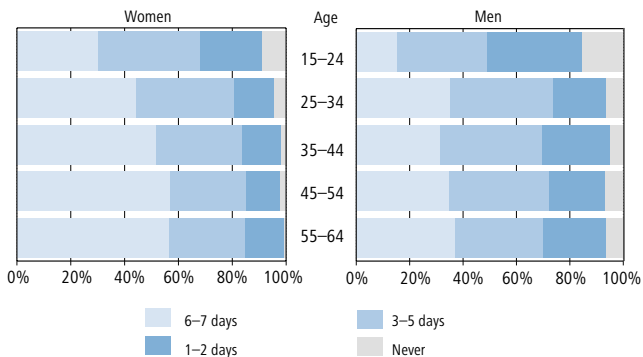
Source: *Health Behaviour and Health among the Finnish Adult Population, Spring 2010*, National Institute for Health and Welfare

## 6 Health and exercise

Consumption of chocolate or other sweets in the past week



Consumption of fresh vegetables in the past week

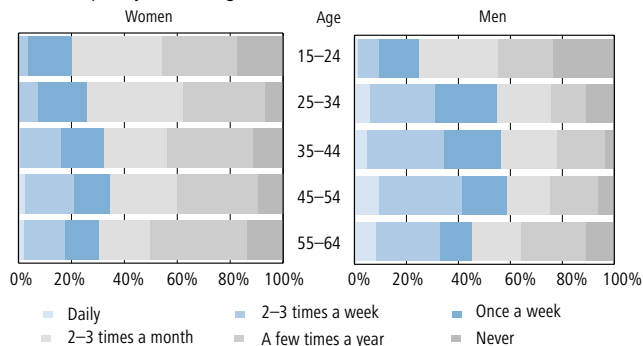


Source: Health Behaviour and Health among the Finnish Adult Population, Spring 2010, National Institute for Health and Welfare



## 6.4 Consumption of alcohol, by age, 2010

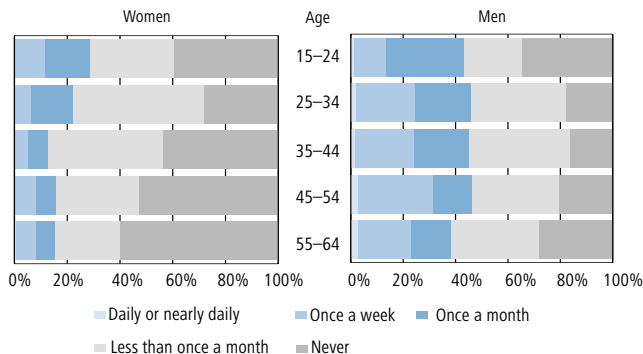
Frequency of drinking alcohol



Source: *Health Behaviour and Health among the Finnish Adult Population, Spring 2010*, National Institute for Health and Welfare

## 6.5 Consumption of alcohol, by age, 2010

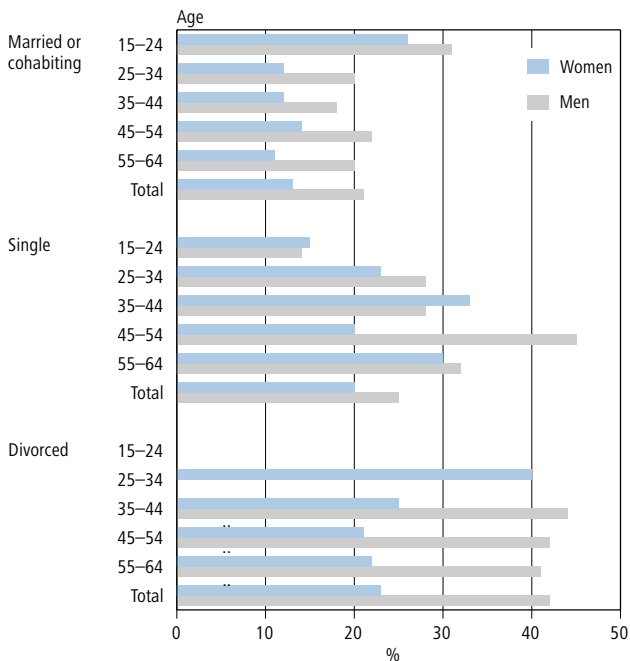
Frequency of consuming six or more portions of alcohol on a single occasion



Source: *Health Behaviour and Health among the Finnish Adult Population, Spring 2010*, National Institute for Health and Welfare

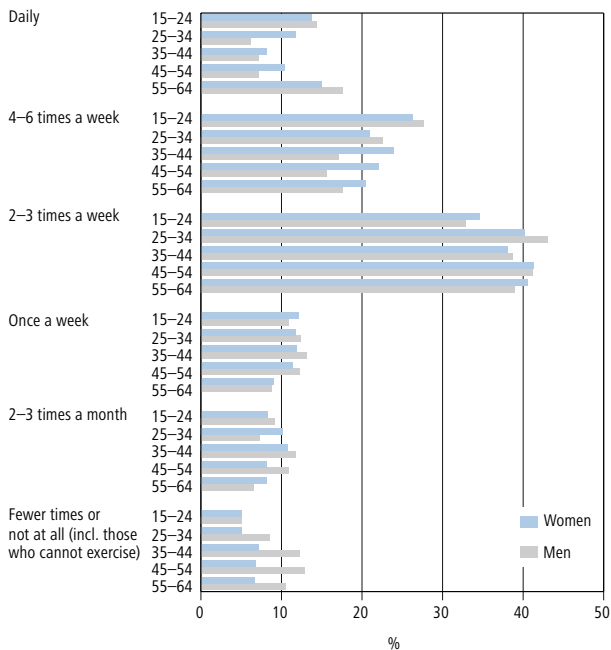
## 6 Health and exercise

### 6.6 Daily smokers, by age and marital status, 2010



Of widows, 10 per cent of women aged 55-64 are daily smokers.

Source: *Health Behaviour and Health among the Finnish Adult Population, Spring 2010*, National Institute for Health and Welfare

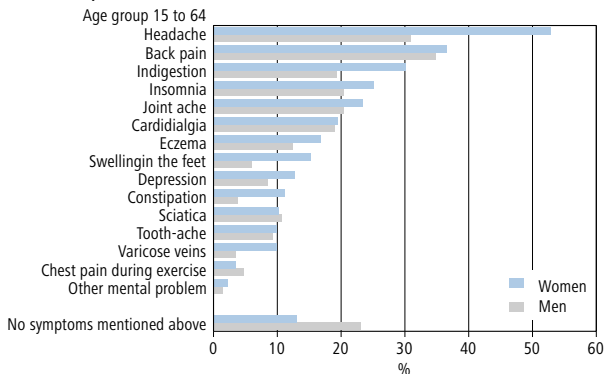
6.7 Leisure-time exercise, by age, 2010 <sup>1)</sup>

1) For at least half an hour and causing at least slight perspiration

Source: *Health Behaviour and Health among the Finnish Adult Population, Spring 2010*, National Institute for Health and Welfare

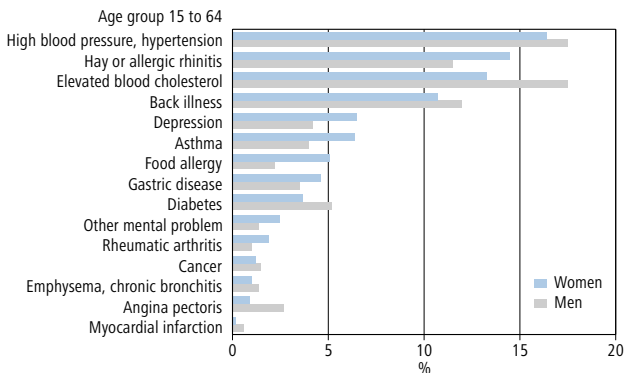
## 6 Health and exercise

### 6.8a Incidence of selected symptoms and complaints in the past month 2010



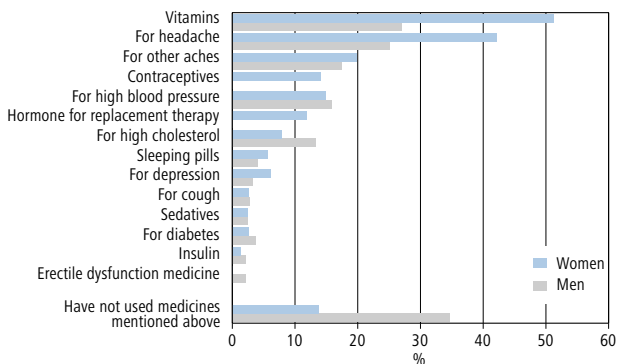
Source: *Health Behaviour and Health among the Finnish Adult Population, Spring 2010*, National Institute for Health and Welfare

### 6.8b Incidence of selected illnesses (treated or detected by a doctor) in the past year 2010



Source: *Health Behaviour and Health among the Finnish Adult Population, Spring 2010*, National Institute for Health and Welfare

## 6.9 Use of selected medicines in the past week 2010



Source: Health Behaviour and Health among the Finnish Adult Population, Spring 2010, National Institute for Health and Welfare

## 6.10 Sickness allowance 2010

	Total number of days covered	Recipients of sickness allowance	Total benefit expenditure	Per recipient
	1 000 pcs	Number	Million €	€
Women	8 217	184 285	405.8	49.4
Men	7 133	133 751	407.6	57.1
<b>Total</b>	<b>15 350</b>	<b>318 036</b>	<b>813.4</b>	

Source: Social Insurance Institution

## 6 Health and exercise

### 6.11 Deaths by cause of death 2010

	Total	Women	Men
Diseases of the circulatory system	20 587	10 588	9 999
Neoplasms	11 879	5 640	6 239
Diseases of the nervous system and sense organs	5 369	3 383	1 986
Accidents and violence	4 000	1 267	2 733
Diseases of the digestive system	2 460	965	1 495
Mental and behavioural disorders	2 355	1 557	798
Diseases of the respiratory system	1 988	767	1 221
Endocrine, nutritional and metabolic diseases	606	277	329
Certain infectious and parasitic diseases	436	236	200
Diseases of the genitourinary system	419	255	164
Diseases of the musculoskeletal system and connective tissue	234	172	62
Symptoms and ill-defined conditions	172	68	104
Congenital malformations	150	80	70
Diseases of blood and blood-forming organs	59	29	30
Certain conditions originating in the perinatal period	58	20	38
Diseases of the skin and subcutaneous tissue	28	15	13
Complications of pregnancy, childbirth and puerperium	3	3	0
Deaths without death certificates	107	41	66
<b>Total</b>	<b>50 910</b>	<b>25 363</b>	<b>25 547</b>

Source: Causes of Death Statistics, Statistics Finland

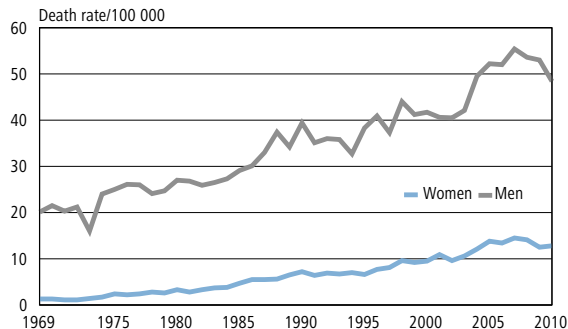
### 6.12 The most common causes of death among the working age population (aged 15 to 64) 2010

Women		
	Number of deaths	%
1. Breast cancer	347	10.9
2. Alcohol-related causes	323	10.1
3. Accidents	214	6.7
4. Suicides	192	6.0
5. Ischaemic heart disease	186	5.8
6. Lung cancer	177	5.6
Other causes of death	1 750	54.9
<b>Total</b>	<b>3 189</b>	<b>100.0</b>
Men		
	Number of deaths	%
1. Alcohol-related causes	1 202	16.4
2. Ischaemic heart disease	1 131	15.5
3. Accidents	865	11.8
4. Suicides	600	8.2
5. Lung cancer	449	6.1
6. Cerebrovascular diseases	283	3.9
Other causes of death	2 789	38.1
<b>Total</b>	<b>7 319</b>	<b>100.0</b>

Source: Causes of Death Statistics, Statistics Finland

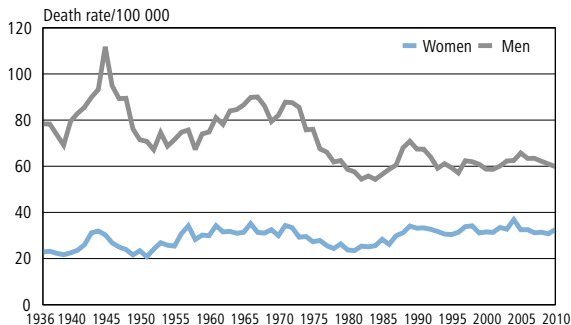
## 6 Health and exercise

### 6.13 Age-standardised mortality from alcohol-related diseases and accidental poisoning by alcohol in 1969 to 2010 per 100,000 persons of the mean population



Source: *Causes of Death Statistics, Statistics Finland*

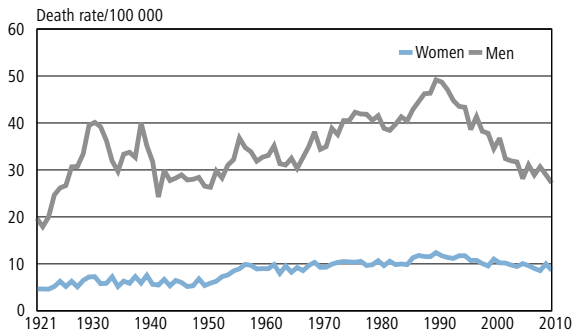
### 6.14 Accident mortality in 1936 to 2010 per 100,000 persons of the mean population



Source: *Causes of Death Statistics, Statistics Finland*

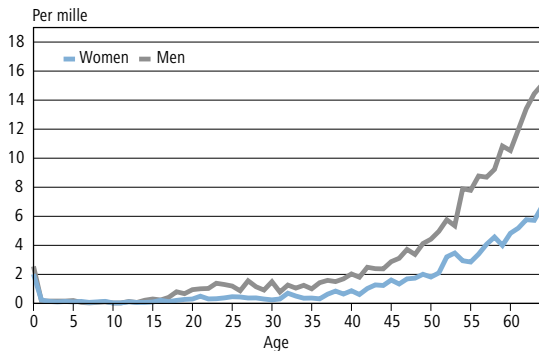


### 6.15 Suicide mortality in 1921 to 2010 per 100,000 persons of the mean population



Source: *Causes of Death Statistics, Statistics Finland*

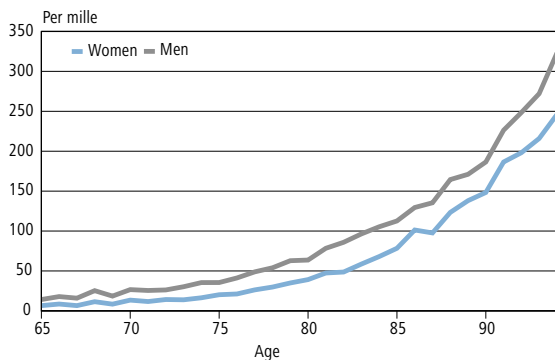
### 6.16 Mortality by age for persons aged 0–64 in 2010



Source: *Demographic Statistics, Statistics Finland*

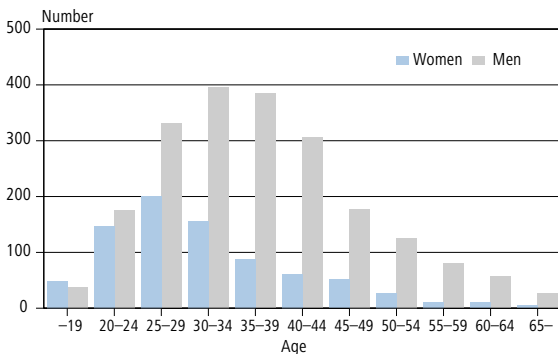
## 6 Health and exercise

### 6.17 Mortality by age for persons aged 65-94 2010



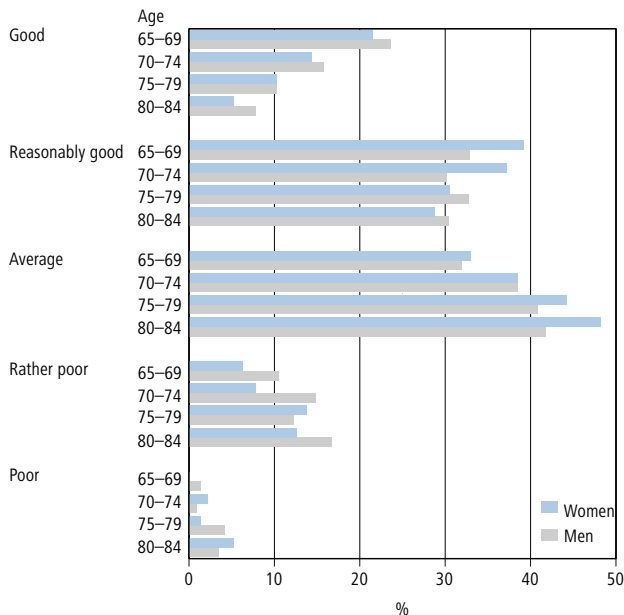
Source: *Demographic Statistics, Statistics Finland*

### 6.18 Number of HIV-infected people by age at the time contracting the virus; total number of cases up to 4 September 2011



Source: *National Institute for Health and Welfare*

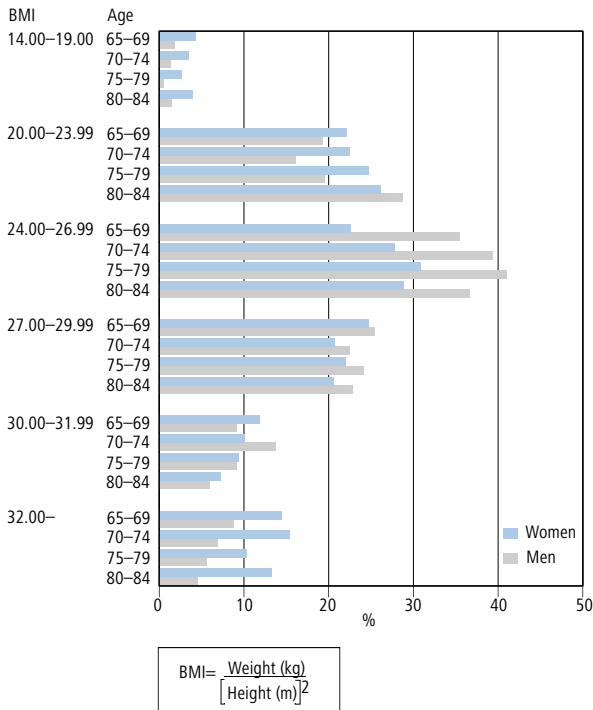
## 6.19 Self reported health of the elderly, by age, 2009



Source: Health Behaviour and Health among the Finnish Elderly, Spring 2009, National Institute for Health and Welfare

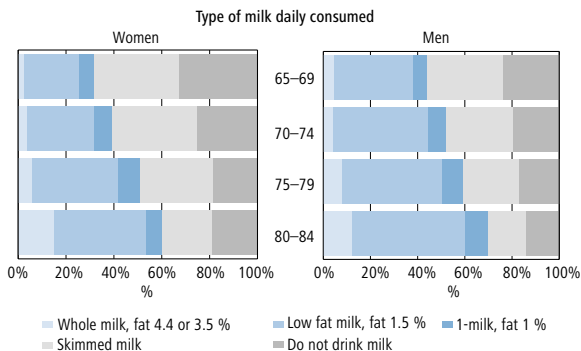
## 6 Health and exercise

### 6.20 Body mass index (BMI) of the elderly, by age, 2009

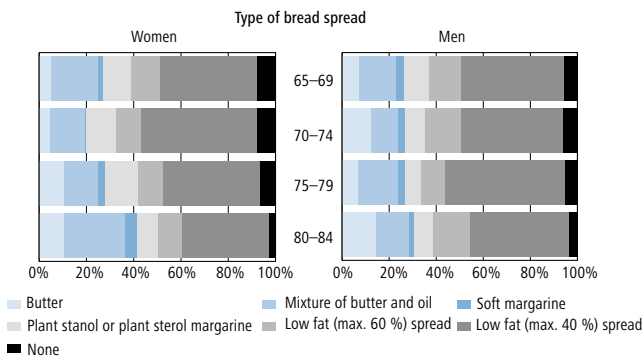


Source: Health Behaviour and Health among the Finnish Elderly, Spring 2009, National Institute for Health and Welfare

## 6.21 Eating habits of the elderly, by age, 2009



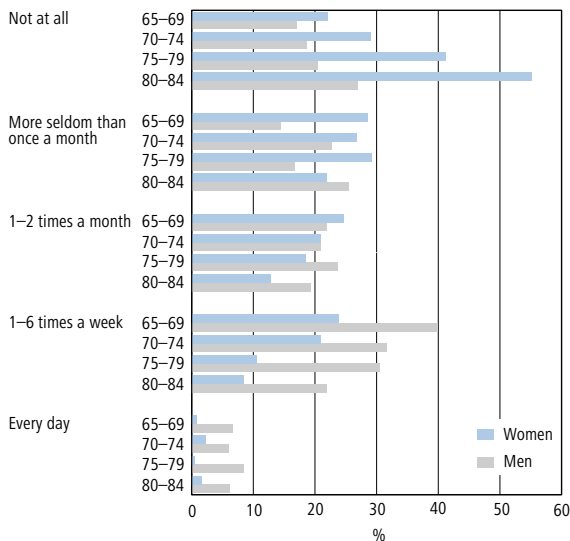
Source: *Health Behaviour and Health among the Finnish Elderly, Spring 2009*, National Institute for Health and Welfare



Source: *Health Behaviour and Health among the Finnish Elderly, Spring 2009*, National Institute for Health and Welfare

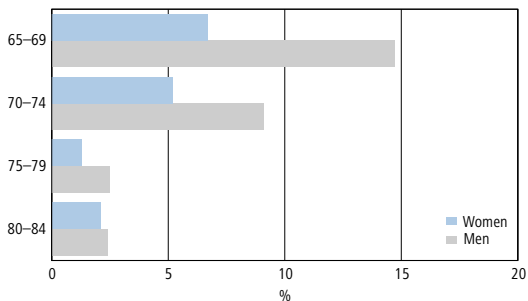
## 6 Health and exercise

### 6.22 Frequency of alcohol consumption among the elderly, by age, 2009



Source: *Health Behaviour and Health among the Finnish Elderly, Spring 2009*, National Institute for Health and Welfare

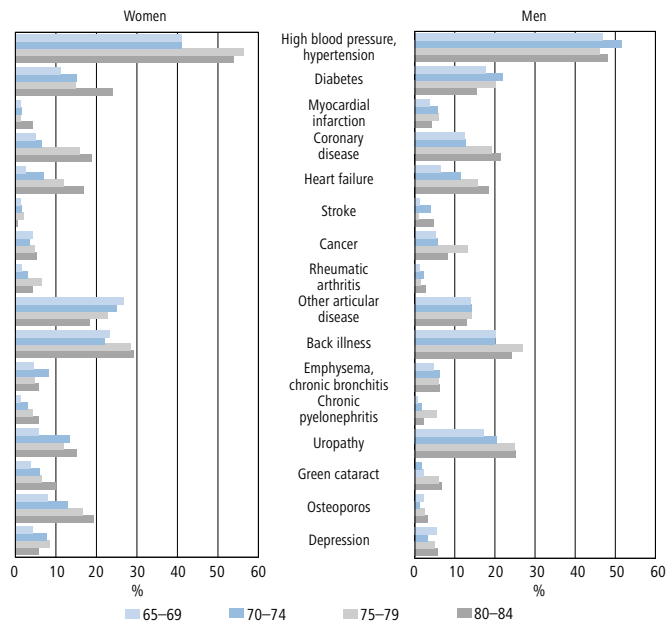
## 6.23 Daily smoking among the elderly, by age, 2009



Source: *Health Behaviour and Health among the Finnish Elderly, Spring 2009*, National Institute for Health and Welfare

## 6 Health and exercise

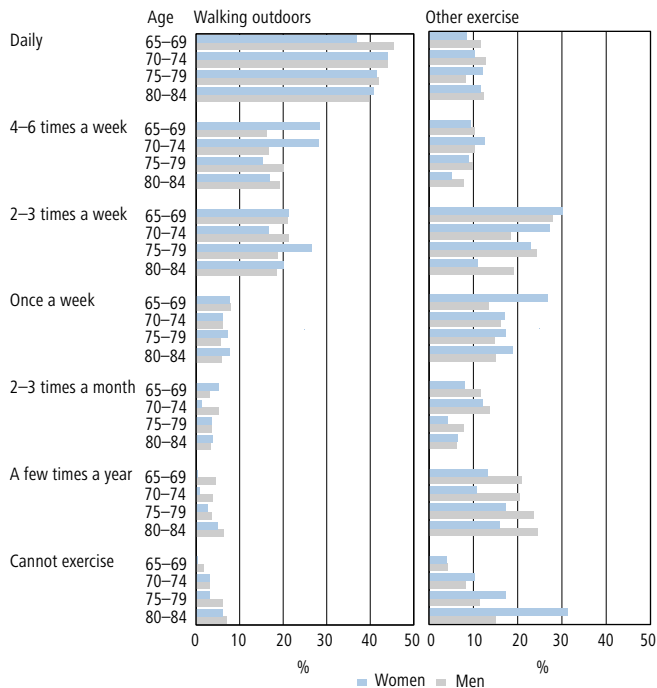
### 6.24 Incidence of illnesses among the elderly during the past year, by age, 2009



Source: Health Behaviour and Health among the Finnish Elderly, Spring 2009, National Institute for Health and Welfare



### 6.25 Physical exercise of the elderly, by age, 2009 For at least half an hour



Source: *Health Behaviour and Health among the Finnish Elderly, Spring 2009*, National Institute for Health and Welfare

## 7 Violence and crime

### 7.1 Crime suspects by type of offence 2010

Offences against the Penal Code	% Women	Men	Total number
<b>Total</b>	<b>17.5</b>	<b>82.5</b>	<b>302 053</b>
<b>Offences against property</b>	<b>22.2</b>	<b>77.8</b>	<b>127 016</b>
of which:			
– Theft	16.5	83.5	19 769
– Petty theft	31.1	68.9	46 648
– Robbery	12.1	87.9	1 135
– Aggravated robbery	13.3	86.7	195
– Damage to property	9.5	90.5	14 739
– Embezzlement	30.8	69.2	1 273
– Fraud, petty fraud	24.0	76.0	16 820
<b>Offences against life and health</b>	<b>15.6</b>	<b>84.4</b>	<b>31 646</b>
of which:			
– Manslaughter	8.8	91.3	80
– Murder	12.0	88.0	50
– Assault	13.5	86.5	19 427
<b>Sexual offences</b>	<b>2.8</b>	<b>97.2</b>	<b>1 798</b>
of which:			
– Child sexual abuse	3.8	96.2	789
– Rape	0.3	99.7	574
<b>Offences against public authority and public peace</b>	<b>16.3</b>	<b>83.7</b>	<b>13 906</b>
<b>Traffic offences</b>	<b>10.6</b>	<b>89.4</b>	<b>54 239</b>
of which:			
– Violating the speed limit	5.4	94.6	2 405
– Drunk driving	12.6	87.4	10 019
– Aggravated drunk driving	11.3	88.7	11 418
<b>Other offences against the penal code</b>	<b>15.8</b>	<b>84.2</b>	<b>73 448</b>
of which:			
– Drug offences	16.7	83.3	6 496
– Aggravated drug offences	11.6	88.4	1 156

Source: Justice Statistics, Statistics Finland

## 7.2 Children under 15 suspected of crime by type of offence 2010

Offences against the Penal Code	%		Total number
	Women	Men	
<b>Total</b>	<b>29.9</b>	<b>70.1</b>	<b>11 437</b>
<b>Offences against property</b>	<b>33.0</b>	<b>67.0</b>	<b>8 443</b>
of which:			
– Theft	15.8	84.2	707
– Petty theft	43.9	56.1	5 276
– Robbery	3.2	96.8	95
– Damage to property	13.7	86.3	1 804
– Fraud, petty fraud	35.6	64.4	160
<b>Offences against life and health</b>	<b>19.5</b>	<b>80.5</b>	<b>1 148</b>
of which:			
– Assault	19.9	80.1	828
<b>Sexual offences</b>	<b>0.0</b>	<b>100</b>	<b>24</b>
<b>Offences against public authority and public peace</b>	<b>34.8</b>	<b>65.2</b>	<b>158</b>
<b>Traffic offences</b>	<b>11.7</b>	<b>88.3</b>	<b>437</b>
<b>Other offences against the penal code</b>	<b>24.4</b>	<b>75.6</b>	<b>1 220</b>
of which:			
– Drug offences	8.3	91.7	12

Source: Justice Statistics. Statistics Finland

## 7 Violence and crime

### 7.3 Women's and men's victimisation since the age of 15 and during the last 12 months 2009/2010, % (all figures are calculated from the whole sample; women=1283, men=1918)

	After the 15th birthday		In the last 12 months	
	Women	Men	Women	Men
<b>Total</b>	<b>55.4</b>	<b>55.4</b>	<b>14.6</b>	<b>15.9</b>
Threats	32.5	40.1	6.7	9.7
Physical violence	48.8	49.0	10.0	11.7
Sexual violence	18.7	2.5	2.7	0.5
Other violence	18.2	10.5	3.3	1.9
<b>Perpetrator stranger</b>				
Total	30.0	42.3	7.0	9.7
Threats	11.8	30.5	3.2	6.4
Physical violence	20.9	35.4	3.6	6.3
Sexual violence	9.3	1.1	1.5	0.3
Other violence	6.6	6.9	1.4	1.6
<b>Perpetrator acquaintance</b>				
Total	23.7	23.6	5.4	5.4
Threats	13.2	16.1	2.0	3.0
Physical violence	18.1	18.1	3.5	4.2
Sexual violence	4.7	0.8	1.1	0.0
Other violence	4.3	2.6	1.4	0.2
<b>Perpetrator current partner</b>				
Total	12.4	11.5	3.2	4.1
Threat	5.8	3.3	0.9	1.7
Physical violence	10.5	10.5	2.7	3.3
Sexual violence	1.6	0.4	0.5	0.2
Other violence	2.3	0.9	0.2	0.1
<b>Perpetrator previous partner</b>				
Total	26.6	13.4	1.8	1.1
Threats	15.6	5.6	1.2	0.3
Physical violence	23.2	12.0	1.6	0.9
Sexual violence	8.0	1.0	0.1	0.1
Other violence	8.7	2.3	0.2	0.2

Source: Markku Heiskanen & Elina Ruuskanen: *Men's experiences of violence in Finland 2009. HEUNI 2010*  
The European Institute for Crime Prevention and Control, affiliated with the United Nations (HEUNI)

#### 7.4 Injuries and psychological consequences by perpetrator category 2009/2010, % of cases (most recent incident)

	Total		Stranger		Acquaintance	
	Women	Men	Women	Men	Women	Men
Physical injury	38.3	38.3	20.9	36.0	28.7	22.0
Psychological injury	59.6	26.5	52.0	26.3	49.9	23.4
Physical or psychological injury	69.4	51.2	57.8	48.0	62.7	38.8
Sample size	654	1020	357	771	264	394

	Current partner		Previous partner	
	Women	Men	Women	Men
Physical injury	27.3	11.9	36.6	25.0
Psychological injury	35.2	9.7	60.6	21.0
Physical or psychological injury	48.2	19.5	68.4	39.4
Sample size	138	203	300	221

Source: Markku Heiskanen & Elina Ruuskanen: *Men's experiences of violence in Finland 2009. HEUNI 2010*  
The European Institute for Crime Prevention and Control, affiliated with the United Nations (HEUNI)

## 7 Violence and crime

### 7.5 Number of violent incidents since the age of 15 years by perpetrator 2009/2010, %

	Stranger		Acquaintance	
	Women	Men	Women	Men
Once	46.5	31.7	39.2	32.5
2–3 times	31.9	42.8	35.0	36.0
4–10 times	12.7	15.8	12.6	16.5
Over 10 times	3.3	5.1	8.4	8.8
No information available	5.6	4.6	4.8	6.2
Sample size	357	769	264	393

	Current partner		Previous partner	
	Women	Men	Women	Men
Once	27.9	36.0	20.0	23.1
2–3 times	38.6	44.5	31.0	40.1
4–10 times	21.8	11.6	20.2	19.3
Over 10 times	5.1	3.7	23.0	14.2
No information available	6.6	4.2	5.8	3.3
Sample size	138	209	299	221

Source: Markku Heiskanen & Elina Ruuskanen: *Men's experiences of violence in Finland 2009. HEUNI 2010*  
The European Institute for Crime Prevention and Control, affiliated with the United Nations (HEUNI)

## 7.6 Sex of the perpetrator and the victim 2009/2010

Sex of the perpetrator	Perpetrator stranger		Perpetrator acquaintance	
	Women	Men	Women	Men
Woman	13.0	1.4	25.6	3.8
Man	83.2	95.3	69.9	93.5
Woman/man	2.1	2.1	3.7	1.4
No information available	1.7	1.2	0.8	1.3
Total	100	100	100	100
Sample size	297	572	191	260

Source: Markku Heiskanen & Elina Ruuskanen: *Men's experiences of violence in Finland 2009*. HEUNI 2010  
The European Institute for Crime Prevention and Control, affiliated with the United Nations (HEUNI)

## 7.7 Victims of stranger and acquaintance violence by perpetrator's age, most recent incident 2009/2010, %

Sex of the perpetrator	Perpetrator stranger		Perpetrator acquaintance	
	Women	Men	Women	Men
Under 16	2.7	2.7	5.1	8.1
16–24	28.1	42.8	30.7	39.6
25–44	45.7	45.8	36.8	39.0
45–	21.4	5.7	26.1	13.0
No information available	2.1	3.0	1.3	0.3
Total	100	100	100	100
Sample size	297	572	375	369

Source: Markku Heiskanen & Elina Ruuskanen: *Men's experiences of violence in Finland 2009*. HEUNI 2010  
The European Institute for Crime Prevention and Control, affiliated with the United Nations (HEUNI)

## 7 Violence and crime

### 7.8 Clients of shelters, mother and child homes, and homes for addicted mothers with children 2011

	Number			%	
	Adults	Women	Men	Women	Men
Sheltered homes	1 144	1 083	61	95	5
Mother and child homes	393	299	94	76	24
Homes for addicted mothers with children	98	78	20	80	20

	Number			%	
	Children	Girls	Boys	Girls	Boys
Sheltered homes	1 152	555	597	48	52
Mother and child homes	341	178	163	52	48
Homes for addicted mothers with children	78	38	40	49	51

The first mother and child home was established in 1942, and sheltered home activity started in 1978. The first mother and child home specialising in addiction problems was established in 1990.

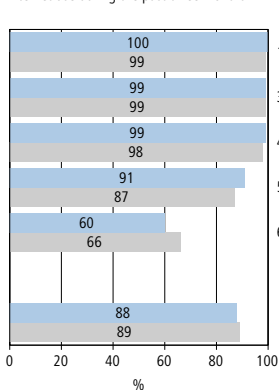
At the moment, the member organisations of The Federation of Mother and Child Homes and Shelters operate 10 mother and child homes and 14 shelter homes (operating in the same building in some locations) and 6 mother and child homes specialising in addiction problems.

Source: *The Federation of Mother and Child Homes and Shelters*

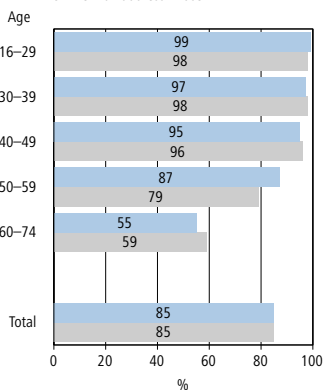
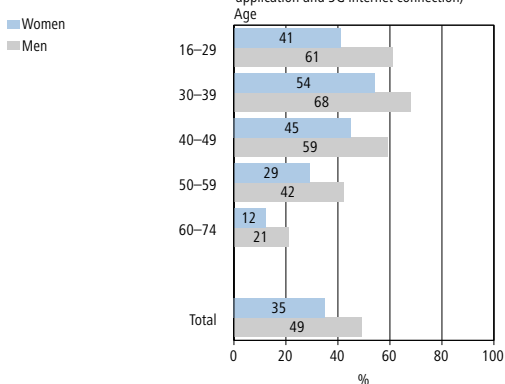


## 8.1 Use of internet, e-mail and smartphone 2011

Internet use during the past three months



Own e-mail address in use

Smartphone in own use  
(Smartphone = mobile phone with wider keyboard than in conventional mobile phone, commercial application and 3G internet connection)

Source: Survey on ICT usage in households and by individuals, spring 2011, Statistics Finland

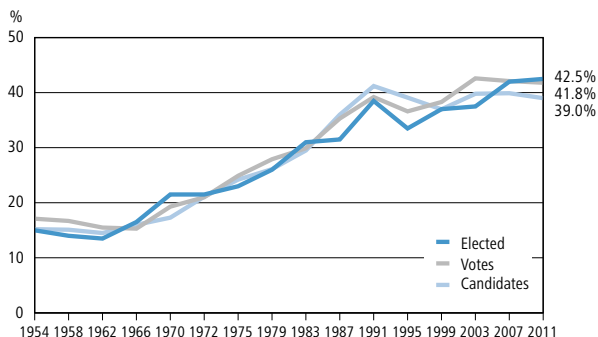
## 9 Power and decision making

### 9.1 Parliamentary election in Finland 2011

	Number			%	
	Total	Women	Men	Women	Men
Candidates	2315	903	1412	39.0	61.0
Elected	200	85	115	42.5	57.5

Source: *Election Statistics, Statistics Finland*

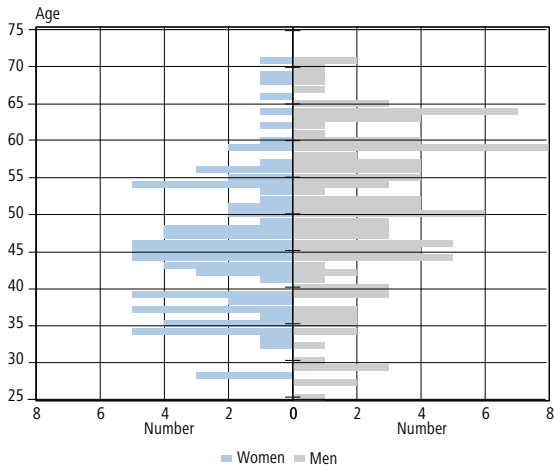
### 9.2 Percentage of female candidates, votes cast for women and women elected in parliamentary elections 1954–2011



The voting turnout in the parliamentary election 2011 was 67.7 % for women and 67.0 % for men.

Source: *Election Statistics, Statistics Finland*

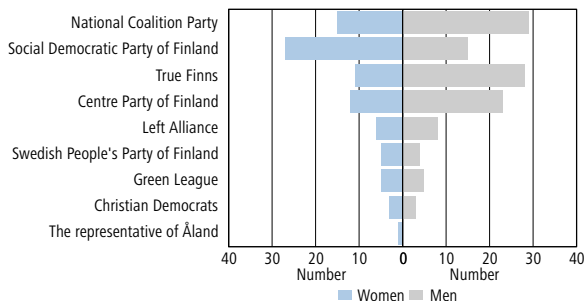
## 9.3 Members of Parliament 2011 (age by the end of the year)



The average age of the Members of Parliament is 46 years for women and 51 years for men.

Source: Finnish Parliament

## 9.4 Members of Parliament by political party 2011



Source: Finnish Parliament

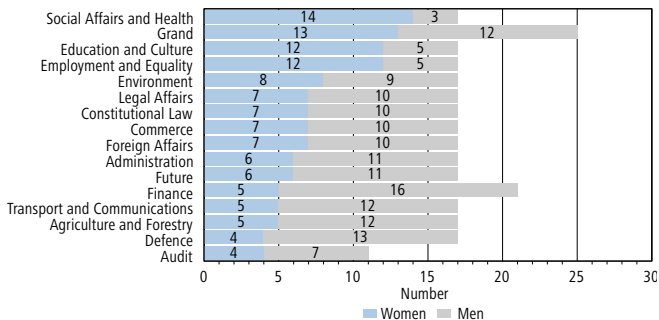
## 9 Power and decision making

### 9.5 Chairpersons and Vice Chairpersons of Parliamentary Groups, 2011

Parliamentary group	Total	Total		Chairperson		Vice Chairpersons	
		Women	Men	Women	Men	Women	Men
<b>Total</b>	<b>25</b>	<b>13</b>	<b>12</b>	<b>3</b>	<b>5</b>	<b>10</b>	<b>7</b>
%		52.0	48.0	37.5	62.5	58.8	41.2
National Coalition Party Parliamentary Group	4	2	2		1	2	1
Social Democratic Parliamentary Group	3	2	1		1	2	
True Finns Party Parliamentary Group	3	1	2	1			2
Centre Party Parliamentary Group	3	1	2		1	1	1
Left Alliance Parliamentary Group	3	2	1	1		1	1
Green Parliamentary Group	3	2	1		1	2	
Swedish Parliamentary Group	3	2	1	1		1	1
Christian Democratic Parliamentary Group	3	1	2		1	1	1

Source: Finnish Parliament

### 9.6 Parliamentary Committees 2011 (July)



The Grand Committee has 25 members, the Finance Committee 21, the Audit Committee 11 and others 17 members each. The chairs of the Committees are 6 women and 10 men. Vice chairs are 9 women and 8 men (The Grand Committee has 2 vice chairs).

Source: Finnish Parliament

## 9.7 Composition of the Cabinet of Prime Minister Jyrki Katainen 2011

	Women	Men
Prime Minister		1
Minister of Finance	1	
Minister of Foreign Affairs		1
Minister of European Affairs and Foreign Trade		1
Minister for International Development	1	
Minister of Justice	1	
Minister of the Interior	1	
Minister of Defence		1
Minister of Public Administration and Local Government	1	
Minister of Education		1
Minister of Culture and Sport		1
Minister of Agriculture and Forestry		1
Minister of Transport	1	
Minister of Economic Affairs		1
Minister of Labour		1
Minister of Health and Social Services	1	
Minister of Social Affairs and Health	1	
Minister of the Environment		1
Minister of Housing and Communications	1	
<b>Total</b>	<b>9</b>	<b>10</b>
<b>%</b>	<b>47</b>	<b>53</b>

Source: Finnish Government

## 9 Power and decision making

### 9.8 Cabinet Committees and Ministerial working groups 2011

	Total	Women Total	Men Total	Women %	Men %
<b>Statutory Cabinet Committees</b>					
The Cabinet Committee on Foreign and Security Policy	8	2	6	25.0	75.0
The Cabinet Committee on European Union Affairs	12	7	5	58.3	41.7
The Cabinet Finance Committee	12	6	6	50.0	50.0
The Cabinet Committee on Economic Policy	8	2	6	25.0	75.0
<b>Ministerial working groups</b>					
Ministerial working group on public administration and regional development	8	5	3	62.5	37.5
Ministerial working group on educational policy	8	3	5	37.5	62.5
Ministerial working group on social and health policy	8	6	2	75.0	25.0
Ministerial working group on energy and climate policy	8	4	4	50.0	50.0
Ministerial working group on basic social services	10	8	2	80.0	20.0
Ministerial working group on transport and communications policy	8	3	5	37.5	62.5
Ministerial working group on Russian affairs	9	3	6	33.3	66.7
Ministerial working group on the fight against the shadow economy	8	6	2	75.0	25.0
Ministerial working group on internal security	8	5	3	62.5	37.5
Ministerial working group on integration and migration policy	8	4	4	50.0	50.0

Source: Prime Minister's Office

(Jyrki Katainen's Government does not have ministerial working groups for the policy programmes.)

## 9.9 Members of current projects\*) set up by the Prime Minister's Office and the Ministries 2011

Ministry	Members		%	
	Women	Men	Women	Men
Ministry of Trade and Industry	2	6	25	75
Ministry of Transport and Communications	121	221	35	65
Ministry of Agriculture and Forestry	595	734	45	55
Ministry of Justice	287	312	48	52
Ministry of Education and Culture	331	272	55	45
Ministry of Education	588	619	49	51
Ministry of Defence	66	177	27	73
Ministry of the Interior	542	790	41	59
Ministry of Social Affairs and Health	925	968	49	51
Ministry of Employment and the Economy	1094	1172	48	52
Ministry of Foreign Affairs	8	7	53	47
Prime Minister's Office	131	151	46	54
Ministry of Finance	893	1083	45	55
Ministry of the Environment	586	718	45	55
<b>Total</b>	<b>6 169</b>	<b>7 230</b>	<b>46</b>	<b>54</b>

Ministry	Deputy members		%	
	Women	Men	Women	Men
Ministry of Trade and Industry	–	–	–	–
Ministry of Transport and Communications	35	51	41	59
Ministry of Agriculture and Forestry	216	239	47	53
Ministry of Justice	34	32	52	48
Ministry of Education and Culture	32	25	56	44
Ministry of Education	107	80	57	43
Ministry of Defence	7	15	32	68
Ministry of the Interior	208	211	50	50
Ministry of Social Affairs and Health	596	496	55	45
Ministry of Employment and the Economy	281	257	52	48
Ministry of Foreign Affairs	7	6	54	46
Prime Minister's Office	29	25	54	46
Ministry of Finance	154	195	44	56
Ministry of the Environment	150	166	47	53
<b>Total</b>	<b>1 856</b>	<b>1 798</b>	<b>51</b>	<b>49</b>

\*) Governing bodies, delegations, committees, commissions, advisory boards, boards, working groups, etc.

Source: Prime Minister's Office

## 9 Power and decision making

### 9.10 Highest ministerial offices 2011

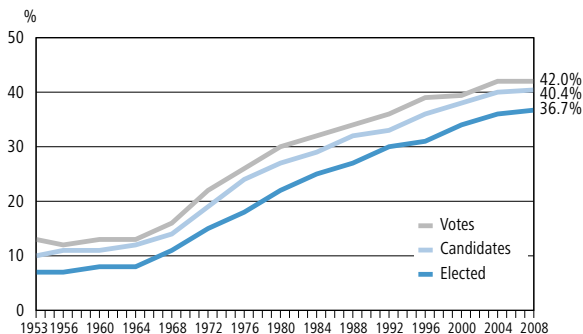
	Total	Women Total	Men Total	Women %	Men %
Secretaries General and Secretaries of State	15	4	11	27	73
Under-Secretaries of State	9	1	8	11	89
Heads of Departments	50	14	36	28	72

Secretary General of the Office of the President of the Republic of Finland is a woman.

Secretary General of the Supreme Court is a woman.

Source: Prime Minister's Office, Ministries

### 9.11 Percentage of female candidates, votes cast for women, and women elected in municipal elections 1953–2008



Source: Election Statistics, Statistics Finland



### 9.12 Managers in regional administration

#### Municipal managers 2010

	Number		%		Men
	Total	Women	Men	Women	
Rural municipalities	223	43	180	19	81
Urban municipalities	107	11	96	10	90
<b>Total</b>	<b>330</b>	<b>54</b>	<b>276</b>	<b>16</b>	<b>84</b>

Source: *Statistics on salaries in the municipal sector, Statistics Finland*

#### Chairpersons of municipal executive boards and municipal councils 2009–2012

	%	
	Women	Men
<b>Executive boards</b>		
Chairpersons	21	79
Vice Chairpersons	35	65
<b>Municipal councils</b>		
Chairpersons	27	73
Vice Chairpersons	25	75

Source: *The Association of Finnish Local and Regional Authorities*

#### Provinces

	Number		%		Men
	Total	Women	Men	Women	
<b>Governors</b>					
2000	6	3	3	50	50
2009	6	2	4	33	67
<b>Chief directors of Regional State Administrative Agencies</b>					
2011	6	3	3	50	50

Source: *State Provincial Offices, Regional State Administrative Agencies*

## 9 Power and decision making

### 9.12 Managers in regional administration (cont.)

Regions incl. Åland

	Number			%	
	Total	Women	Men	Women	Men
Directors of Regional Councils					
2003	20	1	19	5	95
2005	20	1	19	5	95
2009	20	2	18	10	90
2011	19	2	17	11	89

Source: Finnish Regional Councils

#### Regional governments 2009

	Number			%	
	Total	Women	Men	Women	Men
Members	246	114	132	46	54
Deputy members	245	113	132	46	54

#### Regional councils 2009

	Number			%	
	Total	Women	Men	Women	Men
Members	1 106	485	621	44	56
Vice members	1 045	480	565	46	54

Source: The Association of Finnish Local and Regional Authorities

#### Other local level management

	Number			%	
	Total	Women	Men	Women	Men
Directors of Employment and Economic Development Centres and Centres for Economic Development, Transport and the Environment <sup>1</sup>					
2000	15	4	11	27	73
2003	15	3	12	20	80
2005	15	3	12	20	80
2007	15	3	12	20	80
2009	15	4	11	27	73
2011	15	4	11	27	73

Source: Employment and Economic Development Centres and Centres for Economic Development, Transport and the Environment

## 9.13 Central employers' organisation (Confederation of Finnish Industries EK) 2011

	Number			%	
	Total	Women	Men	Women	Men
Presiding officers	6	0	6	0	100
Board members	14	2	12	14	86
Board of Directors Members	130	11	119	8	92

Source: Confederation of Finnish Industries EK

## 9.14 Central employee organisations 2011

	Number			%	
	Total	Women	Men	Women	Men
Presiding Officers	16	5	11	31.3	68.8
Board Members	68	17	51	25.0	75.0
Members of councils <sup>1)</sup>	178	81	98	45.5	55.1
Members	2 206 368	1 197 307	1 009 061	54.3	45.7

1) Akava does not have a council

Source: Central employee organisations

SAK (Central Organisation of Finnish Trade Unions)

STTK (Finnish Confederation of Salaried Employees)

Akava (Confederation of Unions for Academic Professionals in Finland)

## 9.15 Polytechnics and universities 2011

	Number			%	
	Total	Women	Men	Women	Men
Rectors of polytechnics	27	7	20	26	74
Rectors of universities	17	5	12	29	71
Professors (2009*)	2 427	592	1 835	24	76

\*) Employment Statistics, Statistics Finland

Source: Polytechnics and universities

## 9 Power and decision making

---

### 9.16 The Academy of Finland 2011

---

	Number			%	
	Total	Women	Men	Women	Men
<b>Scientific Research Councils</b>					
Chairpersons	4	2	2	50	50
Members	40	20	20	50	50
Academy professors (from Jan 1st, 2012)	41	9	32	22	78

---

*Source: Academy of Finland*

## 9.17 Political parties (August 2011)

	Chairperson		Vice chairpersons	
	Women	Men	Women	Men
National Coalition Party		1	2	1
Finnish Social Democratic Party	1		2	1
True Finns Party		1	1	2
Centre Party of Finland	1		1	2
Left Alliance		1	1	1
Green League		1	1	2
Swedish People's Party <sup>2</sup>		1	2	1
Christian Democrats of Finland	1		1	2
	Party secretary		Other members of executive boards	
	Women	Men	Women	Men
National Coalition Party	1		6	12
Finnish Social Democratic Party		1	6	7
True Finns Party		1	4	4
Centre Party of Finland		1	10	22
Left Alliance	1		5	4
Green League		1	5	3
Swedish People's Party <sup>2</sup>		1	15	10
Christian Democrats of Finland		1	5	13
	Chairs and vice chairs of party councils (or similar)		Other members of party councils (or similar) <sup>1</sup>	
	Women	Men	Women	Men
National Coalition Party	2x	1	31	27
Finnish Social Democratic Party	2	1x	26	32
True Finns Party	–	–	42	19
Centre Party of Finland	2	2x	62	63
Left Alliance	2	1x	21	41
Green League	1x	2	21	16
Swedish People's Party <sup>2</sup>	–	–	–	–
Christian Democrats of Finland	1	1x	29	29

x=chairperson

1) True Finns: including chairpersons of regional organisations: 1 woman and 15 men

2) Swedish People's Party has no party council

Source: *Finnish Political Parties*

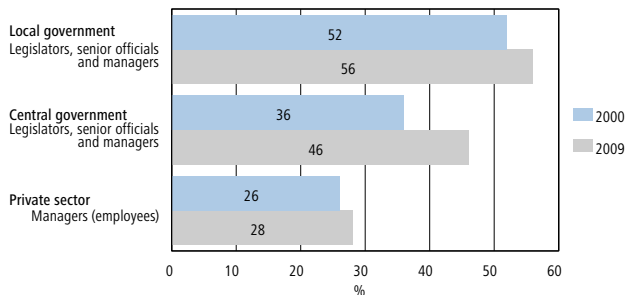
## 9 Power and decision making

### 9.18 The judicial system 2010

Court instance	Number		%		
	Total	Women	Men	Women	Men
<b>Supreme court</b>					
President	1	1	0	100	0
Justice of the Supreme Court	17	4	13	24	76
<b>Supreme Administrative Court</b>					
President	1	0	1	0	100
Justice, Supreme Administrative Court	20	8	12	40	60
<b>Courts of Appeal (6)</b>					
President	6	0	6	0	100
Chief Judges of Courts of Appeal	20	3	17	15	85
Justice, Court of Appeal	137	65	72	47	53
<b>District Courts (27)</b>					
Chief Judges	38	9	29	24	76
Judges	367	154	213	42	58
<b>Administrative Courts (8)</b>					
Chief Justice	8	4	4	50	50
Judges of Administrative Court	150	85	65	57	43
<b>Special Courts</b>					
<b>Insurance Court</b>					
Chief Justice	1	0	1	0	100
Chief Judges	3	0	3	0	100
Chief Secretary	1	0	1	0	100
Judges of Insurance Court	27	14	13	52	48
<b>Labour Court</b>					
President	1	0	1	0	100
Councillor of Labour Court	1	0	1	0	100
Members	14	4	10	29	71
Labour Court Referendaises	3	2	1	67	33
<b>Market Court</b>					
Chief Judge	1	0	1	0	100
Market Court Judge	4	2	2	50	50
Market Court Refendaises	4	2	2	50	50
Expert Members	24	9	15	38	63

Source: Suomen valtiokalenteri (Finland's State Calendar) 2010

### 9.19 Proportion of women of the managers by employer sector 2000 and 2009



The proportion of women among employees in managerial positions was 31 per cent in 2000 and 33 per cent in 2009.

Source: *Employment Statistics, Statistics Finland*

### 9.20 Boards of directors of quoted and state-owned companies 2008–2011

	Members of the boards, percentage					
	2008		2009			
	Women	Men	Women	Men		
Quoted companies	12.1	87.9	100	14.5	85.5	100
State-owned companies	33.0	67.0	100	33.9	66.1	100

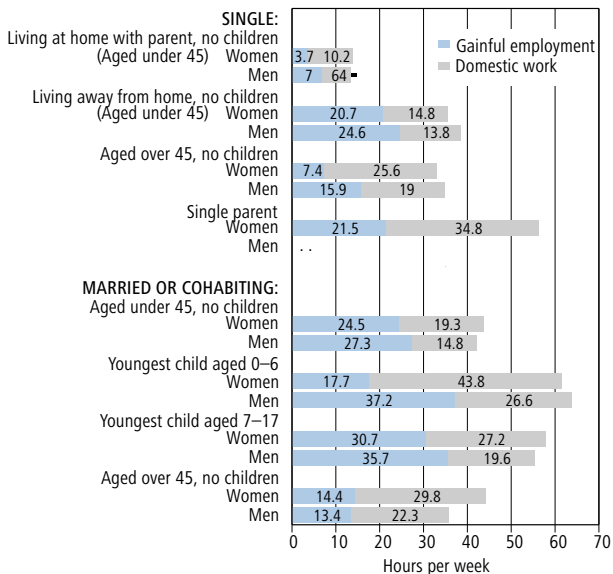
  

	Members of the boards, percentage					
	2010		2011			Yhteensä
	Women	Men	Women	Men		
Quoted companies	16.6	83.4	100	18.7	81.3	100
State-owned companies	34.7	65.3	100	38.4	61.6	100

Source: *Quoted and state-owned companies*

## 10 Time use

### 10.1 Total work load of women and men by stage of family cycle 2009–2010

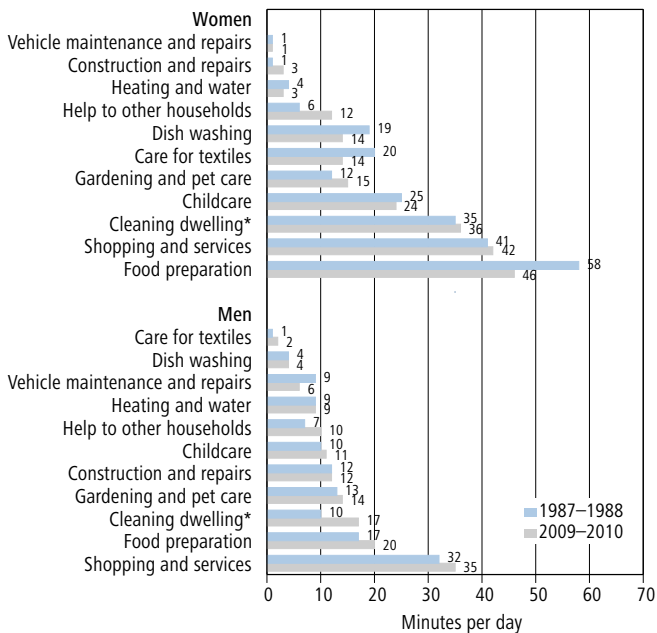


.. Data too uncertain to be reported

Source: Time Use Survey, Statistics Finland



## 10.2 Time used for different types of domestic work in 1987–1988 and 2009–2010

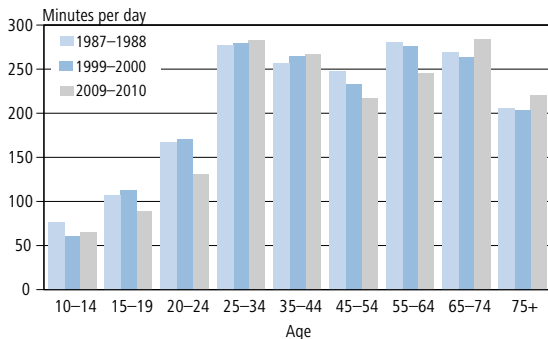


\* The data from 1987-1988 are not fully comparable.

Source: Time Use Survey, Statistics Finland

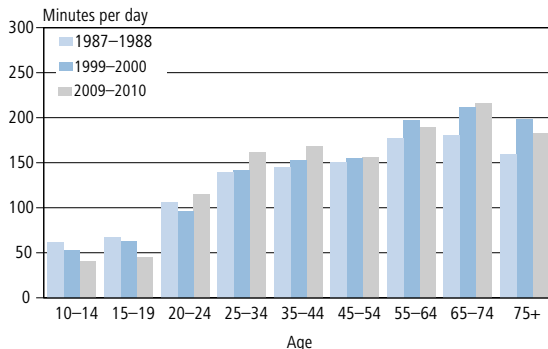
## 10 Time use

### 10.3 Time used by women for domestic work by age



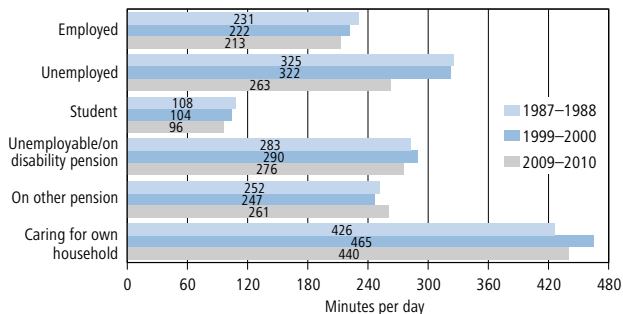
Source: Time Use Survey, Statistics Finland

### 10.4 Time used by men for domestic work by age



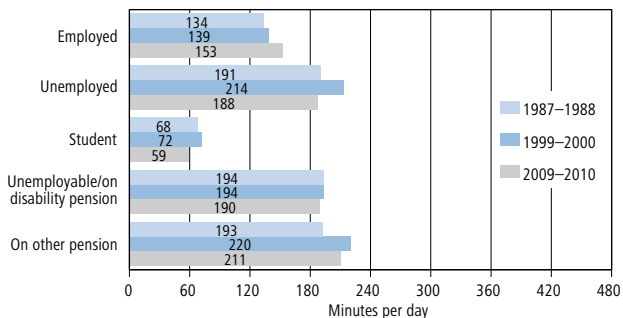
Source: Time Use Survey, Statistics Finland

## 10.5 Time used by women for domestic work by main activity



Source: Time Use Survey, Statistics Finland

## 10.6 Time used by men for domestic work by main activity



Source: Time Use Survey, Statistics Finland

## 10 Time use

### 10.7 Share of married or cohabiting women of total time used for domestic work in family

	%		
	1987–1988	1999–2000	2009–2010
Aged under 45, no children	60	59	57
Youngest child aged 0–6	69	67	62
Youngest child aged 7–17	63	60	58
Aged over 45, no children	62	58	57

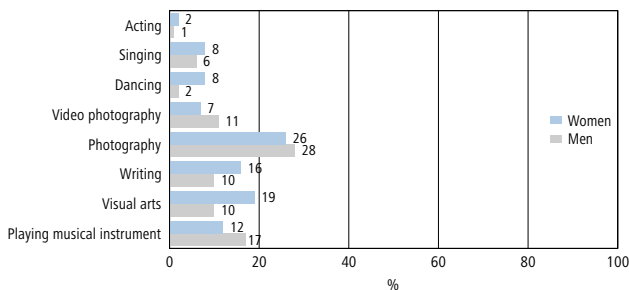
Source: Time use survey, Statistics Finland

### 10.8 Time used by men as a proportion of that used by women for domestic work by socio-economic group

	%		
	1987–1988	1999–2000	2009–2010
Farmers on own account	37	40	.
Other own account workers	50	60	58
Upper-level employees	66	66	80
Lower-level employees	65	64	71
Workers	59	64	71
All employed, total	58	63	72

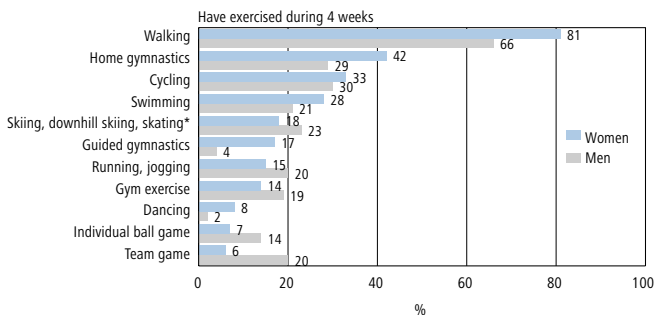
Source: Time use survey, Statistics Finland

## 10.9 Cultural activities 2009



Source: Time Use Survey, Statistics Finland

## 10.10 Physical exercise 2009

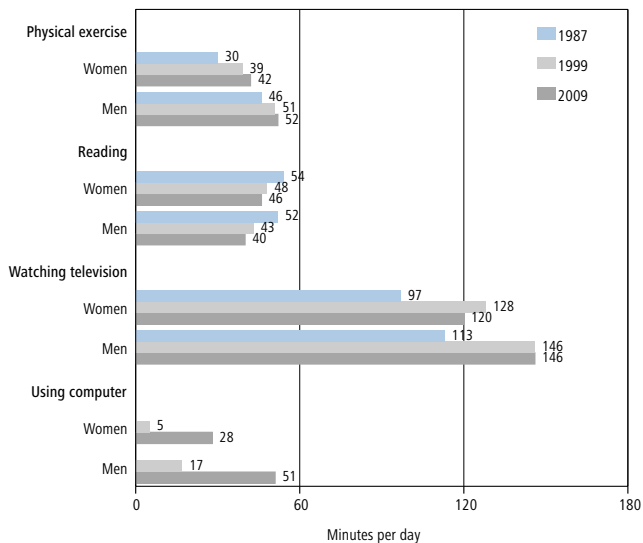


\* November–April

Source: Time Use Survey, Statistics Finland

## 10 Time use

### 10.11 Time used for exercise, reading, full-time television watching and using computer



Source: Time Use Survey, Statistics Finland



*Information Service, Statistics Finland*  
tel. +358 9 1734 2220  
[www.stat.fi](http://www.stat.fi)

ISSN 1798-176X (pdf)  
ISBN 978-952-244-426-4 (pdf)

*Publication orders, Edita Publishing Oy*  
tel. +358 20 450 05  
[www.editapublishing.fi](http://www.editapublishing.fi)