

# Tilastotiedotus Statistisk rapport

Tilastotarkisto  
Statistikarkivet

ISSN 0355-2330

Tilastokeskus  
Statistikcentralen  
Central Statistical Office of Finland

# 1986

Tiedustelut - Förfrågningar

Päiväys - Datum

Sarja ja nro - Serie och nr

H. Pihlaja  
L. Pulli  
(90) 17 341

22.8.1986

TE 1986:9

TEOLLISUUS  
INDUSTRI

TTE00A - 001

ARKISTO

A 2

TEOLLISUUSTUOTANNON KUUKAUSITTAINEN  
VOLYMI-INDEKSI 1984, 1985 JA  
1986 TAMMIKUU - KESÄKUUN (1980=100)

INDUSTRIPRODUKTIONS VOLYMINDEKSI  
MÅNADSVIS 1984, 1985 OCH  
1986 JANUARI - JUNI (1980=100)

MONTHLY VOLUME INDEX OF INDUSTRIAL  
PRODUCTION 1984, 1985 AND  
1986 JANUARY - JUNE (1980=100)

JULKAISUJEN POSTIMYYNTI:  
Tilastokeskus, PL 504, 00101 Helsinki  
Puh. (90) 1734535

Valtion painatuskeskus, PL 516, 00101 Helsinki  
Puh. (90) 539011/tilaukset

KÄTEISMYYNTI: Valtion painatuskeskuksen kirjakaupat  
Helsingissä Annankatu 44 ja Eteläesplanadi 4

POSTFÖRSÄLJNING:  
Statistikcentralen PB 504, 00101 Helsingfors  
Tel. (90) 1734535

Statens tryckericentral, PB 516, 00101 Helsingfors  
Tel. +3580539011/beställningar

KONTANTFÖRSÄLJNING: Statens tryckericentralens bokhandlar i  
Helsingfors Annegatan 44 och Södra esplanaden 4

MAIL ORDERS  
Central Statistical Office of Finland  
P.O.B. 504, SF-00101 Helsinki  
TEL. (90) 1734535

Government Printing Centre P.O.B. 516, SF-00101 Helsinki  
Tel. +3580539011/orders

CASH SALES

Government Printing Centre bookshops in Helsinki located  
at Annankatu 44 and Eteläesplanadi 4



TEOLLISUUSTUOTANNON KUUKAUSITTAINEN VOLYYMI-INDEKSI 1984, 1985 JA 1986  
TAMMI - KESÄKUU (1980=100)

Oheisena julkaistaan vuosien 1984 ja 1985 indeksisarjat vuositilaston tietojen pohjalta tasokorjattuina. Vuoden 1986 kuukausi-indeksit on myös korjattu 1985 tasoon. Samalla on myös alkuvuoden indeksejä korjattu perustietojen tarkentumisen johdosta. Indeksisarjojen sisäistä jakaumaa on myös korjattu painorakenteen uudistamisen johdosta.

Taulussa 1 kuvataan teollisuustuotannon kuukausittaiset volyyymi-indeksit sekä indeksien muutosprosentit verrattuna edellisen vuoden vastaaviin kuukausiin. Taulussa 2 kuvataan teollisuustuotannon volyyymi-indeksit työpäivää kohti. Tauluissa oleva lyhenne ULT (ultimo) tarkoittaa teollisuustuotannon kuukausittaisten volyyymi-indeksien keskiarvoa laskettuna vuoden alusta lähtien.

**Teollisuustuotanto nousi kesäkuussa 2,8 %, työpäiväkorjattu laski 0,2 %**

Teollisuustuotannon volyyymi-indeksi (1980=100) oli kesäkuussa 118 eli 2,8 % suurempi kuin vuoden 1985 indeksi. Vuonna 1986 oli kesäkuussa yksi työpäivä enemmän kuin vuonna 1985. Työpäiväkorjattu kesäkuun indeksi laski 0,2 % edellisen vuoden kesäkuun indeksiin verrattuna.

Metalliteollisuuden tuotannon työpäiväkorjattu indeksi laski kesäkuussa 2,5 %. Laskua tapahtui eniten koneiden valmistuksessa, -12,8 %. Sähkötekni-  
nisten tuotteiden valmistuksessa tuotannon kasvu jatkui edelleen voimak-  
kaana, 15,1 %.

Puu- ja paperiteollisuudessa tuotanto laski 3,9 %. Myöskin massan ja pa-  
perin valmistuksessa indeksi kääntyi laskuun, -4,6 %, osoitettuaan huhti-  
ja toukokuussa hienoista tuotannon kasvua.

Eri toimialoista kasvu oli suurin muovituotteiden valmistuksessa ja muus-  
sa kaivannaistoiminnassa, missä tuotannon voimakas kasvu johtui turpeen-  
nostosta.

Öljyn jalostuksen lasku jatkui johtuen vuosikorjauseisokeista.

Tuotannon volyyymi-indeksit ja niiden %-muutokset edellisen vuoden kesä-  
kuuhun verrattuna tavaroiden käyttötarkoituksen mukaan:

			työpäiväkorjattu
Investointitavarat	151	-1,6 %	-6,1 %
Kulutushyödykkeet	105	1,9 %	-1,5 %
Muut tuotantohyödykkeet	119	4,2 %	1,7 %

Tehdasteollisuuden erikoisindeksit ja niiden %-muutokset edellisen vuoden  
kesäkuuhun verrattuna:

			työpäiväkorjattu
Puu- ja paperiteollisuus	100	-2,3 %	-3,9 %
Metalliteollisuus	140	1,9 %	-2,5 %
Muu teollisuus	106	2,7 %	-0,7 %

Vuonna 1986 oli kuuden kuukauden tuotanto 1,8 % (työpäiväkorjattu 1,7 %) pienempi kuin vastaavana aikana 1985.

## INDUSTRIPRODUKTIONENS VOLYMINDEX, MÅNADSVIS 1984, 1985 OCH 1986 JANUARI-JUNI (1980=100)

Indexserierna för år 1984 och 1985 publiceras här. Indexerna har nivåkorrigerats på basen av årsstatistikens uppgifter. Månadsindexerna för 1986 har även uppräknats till 1985 års nivå. Samtidigt har uppgifterna för början av året korrigerats efter en precisering av basuppgifterna. Indexseriernas indre fördelning har även korrigerats till följd av den reviderade viktstrukturen.

I tabell 1 ges industriproduktionens volymindexar samt indexarnas procentuella förändringar från motsvarande månader föregående år. I tabell 2 ges industriproduktionens volymindex per arbetsdag. Förkortningen ULT (ultimo) i tabellerna betyder medelvärdet av de månatliga indexerna beräknade från årets början.

Industriproduktionen steg i juni med 2,8 %, volymindex per arbetsdag sjönk med 0,2 %

Statistikcentralens volymindex för industriproduktionen (1980=100) var i juni 118, vilket var 2,8 % större än motsvarande index för år 1985. I juni 1986 var antalet arbetsdagar en dag flere än i juni 1985. Volymindexen per arbetsdag sjönk med 0,2 % i juni jämfört med indexen för juni i fjol.

Produktionen inom metallindustrin, korrigerad enligt arbetsdag, sjönk med 2,5 % i juni. Nedgången var störst inom maskintillverkningen, -12,8 %. Inom tillverkningen av elektriska produkter fortsatte ökningen alltså kraftigt, 15,1 %.

Produktionen inom trä- och pappersindustrin sjönk i juni med 3,9 %. Också inom massa- och papperstillverkningen var indexen nedgående, -4,6 %. I april och maj hade indexen visat en liten produktionsökning. Inom övriga näringsgrenar var tillväxten störst inom plastvarutillverkning och annan brytning av mineraliska produkter. Den stora produktionsökningen berodde på torvupptagning.

Den kraftiga nedgången inom oljeraffineringen fortsatte på grund av produktionsstopp under årsrevisionen.

Produktionens volymindexar jämte %-ändringar jämfört med juni förra året efter varornas användningssyfte:

			volymindex per arbetsdag
Investeringsvaror	151	-1,6 %	-6,1 %
Konsumtionsvaror	105	1,9 %	-1,5 %
Övriga produktionsvaror	119	4,2 %	1,7 %

Fabriksindustrins specialindexar jämte %-ändringar jämfört med juni i fjol:

			volymindex per arbetsdag
Trä- och pappersindustrin	100	-2,3 %	-3,9 %
Metallindustrin	140	1,9 %	-2,5 %
Övrig industri	106	2,7 %	-0,7 %

Under år 1986 var produktionen under de sex första månaderna 1,8 % (volymindex per arbetsdag 1,7 %) mindre än under motsvarande period 1985.

ENGLISH SUMMARY

THE MONTHLY VOLUME INDEX OF INDUSTRIAL PRODUCTION FOR 1984, 1985 AND JANUARY - JUNE 1986 (1980=100)

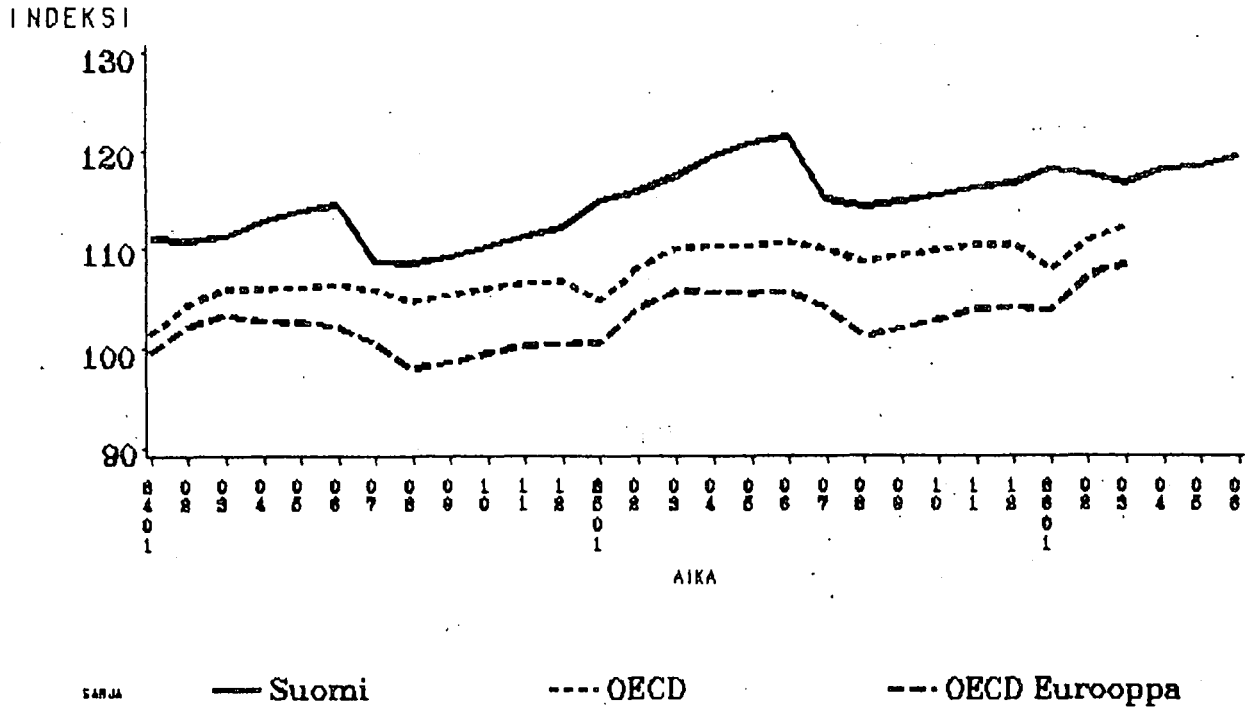
The index series for 1984 and 1985 are published here as revised on the basis of the annual industrial statistics. The monthly indices for 1986 have also been revised to the level of the preceding year. At the same time the indices for the beginning of the year have been corrected to reflect adjustments in the basic data. The internal distribution of the index series has also been corrected to reflect the revised weight structure.

Table 1 shows the monthly volume indices of industrial production and their per cent change from the corresponding months in the preceding year. Table 2 shows the indices of industrial production per working day. The abbreviation ULT in the tables refers to the mean of the monthly volume indices as calculated from the beginning of the year.

Teollisuustuotannon volyymi-indeksin toimialoittaiset painot vuosina 1980 ja 1975  
 Näringsgrensvisa vikter för industriproduktions volymindex år 1980 och 1975  
 The weights of the volume index of industrial production in 1980 and 1975 by industry

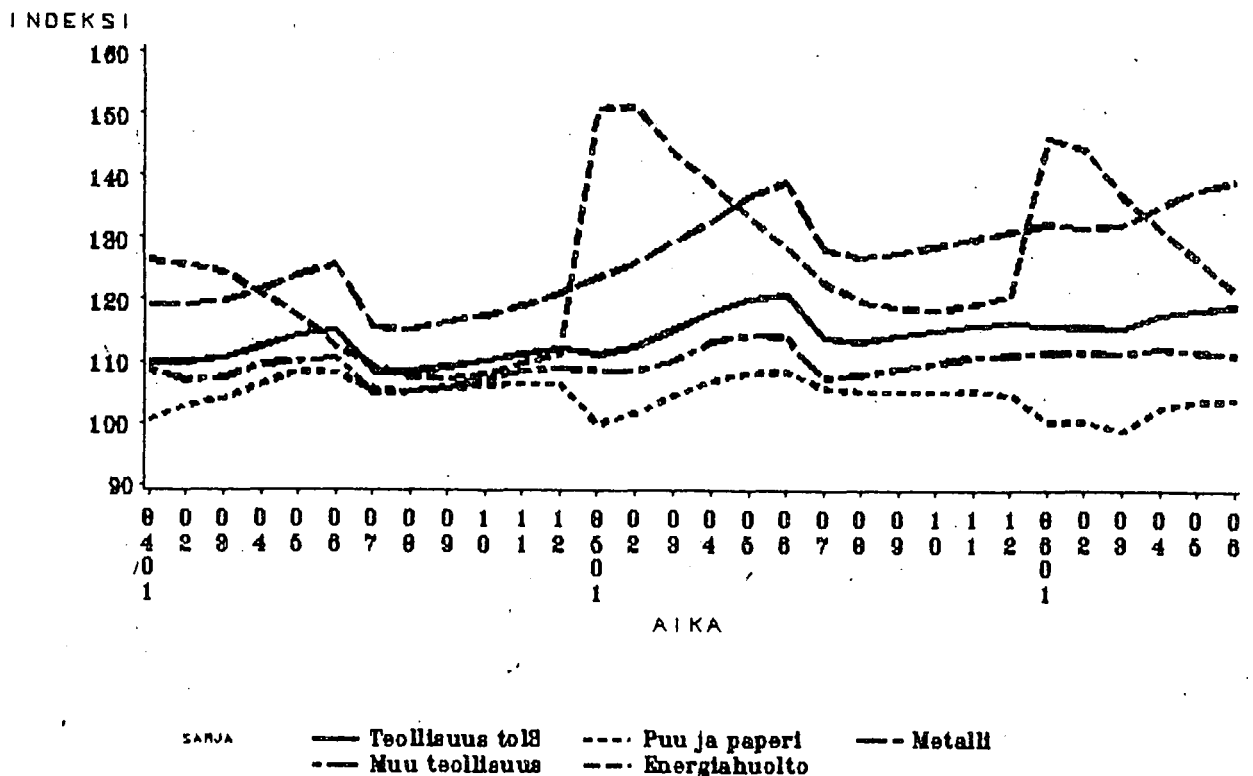
Toimiala - Näringsgren - Industry	Paino Vikt Weight 1980	Paino Vikt Weight 1975
2. Kaivos- ja muu kaivannaistoiminta - Brytning av mineraliska produkter .....	1,5	1,2
230. Malmikaivostoiminta - Malmbrytning .....	0,9	0,7
290. Muu kaivannaistoiminta - Annan brytning och utvinning .....	0,6	0,5
3. Teollisuus - Tillverkning .....	89,5	89,1
311-2. Elintarvikkeiden valmistus - Livsmedelstillverkning .....	8,7	9,7
313. Juomien valmistus - Dryckesvarutillverkning .....	1,4	1,6
314. Tupakkatuotteiden valmistus - Tobaksvarutillverkning .....	0,3	0,4
321. Tekstiilien valmistus - Textilvarutillverkning .....	2,9	3,5
322. Vaatteiden valmistus - Tillverkning av kläder .....	3,1	3,4
323. Nahan, turkisten, laukku- yms. nahkateosten valmistus - Tillverkning av läder, pälskinn, väskor m.m. ....	0,3	0,4
324. Kengien valmistus - Skotillverkning .....	0,8	0,6
331. Puutavaran paitsi puukalusteiden valmistus - Trävarutill- verkning; utom möbeltillverkning .....	7,5	3,5
332. Ei-metallisten kalusteiden valmistus - Tillverkning av möbelvaror, utom av metall .....	1,6	1,6
341. Massan, paperin ja paperituotteiden valmistus - Mass-, pappers- och pappersvarutillverkning .....	13,0	12,3
342. Graafinen tuotanto, kustannustoiminta - Grafisk produktion, förlagsverksamhet .....	6,8	6,0
351. Kemikaalien valmistus - Tillverkning av kemikalier .....	3,5	4,4
352. Muiden kemiallisten tuotteiden valmistus - Tillverkning av andra kemiska produkter .....	2,2	1,9
353. Maaöljyn jalostus - Petroleumraffinering .....	2,8	1,2
354. Maaöljy- ja kivihiilituotteiden valmistus - Tillverkning av petroleum- och kolprodukter .....	0,3	0,3
355. Kumituotteiden valmistus - Gummivarutillverkning .....	0,7	0,9
356. Muovituotteiden valmistus - Plastvarutillverkning .....	1,0	1,0
361. Posliiniteosten ja saviastiain valmistus - Porslins- och tergodstillverkning .....	0,3	0,3
362. Lasin ja lasituotteiden valmistus - Glas- och glasvarutill- verkning .....	0,6	0,6
369. Muu savi- ja kivituotteiden valmistus - Annan ler- och sten- produktillverkning .....	2,7	3,0
371. Raudan, teräksen ja ferroseosten valmistus - Järn-, stål- och ferrolegeringsframställning .....	3,4	3,6
372. Muiden metallien valmistus - Framställning av icke-järnmetall. 381. Metallituotteiden valmistus - Metallvarutillverkning .....	0,9	0,8
382. Koneiden valmistus - Maskintillverkning .....	4,7	4,9
383. Sähkötekniikan tuotteiden valmistus - Tillverkning av elektriska produkter .....	9,2	10,5
384. Kulkuneuvojen valmistus - Transportmedelstillverkning .....	4,3	4,9
385. Instrumenttien ym. hienomekaanisten tuotteiden valmistus - Tillverkning av instrument od. finmekaniska produkter .....	5,1	6,6
390. Muu valmistus - Annan tillverkning .....	0,7	0,6
4. Sähkö-, kaasu- ja vesihuolto - El, gas- och vattenför- sörjning .....	9,0	9,7
410. Sähkö-, kaasu- ja lämpöhuolto - El-, gas- och värmeförsörjning 420. Veden puhdistus ja jakelu - Vattenförsörjning .....	8,5	9,1
	0,5	0,6
2, 3 ja 4. Koko teollisuus - Hela industrin - Total .....	100,0	100,0
Erikaisindeksit - Specialindexar:		
331, 341. Puu- ja paperiteollisuus - Trä- och pappersindustri .....	20,5	15,8
37, 38. Metalliteollisuus - Metallindustri .....	28,3	31,9
Muu 3. Muu teollisuus - Annan industri .....	40,7	41,4
I Investointitavarat - Investeringsvaror .....	11,1	15,2
C Kulutustavarat - Konsumtionsförnödenheter .....	28,5	26,6
R Muut tuotantohyödykkeet - Andra produktionsförnödenheter .....	60,4	58,2

**Kuvio1: Teollisuustuotannon volyymi (tol 2,3 ja 4); Suomi ja OECD  
1980 = 100**



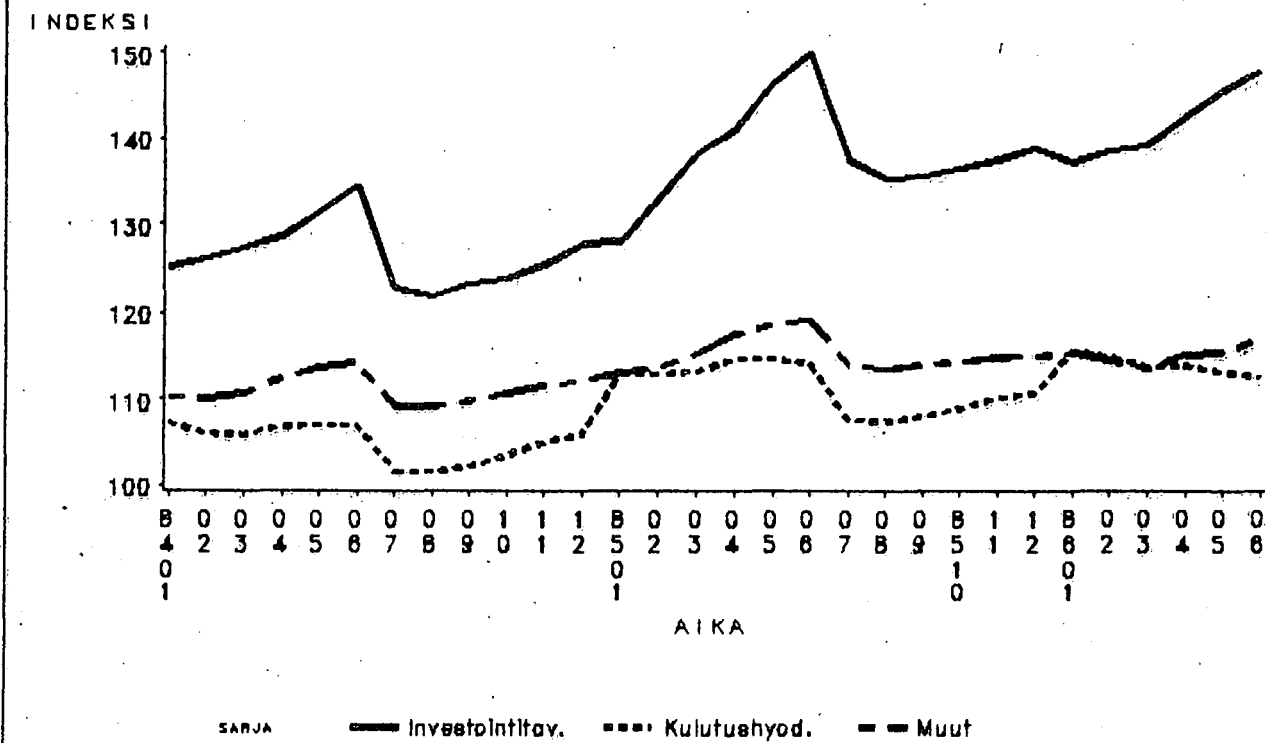
Tilastokeskus

**Kuvio2: Teollisuustuotannon volyymi toimialoitain  
1980 = 100**



Tilastokeskus

**Kuvio 3: Teollisuustuotannon volyymi, investointilavarat, kulutushyodykkeet ja muut tuotantohyodykkeet 1980 = 100**



STATISTIKESKUS

Kuviot 1 - 3 on laadittu kumulatiivisista työpäiväkorjatuista indeksipisteluvuista



TAULU 1:  
TEOLLISUUSTUOTANNON VOLYYMI-INDEKSI V. 1984  
INDUSTRIPRODUKTIONS VOLYINDEX AR 1984

NELJÄNNEKSET  
KVARTAL

TOL NI	TAMMI JAN	HELMI FEBR	MAALIS MARS	HUHTI APRIL	TOUKO MAJ	KESÄ JUNI	HEINÄ JULI	ELO AUG	SYYS SEPT	LOKA OKTOB	MARRAS NOVEMB	JOULU DEC	I	II	III	IV	
230	109.7 -5.9	102.9 2.8	108.0 7.0	98.1 1.8	91.2 -7.7	90.2 -16.3	90.3 9.6	112.6 -11.8	114.2 7.8	128.5 35.7	107.1 14.0	113.2 22.5					
ULT	109.7 -5.9	106.3 -1.9	106.9 0.9	104.7 1.1	102.0 -0.6	100.0 -3.3	98.6 -1.8	100.4 -3.3	101.9 -2.1	104.6 1.4	104.8 2.4	105.5 4.0	106.9 0.9	93.2 -7.7	105.7 0.3	116.2 24.1	
290	54.3 31.2	44.4 -21.7	43.2 -28.0	46.2 22.4	135.8 68.9	457.1 22.6	301.2 -15.6	373.5 -5.9	64.4 7.3	54.9 4.6	50.9 10.5	44.2 -12.7					
ULT	54.3 31.2	49.3 0.6	47.3 -10.3	47.0 -4.0	64.8 17.2	130.2 20.3	154.6 7.6	182.0 3.8	168.9 3.9	157.5 3.9	147.8 4.1	139.2 3.6	47.3 -10.3	213.1 30.2	246.3 -9.2	50.0 0.5	
2	87.5 1.2	79.5 -3.9	82.1 -3.0	77.3 6.1	109.0 19.2	237.0 10.8	174.6 -9.1	217.0 -7.8	94.3 7.6	99.0 27.3	84.6 13.1	85.6 13.1					
ULT	87.5 1.2	83.5 -1.3	83.0 -1.9	81.6 -0.1	87.1 4.1	112.1 6.4	121.0 2.8	133.0 0.4	128.7 1.0	125.7 2.7	122.0 3.3	119.0 3.8	83.0 -1.9	141.1 12.0	162.0 -5.7	89.8 17.9	
311-2	101.2 5.4	91.3 4.0	100.4 -8.2	99.1 -4.1	116.7 0.9	104.6 -2.5	97.6 5.0	115.8 -0.6	106.5 -6.6	141.5 11.1	133.4 1.9	103.4 -2.3					
ULT	101.2 5.4	96.3 4.7	97.6 -0.1	98.0 -1.1	101.7 -0.7	102.2 -1.0	101.6 -0.2	103.3 -0.3	103.7 -1.0	107.5 0.4	109.8 0.6	109.3 0.3	97.6 -0.1	106.8 -1.8	106.6 -1.1	126.1 3.9	
313	88.7 12.0	87.7 8.1	102.8 -4.0	110.7 17.9	123.5 9.2	127.5 3.9	120.8 -6.8	118.9 0.8	90.7 -4.8	100.2 10.8	99.8 17.6	103.5 5.6					
ULT	88.7 12.0	88.2 10.1	93.1 4.4	97.5 7.9	102.7 8.2	106.8 7.3	108.8 4.8	110.1 4.3	107.9 -3.3	107.2 4.0	106.5 5.0	106.2 5.1	93.1 4.4	120.6 9.7	110.2 -3.6	101.1 11.1	
314	112.7 16.5	69.2 4.2	99.2 -5.2	89.9 -4.2	123.6 9.0	117.5 18.1	14.4 -25.9	114.3 -7.8	102.6 -7.7	120.3 4.9	112.8 -4.4	73.7 -20.4					
ULT	112.7 16.5	91.0 11.5	93.7 5.0	92.8 2.6	98.9 4.1	102.0 6.5	89.5 5.5	92.6 3.2	93.7 1.7	96.4 2.1	97.8 1.4	95.8 -0.4	93.7 5.0	110.3 7.9	77.1 -9.1	102.3 -5.7	
321	87.0 2.0	87.5 1.5	87.9 -8.5	80.3 -5.1	93.7 -6.3	84.9 -9.9	41.3 97.0	95.4 5.4	82.4 -13.4	94.0 11.2	98.9 5.0	68.7 -19.2					
ULT	87.0 2.0	87.3 1.7	87.5 -1.9	85.7 -2.7	87.3 -3.5	86.9 -4.6	80.4 -0.8	82.3 0.0	82.3 -1.7	83.5 -0.4	84.9 0.2	83.5 -1.4	87.5 -1.9	86.3 -7.1	73.0 6.0	87.2 -0.8	
322	129.0 8.3	124.8 6.0	110.2 -7.3	89.9 -10.7	85.2 -25.6	101.8 5.8	53.9 245.1	113.1 14.9	84.8 -24.6	126.8 8.0	126.1 2.7	78.5 -1.3					
ULT	129.0 8.3	126.9 7.1	121.3 2.3	113.5 -0.6	107.8 -5.6	106.8 -3.9	99.2 1.7	101.0 3.4	99.2 -0.1	101.9 0.8	104.1 1.0	102.0 0.9	121.3 2.3	92.3 -11.1	83.9 11.2	110.4 3.7	
323	132.9 24.1	116.1 16.3	117.5 12.2	105.6 -0.3	121.9 -14.2	97.8 18.9	10.0 -54.9	132.7 -9.1	112.9 5.5	144.0 40.9	137.5 31.5	91.8 -15.8					
ULT	132.9 24.1	124.5 20.4	122.2 17.6	118.1 13.1	118.8 6.2	115.3 7.8	100.3 5.7	104.3 3.1	105.3 3.3	109.1 7.1	111.7 9.4	110.1 7.1	122.2 17.6	108.4 -1.5	85.2 -7.1	124.4 18.2	

TAULU 1:  
TEOLLISUUSTUUTTANNON VOLYYMI-INDEKSI V. 1984  
INDUSTRIPRODUKTIONS VOLYMINDEKSI ÅR 1984

NELJÄNNEKSET  
-KVARTAL

TOL NI	TAMMI JAN	HELMI FEBR	MAALIS MARS	HUHTI APRIL	TOUKO MAJ	KESÄ JUNI	HEINÄ JULI	ELO AUG	SYYS SEPT	LOKA OKTOB	MARRAS NOVEMB	JOULU DEC	I	II	III	IV	
324	112.8 -1.8	103.0 28.7	116.5 -5.0	101.3 -4.3	113.3 -2.7	103.5 0.8	30.6 202.7	115.9 12.1	95.9 -9.1	137.7 25.7	128.7 38.1	88.8 -1.7					
ULT	112.8	107.9	110.7	108.4	109.4	108.4	97.3	99.6	99.2	103.0	105.4	104.0	110.7	106.0	80.8	118.4	
%	-1.8	10.7	4.7	2.4	1.3	1.2	4.4	5.4	3.6	6.1	8.9	8.1	4.7	-2.1	10.7	21.2	
331	94.1 13.0	88.6 14.4	100.3 3.3	103.9 7.0	121.1 4.2	104.8 -3.2	41.9 21.3	90.1 4.2	99.9 -7.9	104.2 3.0	94.5 4.9	65.4 -16.7					
ULT	94.1	91.3	94.3	96.7	101.6	102.1	93.5	93.1	93.8	94.9	94.8	92.4	94.3	109.9	77.3	88.0	
%	13.0	13.7	9.8	9.0	7.8	5.8	6.7	6.4	4.4	4.3	4.3	2.8	9.8	2.6	1.1	-2.1	
332	125.7 20.1	103.9 13.3	102.3 -2.1	105.0 -4.7	132.2 -12.0	114.2 -6.5	21.5 4.0	148.3 4.6	143.0 -12.4	124.9 8.4	148.7 2.2	90.6 -18.0					
ULT	125.7	114.8	110.6	109.2	113.8	113.9	100.7	106.6	110.7	112.1	115.4	113.4	110.6	117.2	104.2	121.4	
%	20.1	16.9	10.3	6.3	1.4	-0.0	0.1	0.9	-1.3	-0.3	-0.0	-1.4	10.3	-8.1	-4.0	-1.9	
341	110.6 26.3	112.2 16.7	117.6 9.7	102.3 9.4	118.2 14.9	92.5 -6.1	125.6 18.5	118.8 3.3	112.5 7.7	125.6 8.7	124.4 6.3	110.7 12.6					
ULT	110.6	111.4	113.5	110.7	112.2	108.9	111.3	112.2	112.3	113.6	114.6	114.3	113.5	104.6	118.9	120.2	
%	26.3	21.3	17.0	15.2	15.1	11.5	12.6	11.3	10.9	10.6	10.2	10.4	17.0	6.1	9.7	9.0	
342	126.9 12.2	126.0 13.6	132.6 4.5	125.0 8.9	132.2 5.2	109.2 3.6	89.2 12.2	124.6 7.5	130.3 1.8	141.8 11.8	135.4 2.9	106.6 -6.6					
ULT	126.9	126.4	128.5	127.6	128.5	125.3	120.2	120.7	121.8	123.8	124.8	123.3	128.5	122.1	114.7	127.9	
%	12.2	12.9	9.9	9.6	8.7	7.9	8.3	8.2	7.4	7.9	7.4	6.2	9.9	5.9	6.4	3.0	
351	116.8 25.4	109.6 17.9	122.3 5.3	126.6 10.2	115.8 20.2	98.4 -5.9	82.4 5.8	120.6 -0.8	115.1 -2.2	124.3 1.3	120.0 -2.8	112.3 -2.3					
ULT	116.8	113.2	116.3	118.8	118.2	114.9	110.3	111.6	112.0	113.2	113.8	113.7	116.3	113.6	106.1	118.8	
%	25.4	21.7	15.4	14.0	15.1	11.6	10.9	9.2	7.8	7.0	6.0	5.3	15.4	7.9	0.3	-1.3	
352	110.4 18.4	99.2 16.2	121.7 -0.3	103.2 2.4	125.0 3.2	117.8 3.3	57.8 3.8	104.3 -4.0	110.7 -1.6	124.7 14.2	130.4 8.5	90.7 -7.6					
ULT	110.4	104.8	110.4	108.6	111.9	112.9	105.0	104.9	105.6	107.5	109.6	108.0	110.4	115.3	90.9	115.3	
%	18.4	17.3	10.2	8.2	7.1	6.4	6.2	4.8	4.0	5.1	5.5	4.4	10.2	3.0	-1.4	5.5	
353	104.9 10.9	102.4 13.1	106.8 6.2	101.9 7.6	94.8 -3.3	101.2 -5.7	94.3 -3.2	62.9 -34.2	72.2 2.5	86.2 44.6	91.6 -6.2	97.0 -2.5					
ULT	104.9	103.6	104.7	104.0	102.2	102.0	100.9	96.1	93.5	92.8	92.7	93.0	104.7	99.3	76.5	91.6	
%	10.9	12.0	9.9	9.4	6.8	4.5	3.4	-1.2	-0.9	2.1	1.3	0.9	9.9	-0.7	-12.9	7.0	
354	126.1 -14.9	113.4 -17.5	107.7 -28.4	116.6 -7.8	176.2 -8.8	218.7 37.5	228.2 73.5	221.4 62.4	130.3 -5.5	118.7 7.7	75.1 -25.4	98.3 -35.3					
ULT	126.1	119.7	115.7	115.9	128.0	143.1	155.3	163.5	159.8	155.7	148.4	144.2	115.7	170.5	193.3	97.4	
%	-14.9	-16.1	-20.4	-17.6	-15.3	-6.1	4.0	10.8	9.1	9.0	6.7	2.9	-20.4	6.8	43.5	-19.5	

TAULU 1:  
TEOLLISUUSTUOTANNON VOLYYMI-INDEKSI V. 1984  
INDUSTRIPRODUKTIONS VOLYMINDEKX AR 1984

NELJÄNNEKSET  
KVARTAL

TOL NI	TAMMI JAN	HELMI FEBR	MAALIS MARS	HUHTI APRIL	TOUKO MAJ	KESÄ JUNI	HEINA JULI	ELO AUG	SYYS SEPT	LOKA OKTOB	MARRAS NOVEMB	JOULU DEC	I	II	III	IV
355	101.7 14.4	97.9 2.9	86.6 -0.0	106.4 -1.2	101.5 -4.7	100.9 -3.8	8.7 -30.9	120.5 5.8	88.4 -14.7	101.2 6.1	143.6 11.4	101.2 -11.8	95.4 5.7	102.3 -3.2	72.5 -5.5	115.3 2.1
ULT	101.7	99.8	95.4	97.6	98.4	98.8	86.0	90.3	90.1	91.2	95.9	96.4	95.4	102.3	72.5	115.3
%	14.4	8.5	5.7	3.8	1.9	0.9	0.2	1.1	-0.9	-0.2	1.3	-0.0	5.7	-3.2	-5.5	2.1
356	187.2 36.1	119.3 19.5	168.4 33.2	121.4 6.5	139.1 7.3	116.4 -9.6	55.9 8.1	101.0 -21.6	100.3 -18.1	167.8 15.2	130.4 -18.0	116.6 -13.9	158.3 30.5	125.6 1.2	85.7 -15.1	138.3 -5.7
ULT	187.2	153.3	158.3	149.1	147.1	142.0	129.7	126.1	123.2	127.7	127.9	127.0	158.3	125.6	85.7	138.3
%	36.1	29.1	30.5	24.8	21.1	15.7	15.2	10.0	6.7	7.8	4.7	3.0	30.5	1.2	-15.1	-5.7
361	106.2 15.2	108.9 14.0	117.4 15.7	91.9 -2.4	96.0 9.0	111.1 -13.5	72.7 -26.1	92.3 -20.2	99.5 -14.9	110.1 -7.3	113.1 -6.1	116.2 -17.9	110.8 15.0	99.7 -3.8	88.2 -20.1	113.1 -10.8
ULT	106.2	107.5	110.8	106.1	104.1	105.3	100.6	99.6	99.6	100.6	101.7	102.9	110.8	99.7	88.2	113.1
%	15.2	14.6	15.0	10.7	10.4	5.3	0.8	-2.1	-3.8	-4.2	-4.4	-5.8	15.0	-3.8	-20.1	-10.8
362	95.2 6.1	86.0 0.1	97.0 10.6	72.3 -22.5	73.3 6.6	66.2 -8.1	39.6 -15.9	121.2 13.2	169.6 -9.8	125.6 4.7	90.0 -5.1	94.5 -13.3	92.7 5.6	70.6 -9.5	110.1 -3.5	103.3 -4.2
ULT	95.2	90.6	92.7	87.6	84.7	81.7	75.6	81.3	91.2	94.6	94.2	94.2	92.7	70.6	110.1	103.3
%	6.1	3.2	5.6	-1.7	-0.4	-1.5	-2.7	-0.1	-2.3	-1.4	-1.8	-2.8	5.6	-9.5	-3.5	-4.2
369	104.1 -16.6	90.1 -13.1	111.6 -11.3	103.7 -7.2	129.7 -6.2	126.8 -6.9	69.2 -1.1	129.8 -0.6	118.9 -13.0	144.7 4.3	125.5 5.0	91.4 -7.6	112.1 -6.2	120.1 -13.7	106.0 -5.7	120.5 1.3
ULT	104.1	97.1	102.0	102.4	107.9	111.0	105.0	108.1	109.3	112.9	116.0	111.0	117.0	111.1	96.0	120.0
%	-16.6	-15.0	-13.7	-12.1	-10.8	-10.1	-9.3	-8.1	-8.7	-7.2	-6.1	-6.2	-6.2	-6.7	-5.7	-5.7
371	117.4 2.2	119.0 16.6	116.6 3.8	114.1 7.0	123.5 6.9	95.8 2.1	64.1 7.4	107.6 5.9	116.4 -3.1	128.2 15.0	120.4 6.0	111.2 7.3	111.0 6.2	111.1 7.2	96.0 2.4	120.0 9.4
ULT	117.4	118.2	117.0	116.3	117.7	114.0	106.9	107.0	108.0	110.1	111.0	111.0	111.0	111.1	96.0	120.0
%	2.2	9.0	7.2	7.2	7.1	6.4	6.5	6.4	5.2	6.2	6.2	6.3	7.2	5.5	2.4	9.4
372	139.1 20.3	128.2 12.0	142.6 13.2	141.9 17.0	143.0 14.3	114.1 -9.8	104.2 0.1	129.1 17.1	129.7 11.5	153.8 25.3	150.3 15.5	142.6 11.7	136.6 15.1	133.0 7.0	121.0 9.8	148.9 17.4
ULT	139.1	133.7	136.6	138.0	139.0	134.8	130.4	130.3	130.2	132.6	134.2	134.9	136.6	133.0	121.0	148.9
%	20.3	16.2	15.1	15.6	15.3	11.0	9.6	10.5	10.6	12.1	12.4	12.4	15.1	7.0	9.8	17.4
381	120.4 -2.5	108.6 -13.1	124.7 -7.2	119.1 -12.9	147.3 1.7	134.9 -3.3	73.3 13.6	139.6 -1.6	134.6 -2.4	161.1 18.0	153.6 10.0	122.9 -0.8	128.3 -0.5	117.9 -7.6	133.8 -4.7	145.9 9.4
ULT	120.4	114.5	117.9	118.2	124.0	125.8	118.3	121.0	122.5	126.3	128.8	128.3	128.3	117.9	133.8	145.9
%	-2.5	-7.8	-7.6	-9.0	-6.7	-6.1	-4.6	-4.2	-4.0	-1.6	-0.5	-0.5	-0.5	-7.6	-4.7	9.4
382	118.3 10.4	122.0 14.7	129.0 10.1	109.7 -8.1	138.0 13.3	142.6 4.6	53.2 35.1	120.8 17.8	119.6 -0.4	130.7 19.6	135.9 12.7	116.2 5.6	123.1 11.7	130.1 3.4	97.9 12.1	127.6 12.6
ULT	118.3	120.1	123.1	119.8	123.4	126.6	116.1	116.7	117.0	118.4	120.0	119.7	123.1	130.1	97.9	127.6
%	10.4	12.5	11.7	6.4	7.9	7.2	8.7	9.8	8.5	9.7	10.0	9.6	11.7	3.4	12.1	12.6

TAULU 1:  
TEOLLISUUSTUOTANNON VOLYYMI-INDEKSI V. 1984  
INDUSTRIPRODUKTIONS VOLYYMINDEKX ÅR 1984

NELJÄNNEKSET  
KVARTAL

TOL NI	TAMMI JAN	HELMI FEBR	MAALIS MARS	HUHTI APRIL	TOUKO MAJ	KESÄ JUNI	HEINÄ JULI	ELO AUG	SYYS SEPT	LOKA OKTOB	MARRAS NOVEMB	JOULU DEC	I	II	III	IV	
383	126.0 6.6	103.7 2.8	114.2 -7.2	110.8 0.5	129.0 1.1	122.9 8.2	38.6 42.4	119.6 0.5	122.1 -1.0	135.5 26.8	145.7 18.6	105.0 -3.3					
ULT	126.0	114.9	114.6	113.7	116.7	117.8	106.5	108.1	109.7	112.2	115.3	114.4	114.6	120.9	93.5	128.7	
%	6.6	4.9	0.5	0.5	0.6	1.9	3.4	3.0	2.5	4.9	6.3	5.5	0.5	3.2	4.0	14.2	
384	133.2 0.7	122.0 3.4	123.4 -4.2	110.5 -7.5	140.9 -1.5	110.1 -3.2	45.4 -20.2	104.5 0.8	107.1 -20.3	126.8 9.1	132.5 -2.2	107.0 -14.6					
ULT	133.2	127.6	126.2	122.3	126.0	123.3	112.2	111.2	110.8	112.4	114.2	113.6	126.2	120.5	85.7	122.1	
%	0.7	1.9	-0.2	-1.9	-1.8	-2.0	-3.3	-2.8	-5.1	-3.7	-3.5	-4.5	-0.2	-3.9	-12.9	-2.8	
385	146.5 36.7	177.7 41.8	204.1 39.6	156.5 11.7	211.2 30.0	192.0 14.0	66.3 16.5	179.4 46.5	170.8 32.6	150.6 15.2	208.0 32.4	235.4 31.8					
ULT	146.5	162.1	176.1	171.2	179.2	181.3	164.9	166.7	167.2	165.5	169.4	174.9	176.1	186.5	138.8	198.0	
%	36.7	39.5	39.5	32.0	31.5	28.0	27.3	29.6	29.9	28.4	28.9	29.2	39.5	18.8	35.1	27.4	
390	93.2 1.1	86.2 -4.9	118.0 6.8	123.3 3.6	137.3 3.2	130.7 -2.1	34.5 31.5	117.9 3.1	114.3 -2.9	150.1 26.0	164.8 18.8	89.4 -7.3					
ULT	93.2	89.7	99.1	105.2	111.6	114.8	103.3	105.1	106.1	110.5	115.5	113.3	99.1	130.4	88.9	134.7	
%	1.1	-1.9	1.4	2.0	2.3	1.4	2.6	2.6	1.9	4.6	6.3	5.3	1.4	1.5	3.2	14.1	
3	114.3 10.3	108.4 9.2	116.5 1.8	107.9 0.5	124.1 4.2	111.3 -1.0	73.2 14.2	115.2 3.5	112.3 -4.0	128.4 12.4	126.8 5.9	102.8 -2.0					
ULT	114.3	111.3	113.1	111.8	114.2	113.7	107.9	108.8	109.2	111.1	112.6	111.8	113.1	114.4	100.2	119.3	
%	10.3	9.8	6.9	5.3	5.0	4.0	4.9	4.7	3.0	4.6	4.7	4.2	6.9	4.3	2.8	5.6	
410	130.2 11.8	120.0 7.4	125.6 8.8	106.9 5.7	103.9 8.0	86.0 -2.1	92.1 7.3	96.8 1.2	104.9 13.4	116.9 11.3	127.2 7.9	130.9 4.8					
ULT	130.2	125.1	125.2	120.7	117.3	112.1	109.2	107.7	107.4	108.3	110.0	111.8	125.2	98.9	97.9	125.0	
%	11.8	9.6	9.4	8.5	8.4	7.0	7.0	6.3	7.0	7.5	7.5	7.3	9.4	4.1	7.2	7.8	
420	106.9 -0.0	98.8 2.8	106.9 0.4	103.6 2.3	109.9 5.1	97.7 2.2	89.8 -4.2	103.4 -3.1	100.4 -3.1	105.3 -0.7	103.5 -0.9	103.8 -0.9					
ULT	106.9	102.9	104.2	104.1	105.2	104.0	101.9	102.1	101.9	102.3	102.4	102.5	104.2	103.7	97.9	104.2	
%	-0.0	1.3	1.0	1.3	2.1	2.1	1.3	0.7	0.3	0.2	0.1	-0.0	1.0	3.2	-3.4	-0.8	
4	128.8 11.1	118.7 7.1	124.4 8.4	106.7 5.5	104.2 7.8	86.8 -1.8	91.9 6.5	97.2 0.9	104.6 12.2	116.2 10.5	125.8 7.4	129.2 4.5					
ULT	128.8	123.7	124.0	119.6	116.6	111.6	108.8	107.3	107.0	108.0	109.6	111.2	124.0	99.2	97.9	123.7	
%	11.1	9.2	8.9	8.1	8.1	6.7	6.7	6.0	6.6	7.0	7.1	6.8	8.9	4.0	6.5	7.3	
2, 3 ja 4	115.2 19.3	108.9 8.8	116.7 2.3	107.3 1.0	122.1 4.7	111.0 -0.7	76.5 12.3	115.1 2.9	111.3 -2.7	126.8 12.4	126.1 6.1	104.9 -1.2					
ULT	115.2	112.0	113.6	112.0	114.0	113.5	108.2	109.1	109.3	111.1	112.4	111.8	113.6	113.5	101.0	119.3	
%	10.3	9.6	7.0	5.5	5.3	4.3	5.0	4.7	3.8	4.8	4.9	4.4	7.0	1.7	2.9	5.9	

TAULU 1:  
TEOLLISUUSTUOTANNON VOLYYMI-INDEKSI V. 1984  
INDUSTRIPRODUKTIONS VOLYMINDEKSI ÅR 1984

NELJÄNNEKSET  
KVARTAL

TOL NI	TAMMI JAN	HELMI FEBR	MAALIS MARS	HUHTI APRIL	TOUKO MAJ	KESÄ JUNI	HEINÄ JULI	ELO AUG	SYYS SEPT	LOKA OKTOB	MARRAS NOVEHB	JOULU DEC	I	II	III	IV
331, 341 %	104.6 21.6	103.6 16.0	111.3 7.5	102.9 8.5	119.3 10.7	97.0 -5.0	95.1 18.9	108.3 3.6	107.9 1.9	117.8 6.8	113.5 5.9	94.2 3.4				
ULT %	104.6 21.6	104.1 18.7	106.5 14.6	105.6 13.0	108.3 12.5	106.4 9.5	104.8 10.6	105.3 9.6	105.6 8.7	106.8 8.5	107.4 8.2	106.3 7.9	106.5 14.6	106.4 4.8	103.8 7.2	108.5 5.5
37 - 38 %	123.7 5.5	118.1 6.5	125.5 1.9	114.3 -4.7	138.9 6.3	127.1 2.0	56.1 12.8	120.9 7.5	121.4 -3.8	136.7 17.9	140.1 10.2	117.0 0.6				
ULT %	123.7 5.5	120.9 6.0	122.5 4.5	120.4 2.2	124.1 3.1	124.6 2.9	114.8 3.5	115.6 4.0	116.2 3.0	118.3 4.6	120.3 5.1	120.0 4.8	122.5 4.5	126.8 1.3	99.5 3.5	131.3 9.6
Muu 3 %	112.5 9.4	104.0 8.1	112.7 -1.0	106.0 0.9	116.0 -0.6	107.3 -1.5	74.0 12.0	114.6 0.6	108.0 -7.0	127.9 11.3	124.3 2.7	97.0 -6.7				
ULT %	112.5 9.4	108.2 8.8	109.7 5.2	108.8 4.1	110.2 3.1	109.7 2.3	104.6 3.2	105.9 2.9	106.1 1.6	108.3 2.7	109.7 2.7	108.7 1.9	109.7 5.2	109.8 -0.4	98.9 0.2	116.4 2.7
I %	130.5 8.4	126.8 10.3	135.2 5.2	119.3 -5.3	148.8 8.7	141.1 3.9	54.7 17.6	127.1 11.5	126.8 -3.5	141.0 18.3	147.4 11.3	122.7 1.0				
ULT %	130.5 8.4	128.6 9.3	130.8 7.9	127.9 4.5	132.1 5.4	133.6 5.1	122.3 5.9	122.9 6.6	123.4 5.3	125.1 6.6	127.2 7.1	126.8 6.6	130.8 7.9	136.4 2.7	102.9 5.7	137.0 10.2
C %	111.1 9.2	103.5 7.6	109.5 -1.0	100.8 -0.1	111.1 -0.9	101.7 -0.4	72.0 14.2	108.9 2.4	103.1 -5.3	123.1 12.3	123.9 5.3	98.3 -3.7				
ULT %	111.1 9.2	107.3 8.4	108.0 5.0	106.2 3.8	107.2 2.8	106.3 2.2	101.4 3.3	102.3 3.2	102.4 2.2	104.5 3.3	106.2 3.5	105.6 2.9	108.0 5.0	104.5 -0.5	94.7 2.1	115.1 4.8
R %	114.2 11.0	108.1 8.9	116.6 3.2	108.1 2.6	122.4 6.3	110.0 -1.9	82.2 10.7	115.7 1.5	112.3 -1.4	125.8 11.3	123.1 5.3	104.8 -0.5				
ULT %	114.2 11.0	111.1 10.0	112.9 7.6	111.7 6.3	113.9 6.3	113.2 4.9	108.8 5.5	109.7 4.9	110.0 4.2	111.5 4.9	112.6 5.0	111.9 4.5	112.9 7.6	113.5 2.4	103.4 2.6	117.9 5.5

TAULU 2:  
TEOLLISUUSTUOTANNON VOLYYMI-INDEKSI TYÖPÄIVÄÄ KOHTI V. 1984  
INDUSTRIPRODUKTIONS VOLYMINDEKSI PER ARBETSDAG ÅR 1984

NELJÄNNEKSET  
KVARTAL

TCL NI	TAMMI JAN	HELMI FEBR	MAALIS MARS	HUHTI APRIL	TOUKO MAJ	KESÄ JUNI	HEINÄ JULI	ELO AUG	SYYS SEPT	LOKA OKTOB	MARRAS NOVEMB	JOULU DEC	I	II	III	IV	
230	107.1 -5.7	105.9 -0.5	103.9 7.2	102.9 2.1	89.6 -9.3	96.8 -14.4	86.9 9.9	108.2 -11.6	113.7 8.1	123.5 35.9	107.5 14.2	120.0 23.4					
ULT	107.1	106.5	105.6	104.9	101.9	101.0	99.0	100.2	101.7	103.8	104.2	105.5	105.6	96.4	102.9	117.0	
290	52.3 26.3	45.3 -25.4	41.7 -26.4	49.4 25.1	130.5 67.2	483.7 25.8	290.3 -18.9	348.4 -6.5	66.6 12.9	51.8 -1.1	50.0 9.8	51.3 -1.9					
ULT	52.3	48.8	46.4	47.2	63.8	133.8	156.2	180.2	167.0	156.0	146.4	138.4	46.4	221.2	235.1	51.0	
2	85.2 0.6	81.6 -7.4	79.0 -2.2	81.5 6.8	106.0 17.1	251.6 13.5	168.3 -11.7	204.3 -8.2	94.8 9.4	94.8 25.6	84.5 13.2	92.5 16.7					
ULT	85.2	83.4	81.9	81.8	86.7	114.1	121.9	132.2	128.0	124.7	121.1	118.7	81.9	146.4	155.8	90.6	
311-2	97.6 -0.1	92.0 -2.1	96.1 -6.1	109.7 -1.0	112.4 -0.5	109.1 0.3	93.9 -0.1	107.0 -1.8	111.3 0.1	131.0 2.0	129.1 0.7	125.4 15.5					
ULT	97.6	94.8	95.2	98.8	101.5	102.8	101.5	102.2	103.2	106.0	108.1	109.5	95.2	110.4	104.1	128.5	
313	85.0 5.7	88.1 1.5	98.5 -1.3	123.5 22.1	118.3 7.5	134.1 7.3	115.6 -12.3	109.1 -0.7	95.3 2.7	92.0 0.2	95.7 15.8	128.3 27.6					
ULT	85.0	86.5	90.5	98.8	102.7	107.9	109.0	109.0	107.5	106.0	105.0	107.0	90.5	125.3	106.7	105.3	
314	107.6 9.5	69.2 -2.3	94.7 -2.5	101.6 -0.6	118.0 7.3	123.4 22.1	13.7 -30.4	104.4 -9.3	107.7 -0.0	109.9 -5.7	107.7 -5.8	94.0 -2.6					
ULT	107.6	88.4	90.5	93.3	98.2	102.4	89.7	91.6	93.4	95.0	96.2	96.0	90.5	114.3	75.3	103.9	
321	84.1 -2.5	87.8 -4.0	83.7 -6.5	89.5 -2.5	90.6 -8.6	90.3 -6.3	39.5 90.1	88.0 4.3	84.8 -8.1	86.7 3.0	95.7 3.9	83.2 -6.7					
ULT	84.1	86.0	85.2	86.3	87.2	87.7	80.8	81.7	82.0	82.5	83.7	83.7	85.2	90.1	70.8	88.6	
322	123.5 1.7	125.2 -0.6	105.4 -4.6	100.2 -7.4	81.6 -26.8	107.2 9.3	51.6 224.5	103.6 13.1	89.3 -18.4	116.1 -2.9	120.8 1.2	97.9 20.1					
ULT	123.5	124.4	118.1	113.6	107.2	107.2	99.2	99.8	98.6	100.4	102.2	101.9	118.1	96.3	81.5	111.6	
323	127.3 16.7	116.5 9.1	112.5 15.6	117.1 3.4	116.7 -15.5	103.0 22.9	9.5 -57.5	121.6 -10.5	118.9 14.2	131.9 26.6	131.7 29.4	115.4 3.1					
ULT	127.3	121.9	118.8	118.4	118.0	115.5	100.4	103.0	104.8	107.5	109.7	110.2	118.8	112.3	83.3	126.3	
	16.7	12.9	13.7	11.0	4.5	6.9	4.7	2.2	3.5	5.9	8.1	7.6	13.7	0.5	-4.7	19.2	

TAULU 2:  
TEOLLISUUSTUOTANNON VOLYYMI-INDEKSI TYÖPÄIVÄÄ KOHTI V.1984  
INDUSTRIPRODUKTIONS VOLYMINDEKSI PER ARBETSDAG ÅR 1984

NELJÄNNEKSET  
KVARTAL

TOL NI	TAMMI JAN	HELMI FEBR	MAALIS MARS	HUHTI APRIL	TOUKO MAJ	KESÄ JUNI	HEINÄ JULI	ELO AUG	SYYS SEPT	LOKA OKTOB	MARRAS NOVEMB	JOULU DEC	I	II	III	IV	
324	108.0 -7.7	103.4 20.7	111.6 -2.2	112.4 -0.8	108.5 -4.2	109.1 4.2	29.3 184.5	106.2 10.4	101.1 -1.6	126.3 13.0	123.4 36.0	110.1 19.5					
ULT	108.0	105.7	107.7	108.9	108.8	108.8	97.5	98.6	98.8	101.6	103.6	104.1	107.7	110.0	78.8	119.9	
%	-7.7	4.3	1.9	1.2	0.1	0.8	3.6	4.5	3.8	4.8	7.5	8.5	1.9	-0.4	13.1	22.1	
331	90.7 7.5	88.7 7.9	95.4 5.8	117.0 10.3	116.6 1.7	111.3 0.8	39.8 15.5	82.7 3.0	103.2 -1.9	95.7 -5.3	91.0 3.6	80.8 -2.2					
ULT	90.7	89.7	91.6	97.9	101.7	103.3	94.2	92.8	93.9	94.1	93.8	92.7	91.6	115.0	75.2	89.1	
%	7.5	7.7	7.0	8.0	6.5	5.4	6.0	5.6	4.7	3.5	3.6	3.1	7.0	4.1	2.6	-1.5	
332	120.5 12.9	104.3 6.2	98.0 0.8	116.7 -1.2	126.7 -13.4	120.2 -3.3	20.6 -2.2	135.9 2.9	150.7 -5.1	114.4 -2.5	142.5 0.6	112.7 -0.2					
ULT	120.5	112.4	107.6	109.8	113.2	114.4	101.0	105.3	110.4	110.8	113.7	113.6	107.6	121.2	102.4	123.2	
%	12.9	9.7	6.8	4.6	-0.1	-0.7	-0.7	-0.1	-0.9	-1.1	-0.9	-0.8	6.8	-6.5	-1.5	-0.6	
341	105.9 25.8	114.4 12.6	112.3 10.3	111.2 10.1	116.7 8.9	103.2 0.1	120.0 18.7	112.9 3.4	111.9 9.1	119.3 7.7	122.5 6.4	118.9 15.1					
ULT	105.9	110.1	110.9	111.0	112.1	110.6	112.0	112.1	112.1	112.8	113.7	114.1	110.9	110.4	114.9	120.2	
%	25.8	18.6	15.6	14.2	13.1	10.8	12.0	10.8	10.6	10.3	9.9	10.3	15.6	6.4	10.2	9.6	
342	122.6 7.8	126.5 7.8	126.0 6.4	136.2 11.7	128.9 2.7	116.2 7.4	85.1 8.2	115.3 6.6	133.3 7.2	131.2 4.6	132.1 2.0	129.8 6.2					
ULT	122.6	124.6	125.1	127.8	128.0	126.1	120.2	119.6	121.1	122.1	123.0	123.6	125.1	127.1	111.2	131.0	
%	7.8	7.8	7.3	8.4	7.2	7.3	7.4	7.3	7.2	7.0	6.4	6.4	7.3	7.2	7.2	4.2	
351	114.4 24.4	113.4 13.5	118.7 6.1	132.3 11.1	113.4 19.0	102.7 -4.1	80.0 5.1	116.1 -0.9	116.7 -0.6	119.7 -0.4	120.0 -2.9	117.3 0.5					
ULT	114.4	113.9	115.5	119.7	118.5	115.8	110.7	111.4	112.0	112.8	113.4	113.7	115.5	116.2	104.3	119.0	
%	24.4	18.7	14.1	13.2	14.3	11.1	10.5	8.9	7.7	6.8	5.8	5.3	14.1	8.4	0.7	-1.0	
352	105.8 11.3	99.7 9.1	116.6 2.6	114.6 6.1	119.5 1.6	124.0 6.7	55.4 -2.4	95.6 -5.5	116.3 6.4	114.6 2.9	124.9 6.8	113.0 12.0					
ULT	105.8	102.7	107.4	109.2	111.2	113.4	105.1	103.9	105.3	106.2	107.9	108.3	107.4	119.4	89.1	117.5	
%	11.3	10.2	7.3	7.0	5.8	6.0	5.3	3.9	4.2	4.1	4.4	5.0	7.3	4.8	0.0	7.1	
353	103.2 11.2	107.7 9.5	105.1 6.5	103.6 7.8	93.3 -3.0	102.9 -5.5	92.7 -2.9	61.9 -34.1	73.4 2.8	84.8 45.0	93.1 -5.9	95.4 -2.2					
ULT	103.2	105.4	105.3	104.9	102.6	102.6	101.2	96.3	93.7	92.9	92.9	93.1	105.3	99.9	76.0	91.1	
%	11.2	10.4	9.0	8.7	6.4	4.2	3.2	-1.3	-0.9	2.0	1.2	0.9	9.0	-0.4	-12.6	7.1	
354	120.8 -20.0	113.8 -22.7	103.2 -26.4	130.0 -4.4	168.8 -10.3	230.5 42.1	218.5 64.9	202.8 59.9	137.3 2.4	108.8 -3.2	71.9 -26.6	122.0 -21.4					
ULT	120.8	117.3	112.6	116.9	127.3	144.5	155.1	161.0	158.4	153.4	146.0	144.0	112.6	176.4	186.2	100.9	
%	-20.0	-21.3	-22.9	-18.5	-16.5	-6.2	2.7	8.8	8.2	7.3	5.1	2.7	-22.9	8.8	42.0	-17.2	

TAULU 2:  
TEOLLISUUSTUOTANNON VOLYYMI-INDEKSI TYÖPÄIVÄÄ KOHTI V. 1984  
INDUSTRIPRODUKTIONS VOLYYMINDEKS PER ARBETSDAG AR 1984

NELJÄNNEKSET  
KVARTAL

TOL NI	TAMMI JAN	HELMI FEBR	MAALIS MARS	HUHTI APRIL	TOUKO MAJ	KESÄ JUNI	HEINÄ JULI	ELO AUG	SYYS SEPT	LOKA OKTOB	MARRAS NOVEMB	JOULU DEC	I	II	III	IV
355	97.5 7.5	98.3 -3.5	83.0 2.9	116.1 2.4	96.6 -6.2	106.4 -0.5	8.3 -35.1	110.5 4.1	93.2 -7.7	92.8 -4.7	137.7 9.7	125.8 7.3				
ULT %	97.5	97.9	92.9	98.7	98.3	99.7	86.6	89.6	90.0	90.3	94.6	97.2	92.9	106.4	70.7	118.8
	7.5	1.7	2.0	2.2	0.4	0.2	-0.5	0.2	-0.8	-1.2	0.1	0.8	2.0	-1.3	-3.6	4.8
356	179.5 30.6	120.9 13.4	161.6 35.9	130.5 9.0	135.1 4.0	126.4 -4.7	53.6 4.5	94.7 -21.8	103.1 -14.1	156.3 7.6	126.5 -18.8	138.3 -1.4				
ULT %	179.5	150.2	154.0	148.1	145.5	142.3	129.7	125.3	122.8	126.2	126.2	127.2	154.0	130.7	83.8	140.3
	30.6	23.1	27.3	22.7	18.8	14.6	13.9	9.2	6.5	6.6	3.7	3.2	27.3	2.5	-14.0	-4.6
361	102.2 8.2	109.8 6.9	113.0 19.1	102.5 1.1	92.4 10.0	111.5 -13.0	70.0 -30.5	85.0 -21.4	105.3 -7.9	101.4 -16.7	108.8 -7.6	144.7 -0.1				
ULT %	102.2	106.0	108.3	106.9	104.0	105.2	100.2	98.3	99.1	99.3	100.2	103.9	108.3	102.1	86.8	118.3
	8.2	7.5	11.3	8.7	8.9	4.3	-0.7	-3.5	-4.0	-5.5	-5.7	-5.1	11.3	-2.3	-19.5	-7.6
362	92.7 4.0	87.8 -4.3	93.2 11.4	75.7 -21.8	72.0 5.6	69.2 -7.0	38.3 -17.0	115.5 12.9	172.7 -7.4	119.2 1.4	89.3 -5.3	104.7 -7.3				
ULT %	92.7	90.2	91.2	87.4	84.3	81.8	75.6	80.6	90.8	93.6	93.2	94.2	91.2	72.3	108.8	104.4
	4.0	-0.2	3.5	-3.3	-1.9	-2.6	-3.8	-1.2	-2.6	-2.1	-2.4	-2.9	3.5	-9.4	-2.5	-3.6
369	100.4 -19.7	91.7 -17.6	107.6 -9.6	113.0 -5.1	125.1 -6.9	132.0 -5.0	66.8 -3.9	121.6 -1.5	123.2 -8.4	135.5 -2.3	122.3 4.0	106.2 4.8				
ULT %	100.4	96.0	99.9	103.2	107.6	111.6	105.2	107.3	109.1	111.7	112.7	112.1	99.9	123.4	103.9	121.3
	-19.7	-18.7	-15.7	-13.0	-11.7	-10.4	-9.9	-8.8	-8.7	-8.0	-6.9	-6.1	-15.7	-5.7	-4.8	1.8
371	113.8 0.1	121.8 11.3	111.1 5.8	123.5 8.1	119.7 5.3	100.0 5.1	61.7 4.8	102.0 5.4	119.2 0.4	121.3 9.9	118.4 5.3	123.7 16.3				
ULT %	113.8	117.8	115.5	117.5	118.0	115.0	107.4	106.7	108.1	109.4	110.2	111.3	115.5	114.4	94.3	121.1
	0.1	5.6	5.7	6.3	6.1	6.0	5.9	5.8	5.1	5.6	5.6	6.5	5.7	6.2	3.1	10.4
372	136.1 18.2	133.1 7.2	139.5 14.4	148.5 18.4	139.8 13.9	115.8 -8.8	102.0 -1.4	124.5 16.7	133.7 14.6	148.1 21.1	150.3 15.2	147.8 18.0				
ULT %	136.1	134.6	136.2	139.3	139.4	135.5	130.7	129.9	130.3	132.1	133.8	134.9	136.2	134.7	120.1	148.7
	18.2	12.5	13.2	14.5	14.4	10.4	8.9	9.8	10.3	11.5	11.8	12.4	13.2	7.7	10.2	18.1
381	115.2 -8.3	108.8 -18.5	119.3 -4.6	133.4 -9.8	140.9 0.2	141.9 -0.1	70.1 6.9	127.8 -3.1	141.5 5.6	147.5 6.2	147.0 8.3	154.1 20.7				
ULT %	115.2	112.0	114.4	119.2	123.5	126.6	118.5	119.7	122.1	124.6	126.7	129.0	114.4	138.7	113.1	149.5
	-8.3	-13.6	-10.6	-10.4	-8.2	-6.8	-5.8	-5.4	-4.1	-3.0	-1.9	-0.1	-10.6	-3.3	2.4	11.5
382	113.2 3.7	122.3 7.5	123.5 13.3	122.5 -4.7	132.1 11.5	150.1 8.1	51.0 26.9	110.6 15.9	126.0 7.9	119.6 7.5	130.1 11.0	145.3 28.6				
ULT %	113.2	117.8	119.7	120.4	122.7	127.3	116.4	115.7	116.8	117.1	118.3	120.5	119.7	134.9	95.8	131.7
	3.7	5.7	8.2	4.6	6.0	6.4	7.5	8.4	8.4	8.3	8.5	10.3	8.2	4.9	14.0	15.7



TAULU 2:  
TEOLLISUUSTUOTANNON VOLYYMI-INDEKSI TYÖPÄIVÄÄ KOHTI V.1984  
INDUSTRIPRODUKTIONS VOLYMINDEKX PER ARBETS DAG ÅR 1984

NELJÄNNEKSET  
KVARTAL

TOL NI	TAMMI JAN	HELMI FEBR	MAALIS MARS	HUHTI APRIL	TOUKO MAJ	KESÄ JUNI	HEINÄ JULI	ELO AUG	SYYS SEPT	LOKA OKTOB	MARRAS NOVEMB	JOULU DEC	I	II	III	IV
383	120.9 0.5	104.1 -3.4	109.3 -4.7	123.4 4.0	123.8 -0.7	129.8 12.1	36.9 34.5	109.8 -0.9	128.1 6.8	124.3 14.7	139.8 16.9	129.8 16.3				
ULT	120.9 0.5	112.5 -1.3	111.4 -2.5	114.4 -0.8	116.3 -0.8	118.5 1.3	106.9 2.6	107.2 2.1	109.6 2.7	111.0 3.9	113.7 5.2	115.0 6.2	111.4 -2.5	125.7 5.0	91.6 6.4	131.3 16.0
384	127.6 -5.2	122.6 -3.0	118.2 -1.5	122.8 -4.2	135.0 -3.0	115.8 -0.0	43.6 -24.8	95.9 -0.7	112.6 -13.9	116.3 -1.5	127.1 -3.7	132.6 3.3				
ULT	127.6 -5.2	125.1 -4.1	122.8 -3.3	122.8 -3.5	125.2 -3.4	123.7 -2.9	112.2 -4.4	110.2 -4.0	110.4 -5.3	111.0 -4.9	112.5 -4.8	114.2 -4.0	122.8 -3.3	124.5 -2.5	84.0 -11.7	125.3 -0.6
385	140.4 28.5	178.4 33.0	195.6 43.6	173.6 15.7	202.4 28.0	202.3 17.9	63.5 9.5	164.4 44.2	180.0 43.6	138.0 3.5	199.3 30.3	291.8 60.3				
ULT	140.4 28.5	159.4 31.0	171.5 35.5	172.0 29.9	178.1 29.5	182.1 27.1	165.2 26.0	165.1 28.0	166.7 29.7	163.9 27.0	167.1 27.4	177.5 31.1	171.5 35.5	192.8 20.5	136.0 37.2	209.7 34.4
390	89.2 -5.0	86.5 -10.8	113.1 9.9	137.4 7.3	131.5 1.6	137.7 1.2	33.1 23.6	108.1 1.5	120.4 5.1	137.5 13.2	157.8 17.0	110.9 12.7				
ULT	89.2 -5.0	87.9 -8.0	96.3 -1.7	106.6 1.0	111.5 1.2	115.9 1.2	104.1 2.0	104.6 2.0	106.3 2.3	109.4 3.6	113.8 5.1	113.6 5.7	96.3 -1.7	135.5 3.3	87.2 5.6	135.4 14.5
3	109.9 5.6	109.6 3.4	111.6 3.9	118.6 3.0	120.0 2.1	117.9 2.6	70.2 10.6	107.0 2.4	116.1 1.5	119.3 4.6	123.0 4.8	121.6 12.2				
ULT	109.9 5.6	109.8 4.5	110.4 4.3	112.4 4.0	113.9 3.6	114.6 3.4	108.3 4.0	108.1 3.8	109.0 3.5	110.0 3.7	111.2 3.8	112.1 4.5	110.4 4.3	118.8 2.6	97.7 3.9	121.3 7.1
410	127.6 12.1	125.8 3.9	123.1 9.1	109.5 6.1	102.2 7.7	88.8 -1.2	90.3 7.6	94.8 1.5	106.3 13.7	114.6 11.5	128.9 8.2	129.6 5.2				
ULT	127.6 12.1	126.7 7.9	125.5 8.3	121.5 7.8	117.6 7.8	112.8 6.5	109.6 6.6	107.8 6.0	107.6 6.8	108.3 7.3	110.2 7.4	111.8 7.2	125.5 8.3	100.2 4.3	97.1 7.6	124.4 8.1
420	103.9 -2.6	101.8 -1.9	104.0 1.8	109.3 4.0	106.8 4.5	100.9 3.9	87.3 -6.6	98.5 -3.6	103.7 0.5	100.3 -5.2	102.5 -1.4	112.3 7.5				
ULT	103.9 -2.6	102.9 -2.2	103.2 -0.9	104.8 0.3	105.2 1.1	104.5 1.6	102.0 0.5	101.6 -0.0	101.8 0.0	101.7 -0.5	101.7 -0.6	102.6 0.1	103.2 -0.9	105.7 4.1	96.5 -3.1	105.0 0.3
4	126.2 11.2	124.3 3.6	121.9 8.7	109.5 5.9	102.5 7.5	89.6 -0.9	90.1 6.6	95.1 1.1	106.1 12.8	113.8 10.5	127.3 7.6	128.5 5.3				
ULT	126.2 11.2	125.2 7.3	124.1 7.8	120.5 7.3	116.9 7.4	112.3 6.2	109.1 6.2	107.4 5.7	107.2 6.4	107.9 6.8	109.7 6.9	111.2 6.7	124.1 7.8	100.5 4.3	97.1 6.9	123.2 7.7
2, 3 ja 4	111.0 6.1	110.5 3.3	112.0 4.3	117.2 3.3	118.2 2.7	117.4 2.7	73.5 9.1	107.4 2.0	114.8 2.5	118.4 5.3	122.8 5.2	121.8 11.5				
ULT	111.0 6.1	110.8 4.7	111.2 4.6	112.7 4.2	113.8 3.9	114.4 3.7	108.5 4.2	108.4 3.9	109.1 3.7	110.0 3.9	111.2 4.0	112.1 4.7	111.2 4.6	117.6 2.9	98.6 3.9	121.0 7.3

TAULU 2:  
TEOLLISUUSTUOTANNON VOLYYMI-INDEKSI TYÖPÄIVÄÄ KOHTI V. 1984  
INDUSTRIPRODUKTIONS VOLYMINDEKX PER ARBETSDAG ÅR 1984

TOL NI	NELLJÄNNEKSET KVARTAL															
	TAMMI JAN	HELMI FEBR	MAALIS MARS	HUHTI APRIL	TOUKO MAJ	KESÄ JUNI	HEINÄ JULI	ELO AUG	SYYS SEPT	LOKA OKTOB	MARRAS NOVEMB	JOULU DEC	I	II	III	IV
331, 341 %	100.4 19.2	105.0 11.1	106.2 8.8	113.3 10.2	116.6 6.2	106.2 0.4	90.8 18.2	101.9 3.2	108.7 5.0	110.7 3.2	111.0 5.5	105.0 9.7				
ULT %	100.4 19.2	102.7 16.9	103.9 12.7	106.2 12.0	108.3 10.7	107.9 8.9	105.5 9.9	105.0 9.1	105.5 8.6	106.0 8.0	106.4 7.8	106.3 7.9	103.9 12.7	112.0 5.5	100.5 8.0	108.9 6.0
37 - 38 %	118.8 -0.1	119.0 0.2	120.4 4.6	126.7 -1.7	133.3 4.6	133.6 5.3	53.9 7.0	111.4 6.1	127.2 3.3	125.9 7.2	134.8 8.6	143.1 20.0				
ULT %	118.8 -0.1	118.9 0.0	119.4 1.5	121.2 0.7	123.6 1.5	125.3 2.2	115.1 2.5	114.6 2.9	116.0 2.9	117.0 3.4	118.6 3.9	120.7 5.3	119.4 1.5	131.2 2.7	97.5 5.0	134.6 11.9
Muu 3 %	108.6 4.7	105.2 2.4	108.1 1.0	115.5 3.5	112.2 -2.0	112.7 1.4	71.2 7.9	106.5 -0.5	111.9 -1.6	119.0 3.4	120.9 1.6	114.8 7.0				
ULT %	108.6 4.7	106.9 3.5	107.3 2.7	109.3 2.9	109.9 1.8	110.4 1.8	104.8 2.3	105.0 2.0	105.8 1.5	107.1 1.7	108.3 1.7	108.9 2.2	107.3 2.7	113.5 0.9	96.5 1.0	118.2 3.9
I %	125.0 2.0	127.2 3.4	129.4 8.2	133.0 -1.8	142.6 6.9	148.7 7.4	52.4 10.7	116.5 9.8	133.3 4.3	129.2 6.6	141.3 9.6	152.8 22.4				
ULT %	125.0 2.0	126.1 2.7	127.2 4.5	128.6 2.8	131.4 3.7	134.3 4.3	122.6 4.7	121.8 5.3	123.1 5.2	123.7 5.3	125.3 5.8	127.6 7.2	127.2 4.5	141.4 4.2	100.7 7.5	141.1 12.9
C %	107.2 4.6	104.9 1.9	105.2 1.1	110.1 2.5	107.4 -2.4	106.8 2.6	69.4 10.0	101.2 1.3	107.0 0.4	114.6 4.2	120.5 4.3	115.6 10.3				
ULT %	107.2 4.6	106.0 3.2	105.8 2.5	106.8 2.5	106.9 1.5	106.9 1.7	101.6 2.4	101.5 2.3	102.1 2.1	103.4 2.3	104.9 2.5	105.8 3.2	105.8 2.5	108.1 0.9	92.5 3.0	116.9 6.2
R %	110.2 7.6	110.0 3.8	112.0 4.9	117.6 4.6	118.9 4.0	116.8 1.6	79.0 8.3	108.6 0.8	115.1 2.9	118.0 5.5	120.4 4.6	119.1 9.7				
ULT %	110.2 7.6	110.1 5.7	110.7 5.4	112.4 5.2	113.7 4.9	114.2 4.4	109.2 4.7	109.1 4.2	109.8 4.1	110.6 4.2	111.5 4.3	112.1 4.7	110.7 5.4	117.7 3.4	100.9 3.5	119.2 6.5

TAULU 1:  
TEOLLISUUSTUOTANNON VUOLYMI-INDEKSI V. 1985  
(ENNAKKOTIETOJA)  
(FÖRHANDSUPPGIFTER)

TOI NI	NELJÄNNEKSET KVARTAL																			
	TAMMI JAN	HELMI FEBR	MAALIS MARS	HUHTI APRIL	TOUKO MAJ	KESÄ JUNI	HEINÄ JULI	ELO AUG	SYYS SEPT	LOKA OKTOB	MARRAS NOVEMB	JOULU DEC	I	II	III	IV				
230	%	147.8 34.7	126.3 22.8	114.4 6.0	117.1 19.4	110.9 21.6	102.4 13.5	101.7 12.7	91.6 -18.7	117.9 3.2	125.0 -2.7	102.4 -9.5	88.7 -17.2	113.1 7.9	112.2 6.3	129.5 21.2	110.1 18.2	103.7 -1.9	105.4 -9.3	
ULT	%	147.8 34.7	137.1 28.9	129.5 21.2	126.4 20.8	123.3 20.9	119.8 19.8	117.2 18.9	114.0 13.6	114.5 12.3	115.5 10.5	112.2 6.3	113.1 7.9	113.1 7.9	112.2 6.3	129.5 21.2	110.1 18.2	103.7 -1.9	105.4 -9.3	
290	%	59.8 10.1	58.3 31.4	63.9 48.0	50.5 9.2	92.1 -32.2	432.8 -5.3	574.7 90.8	282.1 -24.5	63.9 -0.8	61.7 12.2	51.8 17.2	60.1 18.0	60.1 18.0	51.8 17.2	61.7 12.2	60.1 18.0	60.1 18.0	60.1 18.0	60.1 18.0
ULT	%	59.8 10.1	59.1 19.7	60.7 28.3	58.1 23.6	64.9 0.2	126.2 -3.0	190.3 23.1	201.8 10.9	186.5 10.4	174.0 10.5	154.3 10.9	163.6 10.7	163.6 10.7	154.3 10.9	174.0 10.5	163.6 10.7	163.6 10.7	163.6 10.7	163.6 10.7
2	%	112.6 28.6	99.1 24.7	94.2 14.8	90.5 17.0	103.4 -5.2	234.6 -1.0	290.9 66.6	167.8 -22.7	96.3 2.1	99.7 0.6	82.2 -4.0	77.3 -8.7	77.3 -8.7	82.2 -4.0	99.7 0.6	77.3 -8.7	77.3 -8.7	77.3 -8.7	77.3 -8.7
ULT	%	112.6 28.6	105.8 26.7	102.0 22.8	99.1 21.4	99.9 14.8	122.4 9.2	146.5 21.0	149.1 12.1	143.3 11.3	138.9 10.5	129.0 8.5	133.3 9.3	133.3 9.3	129.0 8.5	138.9 10.5	133.3 9.3	133.3 9.3	133.3 9.3	133.3 9.3
311-2	%	106.3 5.0	91.8 0.6	106.8 6.5	109.3 10.3	115.2 -1.3	104.3 -0.3	103.8 6.3	114.8 -0.8	109.5 2.9	138.6 -2.0	104.7 1.3	130.4 -2.2	130.4 -2.2	104.7 1.3	138.6 -2.0	130.4 -2.2	130.4 -2.2	130.4 -2.2	130.4 -2.2
ULT	%	106.3 5.0	99.1 2.9	101.7 4.1	103.6 5.7	105.9 4.1	105.6 3.3	105.4 3.7	106.5 3.1	106.9 3.1	110.1 2.4	111.3 1.8	111.9 1.9	111.9 1.9	111.3 1.8	110.1 2.4	111.9 1.9	111.9 1.9	111.9 1.9	111.9 1.9
313	%	78.8 -11.1	79.5 -9.3	103.3 0.4	121.3 9.6	111.8 -9.5	125.9 -1.3	141.5 17.2	121.1 1.9	100.9 11.2	101.3 1.2	114.9 11.0	95.2 -4.6	95.2 -4.6	114.9 11.0	101.3 1.2	95.2 -4.6	95.2 -4.6	95.2 -4.6	95.2 -4.6
ULT	%	78.8 -11.1	79.2 -10.2	87.2 -6.3	95.7 -1.8	99.0 -3.6	103.4 -3.2	108.9 0.1	110.4 0.3	109.4 1.3	108.6 1.3	108.0 1.6	107.3 0.8	107.3 0.8	108.0 1.6	108.6 1.3	107.3 0.8	107.3 0.8	107.3 0.8	107.3 0.8
314	%	125.8 11.6	80.9 16.8	94.5 -4.7	83.9 -6.7	103.4 -16.3	105.2 -10.5	18.9 31.9	108.2 -5.4	98.6 -3.8	124.3 3.3	72.9 -1.1	117.1 3.8	117.1 3.8	72.9 -1.1	124.3 3.3	117.1 3.8	117.1 3.8	117.1 3.8	117.1 3.8
ULT	%	125.8 11.6	103.3 13.6	100.4 7.1	96.3 3.8	97.7 -1.2	98.9 -3.0	87.5 -2.2	90.1 -2.7	91.0 -2.8	94.4 -2.1	94.5 -1.4	96.4 -1.5	96.4 -1.5	94.4 -2.1	94.4 -2.1	96.4 -1.5	96.4 -1.5	96.4 -1.5	96.4 -1.5
321	%	82.7 -5.0	72.2 -17.5	81.3 -7.5	84.6 5.3	93.5 -0.1	78.3 -7.7	35.6 -13.9	90.5 -5.2	86.3 4.7	94.8 0.8	64.9 -5.5	88.4 -10.6	88.4 -10.6	64.9 -5.5	94.8 0.8	88.4 -10.6	88.4 -10.6	88.4 -10.6	88.4 -10.6
ULT	%	82.7 -5.0	77.5 -11.3	78.7 -10.0	80.2 -6.4	82.8 -5.1	82.8 -5.1	75.5 -6.1	77.3 -6.0	78.3 -4.8	80.0 -4.2	79.4 -4.9	80.7 -4.8	80.7 -4.8	79.4 -4.9	80.0 -4.2	80.7 -4.8	80.7 -4.8	80.7 -4.8	80.7 -4.8
322	%	127.6 -1.1	131.1 5.0	116.5 5.7	104.4 16.2	115.4 35.4	102.2 0.4	27.3 -49.4	107.6 -4.8	115.9 36.0	130.5 2.9	83.0 5.8	119.7 -5.1	119.7 -5.1	83.0 5.8	130.5 2.9	119.7 -5.1	119.7 -5.1	119.7 -5.1	119.7 -5.1
ULT	%	127.6 -1.1	129.3 1.9	125.1 3.1	119.9 5.7	119.0 10.4	116.2 8.8	103.5 4.3	104.0 3.0	105.3 6.2	107.8 5.8	106.8 4.7	108.9 4.6	108.9 4.6	107.8 5.8	107.8 5.8	108.9 4.6	108.9 4.6	108.9 4.6	108.9 4.6
323	%	113.0 -15.0	96.8 -16.6	113.9 -3.1	109.9 4.0	127.5 4.6	116.3 19.0	11.4 14.8	119.3 -10.1	115.3 2.2	137.0 -4.9	105.9 15.4	114.5 -16.7	114.5 -16.7	105.9 15.4	137.0 -4.9	114.5 -16.7	114.5 -16.7	114.5 -16.7	114.5 -16.7
ULT	%	113.0 -15.0	104.9 -15.8	107.9 -11.7	108.4 -8.2	112.2 -5.6	112.9 -2.1	98.4 -1.9	101.0 -3.2	102.0 -2.5	106.0 -2.8	106.7 -3.0	106.8 -4.4	106.8 -4.4	106.0 -2.8	106.0 -2.8	106.8 -4.4	106.8 -4.4	106.8 -4.4	106.8 -4.4
ULT	%	113.0 -15.0	104.9 -15.8	107.9 -11.7	108.4 -8.2	112.2 -5.6	112.9 -2.1	98.4 -1.9	101.0 -3.2	102.0 -2.5	106.0 -2.8	106.7 -3.0	106.8 -4.4	106.8 -4.4	106.0 -2.8	106.0 -2.8	106.8 -4.4	106.8 -4.4	106.8 -4.4	106.8 -4.4

TAULU 1:  
TEOLLISUUS- JA TUOTANTO-  
INDUSTRIIPRODUKTION VOLUMEINDEKSIT VUOSI 1985  
(ENNAKKO- JA VÄLIMÄÄRIT)

NELJÄNNEKSET  
KVARTALIT

TOL NI	TAMMI JAN	HELMI FEBR	MAALIS MARS	HUHTI APRIL	TOUKO MAJ	KESÄ JUNI	HEINÄ JULI	ELO AUG	SYYS SEPT	LOKA OKTOB	MARRAS NOVEMB	JOULU DEC	I	II	III	IV	
324	135.7 20.4	112.8 9.5	137.8 18.2	115.0 13.5	129.4 14.2	106.7 3.1	24.5 -19.9	127.1 9.7	117.4 22.4	128.5 -6.7	119.3 -7.3	97.4 9.8					
ULT	135.7 20.4	124.3 15.2	128.8 16.3	125.3 15.6	126.1 15.3	122.9 13.4	108.8 11.9	111.1 11.6	111.8 12.7	113.5 10.1	114.0 8.2	112.6 8.3	128.8 16.3	117.0 10.4	89.7 11.0	115.1 -2.8	
331	80.2 -14.8	79.0 -10.8	99.3 -1.0	108.8 4.8	118.4 -2.3	97.1 -7.3	41.1 -1.9	83.1 -7.7	96.5 -3.4	109.6 5.2	96.7 2.3	63.2 -3.4					
ULT	80.2 -14.8	79.6 -12.9	86.2 -8.7	91.8 -5.1	97.1 -4.4	97.1 -4.9	89.1 -4.7	88.4 -5.1	89.3 -4.9	91.3 -3.8	91.8 -3.2	89.4 -3.2	86.2 -8.7	108.1 -1.7	73.6 -4.8	89.8 2.0	
332	116.8 -7.1	87.1 -16.2	97.1 -5.0	113.5 8.0	131.9 -0.3	110.4 -3.4	27.3 27.4	123.9 -16.5	142.7 -0.2	118.8 -4.8	142.1 -4.4	97.6 7.7					
ULT	116.8 -7.1	101.9 -11.2	100.3 -9.3	103.6 -5.1	109.3 -4.0	109.4 -3.9	97.7 -3.0	101.0 -5.3	105.6 -4.6	106.9 -4.6	110.1 -4.6	109.1 -3.8	100.3 -9.3	118.6 1.2	98.0 -6.0	119.5 -1.5	
341	118.1 6.7	109.4 -2.5	122.3 4.0	104.6 2.2	107.4 -9.2	105.8 14.4	126.5 0.8	118.8 -0.0	112.0 -0.4	112.2 -10.7	116.8 -6.1	102.8 -7.2					
ULT	118.1 6.7	113.7 2.1	116.6 2.8	113.6 2.6	112.4 0.1	111.3 2.2	113.4 1.9	114.1 1.7	113.9 1.4	113.7 0.1	114.0 -0.5	113.1 -1.1	116.6 2.8	105.9 1.5	119.1 0.1	110.6 -8.0	
342	151.8 3.8	122.8 -2.5	135.8 2.4	132.0 5.6	138.1 4.4	102.0 -6.6	91.5 2.5	120.7 -3.1	134.4 3.1	144.5 1.9	133.3 -1.5	114.0 6.9					
ULT	131.8 3.8	127.3 0.7	130.1 1.3	130.6 2.3	132.1 2.8	127.1 1.4	122.0 1.5	121.8 0.9	123.2 1.2	125.4 1.3	126.1 1.0	125.1 1.4	130.1 1.3	124.0 1.6	115.5 0.7	130.6 2.1	
351	110.8 -5.1	113.0 3.1	128.4 5.0	130.9 3.4	118.5 2.3	100.1 1.8	85.6 3.9	124.6 3.2	122.5 6.4	121.3 -2.4	114.5 -4.5	112.8 0.4					
ULT	110.8 -5.1	111.9 -1.1	117.4 1.0	120.8 1.6	120.3 1.8	117.0 1.8	112.5 2.0	114.0 2.2	114.9 2.7	115.6 2.1	115.5 1.5	115.3 1.4	117.4 1.0	116.5 2.6	110.9 4.5	116.2 -2.2	
352	110.4 -0.0	104.5 5.4	120.7 -0.9	126.1 22.2	137.7 10.2	117.5 -0.3	65.3 13.0	116.6 11.7	118.7 7.3	137.0 9.9	121.3 -7.0	101.1 11.5					
ULT	110.4 -0.0	107.5 2.5	111.9 1.3	115.4 6.3	119.9 7.1	119.5 5.8	111.7 6.4	112.4 7.1	113.1 7.1	115.5 7.4	116.0 5.9	114.8 6.3	111.9 1.3	127.1 10.2	100.2 10.2	119.8 3.9	
353	100.0 -4.7	100.5 -1.8	108.2 1.3	97.2 -4.6	90.6 -4.5	75.8 -25.1	93.0 -1.3	90.7 44.2	95.6 32.4	100.9 17.1	97.1 6.0	105.5 8.8					
ULT	100.0 -4.7	100.3 -3.3	102.9 -1.7	101.5 -2.4	99.3 -2.8	95.4 -6.5	95.0 -5.8	94.5 -1.7	94.6 1.2	95.3 2.7	95.4 3.0	96.3 3.5	102.9 -1.7	87.9 -11.5	93.1 21.8	101.2 10.5	
354	95.8 -24.0	118.2 4.2	104.0 -3.4	134.0 14.9	130.9 -25.7	220.8 0.9	184.6 -19.1	199.6 -9.8	167.5 28.5	129.3 8.9	54.0 -28.2	103.0 4.8					
ULT	95.8 -24.0	107.0 -10.6	106.0 -8.4	113.0 -2.6	116.6 -8.9	133.9 -6.4	141.2 -9.1	148.5 -9.2	150.6 -5.8	148.5 -4.7	139.9 -5.8	136.8 -5.2	106.0 -8.4	161.9 -5.1	183.9 -4.9	95.4 -2.0	

TAULU 1:  
TEOLLISUUSTUANTON VOLYYMI-INDEKSI V. 1985  
INDUSTRIPRODUKTIONS VOLYMINDEKSI AR 1985

(ENNAKKOTIETOJA)  
(FÖRHANDSUPPGIFTER)

NELJÄNNEKSET  
KVARTAL

TOL NI	TAMMI JAN	HELMI FEBR	MAALIS MARS	HUHTI APRIL	TOUKO MAJ	KESÄ JUNI	HEINÄ JULI	ELG AUG	SYYS SEPT	LOKA OKTOB	MARRAS NOVEMB	JOULU DEC	I	II	III	IV	
355	99.8 -1.9	93.4 -4.6	97.8 12.9	127.6 22.3	98.5 -3.0	94.5 -6.4	8.8 0.8	136.4 13.2	108.6 22.9	120.9 19.5	132.2 -8.0	92.9 -8.2					
ULT	99.8 -1.9	96.6 -3.2	97.0 1.6	104.6 7.2	103.4 5.1	101.9 3.1	88.6 3.1	94.6 4.8	96.1 6.8	98.6 8.2	101.7 6.0	100.9 4.7	97.0 1.6	106.9 4.5	86.6 16.7	115.3 -0.0	
356	183.0 -2.3	141.2 18.3	164.3 -2.4	195.0 60.6	178.2 28.2	131.9 13.3	77.0 37.8	108.6 7.5	125.5 25.1	149.3 -11.0	140.6 7.8	132.6 13.7					
ULT	183.0 -2.3	162.1 5.8	162.8 2.9	170.9 14.6	172.3 17.2	165.6 16.6	152.9 17.9	147.4 16.9	145.0 17.6	145.4 13.9	145.0 13.3	143.9 13.3	162.8 2.9	168.4 34.0	103.7 20.9	140.8 1.8	
361	146.7 38.2	92.8 -14.7	123.1 4.9	86.5 -6.0	91.9 -4.3	97.6 -12.1	45.0 -38.1	92.4 0.1	107.7 8.3	111.8 1.5	108.9 -3.7	131.2 12.9					
ULT	146.7 38.2	119.8 11.4	120.9 9.1	112.3 5.8	108.2 4.0	106.5 1.1	97.7 -2.9	97.0 -2.6	98.2 -1.4	99.6 -1.0	100.4 -1.3	103.0 0.0	120.9 9.1	92.0 -7.7	81.7 -7.3	117.3 3.7	
362	82.1 -13.7	86.7 0.8	85.6 -11.7	67.0 -7.3	70.6 -3.6	59.2 -10.5	74.1 87.2	125.6 3.6	157.3 -7.3	120.6 -4.0	104.2 15.8	80.3 -15.0					
ULT	82.1 -13.7	84.4 -6.8	84.8 -8.5	80.4 -8.3	78.4 -7.5	75.2 -7.9	75.1 -0.8	81.4 0.0	89.8 -1.5	92.9 -1.8	93.9 -0.3	92.8 -1.5	84.8 -8.5	65.6 -7.0	119.0 8.1	101.7 -1.6	
369	110.3 6.0	86.2 -4.4	110.1 -1.4	109.7 5.8	136.3 5.1	125.8 -0.8	73.4 6.0	132.5 2.1	127.0 6.8	141.3 -2.3	122.9 -2.1	95.5 4.5					
ULT	110.3 6.0	98.3 1.2	102.2 0.2	104.1 1.6	110.5 2.5	113.1 1.9	107.4 2.2	110.5 2.2	112.4 2.8	115.3 2.1	116.0 1.7	114.3 1.9	102.2 0.2	123.9 3.2	111.0 4.7	119.9 -0.5	
371	128.9 9.8	113.3 -4.8	116.8 2.0	124.9 9.5	131.0 6.1	111.0 15.9	68.6 7.0	109.8 2.1	125.0 7.3	128.6 0.3	121.8 1.2	110.4 -0.7					
ULT	128.9 9.8	121.1 2.4	119.7 2.3	121.0 4.1	123.0 4.5	121.0 6.1	113.5 6.2	113.0 5.7	114.4 5.9	115.8 5.2	116.3 4.8	115.9 4.3	119.7 2.3	122.3 10.1	101.1 5.3	120.3 0.3	
372	140.2 0.8	123.0 -4.0	134.3 -5.8	146.8 3.5	139.3 -2.5	129.4 13.4	88.2 -15.3	122.8 -4.9	144.9 11.8	156.8 2.0	146.4 -2.6	132.0 -7.4					
ULT	140.2 0.8	131.6 -1.5	132.5 -3.0	136.1 -1.3	136.7 -1.6	135.5 0.5	128.8 -1.3	128.0 -1.7	129.9 -0.2	132.6 0.0	133.8 -0.2	133.7 -0.9	132.5 -3.0	138.5 4.2	118.7 -1.9	145.1 -2.6	
381	124.2 3.2	110.8 2.0	134.8 8.1	142.5 19.6	162.1 10.1	138.3 2.5	87.2 18.9	144.5 3.5	150.4 11.8	170.2 5.6	155.6 1.3	123.3 0.4					
ULT	124.2 3.2	117.5 2.7	123.3 4.6	128.1 8.4	134.9 8.8	135.4 7.7	128.6 8.7	130.5 7.9	132.8 8.4	136.5 8.0	138.2 7.3	137.0 6.8	123.3 4.6	147.6 10.4	127.4 10.0	149.7 2.6	
382	125.2 5.8	131.3 7.6	148.5 15.1	137.0 24.8	175.4 27.1	166.2 16.5	66.3 24.5	118.2 -2.1	124.0 3.6	151.9 16.2	135.5 -0.3	126.7 9.1					
ULT	125.2 5.8	128.2 6.7	135.0 9.6	135.5 13.1	143.5 16.3	147.3 16.3	135.7 16.8	133.5 14.4	132.4 13.2	134.4 13.5	134.5 12.1	133.8 11.8	135.0 9.6	159.5 22.6	102.8 5.0	138.1 8.2	

TAULU 1:  
TEOLLISUUSTUOTANNON VOLYYMI-INDEKSI V. 1985  
INDUSTRIPRODUKTIONS VOLYMINDEKSI ÅR 1985

(ENNAKKOTIETOJA)  
(FÖRHANDSUPPGIFTER)

NELJÄNNEKSET  
KVARTAL

TULNI	TAMMI JAN	HELMI FEBR	MAALIS MARS	HUHTI APRIL	TOUKO MAJ	KESÄ JUNI	HEINÄ JULI	ELO AUG	SYYS SEPT	LOKA OKTOB	MARRAS NOVEMB	JOULU DEC	I	II	III	IV	
383	142.1 12.8	120.7 16.4	139.6 22.3	140.6 26.9	155.7 20.7	134.3 9.3	57.7 49.6	135.0 12.8	154.0 26.1	165.3 22.0	166.1 14.0	129.3 23.1					
ULT	142.1 12.8	131.4 14.4	134.2 17.0	135.8 19.4	139.8 19.7	138.8 17.9	127.3 19.5	128.2 18.6	131.1 19.5	134.5 19.8	137.4 19.2	136.7 19.5	134.2 17.0	143.5 18.7	115.6 23.7	153.6 19.3	
384	125.3 -5.9	115.3 -5.5	118.5 -4.0	115.5 4.5	165.1 3.0	101.0 -8.3	55.8 22.8	97.7 -6.5	115.4 7.8	124.1 -2.1	120.2 -9.3	109.6 2.4					
ULT	125.3 -5.9	120.3 -5.7	119.7 -5.1	118.7 -2.9	124.0 -1.6	120.1 -2.6	110.9 -1.1	109.3 -1.8	110.0 -0.7	111.4 -0.9	112.2 -1.8	112.0 -1.4	119.7 -5.1	120.5 0.0	89.6 4.6	118.0 -3.4	
385	141.8 -3.2	160.9 -9.4	211.1 3.4	162.3 3.7	216.5 2.5	197.7 3.0	85.4 28.8	172.9 -3.6	200.5 17.4	176.9 17.5	258.2 24.2	204.9 -12.9					
ULT	141.8 -3.2	151.4 -6.6	171.3 -2.7	169.0 -1.3	178.5 -0.4	181.7 0.2	168.0 1.9	168.6 1.1	172.1 3.0	172.6 4.3	180.4 6.5	182.4 4.3	171.3 -2.7	192.2 3.0	152.9 10.2	213.4 7.8	
390	94.9 1.9	86.3 0.1	123.8 4.9	135.0 9.5	152.9 11.4	120.4 -7.8	37.0 7.3	115.2 -2.3	121.2 6.1	141.9 -5.4	147.3 -10.6	81.8 -8.5					
ULT	94.9 1.9	90.6 1.0	101.7 2.6	110.0 4.6	118.6 6.3	118.9 3.6	107.2 3.8	108.2 2.9	109.6 3.3	112.9 2.1	116.0 0.5	113.2 -0.1	101.7 2.6	136.1 4.4	91.2 2.5	123.7 -8.2	
3	116.0 1.5	107.8 -0.6	121.8 4.5	119.4 10.6	131.0 5.5	114.4 2.8	77.7 6.2	115.3 0.2	120.2 7.0	131.4 2.4	124.9 -1.5	105.4 2.5					
ULT	116.0 1.5	111.9 0.5	115.2 1.9	116.2 4.0	119.2 4.3	118.4 4.1	112.6 4.3	112.9 3.7	113.7 4.1	115.5 3.9	116.4 3.4	115.4 3.3	115.2 1.9	121.6 6.3	104.4 4.2	120.6 1.0	
410	157.3 20.8	142.1 18.4	132.0 5.2	123.0 15.1	112.7 8.5	100.6 16.9	90.4 -1.8	99.7 3.0	109.1 4.1	118.6 1.4	129.7 1.9	139.9 6.9					
ULT	157.3 20.8	149.7 19.7	143.8 14.8	138.6 14.9	133.4 13.8	128.0 14.2	122.6 12.2	119.7 11.2	118.6 10.4	118.6 9.5	119.6 8.7	121.3 8.5	143.8 14.8	112.1 13.3	99.7 1.9	129.4 3.5	
420	106.6 -0.3	99.0 0.2	114.4 7.0	107.2 3.5	112.2 2.1	98.5 0.7	97.6 8.7	104.3 0.9	101.8 1.4	106.3 0.9	101.7 -1.7	102.2 -1.6					
ULT	106.6 -0.3	102.8 -0.1	106.7 2.3	106.8 2.6	107.9 2.5	106.3 2.3	105.1 3.1	105.0 2.8	104.6 2.6	104.8 2.5	104.5 2.1	104.3 1.8	106.7 2.3	106.0 2.2	101.2 3.4	103.4 -0.8	
4	154.2 19.8	139.5 17.5	131.0 5.2	122.0 14.4	112.7 8.1	100.4 15.8	90.8 -1.2	100.0 2.9	108.7 3.9	117.9 1.4	128.0 1.7	137.6 6.5					
ULT	154.2 19.8	146.9 18.7	141.6 14.2	136.7 14.2	131.9 13.1	126.6 13.5	121.5 11.7	118.8 10.7	117.7 10.0	117.7 9.0	118.7 8.3	120.2 8.1	141.6 14.2	111.7 12.6	99.8 2.0	127.8 3.3	
2, 3 ja 4	119.4 3.7	110.5 1.5	122.2 4.7	119.2 11.1	128.9 5.6	115.0 3.6	82.2 7.5	114.8 -0.3	118.8 6.7	129.7 2.3	124.5 -1.3	108.0 2.9					
ULT	119.4 3.7	115.0 2.6	117.4 3.3	117.3 5.2	120.0 5.3	119.2 5.0	113.9 5.3	114.0 4.5	114.5 4.8	116.1 4.5	116.8 3.9	116.1 3.8	117.4 3.3	121.0 6.7	105.2 4.2	120.7 1.2	

TAULU 1:  
TEOLLISUUSTUOTANNON VOLYYMI-INDEKSI V. 1985 (ENNAKKOTIETOJA)  
INDUSTRIPRODUKTIONS VGLYINDEX ÅR 1985 (FÖRHANDSUPPGIFTER)

TOL NI	ENNAKKOTIETOJA (FÖRHANDSUPPGIFTER)												NELJÄNNEKSET KVARTAL			
	TAMMI JAN	HELMI FEBR	MAALIS MARS	HUHTI APRIL	TOUKO MAJ	KESÄ JUNI	HEINÄ JULI	ELG AUG	SYYS SEPT	LOKA OKTOB	MARRAS NOVEMB	JOULU DEC	I	II	III	IV
331, 341	104.3	98.3	113.9	106.1	111.4	102.6	95.4	105.8	106.4	111.2	109.5	88.4				
%	-0.3	-5.1	2.4	3.1	-6.6	5.8	0.3	-2.4	-1.4	-5.6	-3.5	-6.2				
ULT	104.3	101.3	105.5	105.7	106.8	106.1	104.6	104.7	104.9	105.5	105.9	104.4	105.5	106.7	102.5	103.0
%	-0.3	-2.7	-0.9	0.1	-1.4	-0.3	-0.2	-0.5	-0.6	-1.2	-1.4	-1.7	-0.9	0.3	-1.2	-5.0
37 - 38	129.0	121.7	136.7	134.0	159.2	137.8	68.0	121.9	134.1	149.9	142.5	123.6				
%	4.2	3.0	8.9	17.3	14.7	8.4	21.1	0.8	10.4	9.7	1.7	5.6				
ULT	129.0	125.3	129.1	130.3	136.1	136.4	126.6	126.0	126.9	129.2	130.4	129.9	129.1	143.7	108.0	138.7
%	4.2	3.6	5.4	8.2	9.7	9.5	10.3	9.0	9.2	9.3	8.5	8.2	5.4	13.4	8.5	5.6
Muu 3	112.8	102.7	115.1	115.8	120.8	103.7	75.5	115.6	117.4	128.7	120.3	101.2				
%	0.3	-1.3	2.2	9.3	4.1	-3.4	2.0	0.9	8.7	0.6	-3.2	4.3				
ULT	112.8	107.7	110.2	111.6	113.4	111.8	106.6	107.7	108.8	110.8	111.7	110.8	110.2	113.4	102.8	116.7
%	0.3	-0.4	0.4	2.6	2.9	1.9	1.9	1.8	2.5	2.3	1.8	1.9	0.4	3.3	4.0	0.3
I	134.0	131.7	148.8	141.5	174.9	153.5	68.4	125.9	137.4	157.4	148.9	130.9				
%	2.7	3.9	10.1	18.7	17.5	8.7	25.1	-0.9	8.4	11.7	1.0	6.7				
ULT	134.0	132.8	138.2	139.0	146.2	147.4	136.1	134.8	135.1	137.4	138.4	137.8	138.2	156.6	110.6	145.7
%	2.7	3.3	5.6	8.7	10.7	10.3	11.3	9.7	9.5	9.8	8.9	8.7	5.6	14.8	7.5	6.4
C	117.4	106.8	115.0	113.3	119.0	102.8	73.6	110.0	113.4	124.3	122.2	104.2				
%	5.7	3.2	5.0	12.5	7.1	1.1	2.2	1.0	10.0	2.6	-1.3	6.0				
ULT	117.4	112.1	113.1	113.1	114.3	112.4	106.9	107.2	107.9	109.8	110.9	110.3	113.1	111.7	99.0	117.6
%	5.7	4.5	4.6	6.5	6.6	5.7	5.4	4.8	5.4	5.1	4.4	4.5	4.6	6.9	4.6	2.2
R	117.5	108.2	120.6	117.7	125.2	113.8	88.5	114.7	117.7	124.1	120.9	105.4				
%	2.9	0.1	3.4	8.9	2.3	3.5	7.6	-0.9	4.8	0.3	-1.8	0.6				
ULT	117.5	112.9	115.4	116.0	117.8	117.2	113.1	113.3	113.8	115.0	115.5	114.7	115.4	118.9	107.0	117.4
%	2.9	1.5	2.2	3.8	3.5	3.5	3.9	3.3	3.5	3.1	2.6	2.5	2.2	4.8	3.4	-0.4

TAULU 2:  
TEOLLISUUSTUUTTANNON VÄLYYMI-INDEKSI TYÖPÄIVÄÄ KOHTI V. 1985  
INDUSTRIPRODUKTIONS VOLYMINDEKSI PER ARBETSDAG ÅR 1985

(ENNAKKOTIETOJA)  
(FÖRHANDSUPPGIFTER)

NELJÄNNEKSET  
KVARTAL

TUL NI	TAMMI JAN	Helmi FEBR	MAALIS MARS	HUHTI APRIL	Touko MAJ	KESÄ JUNI	HEINÄ JULI	ELG AUG	SYYS SEPT	LCKA OKTGB	MARRAS NOVEMB	JOULU DEC	I	II	III	IV
230	%	143.3	134.2	109.9	122.5	110.9	107.6	97.4	116.7	119.7	88.8	108.9				
		54.3	26.8	5.8	19.1	23.7	11.2	12.0	2.7	-3.1	-17.4	-9.3				
ULT	%	143.8	139.0	129.3	127.6	126.2	121.5	118.0	114.5	115.0	112.7	112.3	129.3	113.7	100.6	105.8
		34.3	30.6	22.4	21.6	22.0	20.2	19.2	12.7	10.8	8.1	6.5	22.4	17.9	-2.2	-9.6
290	%	57.4	61.7	63.1	52.4	88.6	476.0	535.4	64.0	57.8	60.1	58.2				
		9.7	36.1	51.4	6.1	-32.2	-1.6	84.4	-4.0	11.5	20.3	13.4				
ULT	%	57.4	59.5	60.7	58.6	64.6	133.2	190.6	185.5	172.8	162.5	153.8	60.7	205.7	290.3	58.7
		9.7	21.9	30.8	24.3	1.2	-0.5	22.1	10.7	10.7	11.0	11.1	30.8	-7.0	23.5	15.0
2	%	109.2	105.2	91.2	94.5	101.9	255.0	272.6	95.6	94.9	77.3	88.6				
		28.2	28.9	15.4	15.9	-3.8	1.4	62.0	0.8	0.1	-8.5	-4.2				
ULT	%	109.2	107.2	101.8	100.0	100.4	126.2	147.1	142.9	138.1	132.6	128.9	101.8	150.5	176.5	86.9
		28.2	28.5	24.3	22.2	15.9	10.5	20.7	11.6	10.8	9.5	8.6	24.3	2.8	13.3	-4.0
311-2	%	102.1	96.6	106.2	115.1	110.7	113.2	95.6	109.5	127.8	130.4	121.1				
		4.6	5.0	10.5	5.0	-1.5	3.8	1.8	-1.6	-2.4	1.0	-3.5				
ULT	%	102.1	99.3	101.6	105.0	106.1	107.3	105.6	106.5	108.6	110.6	111.5	101.6	113.0	104.9	126.4
		4.6	4.8	6.7	6.2	4.5	4.4	4.1	3.2	2.5	2.3	1.8	6.7	2.4	0.8	-1.6
313	%	75.3	83.5	103.0	128.5	106.7	138.6	129.1	100.8	92.7	95.1	134.5				
		-11.5	-5.2	4.6	4.0	-9.8	3.4	11.7	5.7	0.8	-0.6	4.8				
ULT	%	75.3	79.4	87.2	97.6	99.4	105.9	109.2	109.0	107.4	106.2	108.6	87.2	124.6	115.2	107.4
		-11.5	-8.3	-3.6	-1.2	-3.2	-1.9	0.2	1.4	1.3	1.2	1.5	-3.6	-0.6	7.9	2.0
314	%	119.6	84.6	94.1	89.6	98.3	115.8	17.2	98.2	113.1	116.6	87.4				
		11.2	22.2	-0.6	-11.8	-16.7	-6.1	25.6	-8.8	2.9	8.3	-7.1				
ULT	%	119.6	102.1	99.4	97.0	97.2	100.3	88.5	91.2	93.3	95.5	94.8	99.4	101.2	72.8	105.7
		11.2	15.5	9.9	4.0	-1.0	-2.0	-1.4	-2.4	-1.7	-0.7	-1.2	9.9	-11.4	-3.3	1.8
321	%	79.6	75.5	79.8	90.4	91.4	85.0	32.8	85.6	87.1	88.2	75.3				
		-5.4	-14.0	-4.6	1.0	0.8	-5.9	-16.9	0.8	0.4	-7.9	-9.5				
ULT	%	79.6	77.6	78.3	81.3	83.4	83.6	76.6	78.4	79.3	80.1	79.7	78.3	88.9	68.1	83.5
		-5.4	-9.8	-8.1	-5.7	-4.4	-4.6	-5.5	-4.4	-3.9	-4.3	-4.7	-8.1	-1.4	-3.8	-5.7
322	%	121.7	137.5	116.4	110.2	110.1	112.8	24.9	115.8	119.0	119.6	97.4				
		-1.5	9.8	10.3	10.0	35.0	5.2	-51.8	29.7	2.5	-1.0	-0.5				
ULT	%	121.7	129.6	125.2	121.4	119.2	118.1	104.8	105.8	107.1	108.2	107.3	125.2	111.0	81.1	112.0
		-1.5	4.2	6.0	6.9	11.2	10.2	5.6	7.2	6.7	5.9	5.4	6.0	15.3	-0.5	0.4
323	%	107.8	101.5	113.7	115.3	121.6	128.4	10.4	115.2	125.0	114.4	124.7				
		-15.3	-12.9	1.1	-1.6	4.2	24.7	9.4	-3.1	-5.2	-13.2	8.1				
ULT	%	107.8	104.7	107.7	109.6	112.0	114.7	99.8	103.1	105.3	106.1	107.7	107.7	121.8	79.8	121.4
		-15.3	-14.2	-9.3	-7.4	-5.1	-0.7	-0.6	-1.6	-2.1	-3.3	-2.3	-9.3	8.5	-4.2	-3.9



TAULU 2:

TEOLLISUUSTUOTTANNON VÖLYYMI-INDEKSI TYÖPÄIVÄÄ KOHTI V. 1985  
 INDUSTRIPRODUKTIONS VOLYMINDEKSI PER ARBETSDAG ÅR 1985

(ENNAKKOTIETOJA)  
 (FÖRHANDSUPPGIFTER)

NELJÄNNEKSET  
 KVARTAL

TOL NI	TAMMI JAN	HELMI FEBR	MAALIS MARS	HUHTI APRIL	TUUKO MAJ	KESÄ JUNI	HEINÄ JULI	ELO AUG	SYYS SEPT	LOKA OKTOB	MARRAS NOVEMB	JOULU DEC	I	II	III	IV	
324	129.6 19.9	118.4 14.6	137.8 23.4	120.8 7.4	123.5 13.8	117.9 8.1	22.4 -23.7	121.4 14.3	117.4 16.1	117.3 -7.1	119.3 -3.3	113.7 3.3	119.3	117.4	113.7	113.7	113.7
ULT	129.6	124.0	128.6	126.6	126.0	124.7	110.0	111.5	112.1	112.6	113.2	113.3	128.6	120.7	87.0	116.8	116.8
%	19.9	17.3	19.4	16.3	15.8	14.5	12.9	13.1	13.4	10.9	9.3	8.8	19.4	9.8	10.4	-2.6	-2.6
331	76.9 -15.2	82.5 -6.9	97.8 2.4	117.0 0.0	114.9 -1.5	105.7 -5.1	37.6 -5.7	78.8 -4.7	95.6 -7.3	100.2 4.8	96.3 5.8	74.3 -8.0	96.3	85.8	112.5	70.7	90.3
ULT	76.9	79.7	85.8	93.6	97.8	99.1	90.3	88.9	89.6	90.7	91.2	89.8	85.8	112.5	70.7	90.3	90.3
%	-15.2	-11.1	-6.4	-4.5	-3.8	-4.0	-4.1	-4.2	-4.6	-3.6	-2.8	-3.2	-6.4	-2.1	-6.1	-1.3	-1.3
332	111.4 -7.5	91.4 -12.3	97.1 -0.9	119.3 2.2	125.8 -0.7	121.8 1.3	24.9 21.3	118.2 -13.0	142.7 -5.3	108.5 -5.2	142.1 -0.3	114.1 1.3	114.1	100.0	122.3	95.3	121.6
ULT	111.4	101.4	100.0	104.8	109.0	111.1	98.8	101.3	105.9	106.1	109.4	109.8	100.0	122.3	95.3	121.6	121.6
%	-7.5	-9.7	-7.1	-4.6	-3.7	-2.8	-2.1	-3.9	-4.1	-4.2	-3.8	-3.3	-7.1	0.9	-6.9	-1.3	-1.3
341	112.7 6.4	115.3 0.8	117.2 4.3	112.6 1.2	111.7 -4.3	112.0 8.5	120.3 0.3	113.1 0.2	110.4 -1.3	106.2 -11.0	115.3 -5.8	109.7 -7.7	115.3	112.1	114.6	110.4	110.4
ULT	112.7	114.0	115.1	114.5	113.9	113.6	114.5	114.4	113.9	113.2	113.4	113.1	115.1	112.1	114.6	110.4	110.4
%	6.4	3.5	3.8	3.1	1.0	2.7	2.3	2.0	1.7	0.5	-0.3	-0.9	3.8	1.5	-0.2	-6.1	-6.1
342	126.9 3.5	128.4 1.5	132.6 5.2	138.5 1.7	136.1 5.6	110.2 -5.1	84.3 -0.9	114.3 -0.9	133.1 -0.1	153.2 1.5	133.3 0.9	133.7 3.0	133.3	128.3	110.6	133.4	133.4
ULT	126.9	127.6	129.3	131.6	132.5	128.8	122.4	121.4	122.7	123.8	124.6	125.4	129.3	128.3	110.6	133.4	133.4
%	3.5	2.5	3.4	2.9	3.5	2.2	1.8	1.5	1.3	1.3	1.3	1.4	3.4	0.9	-0.6	1.8	1.8
351	108.3 -5.4	121.0 6.7	125.2 5.5	135.3 2.2	116.9 3.0	104.2 1.4	82.3 2.9	120.5 3.8	122.8 5.2	116.6 -2.6	115.2 -4.0	116.8 -0.5	115.2	118.8	108.6	116.2	116.2
ULT	108.3	114.6	118.2	122.4	121.3	118.5	113.3	114.2	115.2	115.3	115.3	115.4	118.2	118.8	108.6	116.2	116.2
%	-5.4	0.6	2.3	2.3	2.4	2.3	2.3	2.5	2.8	2.3	1.7	1.5	2.3	2.2	4.1	-2.4	-2.4
352	105.4 -0.4	109.7 10.1	120.5 3.4	132.6 15.7	131.2 9.8	129.6 4.5	59.7 7.7	111.2 16.2	118.0 2.0	125.5 9.5	121.1 -3.1	118.5 4.9	118.5	131.1	96.5	121.7	121.7
ULT	105.4	107.6	111.9	117.1	119.9	121.5	112.7	112.5	113.2	114.4	115.0	115.3	111.9	131.1	96.5	121.7	121.7
%	-0.4	4.7	4.2	7.2	7.8	7.2	7.2	8.3	7.5	7.7	6.6	6.4	4.2	9.8	8.3	3.6	3.6
353	98.1 -4.9	109.2 1.4	106.1 1.0	98.5 -4.9	88.9 -4.7	76.9 -25.3	91.2 -1.6	89.0 43.9	97.0 32.1	99.0 16.8	98.5 5.7	103.5 8.5	103.5	88.1	92.4	100.3	100.3
ULT	98.1	103.7	104.5	103.0	100.2	96.3	95.6	94.7	95.0	95.4	95.7	96.3	104.5	88.1	92.4	100.3	100.3
%	-4.9	-1.7	-0.8	-1.8	-2.3	-6.2	-5.6	-1.6	1.3	2.7	3.0	3.5	-0.8	-11.8	21.6	10.1	10.1
354	91.4 -24.3	124.0 9.0	104.0 0.8	141.2 8.6	124.9 -26.0	244.0 5.9	168.4 -22.9	190.4 -6.1	167.4 21.9	118.0 8.4	53.9 -25.0	120.4 -1.3	120.4	104.5	88.1	92.4	100.3
ULT	91.4	107.7	106.5	115.1	117.1	138.2	142.6	148.5	150.6	147.4	138.9	137.3	106.5	170.0	175.4	97.4	97.4
%	-24.3	-8.1	-5.4	-1.5	-8.0	-4.3	-8.1	-7.8	-4.9	-4.0	-4.9	-4.6	-5.4	-3.6	-5.8	-3.5	-3.5

TAULU 2:  
TEOLLISUUSUUTUONTANNON VOLYYMI-INDEKSI TYÖPAIVAA KUHTI V-1985  
INDUSTRIPRODUKTIONS VOLYMINDEKSI PER ARBETSDAG ÅR 1985

TUL NI	(ENNAKKOTIETOJA) (FÖRHANDSUPPGIFTER)												NELJÄNNEKSET KVARTAL				
	TAMMI JAN	HELMI FEB	MAALIS MAR	HUHTI APRIL	TOUKU MAJ	KESA JUNI	HEINÄ JULI	ELO AUG	SYYS SEPT	LOKA OKTOB	MARRAS NOVEMB	JOULU DEC	I	II	III	IV	
355	%	95.3 -2.3	98.1 -0.2	97.8 17.8	134.3 15.7	93.2 -3.5	104.5 -1.8	8.0 -3.9	130.2 17.9	108.7 16.6	110.5 19.0	132.2 -4.0	108.6 -13.6				
ULT	%	95.3 -2.3	96.7 -1.3	97.1 4.4	106.4 7.7	103.7 5.5	103.9 4.2	90.2 4.1	95.2 6.2	96.7 7.4	98.1 8.6	101.2 7.0	101.8 4.7	97.1 4.4	110.7 4.0	82.3 16.5	117.1 -1.4
356	%	174.9 -2.6	148.9 23.2	161.9 0.2	202.5 55.2	175.8 30.2	143.3 13.3	72.0 34.4	103.8 9.6	125.0 21.3	138.8 -11.2	140.2 10.8	150.2 8.7				
ULT	%	174.9 -2.6	161.9 7.8	161.9 5.1	172.0 16.1	172.8 18.8	167.9 17.9	154.2 18.9	147.9 18.0	145.3 18.3	144.7 14.7	144.3 14.3	144.8 13.8	161.9 5.1	173.9 33.1	100.3 19.7	143.1 1.9
361	%	140.7 37.7	97.9 -10.8	123.7 9.5	91.2 -11.0	86.0 -7.0	105.3 -5.5	41.3 -41.0	88.6 4.3	108.2 2.7	102.5 1.2	109.3 0.5	153.7 6.3				
ULT	%	140.7 37.7	119.3 12.6	120.8 11.5	113.4 6.1	107.9 3.8	107.5 2.1	98.0 -2.2	120.6 4.4	157.5 -8.8	114.3 -4.2	104.4 16.8	104.0 -17.0	120.8 11.5	94.2 -7.8	79.4 -8.5	121.9 3.0
362	%	79.8 -13.9	92.0 4.8	83.5 -10.4	68.8 -9.0	69.6 -3.3	62.5 -9.6	70.7 84.7	81.0 0.5	89.5 -1.5	91.9 -1.8	93.1 -0.2	92.6 -1.7	85.1 -6.7	67.0 -7.3	116.3 6.9	101.9 -2.5
ULT	%	79.8 -13.9	91.3 -0.4	108.9 1.3	115.5 2.2	130.9 4.6	134.9 2.2	68.8 3.0	127.2 4.6	127.1 3.2	131.9 -2.7	123.0 0.6	105.8 -0.4	102.1 2.2	127.1 3.0	107.7 3.7	120.2 -0.9
371	%	124.5 9.4	120.3 -1.2	114.6 3.2	132.6 7.4	127.8 6.7	116.3 16.3	66.7 4.8	106.0 4.0	124.3 4.3	121.2 -0.1	122.4 3.4	119.2 -3.7				
ULT	%	124.5 9.4	122.4 3.9	119.8 3.7	123.0 4.7	124.0 5.1	122.7 6.7	114.4 6.6	113.4 6.3	114.6 6.0	115.2 5.3	115.9 5.1	116.2 4.3	119.8 3.7	125.6 9.8	98.3 4.3	120.9 -0.2
372	%	136.7 0.4	132.5 -0.4	132.9 -4.7	150.9 1.6	135.8 -2.8	133.1 14.9	84.9 -16.8	119.8 -3.8	146.7 9.7	150.7 1.7	148.1 -1.4	134.5 -9.0				
ULT	%	136.7 0.4	134.6 0.0	134.0 -1.6	138.3 -0.7	137.8 -1.1	137.0 1.1	129.6 -0.9	128.3 -1.2	130.4 0.0	132.4 0.2	133.8 0.1	133.9 -0.8	134.0 -1.6	140.0 3.9	117.1 -2.5	144.4 -2.9
381	%	118.4 2.8	116.1 6.7	134.5 12.7	151.1 13.3	154.6 9.7	152.3 7.4	79.5 13.4	137.7 7.7	150.1 6.1	155.2 5.2	155.4 5.7	145.4 -5.6				
ULT	%	118.4 2.8	117.3 4.7	123.0 7.5	130.0 9.1	134.9 9.2	137.8 8.9	129.5 9.3	130.5 9.1	132.7 8.7	134.9 8.3	136.8 8.0	137.5 6.6	123.0 7.5	152.6 10.0	122.5 8.2	152.0 1.6
382	%	119.3 5.4	137.7 12.6	148.3 20.1	144.6 18.1	167.3 26.6	183.5 22.2	60.4 18.6	112.7 1.9	123.8 -1.7	138.5 15.8	135.4 4.1	149.1 2.6				
ULT	%	119.3 5.4	128.5 9.1	135.1 12.9	137.5 14.2	143.4 16.9	150.1 17.9	137.3 18.0	134.2 16.0	133.1 13.9	133.6 14.1	133.8 13.1	135.1 12.1	135.1 12.9	165.1 22.4	99.0 3.3	141.0 7.1

TAULU 2:

TEOLLISUUSTUOTANNON VÖLTYMI-INDEKSI TYÖPÄIVÄÄ KOHTI V.1985  
(ENNAKKOTIETOJA)  
(FÖRHANDSUPPGIFTER)

NELJÄNNEKSET  
KVARTAL

TOL NI	TAMMI JAN	HELVII FEBR	MAALIS MARS	HUHTI APRIL	TÖUKO MAJ	KESA JUNI	HEINÄ JULI	ELG AUG	SYYS SEPT	LOKA UKTÖB	MARRAS NOVEMB	JOULU DEC	I	II	III	IV	
383	%	135.8	126.6	139.1	148.5	149.4	147.7	52.8	128.7	153.7	166.0	150.7	166.0	150.7	151.1	151.1	151.1
	%	12.4	21.6	27.3	20.3	20.6	13.8	43.0	17.2	20.0	18.7	16.2	18.7	16.2	21.5	21.5	21.5
ULT	%	135.8	131.2	133.8	137.5	139.9	141.2	128.6	128.6	131.4	136.3	137.5	133.8	148.5	133.8	148.5	111.7
	%	12.4	16.7	20.1	20.2	20.3	19.1	20.3	19.9	19.9	19.9	19.6	20.1	18.2	20.1	18.2	22.0
384	%	119.6	121.1	118.3	121.6	138.5	111.1	51.1	93.2	115.3	120.2	127.9	120.2	127.9	113.5	113.5	113.5
	%	-6.3	-1.2	0.1	-0.9	2.6	-4.1	17.3	-2.8	2.4	-5.5	-3.5	-5.5	-3.5	-2.5	-2.5	-3.8
ULT	%	119.6	120.4	119.7	120.2	123.9	121.7	111.6	109.3	110.0	111.2	112.6	119.7	123.8	110.4	119.7	86.6
	%	-6.3	-3.8	-2.5	-2.1	-1.1	-1.6	-0.5	-0.8	-0.4	-1.1	-1.3	-2.5	-0.6	-0.6	-2.5	-3.8
385	%	135.3	169.0	211.1	170.4	206.7	218.5	78.0	165.0	200.5	258.2	239.0	258.2	239.0	161.5	161.5	161.5
	%	-3.6	-5.3	7.9	-1.9	2.1	8.0	22.7	0.3	11.4	29.6	-18.1	29.6	-18.1	17.0	17.0	17.0
ULT	%	135.3	152.2	171.8	142.3	145.9	133.1	33.8	109.9	121.2	147.2	95.5	147.2	95.5	129.5	129.5	129.5
	%	-3.6	-4.5	0.2	-0.3	0.2	1.7	2.8	1.7	0.6	-6.7	-13.9	-6.7	-13.9	-5.8	-5.8	-5.8
390	%	90.5	90.6	123.7	142.3	145.9	133.1	33.8	109.9	121.2	147.2	95.5	147.2	95.5	129.5	129.5	129.5
	%	1.5	4.7	9.5	3.5	11.0	-3.4	2.3	1.7	0.6	-6.7	-13.9	-6.7	-13.9	-5.8	-5.8	-5.8
ULT	%	90.5	90.6	101.6	111.8	118.6	121.0	108.6	108.7	110.1	115.3	113.6	101.6	160.4	112.1	115.3	88.3
	%	1.5	3.1	5.6	4.9	6.3	4.4	4.3	4.0	3.6	1.2	0.0	5.6	3.6	2.4	3.6	1.3
3	%	111.2	113.4	120.1	126.2	127.4	124.0	72.4	110.1	119.7	124.7	119.7	124.7	119.7	121.6	121.6	121.6
	%	1.2	3.5	7.6	6.4	6.2	5.2	3.1	2.9	3.2	1.4	-1.6	1.4	2.0	2.0	2.0	2.0
ULT	%	111.2	112.3	114.9	117.7	119.7	120.4	113.5	113.1	113.8	115.5	115.9	114.9	125.9	114.6	115.9	100.7
	%	1.2	2.3	4.1	4.7	5.0	5.0	4.9	4.6	4.5	3.9	3.4	4.1	4.2	4.2	3.9	3.1
410	%	153.8	153.8	129.1	125.6	111.2	103.0	88.3	97.4	110.3	131.0	138.1	131.0	138.1	116.0	116.0	116.0
	%	20.5	22.3	4.9	14.7	8.9	15.9	-2.1	2.7	3.8	1.7	6.6	1.7	6.6	1.2	1.2	1.2
ULT	%	153.8	153.8	145.6	140.6	134.7	129.4	123.5	120.3	119.2	120.0	121.5	145.6	113.3	118.9	120.0	128.4
	%	20.5	21.4	16.0	15.7	14.5	14.7	12.7	11.6	10.8	8.9	8.7	16.0	13.1	9.8	8.9	3.2
420	%	103.3	105.9	113.2	110.4	108.7	103.6	92.7	101.1	102.5	102.5	107.8	102.5	107.8	100.9	102.5	107.8
	%	-0.6	4.0	8.8	1.0	1.8	2.6	6.2	2.6	-1.1	0.0	-4.0	0.0	0.6	0.6	0.0	-4.0
ULT	%	103.3	104.6	107.5	108.2	108.3	107.5	105.4	104.9	104.6	104.1	104.4	107.5	107.6	104.2	104.1	98.8
	%	-0.6	1.7	4.1	3.3	3.0	2.9	3.3	3.2	2.8	2.3	1.7	4.1	1.8	2.5	2.3	2.4
4	%	150.7	150.9	128.1	124.7	111.1	103.0	88.6	97.7	109.8	115.1	136.3	115.1	136.3	115.1	115.1	115.1
	%	19.4	21.4	5.1	13.9	8.4	15.0	-1.6	2.7	3.5	1.1	6.1	1.1	6.1	1.1	1.1	1.1
ULT	%	150.7	150.8	143.3	138.6	133.1	128.1	122.4	119.3	118.3	119.0	120.4	143.3	112.9	118.0	119.0	126.9
	%	19.4	20.4	15.4	15.1	13.9	14.0	12.2	11.1	10.3	8.5	8.3	15.4	12.3	9.3	8.5	3.0
2, 3 ja 4	%	114.8	116.7	120.4	125.5	125.5	124.1	77.0	109.8	118.5	124.4	120.7	118.5	124.4	120.6	124.4	120.7
	%	3.4	5.6	7.4	7.1	6.2	5.7	4.7	2.2	3.2	1.3	-0.9	1.3	1.9	1.9	1.3	-0.9
ULT	%	114.3	115.7	117.3	119.3	120.6	121.2	114.9	114.2	114.7	116.1	116.5	117.3	125.1	115.3	116.1	101.7
	%	3.4	4.5	5.5	5.9	6.0	5.9	5.8	5.4	5.1	4.4	3.9	5.5	6.4	4.8	4.4	0.7

TAULU 2:

TEOLLISUUSTUOTANNON VOLYYMI-INDEKSI TYÖPÄIVÄÄ KOHTI V. 1985  
INDUSTRIPRODUKTIONS VOLYMINDEKX PER ARBEITSDAG ÅR 1985

(ENNAKKOTIETOJA)  
(FÖRHANDSUPPGIFTER)

NELJÄNNEKSET  
KVARTAL

TOL NI	TAMMI JAN	HELMI FEBR	MAALIS MARS	HUHTI APRIL	TOUKO MAJ	KESÄ JUNI	HEINA JULI	ELO AUG	SYYS SEPT	LOKA OKTOB	MARRAS NOVEMB	JUULU DEC	I	II	III	IV
331, 341 %	99.7 -0.7	103.4 -1.6	110.1 3.7	114.2 0.8	112.8 -3.3	109.7 3.3	90.2 -0.7	100.6 -1.3	105.0 -3.4	104.1 -6.0	108.4 -2.4	96.8 -7.8				
ULT %	99.7 -0.7	101.5 -1.1	104.4 0.5	106.8 0.6	108.0 -0.2	108.3 0.3	105.7 0.2	105.1 0.0	105.1 -0.4	105.0 -0.9	105.3 -1.1	104.6 -1.6	104.4 0.5	112.2 0.2	98.6 -1.8	103.1 -5.3
37 - 38 %	123.3 3.8	127.9 7.5	136.2 13.1	141.5 11.7	152.4 14.4	150.9 13.0	62.5 16.0	116.5 4.6	133.9 5.3	137.5 9.2	142.5 5.7	143.0 -0.1				
ULT %	123.3 3.8	125.6 5.7	129.1 8.2	132.2 9.1	136.3 10.2	138.7 10.7	127.8 11.1	126.4 10.3	127.2 9.7	128.3 9.6	129.6 9.2	130.7 8.3	129.1 8.2	148.3 13.0	104.3 7.0	141.0 4.8
Muu 3 %	108.5 -0.1	108.2 2.9	113.7 5.2	121.4 5.1	117.1 4.3	112.1 -0.5	70.3 -1.3	110.5 3.8	117.2 4.7	119.3 0.3	120.5 -0.3	114.8 -0.1				
ULT %	108.5 -0.1	108.4 1.4	110.1 2.7	113.0 3.3	113.8 3.5	113.5 2.8	107.3 2.4	107.7 2.6	108.8 2.8	109.8 2.6	110.8 2.3	111.1 2.1	110.1 2.7	116.8 3.0	99.3 2.9	118.2 -0.0
I %	127.9 2.3	138.1 8.6	148.5 14.8	149.4 12.4	167.0 17.1	169.1 13.8	62.5 19.3	120.1 3.1	137.2 2.9	143.7 11.2	148.7 5.3	153.5 0.5				
ULT %	127.9 2.3	133.0 5.5	138.2 8.6	141.0 9.6	146.2 11.2	150.0 11.7	137.5 12.2	135.3 11.1	135.5 10.1	136.4 10.2	137.5 9.7	138.8 8.8	138.2 8.6	161.9 14.5	106.6 5.8	148.7 5.4
C %	112.9 5.3	112.9 7.6	113.7 8.1	118.8 8.0	115.1 7.2	111.3 4.1	68.6 -1.1	105.2 3.9	113.3 5.9	117.1 2.2	122.4 1.6	117.4 1.6				
ULT %	112.9 5.3	112.9 6.4	113.2 7.0	114.6 7.2	114.7 7.2	114.1 6.7	107.6 6.0	107.3 5.7	108.0 5.7	108.9 5.3	110.1 4.9	110.7 4.6	113.2 7.0	115.1 6.5	95.7 3.4	119.0 3.8
R %	113.0 2.6	114.4 4.1	118.3 5.6	124.2 5.6	122.9 3.4	122.1 4.6	83.3 5.4	109.9 1.2	117.3 1.9	117.8 -0.2	120.7 0.3	116.2 -2.4				
ULT %	113.0 2.6	113.7 3.3	115.2 4.1	117.5 4.5	118.6 4.3	119.2 4.3	114.0 4.4	113.5 4.0	113.9 3.8	114.3 3.3	114.9 3.0	115.0 2.6	115.2 4.1	123.1 4.5	103.5 2.5	118.2 -0.8

TAULU 1:  
TEOLLISUUSTUANTONN VOLYYMI-INDEKSI V. 1986 (ENNAKKOTIETOJA)  
INDUSTRIPRODUKTIONS VOLYMINDEKX ÅR 1986 (FÖRHANDSUPPGIFTER)

NELJÄNNEKSET  
KVARTAL

I II

TOL NI	TAMMI JAN	HELMI FEBR	MAALIS MARS	HUHTI APRIL	TOUKO MAJ	KESÄ JUNI	
230	115.4 -21.9	93.6 -25.9	99.4 -13.2	94.9 -19.0	91.5 -17.5	97.7 -4.6	102.8 -20.6
ULT	115.4	104.5	102.8	100.8	99.0	98.8	94.7 -14.0
%	-21.9	-23.7	-20.6	-20.2	-19.7	-17.6	
290	66.7 11.5	48.6 -16.7	46.9 -26.7	48.2 -4.6	81.1 -12.0	85.0 96.4	54.0 -10.9
ULT	66.7	57.6	54.0	52.6	58.3	190.2	326.4 70.2
%	11.5	-2.4	-10.9	-9.6	-10.2	50.7	
2	95.9 -14.8	75.6 -23.7	78.4 -16.8	76.2 -15.8	87.3 -15.5	398.7 70.0	83.3 -18.3
ULT	95.9	85.8	83.3	81.5	82.7	135.4	187.6 31.2
%	-14.8	-19.0	-18.3	-17.7	-17.3	10.6	
311-2	106.8 0.4	93.1 -1.4	91.3 -14.6	114.4 4.6	104.6 -9.2	105.0 0.7	97.0 -4.5
ULT	106.8	99.9	97.0	101.4	102.0	102.5	108.0 -1.5
%	0.4	0.9	-4.5	-2.1	-3.7	-2.9	
313	89.2 13.1	86.0 8.2	105.8 2.5	118.7 -2.2	112.2 0.3	146.9 16.8	93.7 7.4
ULT	89.2	87.6	93.7	99.9	102.4	109.8	125.9 5.2
%	13.1	10.6	7.4	4.4	3.5	6.2	
316	111.9 -11.0	73.7 -8.8	87.3 -7.6	105.9 26.2	106.0 2.6	118.2 12.4	91.0 -9.4
ULT	111.9	92.8	91.0	94.7	97.0	100.5	110.1 12.9
%	-11.0	-10.2	-9.4	-1.6	-0.7	1.6	
321	78.6 -4.9	75.7 4.8	71.6 -11.8	88.5 4.7	85.4 -8.7	78.8 0.6	75.3 -4.3
ULT	78.6	77.1	75.3	78.6	80.0	79.8	84.2 -1.4
%	-4.9	-0.4	-4.3	-2.0	-3.5	-2.8	
322	133.3 4.5	123.0 -6.2	100.0 -14.2	113.1 8.3	102.8 -10.9	102.8 0.5	118.8 -5.0
ULT	133.3	128.2	118.8	117.4	114.4	112.5	106.2 -1.0
%	4.5	-0.9	-5.0	-2.1	-3.8	-3.2	
323	109.6 -3.0	99.8 3.1	91.9 -19.3	118.5 7.8	108.7 -14.8	97.8 -15.9	100.4 -6.9
ULT	109.6	104.7	100.4	104.9	105.7	104.4	108.3 -8.1
%	-3.0	-0.2	-6.9	-3.2	-5.8	-7.5	

TAULU 1:  
TEOLLISUUSTUOTANNON VOLYYMI-INDEKSI V. 1986  
INDUSTRIPRODUKTIONS VOLYMINDEKSI ÅR 1986

TOL NI	(ENNAKKOTIETOJA) (FORHANDSUPPGIFTER)												NELJÄNNEKSET KVARTAL	
	TAMMI JAN	HELMI FEBR	MAALIS MARS	HUHTI APRIL	TOUKO MAJ	KESÄ JUNI							I	II
324	169.9	117.5	125.0	126.9	110.1	99.9								
	25.2	4.2	-9.3	10.3	-14.9	-6.4								
ULT	169.9	143.7	137.5	134.8	129.9	124.9							137.5	112.3
	25.2	15.7	6.8	7.6	3.0	1.6							6.8	-4.1
331	93.6	82.9	83.6	113.5	100.1	98.0								
	16.7	4.9	-15.9	4.3	-15.5	1.0								
ULT	93.6	88.2	86.7	93.4	94.7	95.3							86.7	103.9
	16.7	10.8	0.6	1.7	-2.5	-1.9							0.6	-3.9
332	124.3	93.4	77.1	125.3	118.2	117.4								
	6.5	7.3	-20.6	10.4	-10.3	6.3								
ULT	124.3	108.9	98.3	105.0	107.7	109.3							98.3	120.3
	6.5	6.8	-2.0	1.4	-1.5	-0.1							-2.0	1.4
341	111.2	102.2	95.2	114.7	107.4	101.5								
	-5.9	-6.6	-22.2	9.6	0.0	-4.1								
ULT	111.2	106.7	102.9	105.8	106.1	105.4							102.9	107.9
	-5.9	-6.2	-11.8	-6.9	-5.5	-5.3							-11.8	1.8
342	123.0	130.3	127.0	144.7	135.3	112.1								
	-2.9	6.2	-6.5	9.6	-2.0	9.9								
ULT	128.0	129.1	128.4	132.5	133.0	129.6							128.4	130.7
	-2.9	1.5	-1.3	1.4	0.7	1.9							-1.3	5.4
351	121.3	108.5	123.2	127.5	113.2	109.2								
	9.4	-4.0	-4.0	-2.6	-0.3	9.1								
ULT	121.3	114.9	117.7	120.1	119.8	118.0							117.7	118.3
	9.4	2.7	0.2	-0.5	-0.5	0.9							0.2	1.5
352	122.8	114.9	119.6	142.7	126.7	121.1								
	11.3	9.9	-0.9	13.1	-8.0	3.1								
ULT	122.8	118.8	119.1	125.0	125.3	124.6							119.1	130.2
	11.3	10.6	6.5	8.3	4.5	4.3							6.5	2.4
353	113.3	110.7	108.1	44.9	38.3	45.6								
	13.4	10.1	-0.1	-53.8	-57.7	-39.8								
ULT	113.3	112.0	110.7	94.3	83.1	76.8							110.7	42.9
	13.4	11.7	7.6	-7.1	-16.3	-19.5							7.6	-51.1
354	118.3	104.1	69.7	143.7	120.5	283.9								
	23.5	-11.9	-33.0	7.3	-7.9	28.6								
ULT	118.3	111.2	97.4	109.0	111.3	140.0							97.4	182.7
	23.5	4.0	-8.1	-3.6	-4.5	4.6							-8.1	12.9

TAULU 1:  
TEOLLISUUSTUANTONN VOLYYMI-INDEKSI V. 1986  
INDUSTRIPRODUKTIONS VOLYMINDEKX AR 1986

NELJÄNNEKSET  
KVARTAL

(ENNAKKOTIETOJA)  
(FÖRHANDSUPPGIFTER)

TOL NI	TAMMI JAN	HELMI FEBR	MAALIS MARS	HUHTI APRIL	TUUKO MAJ	KESÄ JUNI	I	II
355	103.0 3.3	86.3 -7.6	81.6 -16.5	118.7 -7.0	109.1 10.7	108.9 15.3		
ULT	103.0	94.7	90.3	97.4	99.7	101.3	90.3	112.2
%	3.3	-2.0	-6.9	-6.9	-3.5	-0.6	-6.9	5.0
356	169.5 -7.4	164.1 16.2	171.5 4.4	193.4 -0.8	183.3 2.8	177.2 34.3		
ULT	169.5	166.8	168.3	174.6	176.3	176.5	168.3	184.6
%	-7.4	2.9	3.4	2.2	2.3	6.6	3.4	9.6
361	119.1 -18.8	104.6 12.7	90.6 -26.5	88.2 2.0	89.2 -2.9	96.4 -1.3		
ULT	119.1	111.9	104.8	100.6	98.3	98.0	104.8	91.3
%	-18.8	-6.6	-13.4	-10.4	-9.1	-7.9	-13.4	-0.8
362	87.5 6.5	79.6 -8.2	80.6 -5.9	77.3 15.3	79.8 13.0	68.1 15.0		
ULT	87.5	83.5	82.5	81.2	80.9	78.8	82.5	75.1
%	6.5	-1.0	-2.7	1.1	3.2	4.8	-2.7	14.4
369	104.7 -5.1	81.7 -5.2	80.4 -26.9	103.4 -5.8	102.8 -24.6	112.9 -10.2		
ULT	104.7	93.2	88.9	92.6	94.6	97.7	88.9	106.4
%	-5.1	-5.2	-13.0	-11.1	-14.4	-13.6	-13.0	-14.2
371	126.9 -1.5	111.4 -1.6	107.1 -8.4	128.2 2.6	123.8 -5.5	110.8 -0.2		
ULT	126.9	119.2	115.1	118.4	119.5	118.0	115.1	120.9
%	-1.5	-1.6	-3.8	-2.1	-2.9	-2.4	-3.8	-1.1
372	155.6 11.0	135.2 9.9	133.3 -0.8	162.4 10.6	144.2 3.5	141.8 9.6		
ULT	155.6	145.4	141.4	146.6	146.2	145.4	141.4	149.5
%	11.0	10.5	6.7	7.7	6.9	7.3	6.7	7.9
381	134.0 7.8	118.9 7.3	130.4 -3.3	152.6 7.1	153.1 -5.6	151.8 9.8		
ULT	134.0	126.4	127.7	134.0	137.8	140.1	127.7	152.5
%	7.8	7.6	3.6	4.6	2.2	3.5	3.6	3.3
382	132.9 6.2	130.3 -0.7	119.4 -19.6	151.0 10.3	153.4 -12.6	151.9 -8.6		
ULT	132.9	131.6	127.5	133.4	137.4	139.8	127.5	152.1
%	6.2	2.6	-5.5	-1.5	-4.2	-5.1	-5.5	-4.7

TAULU 1:  
TEOLLISUUSTUJANNON VOLYYMI-INDEKSI V. 1986  
INDUSTRIPRODUKTIONS VOLYMINDEKX AR 1986

TGL. NI	(ENNAKKOTIETOJA) (FÖRHANDSUPPGIFTER)												NELJÄNNESET KVARTAL		
	TANMI JAN	HELMİ FEBR	MAALIS MARS	HUHTI APRIL	TOUKO MAJ	KESA JUNI							I	II	
383	%	166.9	131.8	135.6	176.0	160.3	161.7							144.8	166.0
		17.4	9.2	-2.9	25.2	3.0	20.4							7.9	15.6
ULT	%	166.9	149.4	144.8	152.6	154.1	155.4							144.8	166.0
		17.4	13.7	7.9	12.4	10.3	11.9							7.9	15.6
384	%	123.2	107.9	104.0	121.9	129.1	102.7							111.7	117.9
		-1.7	-6.4	-12.3	5.6	-11.1	1.7							-6.7	-2.2
ULT	%	123.2	115.6	111.7	114.3	117.2	114.8							111.7	117.9
		-1.7	-3.9	-6.7	-3.7	-5.4	-4.4							-6.7	-2.2
385	%	174.4	190.1	178.0	209.2	197.3	199.8							180.8	202.1
		23.0	18.1	-15.7	28.9	-8.9	1.0							5.6	5.2
ULT	%	174.4	182.2	180.8	187.9	189.8	191.5							180.8	202.1
		23.0	20.4	5.6	11.2	6.3	5.4							5.6	5.2
390	%	102.4	90.1	109.3	133.6	135.9	120.0							100.6	129.9
		7.9	4.4	-11.7	-1.0	-11.1	-0.4							-1.0	-4.6
ULT	%	102.4	96.3	100.6	108.9	114.3	115.2							100.6	129.9
		7.9	6.3	-1.0	-1.0	-3.6	-3.1							-1.0	-4.6
3	%	120.2	109.0	106.5	126.7	120.3	115.9							111.9	121.0
		3.6	1.1	-12.5	6.1	-8.1	1.3							-2.9	-0.5
ULT	%	120.2	114.6	111.9	115.6	116.5	116.4							111.9	121.0
		3.6	2.4	-2.9	-0.6	-2.2	-1.7							-2.9	-0.5
410	%	152.1	133.8	123.7	115.4	106.6	92.5							136.5	104.8
		-3.3	-5.8	-6.3	-6.2	-5.5	-8.0							-5.1	-6.5
ULT	%	152.1	143.0	136.5	131.3	126.3	120.7							136.5	104.8
		-3.3	-4.5	-5.1	-5.3	-5.3	-5.7							-5.1	-6.5
420	%	106.7	98.8	107.3	108.5	107.9	101.5							104.3	106.0
		0.1	-0.2	-6.2	1.2	-3.8	3.1							-2.3	0.0
ULT	%	106.7	102.8	104.3	105.3	105.8	105.1							104.3	106.0
		0.1	-0.0	-2.3	-1.4	-1.9	-1.1							-2.3	0.0
4	%	149.4	131.7	122.7	115.0	106.7	93.1							134.6	104.9
		-3.2	-5.6	-6.3	-5.8	-5.4	-7.3							-4.9	-6.1
ULT	%	149.4	140.5	134.6	129.7	125.1	119.7							134.6	104.9
		-3.2	-4.3	-4.9	-5.1	-5.2	-5.5							-4.9	-6.1
2, 3 ja 4	%	122.4	110.5	107.5	124.9	118.6	118.3							113.5	120.6
		2.5	0.0	-12.0	4.8	-8.0	2.8							-3.3	-0.4
ULT	%	122.4	116.5	113.5	116.3	116.8	117.0							113.5	120.6
		2.5	1.3	-3.3	-1.3	-2.7	-1.8							-3.3	-0.4



TAULU 1:  
TEOLLISUUSTUOTANNON VOLYYMI-INDEKSI V. 1986  
INDUSTRIPRODUKTIONS VOLYMINDEKSI ÅR 1986  
(ENNAKKOTIETOJA)  
(FÖRHANDSUPPGIFTER)

NELJÄNNEKSET  
KVARTAL

I II

TOL TAMMI HELMI MAALIS HUHTI TOUKO KESÄ  
NI JAN FEBR MARS APRIL MAJ JUNI

331, 341	104.7	95.2	91.0	114.2	104.7	100.3
%	3.5	-3.2	-20.2	7.6	-6.0	-2.3
ULT	104.7	100.0	97.0	101.3	102.0	101.7
%	0.5	-1.3	-8.1	-4.2	-4.5	-4.2
37 - 38	137.5	123.9	121.3	148.9	147.2	140.4
%	6.6	1.9	-11.3	11.1	-7.6	1.9
ULT	137.5	130.7	127.6	132.9	135.8	136.5
%	6.6	4.3	-1.2	2.0	-0.3	0.1
Muu 3	115.7	105.4	103.9	117.3	109.1	106.5
%	2.6	2.6	-9.7	1.3	-9.7	2.7
ULT	115.7	110.5	108.3	110.6	110.3	109.6
%	2.6	2.6	-1.7	-0.9	-2.8	-1.9
I	143.3	132.8	127.0	157.7	157.7	151.0
%	6.9	0.8	-14.6	11.4	-9.8	-1.6
ULT	143.3	138.0	134.4	140.2	143.7	144.9
%	6.9	3.9	-2.8	0.9	-1.7	-1.7
C	119.8	108.0	104.0	117.7	109.7	104.8
%	2.1	1.1	-9.5	3.9	-7.8	1.9
ULT	119.8	113.9	110.6	112.4	111.8	110.7
%	2.1	1.6	-2.2	-0.7	-2.2	-1.5
R	119.7	107.5	105.5	122.2	115.6	118.6
%	1.8	-0.7	-12.5	3.8	-7.6	4.2
ULT	119.7	113.6	110.9	113.7	114.1	114.8
%	1.8	0.6	-4.0	-2.0	-3.2	-2.0

TAULU 2:  
TEOLLISUUS- JA TUOTANNON VÄLYYMI-INDEKSI TYÖPÄIVÄÄ KOHTI V. 1986  
INDUSTRIPRODUKTIONS VOLYMINDEKSI PER ARBETS DAG ÅR 1986

(ENNAKKOTIETOJA)  
(FÖRHANDSUPPGIFTER)

TCL N°	(ENNAKKOTIETOJA) (FÖRHANDSUPPGIFTER)												NELJÄNNEKSET KVAERTAL			
	TAMMI JAN	HELMI FEBR	MAALIS MARS	HUHTI APRIL	TOUJKU MAJ	KESÄ JUNI							I	II		
230	%	112.2	59.2	99.7	95.2	91.9	102.8								103.7	96.6
	%	-21.9	-26.1	-9.3	-22.3	-17.1	-4.5								-19.8	-15.0
JLT	%	112.2	105.7	103.7	101.6	99.6	100.1									
	%	-21.9	-24.0	-19.8	-20.4	-19.8	-17.0									
290	%	64.1	51.6	49.0	47.3	80.3	911.7									
	%	11.7	-16.3	-22.4	-9.7	-9.3	91.5									
JLT	%	64.1	57.8	54.9	53.0	58.5	200.7									
	%	11.7	-2.8	-9.6	-9.6	-9.5	50.7									
2	%	93.0	80.1	79.4	76.0	87.3	426.4									
	%	-14.9	-23.8	-12.9	-19.5	-14.4	67.2									
ULT	%	93.0	86.5	84.2	82.1	83.2	140.4									
	%	-14.9	-19.3	-17.4	-17.9	-17.2	11.3									
311-2	%	102.8	98.3	99.3	111.2	104.8	109.6									
	%	0.7	1.8	-6.6	-3.4	-3.1	-3.1									
JLT	%	102.8	100.5	100.1	102.9	103.5	104.3									
	%	0.7	1.2	-1.5	-2.0	-2.7	-2.8									
313	%	35.4	90.6	116.7	114.9	112.3	154.6									
	%	13.5	8.6	13.3	-10.5	5.3	11.5									
ULT	%	35.4	88.0	97.6	101.9	104.0	112.4									
	%	13.5	10.9	11.9	4.5	4.7	6.2									
314	%	106.8	77.4	96.5	103.0	106.1	124.2									
	%	-10.7	-8.5	2.6	15.0	7.9	7.2									
ULT	%	106.8	92.1	93.6	96.0	98.0	102.3									
	%	-10.7	-9.8	-5.9	-1.1	0.8	2.0									
321	%	75.9	79.4	77.6	86.4	86.6	82.6									
	%	-4.7	5.1	-2.8	-4.4	-5.2	-2.8									
ULT	%	75.9	77.6	77.6	79.8	81.2	81.4									
	%	-4.7	0.1	-0.9	-1.9	-2.6	-2.6									
322	%	127.7	129.6	110.8	168.8	103.2	108.2									
	%	5.0	-5.8	-4.8	-1.2	-6.3	-4.1									
JLT	%	127.7	128.6	122.7	119.2	116.0	114.7									
	%	5.0	-0.7	-2.0	-1.8	-2.6	-2.9									
323	%	135.0	105.2	101.8	113.4	109.0	103.0									
	%	-2.6	3.6	-10.5	-1.6	-10.3	-19.8									
ULT	%	105.0	105.1	104.0	106.3	106.9	106.2									
	%	-2.6	0.4	-3.4	-3.0	-4.6	-7.4									

TAULU 2:  
TEOLLISUUSTUANTANNON VÄLYYMI-INDEKSI TYÖPÄIVÄÄ KOHTI V. 1986  
INDUSTRIPRODUKTIONS VOLYMINDEKX PER ARBETSDAG ÅR 1986

(ENNAKKOTIETOJA)  
(FÖRHANDSUPPGIFTER)

NELJÄNNEKSET  
KVARTAL

I II

TOL NI	TAMMI JAN	HELMI FEBR	MAALIS MARS	HUHTI APRIL	TOUKO MAJ	KESÄ JUNI
324	162.9 25.7	123.9 4.6	138.7 0.7	121.6 9.7	110.5 -10.5	105.3 -10.8
ULT	162.9 25.7	143.4 15.6	141.8 10.3	136.8 8.0	131.5 4.4	127.1 2.0
331	90.1 17.1	86.8 5.2	91.2 -6.8	110.9 -5.2	101.2 -11.9	102.8 -2.8
ULT	90.1 17.1	88.4 10.9	89.4 4.2	94.7 1.3	96.0 -1.8	97.2 -2.0
332	119.1 6.9	98.5 7.7	85.5 -11.9	120.2 0.8	118.7 -5.7	123.5 1.4
ULT	119.1 6.9	108.8 7.3	101.0 1.1	105.8 1.0	108.4 -0.6	110.9 -0.2
341	106.2 -5.8	107.8 -6.6	98.1 -16.3	114.5 1.7	112.4 0.6	106.8 -4.6
ULT	106.2 -5.8	107.0 -6.2	104.0 -9.6	106.6 -6.8	107.8 -5.4	107.6 -5.2
342	123.5 -2.7	136.6 6.4	135.7 2.3	139.5 0.7	137.5 1.1	117.7 6.9
ULT	123.5 -2.7	130.0 1.9	131.9 2.0	133.8 1.7	134.6 1.6	131.8 2.3
351	118.5 9.5	116.2 -3.9	123.9 -1.1	127.7 -5.6	117.6 0.6	112.8 8.2
ULT	118.5 9.5	117.4 2.4	119.5 1.2	121.6 -0.7	120.8 -0.4	119.4 0.8
352	117.7 11.7	121.1 10.3	132.4 9.9	137.2 3.5	126.8 -3.3	127.5 -1.6
ULT	117.7 11.7	119.4 11.0	123.7 10.6	127.1 8.6	127.0 6.0	127.1 4.6
353	111.2 13.4	120.2 10.1	106.1 -0.1	45.5 -53.8	37.6 -57.7	46.2 -39.8
ULT	111.2 13.4	115.7 11.6	112.5 7.7	95.8 -7.0	84.1 -16.0	77.8 -19.2
354	113.3 24.0	109.7 -11.5	77.3 -25.7	138.1 -2.1	121.0 -3.2	299.2 22.6
ULT	113.3 24.0	111.5 3.5	100.1 -6.0	109.6 -4.8	111.9 -4.4	143.1 3.5

141.8 112.5  
10.3 -6.9

89.4 105.0  
4.2 -6.7

101.0 120.8  
1.1 -1.2

104.0 111.2  
-9.6 -0.7

131.9 131.6  
2.0 2.6

119.5 119.4  
1.2 0.5

123.7 130.5  
10.6 -0.5

112.5 43.1  
7.7 -51.1

100.1 186.1  
-6.0 9.5

TAULU 2:  
TEOLLISUUSTUOTANNON VOLYMI-INDEXSI TYÖPÄIVÄÄ KOHTI V. 1986  
INDUSTRIPRODUKTIONS VOLYMINDEKX PER ARBETSDAG AR 1986

(ENNAKKOTIETOJA)  
(FÖRHANDSUPPGIFTER)

NELJÄNNESET  
KVARTAL

TOL NI	V. 1986												I		II	
	TAMMI JAN	HELMI FEBR	MAALIS MARS	HUHTI APRIL	TOUKO MAJ	KESÄ JUNI										
355	98.8 3.7	91.0 -7.2	90.6 -7.4	114.0 -15.1	108.4 16.4	114.9 9.9										
ULT	98.8 3.7	94.9 -1.8	93.5 -3.7	98.6 -7.3	100.6 -3.0	103.0 -0.9								93.5 -3.7	112.4 1.6	
356	162.4 -7.1	173.3 16.4	182.5 12.7	188.3 -7.0	187.2 6.5	186.6 30.3										
ULT	162.4 -7.1	167.9 3.7	172.8 6.7	176.6 2.7	178.8 3.4	180.1 7.3								172.8 6.7	187.4 7.8	
361	114.6 -18.5	110.8 13.1	100.9 -18.4	84.9 -6.9	87.7 2.0	99.3 -5.7										
ULT	114.6 -18.5	112.7 -5.5	108.8 -9.9	102.8 -9.3	99.8 -7.5	99.7 -7.2								108.8 -9.9	90.6 -3.7	
362	85.0 6.5	84.7 -8.0	81.4 -2.5	76.9 11.7	79.6 14.3	71.1 13.6										
ULT	85.0 6.5	84.9 -1.2	83.7 -1.7	82.0 1.2	81.5 3.5	79.8 4.9								83.7 -1.7	75.8 13.2	
369	100.8 -4.9	86.7 -5.0	86.2 -20.9	101.2 -12.4	101.8 -22.2	117.6 -12.9										
ULT	100.8 -4.9	93.8 -4.9	91.2 -10.6	93.7 -11.1	95.3 -13.7	99.0 -13.6								91.2 -10.6	106.9 -15.9	
371	122.8 -1.3	118.6 -1.4	111.6 -2.7	128.3 -3.2	124.0 -3.0	113.3 -2.6										
ULT	122.8 -1.3	120.7 -1.4	117.7 -1.8	120.3 -2.2	121.1 -2.3	119.8 -2.4								117.7 -1.8	121.9 -2.9	
372	151.9 11.1	145.9 10.1	136.1 2.4	162.1 7.4	142.8 5.1	143.7 8.0										
ULT	151.9 11.1	148.9 10.6	144.6 7.9	149.0 7.8	147.8 7.2	147.1 7.4								144.6 7.9	149.5 6.8	
381	128.2 8.3	125.1 7.7	144.3 7.3	147.5 -2.4	153.5 -0.7	159.6 4.8										
ULT	128.2 8.3	126.7 8.0	132.5 7.8	136.3 4.8	139.7 3.6	143.0 3.8								132.5 7.8	153.5 0.6	
382	127.2 6.6	137.2 -0.3	132.2 -10.8	145.6 0.6	153.8 -8.1	159.9 -12.8										
ULT	127.2 6.6	132.2 2.9	132.2 -2.1	135.5 -1.4	139.2 -3.0	142.6 -5.0								132.2 -2.1	153.1 -7.3	

TAULU 2:  
TEOLLISUUSTUOTANNON VOLYYMI-INDEKSI TYÖPÄIVÄÄ KOHTI V. 1986  
INDUSTRIPRODUKTIONS VOLYMINDEX PER ARBETSDAG ÅR 1986

NELJÄNNEKSET  
KVARTAL

I II

(ENNAKOTIETOJA)  
(FÖRHANDSUPPGIFTER)

TGL	TAMMI JAN	HELMI FEBR	MAALIS MARS	HUHTI APRIL	TOUKO MAJ	KESÄ JUNI	
383	160.1 17.9	138.8 9.6	149.8 7.7	169.5 14.2	161.3 8.0	170.1 15.1	
ULT	160.1	149.4	149.6	154.5	155.9	158.3	149.6
%	17.9	13.9	11.7	12.4	11.5	12.1	11.7
384	119.0 -1.3	113.8 -6.0	114.8 -3.0	117.6 -3.4	129.4 -6.6	108.0 -2.8	
ULT	118.0	115.9	115.5	116.1	118.7	116.9	115.5
%	-1.3	-3.7	-3.5	-3.4	-4.1	-3.9	-3.5
385	167.1 23.5	200.4 18.6	197.6 -6.4	200.5 17.7	198.1 -4.2	210.6 -3.6	
ULT	167.1	183.7	188.3	191.4	192.7	195.7	188.3
%	23.5	20.7	9.6	11.6	8.0	5.7	9.6
390	98.1 8.4	94.9 4.8	121.2 -2.0	128.6 -9.6	136.4 -6.5	126.4 -5.0	
ULT	98.1	96.5	104.8	110.7	115.9	117.6	104.8
%	8.4	6.6	3.1	-0.9	-2.3	-2.8	3.1
3	115.5 3.9	115.0 1.4	114.6 -4.6	123.5 -2.1	121.5 -4.7	121.5 -2.1	
ULT	115.5	115.3	115.0	117.2	118.0	118.6	115.0
%	3.9	2.6	0.1	-0.5	-1.4	-1.5	0.1
410	148.7 -3.3	144.9 -5.8	122.1 -5.5	116.7 -7.1	105.2 -5.5	94.7 -8.0	
ULT	148.7	146.8	138.5	133.1	127.5	122.0	138.5
%	-3.3	-4.6	-4.8	-5.3	-5.4	-5.7	-4.8
420	103.6 0.3	105.9 -0.0	110.9 -2.0	107.2 -2.9	107.0 -1.6	104.7 1.1	
ULT	103.6	104.8	106.8	106.9	106.9	106.6	106.8
%	0.3	0.1	-0.6	-1.2	-1.3	-0.9	-0.6
4	146.0 -3.1	142.5 -5.6	121.4 -5.3	116.1 -6.8	105.3 -5.2	95.3 -7.4	
ULT	146.0	144.2	136.6	131.5	126.2	121.1	136.6
%	-3.1	-4.4	-4.6	-5.1	-5.1	-5.5	-4.6
2, 3 ja 4	117.9 2.8	117.0 0.2	114.6 -4.8	122.1 -2.7	119.5 -4.8	123.8 -0.2	
ULT	117.9	117.4	116.5	117.9	118.2	119.2	116.5
%	2.8	1.5	-0.7	-1.2	-2.0	-1.7	-0.7

115.5 118.3  
-3.5 -6.4

188.3 203.1  
9.6 2.3

104.8 130.5  
3.1 -7.1

115.0 122.2  
0.1 -2.9

138.5 105.5  
-4.8 -6.8

106.8 106.3  
-0.6 -1.2

136.6 105.6  
-4.6 -6.5

116.5 121.8  
-0.7 -2.6

TAULU 2:  
TEOLLISUUSTUOTANNON VOLYYMI-INDEKSI TYÖPÄIVÄÄ KOHTI V. 1986  
INDUSTRIPRODUKTIONS VOLYMINDEKX PER ARBETSDAG ÅR 1986

NELJÄNNEKSET  
KVARTAL

I II

TOL NI	TAMMI JAN	HELMI FEBR	MAALIS MARS	HUHTI APRIL	TUUKO MAJ	KESÄ JUNI	
331, 341 %	100.3 0.6	100.1 -3.1	95.6 -13.2	113.2 -0.9	108.3 -4.0	105.3 -3.9	
ULT %	100.3 0.6	100.2 -1.3	98.7 -5.5	102.3 -4.3	103.5 -4.2	103.8 -4.2	98.7 109.0 -5.5 -2.9
37 - 38 %	152.0 7.0	130.8 2.2	133.0 -2.3	144.3 1.9	147.6 -3.2	147.1 -2.5	
ULT %	132.0 7.0	131.4 4.6	131.9 2.2	135.0 2.1	137.5 0.9	139.1 0.3	131.9 146.3 2.2 -1.3
Muu 3 %	111.6 2.8	111.4 2.9	111.2 -2.2	114.0 -6.0	109.6 -6.4	111.4 -0.7	
ULT %	111.6 2.8	111.5 2.9	111.4 1.1	112.1 -0.8	111.6 -1.9	111.5 -1.7	111.4 111.7 1.1 -4.4
I %	137.2 7.3	139.8 1.2	140.5 -5.4	152.1 1.8	158.2 -5.3	158.9 -6.1	
ULT %	137.2 7.3	138.5 4.2	139.2 0.7	142.4 1.0	145.6 -0.4	147.8 -1.5	139.2 156.4 0.7 -3.4
C %	115.6 2.4	114.3 1.3	111.4 -2.0	114.6 -3.5	110.1 -4.4	109.6 -1.5	
ULT %	115.6 2.4	114.9 1.8	113.8 0.5	114.0 -0.5	113.2 -1.3	112.6 -1.3	113.8 111.4 0.5 -3.2
R %	115.3 2.0	113.9 -0.5	111.3 -5.9	120.1 -3.3	116.9 -4.9	124.2 1.7	
ULT %	115.3 2.0	114.6 0.8	113.5 -1.5	115.2 -2.0	115.5 -2.6	116.9 -1.9	113.5 120.4 -1.5 -2.2