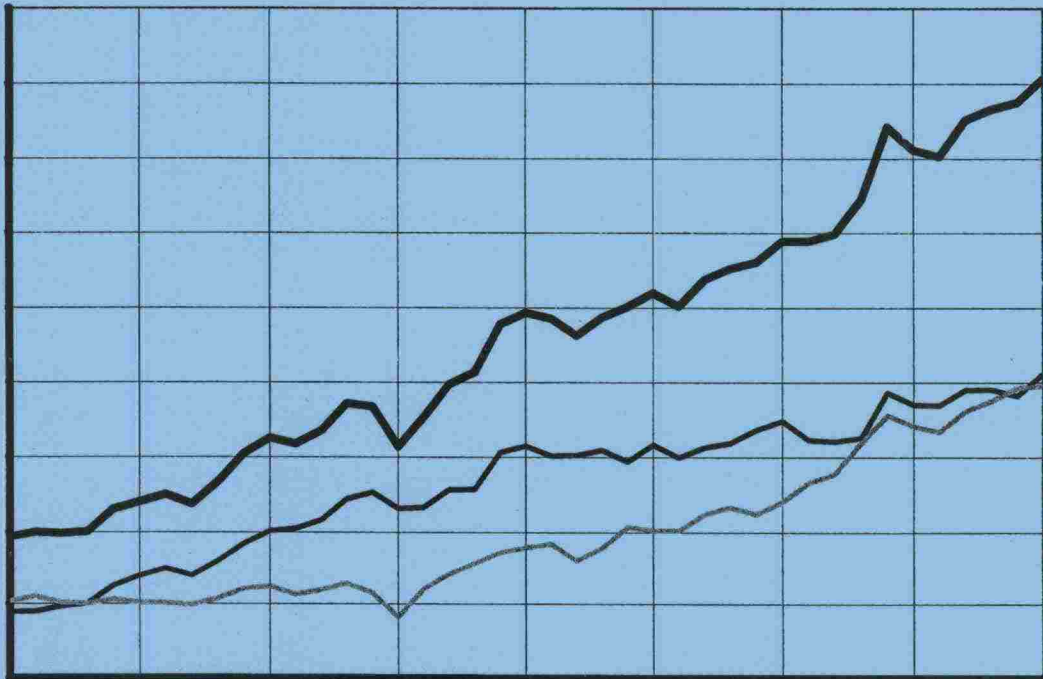


Statistics on Shipping between Finland and Foreign Countries

2000



Statistics from the Finnish Maritime Administration 8/2001

FINNISH MARITIME ADMINISTRATION
Statistics Division

August 2001

Statistics on Shipping between Finland and Foreign Countries 2000

Statistics from the Finnish Maritime Administration 8/2001
ISSN 1235-6336

INTRODUCTION

This statistical review is an English summary of the Finnish Maritime Administration's annual statistics publication 4/2001 under the title "Shipping between Finland and Foreign countries 2000", which is in Finnish, Swedish and partly in English.

This English-language statistical review is published for the seventh time. It contains time series for Finland's international shipping in tables and diagrams. Detailed information for transport exclusively in 2000 is available in the appendices of the statistical publication "Shipping between Finland and Foreign Countries 2000".

For further information, please contact:

Finnish Maritime Administration
Statistics Division
PO Box 171
FIN-00181 Helsinki
Finland

Mr Antti Arkima
Tel. +358 204 48 4377
Fax +358 204 48 4640
e-mail Antti.Arkima@fma.fi

PRODUCT PRESENTATION

The term shipping statistics is used for statistics on the transport by sea of cargoes and passengers between Finland and foreign countries as well as statistics on vessels in international transport calling at Finnish ports.

The Finnish Maritime Administration has produced shipping statistics since 1918. The purpose is to serve the makers of shipping policy as efficiently as possible by generating statistical information for their use in planning, monitoring, supervision and decision-making. Industry, trade, research and the shipping industry also need statistical data on shipping.

Collecting data

Whenever a Finnish or foreign vessel engaged in international shipping arrives at or leaves a Finnish port, its agent is obliged to supply the Finnish Maritime Administration with information on the vessel and its cargo according to the ports where it was loaded or unloaded. The information is given in machine language or on an arrival/departure notification form. These data are supplemented by reports sent in by the port authorities. Currently the data are collected in machine language within the framework of the nation-wide Port@Net system.

The information content

The shipping statistics cover all cargoes loaded and unloaded in Finnish ports, including transit cargoes en route to third countries as well as cargoes loaded in vehicles and containers. Statistics on pure transit traffic and on cargoes in vehicles and containers are also given separately.

The statistics for passenger traffic covers information on passenger vessels and car ferries as well as passengers travelling on cargo vessels that regularly carry passengers. Passengers on cruise liners that call at Finnish ports are counted as both arriving in and departing from Finland.

The tonnage of the vessels in the vessel traffic statistics is given in net figures as most navigation charges (including fairway charges, pilotage and harbour dues) are set according to the net tonnage.

SIGNIFICANT GROWTH IN GOODS VOLUMES, SLIGHT DECLINE IN PASSENGER TRAFFIC

The number of seaborne transports reached a new record in 2000. Imports increased by 7.6 per cent and exports by 0.5 per cent on the previous year.

Last year 40.1 per cent of goods were carried by Finnish tonnage. There was a 3.6 percentage point drop compared with the previous year. Finland's own international shipments accounted for 77.2 million tonnes.

Increase in import of coal and in export of forestry products

International goods traffic through the ports last year totalled 80.6 million tonnes. The increase from the previous year was 3.1 million tonnes. Of the quantities transported through the ports, 3.4 million tonnes consisted of transit shipments.

Imports comprised 41.1 million tonnes, compared with 38.2 million tonnes the previous year. This meant an increase of 2.9 million tonnes. There was an increase in the import of coal. The import of coal totalled 5.6 million tonnes, which is 1.7 million tonnes more than in the previous year. There was also a significant increase in the import of general cargo and timber. Of imports, 39.8 million tonnes consisted of Finnish international trade shipments and 1.2 million tonnes comprised transit shipments.

Exports amounted to 39.5 million tonnes. The increase was 196,000 tonnes compared with the previous year. There was an increase above all in the export of forestry products, especially paper. The export of paper totalled 10.9 million tonnes. The increase was 0.9 million tonnes compared with the previous year. Transit shipments accounted for 2.1 million tonnes of exports.

Slight increase in transit shipments

Transit shipments totalled 3.4 million tonnes. This meant an increase by 1.1 per cent compared with the previous year. Most of these shipments consist of export. The bulk of the exports consists of chemicals, ores and concentrates and fertilisers exported through Finnish ports to continental Europe. Exports decreased by 0.4 million tonnes. Imports consist primarily of general cargo, which is forwarded to Russia by lorries.

Transit shipments were mostly carried out through a handful of ports (Kotka and Hamina), where transit business accounts for a large proportion of the total. The port of Helsinki plays an important role in the transit shipments of general cargo.

Decrease in the proportion carried by Finnish tonnage

The share of Finnish tonnage in seaborne transports was 40.1 per cent (43.7 per cent in 1999, 42.9 per cent in 1998). Finnish vessels accounted for almost 47.2 per cent (52.1 per cent in 1999) of all import shipments; their share of imports of coal, crude oil and ores was very high.

Finnish vessels handled 32.8 per cent (35.4 per cent in 1999) of export shipments. The share of Finnish tonnage has remained approximately one third of all export shipments.

In 2000 Finnish tonnage carried 32.4 million tonnes of goods between Finland and the rest of the world. (All-time record 33.8 million tonnes in 1999).

Ten biggest ports handled 75 per cent of all shipments

In 2000 international cargo shipments passed through a total of 56 ports. However, the shipments were concentrated in the hands of the bigger ports; the ten biggest ports handled 60.8 million tonnes of cargo, which is 75.4 per cent of all international cargo shipments. The biggest ports were Sköldvik (12.8 million tonnes), Helsinki (10.1 million tonnes) and Kotka (6.9 million tonnes).

The biggest export harbours were Helsinki (5.0 million tonnes), Kotka (4.9 million tonnes) and Sköldvik (4.8 million tonnes). The biggest import harbours were Sköldvik (8.0 million tonnes), Helsinki (5.1 million tonnes) and Rautaruukki (4.4 million tonnes).

In Helsinki the shipments consisted mainly of general cargo and coal, in Sköldvik of oil, in Kotka of forest products and in Rautaruukki of ores, coal and metals.

Shipments between domestic ports totalled 5.8 million tonnes, most of which consisted of fuel and timber.

Traffic on the Saimaa Canal in 2000 totalled 1.8 million tonnes, of which shipments to and from foreign countries accounted for 1.7 million tonnes. Shipments on the canal increased by 9 per cent, that is by 149,000 tonnes on the previous year.

Slight drop in the number of passengers carried

In 2000 the passenger traffic between Finland and foreign countries decreased by nearly 180,000 passengers. The number of passengers carried totalled 16 million passengers.

The increase in passenger traffic in the 1990s is mainly due to the dramatic increase in traffic to and from Tallinn, Estonia. In 2000 6.2 million passengers were carried between Helsinki and Tallinn; this is 39 per cent of the passenger traffic between Finland and foreign countries.

However, the traffic to and from Sweden, which in 2000 totalled 9.3 million passengers (320,000 passengers less than in 1999), still has a dominant position. The share of the Finland-Sweden routes in overall passenger business was 58 per cent.

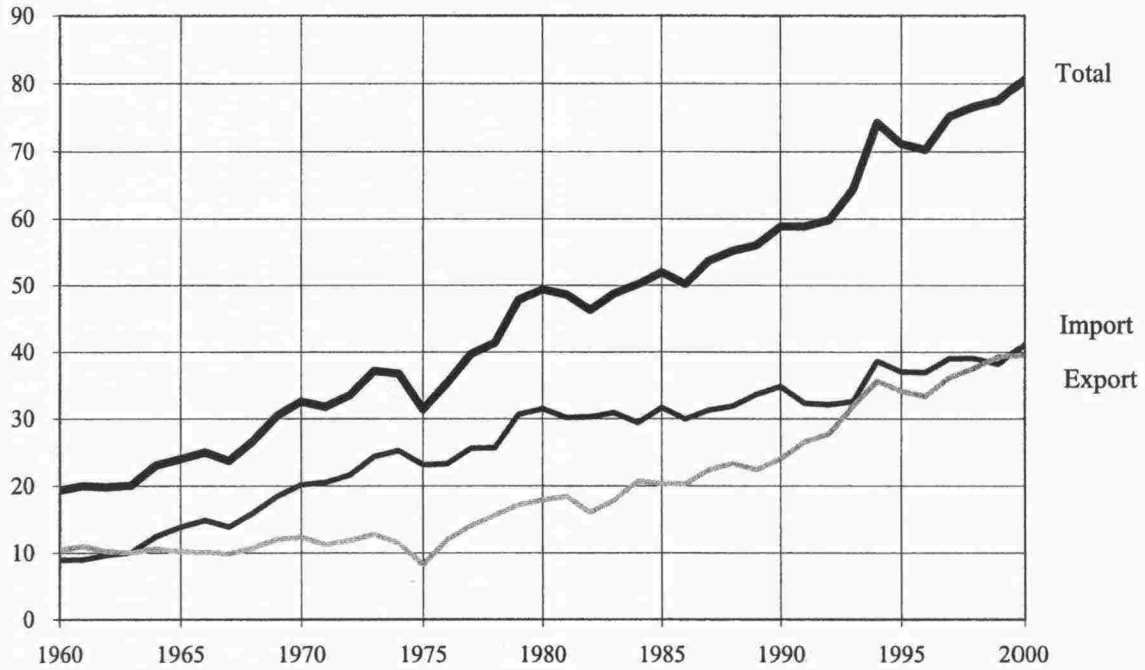
In the passenger traffic to and from Germany 179,000 passengers were carried in 2000.

A. Seaborne transports between Finland and foreign countries, 1960-2000

| Year | Import | | | Export | | | Total | | |
|------|------------|------------------------------|------|------------|------------------------------|------|------------|------------------------------|------|
| | tonnes | On Finnish vessels tonnes | % | tonnes | On Finnish vessels tonnes | % | tonnes | On Finnish vessels tonnes | % |
| 1960 | 8 955 490 | 5 373 054 | 60,0 | 10 399 690 | 3 554 098 | 34,2 | 19 355 180 | 8 927 152 | 46,1 |
| 61 | 8 992 685 | 5 710 718 | 63,5 | 11 025 990 | 3 992 647 | 36,2 | 20 018 675 | 9 703 365 | 48,5 |
| 62 | 9 671 578 | 6 285 427 | 65,0 | 10 184 167 | 3 981 824 | 39,1 | 19 855 745 | 10 267 251 | 51,7 |
| 63 | 10 047 891 | 6 615 438 | 65,8 | 10 032 012 | 4 000 400 | 39,9 | 20 079 903 | 10 615 838 | 52,9 |
| 64 | 12 462 389 | 7 838 276 | 62,9 | 10 619 002 | 4 548 417 | 42,8 | 23 081 391 | 12 386 693 | 53,7 |
| 65 | 13 868 394 | 8 304 382 | 59,9 | 10 178 070 | 4 500 489 | 44,2 | 24 046 464 | 12 804 871 | 53,3 |
| 66 | 14 911 041 | 8 632 273 | 57,9 | 10 130 284 | 4 497 570 | 44,4 | 25 041 325 | 13 129 843 | 52,4 |
| 67 | 13 902 140 | 8 278 698 | 59,5 | 9 861 315 | 4 492 922 | 45,6 | 23 763 455 | 12 771 620 | 53,7 |
| 68 | 15 957 992 | 8 734 088 | 54,7 | 10 753 595 | 4 734 097 | 44,0 | 26 711 587 | 13 468 185 | 50,4 |
| 69 | 18 419 478 | 9 785 779 | 53,1 | 12 033 042 | 5 262 604 | 43,7 | 30 452 520 | 15 048 383 | 49,4 |
| 1970 | 20 179 806 | 10 624 933 | 52,7 | 12 359 692 | 5 200 967 | 42,1 | 32 539 498 | 15 825 900 | 48,6 |
| 71 | 20 505 729 | 10 198 217 | 49,7 | 11 247 482 | 4 711 973 | 41,9 | 31 753 211 | 14 910 190 | 47,0 |
| 72 | 21 647 007 | 11 198 425 | 51,7 | 11 883 405 | 5 140 029 | 43,3 | 33 530 412 | 16 338 454 | 48,7 |
| 73 | 24 400 050 | 12 835 850 | 52,6 | 12 791 947 | 6 120 617 | 47,8 | 37 191 997 | 18 956 467 | 51,0 |
| 74 | 25 305 879 | 13 486 367 | 53,3 | 11 440 457 | 5 714 965 | 50,0 | 36 746 336 | 19 201 332 | 52,3 |
| 75 | 23 175 298 | 13 259 771 | 57,2 | 8 216 782 | 4 272 837 | 52,0 | 31 392 080 | 17 532 608 | 55,9 |
| 76 | 23 315 627 | 11 996 673 | 51,5 | 11 997 152 | 5 282 529 | 44,0 | 35 312 779 | 17 279 202 | 48,9 |
| 77 | 25 629 621 | 11 843 467 | 46,2 | 14 086 764 | 5 662 587 | 40,2 | 39 716 385 | 17 506 054 | 44,1 |
| 78 | 25 723 429 | 13 105 159 | 50,9 | 15 638 566 | 7 099 651 | 45,4 | 41 361 995 | 20 204 810 | 48,8 |
| 79 | 30 638 664 | 15 951 702 | 52,1 | 17 187 594 | 7 225 635 | 42,0 | 47 826 258 | 23 177 337 | 48,5 |
| 1980 | 31 470 022 | 14 428 682 | 45,8 | 17 900 110 | 6 633 713 | 37,1 | 49 370 132 | 21 062 395 | 42,7 |
| 81 | 30 177 916 | 15 454 560 | 51,2 | 18 419 447 | 8 638 810 | 46,9 | 48 597 363 | 24 093 370 | 49,6 |
| 82 | 30 259 848 | 15 517 461 | 51,3 | 16 039 886 | 7 719 070 | 48,1 | 46 299 734 | 23 236 531 | 50,2 |
| 83 | 30 914 693 | 14 971 348 | 48,4 | 17 844 858 | 8 302 024 | 46,5 | 48 759 551 | 23 273 372 | 47,7 |
| 84 | 29 417 598 | 14 885 728 | 50,6 | 20 729 314 | 9 684 108 | 46,7 | 50 146 912 | 24 569 836 | 49,0 |
| 85 | 31 647 531 | 14 561 257 | 46,0 | 20 307 126 | 8 498 273 | 41,8 | 51 954 657 | 23 059 530 | 44,4 |
| 86 | 29 946 090 | 14 887 336 | 49,7 | 20 245 956 | 7 662 184 | 37,8 | 50 192 046 | 22 549 520 | 44,9 |
| 87 | 31 284 557 | 15 770 055 | 50,4 | 22 436 947 | 8 011 157 | 35,7 | 53 721 504 | 23 781 212 | 44,3 |
| 88 | 31 873 844 | 16 422 987 | 51,5 | 23 353 075 | 7 646 659 | 32,7 | 55 226 919 | 24 069 646 | 43,6 |
| 89 | 33 631 729 | 17 068 791 | 50,8 | 22 425 426 | 6 684 424 | 29,8 | 56 057 155 | 23 753 215 | 42,4 |
| 1990 | 34 824 700 | 13 103 294 | 37,6 | 24 046 721 | 7 252 334 | 30,2 | 58 871 421 | 20 355 628 | 34,6 |
| 91 | 32 277 120 | 12 145 669 | 37,6 | 26 617 840 | 8 001 534 | 30,1 | 58 894 960 | 20 147 203 | 34,2 |
| 92 | 32 090 079 | 12 667 725 | 39,5 | 27 758 450 | 8 302 240 | 29,9 | 59 848 529 | 20 969 965 | 35,0 |
| 93 | 32 560 115 | 15 910 954 | 48,9 | 31 875 849 | 9 345 083 | 29,3 | 64 435 964 | 25 256 037 | 39,2 |
| 94 | 38 637 495 | 18 113 632 | 46,9 | 35 605 998 | 10 768 137 | 30,2 | 74 243 493 | 28 881 769 | 38,9 |
| 95 | 37 036 219 | 18 066 162 | 48,8 | 34 121 954 | 10 811 101 | 31,7 | 71 158 173 | 28 877 263 | 40,6 |
| 96 | 36 944 564 | 18 692 722 | 50,6 | 33 344 847 | 10 948 852 | 32,8 | 70 289 411 | 29 641 574 | 42,2 |
| 97 | 39 018 094 | 20 157 606 | 51,7 | 36 164 057 | 12 024 615 | 33,3 | 75 182 151 | 32 182 221 | 42,8 |
| 98 | 39 069 406 | 19 581 411 | 50,1 | 37 524 151 | 13 314 609 | 35,5 | 76 593 557 | 32 896 020 | 42,9 |
| 99 | 38 196 371 | 19 910 486 | 52,1 | 39 306 729 | 13 925 507 | 35,4 | 77 503 100 | 33 835 993 | 43,7 |
| 2000 | 41 092 776 | 19 389 994 | 47,2 | 39 502 576 | 12 960 624 | 32,8 | 80 595 352 | 32 350 618 | 40,1 |

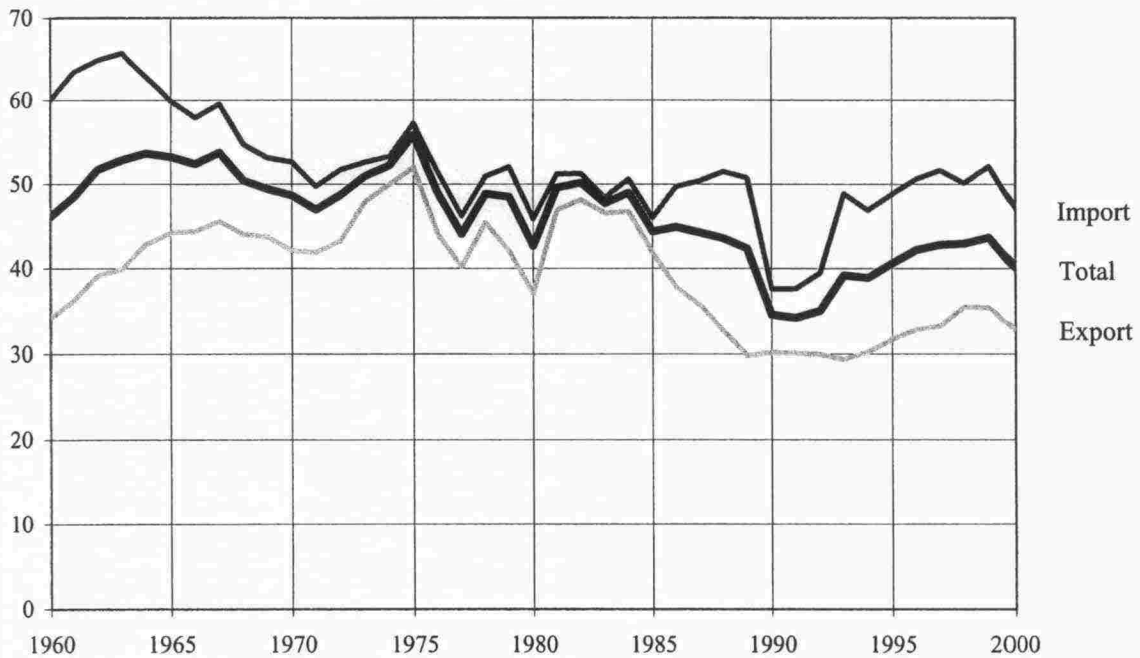
B. Seaborne transports between Finland and foreign countries, 1960-2000

Million tonnes



C. Percentage of goods carried by Finnish vessels, 1960-2000

%



D. Seaborne transports between Finland and foreign countries by type of cargo, 1980 - 2000

Import

| Year | Petroleum tonnes | Coal and coke tonnes | Other dry bulk* tonnes | General cargo and metals tonnes | Other imports tonnes | Total tonnes |
|------|---------------------|-------------------------|---------------------------|---------------------------------------|-------------------------|-----------------|
| 1980 | 14 703 803 | 5 093 607 | 6 143 015 | 3 939 819 | 1 589 778 | 31 470 022 |
| 81 | 12 431 566 | 6 134 316 | 5 466 835 | 3 731 636 | 2 413 563 | 30 177 916 |
| 82 | 11 514 530 | 5 455 419 | 5 984 606 | 3 619 614 | 3 685 679 | 30 259 848 |
| 83 | 12 732 480 | 5 022 889 | 5 177 304 | 3 496 975 | 4 485 045 | 30 914 693 |
| 84 | 12 390 896 | 4 320 257 | 5 261 293 | 3 300 751 | 4 144 401 | 29 417 598 |
| 85 | 12 837 757 | 6 002 835 | 5 529 153 | 3 974 310 | 3 303 476 | 31 647 531 |
| 86 | 12 188 465 | 5 764 128 | 5 927 540 | 3 675 391 | 2 390 566 | 29 946 090 |
| 87 | 13 162 996 | 5 586 041 | 5 865 500 | 4 020 859 | 2 649 161 | 31 284 557 |
| 88 | 12 129 775 | 5 541 130 | 6 796 563 | 4 475 168 | 2 931 208 | 31 873 844 |
| 89 | 11 287 631 | 6 318 238 | 7 506 404 | 5 068 318 | 3 451 138 | 33 631 729 |
| 1990 | 11 505 550 | 6 713 255 | 8 174 677 | 4 833 488 | 3 597 730 | 34 824 700 |
| 91 | 12 167 119 | 6 095 082 | 7 141 421 | 4 070 944 | 2 802 554 | 32 277 120 |
| 92 | 11 362 865 | 4 677 491 | 7 754 238 | 4 275 500 | 4 019 985 | 32 090 079 |
| 93 | 10 468 672 | 6 179 815 | 8 010 681 | 4 837 798 | 3 063 149 | 32 560 115 |
| 94 | 12 666 602 | 8 365 029 | 8 234 570 | 6 262 958 | 3 108 336 | 38 637 495 |
| 95 | 11 724 523 | 7 051 134 | 7 532 475 | 7 017 451 | 3 710 636 | 37 036 219 |
| 96 | 10 754 926 | 7 600 049 | 8 125 797 | 7 558 087 | 2 905 705 | 36 944 564 |
| 97 | 9 462 284 | 7 530 127 | 9 197 189 | 8 939 038 | 3 889 456 | 39 018 094 |
| 98 | 11 594 217 | 4 962 427 | 9 501 657 | 8 896 062 | 4 115 043 | 39 069 406 |
| 99 | 12 342 655 | 3 827 685 | 10 177 365 | 8 060 878 | 3 787 788 | 38 196 371 |
| 2000 | 11 650 001 | 5 558 943 | 10 369 197 | 8 685 464 | 4 829 171 | 41 092 776 |

* fertilizers, ores and concentrates, crude minerals, cereals

Export

| Year | Sawn wood tonnes | Other forest industry products tonnes | General cargo and metals tonnes | Petroleum and chemicals tonnes | Other exports tonnes | Total tonnes |
|------|---------------------|---|---------------------------------------|--------------------------------------|-------------------------|-----------------|
| 1980 | 3 696 227 | 7 434 221 | 2 458 045 | 3 245 976 | 1 065 641 | 17 900 110 |
| 81 | 2 824 519 | 7 375 185 | 2 929 155 | 3 786 708 | 1 503 880 | 18 419 447 |
| 82 | 2 460 917 | 6 183 058 | 2 760 104 | 3 105 493 | 1 530 314 | 16 039 886 |
| 83 | 2 656 471 | 6 544 394 | 3 195 573 | 4 118 469 | 1 329 951 | 17 844 858 |
| 84 | 2 623 716 | 7 393 581 | 3 386 170 | 5 165 343 | 2 160 504 | 20 729 314 |
| 85 | 2 523 472 | 7 457 663 | 3 753 172 | 4 631 049 | 1 941 770 | 20 307 126 |
| 86 | 2 240 052 | 7 703 059 | 4 109 647 | 4 179 503 | 2 013 695 | 20 245 956 |
| 87 | 2 455 161 | 8 204 726 | 4 572 419 | 5 388 656 | 1 815 985 | 22 436 947 |
| 88 | 2 537 735 | 8 245 449 | 4 823 523 | 6 186 979 | 1 559 389 | 23 353 075 |
| 89 | 2 321 491 | 8 121 831 | 5 257 210 | 4 936 490 | 1 788 404 | 22 425 426 |
| 1990 | 2 060 376 | 8 201 058 | 5 580 665 | 6 160 420 | 2 044 202 | 24 046 721 |
| 91 | 2 110 102 | 8 174 214 | 6 080 931 | 7 184 094 | 3 068 499 | 26 617 840 |
| 92 | 2 298 131 | 8 485 052 | 7 000 419 | 7 522 273 | 2 452 575 | 27 758 450 |
| 93 | 3 192 617 | 9 703 398 | 8 440 595 | 7 364 305 | 3 174 934 | 31 875 849 |
| 94 | 3 635 560 | 11 210 652 | 9 561 615 | 7 763 062 | 3 435 109 | 35 605 998 |
| 95 | 3 812 957 | 11 020 823 | 8 803 887 | 7 264 791 | 3 219 496 | 34 121 954 |
| 96 | 3 456 928 | 10 486 331 | 8 598 697 | 7 209 195 | 3 593 696 | 33 344 847 |
| 97 | 3 764 352 | 11 952 225 | 9 361 649 | 6 824 331 | 4 261 500 | 36 164 057 |
| 98 | 4 100 918 | 12 300 475 | 9 957 307 | 7 072 905 | 4 092 546 | 37 524 151 |
| 99 | 4 239 935 | 12 749 384 | 10 490 012 | 7 451 160 | 4 376 238 | 39 306 729 |
| 2000 | 4 562 569 | 13 335 055 | 9 963 783 | 8 112 244 | 3 528 925 | 39 502 576 |

E. Seaborne transports between Finland and foreign countries by groups of goods and share of Finnish tonnage, 1998 - 2000

Import

| Description | 2000 | | 1999 | | 1998 | |
|-------------------------------|-------------------|------------------------------|-------------------|------------------------------|-------------------|------------------------------|
| | tonnes | On Finnish vessels tonnes | tonnes | On Finnish vessels tonnes | tonnes | On Finnish vessels tonnes |
| Timber | 1 931 410 | 392 438 | 1 543 642 | 448 578 | 1 520 629 | 414 055 |
| Sawn wood | 13 695 | 6 162 | 34 286 | 9 585 | 38 791 | 3 734 |
| Wood pulp | 100 293 | 12 623 | 85 480 | 16 743 | 66 076 | 22 543 |
| Paper and paperboard | 82 650 | 53 287 | 40 980 | 6 334 | 35 307 | 15 608 |
| Veneers and plywood | 11 350 | 3 243 | 29 681 | 10 000 | 18 551 | 1 995 |
| Metals and metal manufactures | 972 951 | 292 663 | 907 950 | 248 247 | 1 136 207 | 323 190 |
| Chemicals | 1 894 982 | 189 084 | 1 320 003 | 87 586 | 1 778 377 | 127 419 |
| Fertilizers | 95 178 | 6 454 | 107 984 | 21 848 | 45 882 | 8 578 |
| Cereals | 293 761 | 37 084 | 338 509 | 29 990 | 386 095 | 62 286 |
| Mineral oils | 11 650 001 | 6 552 107 | 12 342 655 | 8 098 619 | 11 594 217 | 7 004 008 |
| Coal and coke | 5 558 943 | 4 081 507 | 3 827 685 | 2 999 866 | 4 962 427 | 3 534 264 |
| Ores and concentrates | 4 483 010 | 2 965 732 | 4 596 768 | 2 898 493 | 4 345 634 | 2 880 256 |
| Crude minerals and cement | 5 497 248 | 1 644 781 | 5 134 104 | 1 504 291 | 4 724 046 | 1 345 574 |
| General cargo | 7 712 513 | 3 049 811 | 7 152 928 | 3 462 131 | 7 759 855 | 3 772 622 |
| Other merchandise | 794 791 | 103 018 | 733 716 | 68 175 | 657 312 | 65 279 |
| Total | 41 092 776 | 19 389 994 | 38 196 371 | 19 910 486 | 39 069 406 | 19 581 411 |

Export

| Description | 2000 | | 1999 | | 1998 | |
|-------------------------------|-------------------|------------------------------|-------------------|------------------------------|-------------------|------------------------------|
| | tonnes | On Finnish vessels tonnes | tonnes | On Finnish vessels tonnes | tonnes | On Finnish vessels tonnes |
| Timber | 244 621 | 116 260 | 362 593 | 176 540 | 460 352 | 181 904 |
| Sawn wood | 4 562 569 | 358 348 | 4 239 935 | 245 753 | 4 100 918 | 255 656 |
| Wood pulp | 1 635 033 | 84 354 | 1 855 910 | 93 580 | 1 692 721 | 273 261 |
| Paper and paperboard | 10 855 964 | 4 509 413 | 10 009 519 | 4 233 542 | 9 679 489 | 3 851 911 |
| Veneers and plywood | 599 437 | 122 381 | 521 362 | 85 028 | 467 913 | 89 566 |
| Metals and metal manufactures | 2 532 698 | 1 252 597 | 2 604 950 | 1 103 845 | 2 394 634 | 964 347 |
| Chemicals | 2 817 828 | 260 862 | 1 994 539 | 247 960 | 2 211 101 | 295 120 |
| Fertilizers | 682 620 | 15 409 | 1 241 580 | 24 418 | 1 160 777 | 15 085 |
| Cereals | 269 527 | 23 665 | 369 735 | 30 660 | 454 119 | 63 850 |
| Mineral oils | 5 294 416 | 1 981 810 | 5 456 621 | 2 942 046 | 4 861 804 | 2 592 792 |
| Coal and coke | 11 339 | 2 158 | 61 599 | 8 285 | 73 968 | 30 712 |
| Ores and concentrates | 1 180 389 | 759 209 | 988 313 | 533 637 | 1 093 089 | 620 806 |
| Crude minerals and cement | 999 891 | 484 342 | 1 438 001 | 632 748 | 1 017 550 | 482 050 |
| General cargo | 7 431 085 | 2 875 629 | 7 885 062 | 3 548 629 | 7 562 673 | 3 571 738 |
| Other merchandise | 385 159 | 114 187 | 277 010 | 18 836 | 293 043 | 25 811 |
| Total | 39 502 576 | 12 960 624 | 39 306 729 | 13 925 507 | 37 524 151 | 13 314 609 |

F. Seaborne trade between Finland and foreign countries in 2000

| Country | Import tonnes | Export tonnes | Total tonnes | % |
|-----------------|-------------------|-------------------|-------------------|-------------|
| Sweden | 7 635 409 | 5 242 864 | 12 878 273 | 16,0 |
| Denmark | 2 861 464 | 1 438 559 | 4 300 023 | 5,3 |
| Germany | 4 816 617 | 10 407 985 | 15 224 602 | 18,9 |
| United Kingdom | 2 458 312 | 4 686 356 | 7 144 668 | 8,9 |
| Ireland | 109 684 | 153 473 | 263 157 | 0,3 |
| Netherlands | 2 202 599 | 3 006 063 | 5 208 662 | 6,5 |
| Belgium | 1 333 479 | 3 140 706 | 4 474 185 | 5,6 |
| France | 301 739 | 1 592 585 | 1 894 324 | 2,4 |
| Spain | 507 985 | 1 386 955 | 1 894 940 | 2,4 |
| Portugal | 151 177 | 205 213 | 356 390 | 0,4 |
| Italy | 12 036 | 328 569 | 340 605 | 0,4 |
| Greece | 33 188 | 166 791 | 199 979 | 0,2 |
| <i>EU total</i> | <i>22 423 689</i> | <i>31 756 119</i> | <i>54 179 808</i> | <i>67,2</i> |
| Norway | 4 489 447 | 633 069 | 5 122 516 | 6,4 |
| Iceland | 13 148 | 10 294 | 23 442 | 0,0 |
| Russia | 3 071 063 | 251 532 | 3 322 595 | 4,1 |
| Estonia | 2 691 182 | 1 164 187 | 3 855 369 | 4,8 |
| Latvia | 3 778 808 | 204 928 | 3 983 736 | 4,9 |
| Lithuania | 275 949 | 41 462 | 317 411 | 0,4 |
| Poland | 2 704 400 | 674 169 | 3 378 569 | 4,2 |
| Svitzerland | - | 10 681 | 10 681 | 0,0 |
| Croatia | 1 813 | 1 050 | 2 863 | 0,0 |
| Albania | - | 4 686 | 4 686 | 0,0 |
| Bulgaria | - | 1 188 | 1 188 | 0,0 |
| Romania | 8 790 | - | 8 790 | 0,0 |
| Georgia | - | 1 651 | 1 651 | 0,0 |
| Turkey | 70 176 | 114 980 | 185 156 | 0,2 |
| Egypt | 28 | 578 745 | 578 773 | 0,7 |
| Libya | - | 191 | 191 | 0,0 |
| Tunisia | - | 124 370 | 124 370 | 0,2 |
| Algeria | 10 455 | 230 473 | 240 928 | 0,3 |
| Marocco | 4 148 | 62 162 | 66 310 | 0,1 |
| Mauritania | 153 302 | - | 153 302 | 0,2 |
| Senegal | - | 427 | 427 | 0,0 |
| Ghana | 24 859 | 1 019 | 25 878 | 0,0 |
| Cote d'Ivoire | - | 7 596 | 7 596 | 0,0 |
| Nigeria | - | 1 090 | 1 090 | 0,0 |
| Cameroon | - | 8 210 | 8 210 | 0,0 |
| South Africa | 10 830 | 5 519 | 16 349 | 0,0 |
| Mozambique | 35 836 | - | 35 836 | 0,0 |
| Kenya | - | 70 065 | 70 065 | 0,1 |

F. (cont.)

| Country | Import tonnes | Export tonnes | Total tonnes | % |
|----------------------|-------------------|-------------------|-------------------|------------|
| Cyprus | 411 | 11 696 | 12 107 | 0,0 |
| Syria | - | 6 183 | 6 183 | 0,0 |
| Lebanon | - | 1 328 | 1 328 | 0,0 |
| Israel | 2 443 | 240 200 | 242 643 | 0,3 |
| Saudi Arabia | - | 111 511 | 111 511 | 0,1 |
| Yemen | - | 1 674 | 1 674 | 0,0 |
| Oman | - | 1 962 | 1 962 | 0,0 |
| United Arab Emirates | - | 8 292 | 8 292 | 0,0 |
| Iran | - | 6 033 | 6 033 | 0,0 |
| Pakistan | - | 2 000 | 2 000 | 0,0 |
| India | - | 42 168 | 42 168 | 0,1 |
| Sri Lanka | - | 4 412 | 4 412 | 0,0 |
| Malaysia | - | 35 622 | 35 622 | 0,0 |
| Singapore | - | 862 | 862 | 0,0 |
| Indonesia | 60 613 | 10 455 | 71 068 | 0,1 |
| Thailand | 8 | 35 689 | 35 697 | 0,0 |
| Philippines | - | 5 000 | 5 000 | 0,0 |
| Taiwan | - | 7 299 | 7 299 | 0,0 |
| China | 1 742 | 321 690 | 323 432 | 0,4 |
| Japan | 12 218 | 7 537 | 19 755 | 0,0 |
| Republic of Korea | - | 196 440 | 196 440 | 0,2 |
| Canada | 75 650 | 79 571 | 155 221 | 0,2 |
| United States | 829 687 | 2 359 796 | 3 189 483 | 4,0 |
| Mexico | 6 482 | 6 155 | 12 637 | 0,0 |
| El Salvador | - | 3 847 | 3 847 | 0,0 |
| Honduras | - | 44 | 44 | 0,0 |
| Dominican Republic | - | 5 866 | 5 866 | 0,0 |
| Jamaica | - | 876 | 876 | 0,0 |
| Netherlands Antilles | - | 1 133 | 1 133 | 0,0 |
| Colombia | - | 5 973 | 5 973 | 0,0 |
| Venezuela | - | 1 799 | 1 799 | 0,0 |
| Brazil | 99 629 | 4 580 | 104 209 | 0,1 |
| Argentina | 18 242 | 6 692 | 24 934 | 0,0 |
| Chile | 25 255 | - | 25 255 | 0,0 |
| Peru | 111 | 634 | 745 | 0,0 |
| Australia | 192 362 | 2 711 | 195 073 | 0,2 |
| New Zealand | - | 4 983 | 4 983 | 0,0 |
| Total | 41 092 776 | 39 502 576 | 80 595 352 | 100 |

G. Arrivals and departures in foreign traffic, 1985-2000

Arrivals

| Year | Passenger vessels | | Passenger/car ferries | | Cargo ferries | | Bulk carriers | | Other dry cargo vessels | | Tankers | | Other vessels | | Total | | | | | | |
|------|-------------------|-------------|-----------------------|-------------|---------------|-------------|---------------|-------------|-------------------------|-------------|--------------|-------------|---------------|-------------|--------------|-------------|-----|-------|--------|-------|--------|
| | Number | Net million | Cargo Number | Net million | Cargo Number | Net million | Cargo Number | Net million | Cargo Number | Net million | Cargo Number | Net million | Cargo Number | Net million | Cargo Number | Net million | | | | | |
| 1985 | 992 | 3,4 | 13 | 7 731 | 49,0 | 1 055 | 2 811 | 7,1 | 2 065 | 2 071 | 6,4 | 4 904 | 1 949 | 8,3 | 13 936 | 632 | 0,4 | 936 | 21 143 | 81,0 | 31 648 |
| 86 | 940 | 2,7 | - | 7 935 | 64,9 | 1 172 | 2 779 | 7,4 | 2 008 | 2 438 | 6,5 | 4 024 | 1 924 | 7,5 | 13 217 | 603 | 0,3 | 545 | 21 509 | 95,8 | 29 946 |
| 87 | 960 | 2,7 | - | 8 325 | 68,1 | 1 336 | 2 796 | 7,4 | 2 103 | 2 531 | 5,9 | 3 822 | 2 034 | 8,8 | 14 376 | 652 | 0,9 | 2 518 | 22 114 | 99,9 | 31 285 |
| 88 | 1 826 | 3,2 | - | 8 222 | 69,0 | 1 346 | 3 417 | 8,8 | 2 436 | 2 724 | 5,8 | 4 105 | 2 206 | 8,3 | 13 214 | 769 | 1,1 | 3 417 | 24 159 | 102,2 | 31 874 |
| 89 | 1 457 | 2,9 | - | 9 028 | 87,6 | 1 250 | 4 306 | 10,6 | 2 896 | 2 952 | 6,3 | 4 605 | 2 122 | 7,5 | 12 423 | 728 | 1,3 | 3 999 | 25 882 | 123,1 | 33 632 |
| 1990 | 1 827 | 8,7 | 37 | 9 073 | 96,0 | 963 | 4 688 | 13,2 | 3 043 | 2 686 | 6,6 | 5 449 | 2 298 | 8,7 | 12 822 | 776 | 1,0 | 3 854 | 26 571 | 140,8 | 34 825 |
| 91 | 2 319 | 10,3 | 34 | 8 777 | 103,9 | 832 | 4 545 | 13,2 | 2 670 | 2 582 | 6,7 | 5 011 | 2 205 | 8,7 | 13 282 | 410 | 0,5 | 1 792 | 25 734 | 149,7 | 32 277 |
| 92 | 2 396 | 5,2 | - | 8 893 | 107,1 | 877 | 4 954 | 14,9 | 2 846 | 2 809 | 6,0 | 6 183 | 2 299 | 8,4 | 12 611 | 566 | 0,9 | 3 566 | 27 352 | 149,6 | 32 090 |
| 93 | 2 117 | 5,2 | - | 9 101 | 112,1 | 1 025 | 5 589 | 15,6 | 2 992 | 1 894 | 5,8 | 6 215 | 2 240 | 7,9 | 11 536 | 621 | 1,0 | 4 105 | 28 180 | 156,5 | 32 560 |
| 94 | 2 070 | 2,3 | - | 8 880 | 101,9 | 1 179 | 5 860 | 17,2 | 3 652 | 1 482 | 6,3 | 7 550 | 2 350 | 8,8 | 14 080 | 657 | 1,2 | 4 691 | 28 849 | 148,2 | 38 638 |
| 95 | 1 971 | 1,3 | - | 10 242 | 117,8 | 1 700 | 5 782 | 20,6 | 3 501 | 893 | 5,0 | 8 244 | 2 166 | 8,3 | 13 021 | 831 | 1,3 | 4 956 | 30 129 | 166,3 | 37 036 |
| 96 | 2 182 | 2,4 | 3 | 9 460 | 116,5 | 1 377 | 5 710 | 22,6 | 4 155 | 965 | 5,4 | 7 066 | 1 969 | 7,7 | 12 011 | 638 | 1,2 | 4 968 | 28 559 | 167,4 | 36 945 |
| 97 | 2 275 | 1,7 | - | 9 901 | 117,5 | 1 607 | 6 088 | 24,9 | 5 079 | 795 | 5,3 | 8 455 | 1 892 | 7,5 | 10 940 | 767 | 1,3 | 5 065 | 30 650 | 172,1 | 39 018 |
| 98 | 1 640 | 2,0 | - | 10 945 | 119,6 | 1 515 | 6 673 | 28,0 | 5 412 | 663 | 4,1 | 8 717 | 1 815 | 7,8 | 13 111 | 815 | 1,3 | 5 065 | 31 646 | 177,8 | 39 069 |
| 99 | 2 141 | 2,2 | - | 12 313 | 144,8 | 1 410 | 6 467 | 28,7 | 4 811 | 836 | 3,7 | 8 649 | 1 902 | 8,3 | 13 663 | 899 | 1,8 | 5 023 | 33 868 | 206,1 | 38 196 |
| 2000 | 2 300 | 3,1 | - | 13 828 | 161,6 | 1 576 | 6 740 | 32,0 | 5 474 | 774 | 3,5 | 9 941 | 2 038 | 8,4 | 13 345 | 1 381 | 1,6 | 5 497 | 36 370 | 226,4 | 41 093 |

Departures

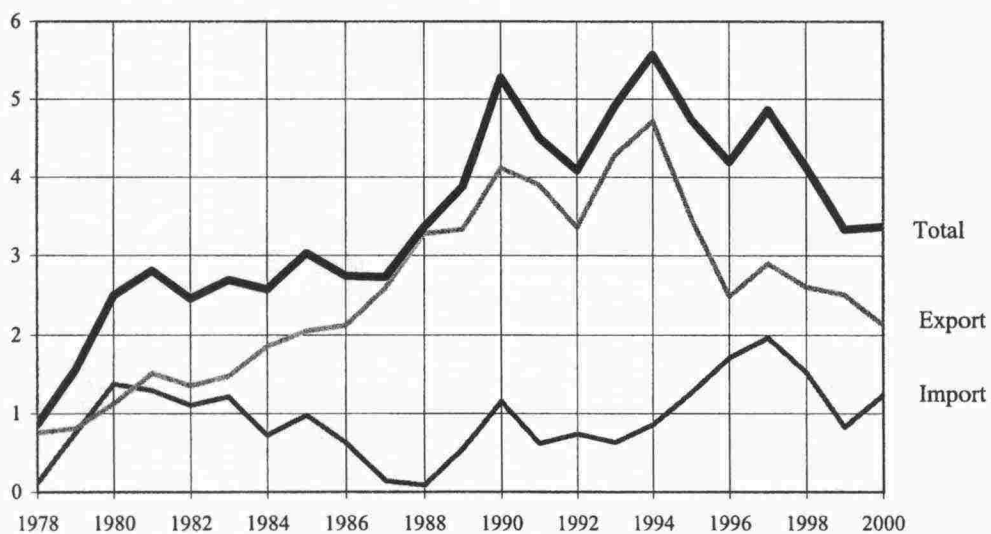
| Year | Passenger vessels | | Passenger/car ferries | | Cargo ferries | | Bulk carriers | | Other dry cargo vessels | | Tankers | | Other vessels | | Total | | | | | | |
|------|-------------------|-------------|-----------------------|-------------|---------------|-------------|---------------|-------------|-------------------------|-------------|--------------|-------------|---------------|-------------|--------------|-------------|-----|-------|--------|-------|--------|
| | Number | Net million | Cargo Number | Net million | Cargo Number | Net million | Cargo Number | Net million | Cargo Number | Net million | Cargo Number | Net million | Cargo Number | Net million | Cargo Number | Net million | | | | | |
| 1985 | 985 | 3,2 | 31 | 7 742 | 49,3 | 1 051 | 2 799 | 7,1 | 5 636 | 2 093 | 6,3 | 3 154 | 1 888 | 8,3 | 4 550 | 621 | 0,4 | 107 | 21 069 | 81,1 | 20 307 |
| 86 | 939 | 2,7 | - | 7 934 | 65,1 | 1 239 | 2 783 | 7,4 | 5 732 | 2 394 | 6,4 | 2 875 | 1 899 | 7,4 | 4 141 | 631 | 0,3 | 339 | 21 473 | 95,8 | 20 246 |
| 87 | 967 | 2,8 | - | 8 338 | 68,5 | 1 356 | 2 806 | 7,4 | 5 903 | 2 509 | 5,8 | 3 232 | 1 950 | 8,4 | 5 366 | 663 | 0,9 | 319 | 22 082 | 100,1 | 22 437 |
| 88 | 1 833 | 3,3 | 4 | 8 229 | 69,3 | 1 274 | 3 416 | 8,8 | 6 434 | 2 696 | 5,8 | 3 364 | 2 120 | 8,0 | 6 062 | 753 | 1,1 | 65 | 24 057 | 102,3 | 23 353 |
| 89 | 1 455 | 2,9 | 1 | 8 992 | 86,6 | 1 064 | 4 233 | 10,4 | 6 456 | 2 906 | 6,2 | 3 757 | 2 065 | 7,3 | 4 660 | 740 | 1,3 | 90 | 25 721 | 121,7 | 22 425 |
| 1990 | 1 828 | 8,8 | 31 | 9 124 | 97,4 | 957 | 4 595 | 13,0 | 7 312 | 2 604 | 6,4 | 5 920 | 2 239 | 8,4 | 5 813 | 788 | 1,0 | 113 | 26 478 | 142,4 | 24 047 |
| 91 | 2 317 | 10,2 | 41 | 8 754 | 103,4 | 922 | 4 545 | 13,3 | 7 655 | 2 526 | 6,7 | 6 308 | 2 160 | 8,5 | 6 940 | 404 | 0,5 | 86 | 25 712 | 149,3 | 26 617 |
| 92 | 2 404 | 5,3 | - | 8 924 | 107,3 | 982 | 4 926 | 14,8 | 8 532 | 2 757 | 5,9 | 6 193 | 2 265 | 8,2 | 7 109 | 567 | 0,9 | 251 | 27 418 | 149,6 | 27 758 |
| 93 | 2 129 | 5,3 | 2 | 9 069 | 114,0 | 1 191 | 5 586 | 15,5 | 9 427 | 1 891 | 5,8 | 4 878 | 2 234 | 7,8 | 6 857 | 620 | 1,0 | 352 | 28 135 | 158,3 | 31 876 |
| 94 | 2 066 | 2,3 | - | 8 894 | 106,5 | 1 321 | 5 823 | 17,1 | 10 572 | 1 478 | 6,3 | 4 960 | 2 328 | 8,7 | 6 999 | 656 | 1,2 | 365 | 28 791 | 152,6 | 35 606 |
| 95 | 1 958 | 1,3 | - | 10 223 | 121,6 | 2 033 | 5 806 | 20,6 | 9 524 | 889 | 5,0 | 4 129 | 1 863 | 8,1 | 6 110 | 857 | 1,3 | 463 | 30 077 | 169,9 | 34 122 |
| 96 | 2 184 | 2,4 | 16 | 9 460 | 119,9 | 1 632 | 5 653 | 22,4 | 10 026 | 961 | 5,3 | 3 794 | 1 947 | 7,9 | 6 375 | 644 | 1,2 | 227 | 28 488 | 170,8 | 33 345 |
| 97 | 2 244 | 1,7 | - | 9 880 | 121,6 | 1 808 | 6 077 | 24,9 | 11 391 | 794 | 5,4 | 3 372 | 1 883 | 7,4 | 6 310 | 798 | 1,4 | 253 | 30 581 | 176,2 | 36 164 |
| 98 | 1 634 | 2,0 | 2 | 10 953 | 123,6 | 1 867 | 6 641 | 27,9 | 12 162 | 675 | 4,2 | 3 417 | 1 827 | 7,8 | 6 297 | 814 | 1,3 | 324 | 31 666 | 181,9 | 37 524 |
| 99 | 2 149 | 2,2 | - | 12 312 | 140,9 | 1 755 | 6 485 | 28,8 | 12 352 | 861 | 3,8 | 2 965 | 1 892 | 8,3 | 6 907 | 914 | 1,8 | 1 067 | 33 897 | 202,3 | 39 306 |
| 2000 | 2 304 | 3,2 | - | 13 617 | 158,5 | 1 979 | 6 742 | 32,0 | 13 139 | 801 | 3,6 | 2 640 | 2 061 | 8,5 | 7 270 | 1 375 | 1,6 | 202 | 36 179 | 223,6 | 39 502 |

H. Transit traffic through Finnish ports 1978 - 2000

| Year | Import tonnes | Export tonnes | Total tonnes |
|------|------------------|------------------|-----------------|
| 1978 | 111 340 | 749 272 | 860 612 |
| 79 | 751 851 | 808 761 | 1 560 612 |
| 1980 | 1 375 293 | 1 124 093 | 2 499 386 |
| 81 | 1 294 238 | 1 512 573 | 2 806 811 |
| 82 | 1 104 280 | 1 354 951 | 2 459 231 |
| 83 | 1 212 332 | 1 477 153 | 2 689 485 |
| 84 | 719 527 | 1 856 050 | 2 575 577 |
| 85 | 976 282 | 2 053 514 | 3 029 796 |
| 86 | 618 334 | 2 123 065 | 2 741 399 |
| 87 | 137 833 | 2 588 625 | 2 726 458 |
| 88 | 85 485 | 3 277 497 | 3 362 982 |
| 89 | 545 644 | 3 330 007 | 3 875 651 |
| 1990 | 1 153 699 | 4 118 771 | 5 272 470 |
| 91 | 610 780 | 3 899 505 | 4 510 285 |
| 92 | 735 349 | 3 353 619 | 4 088 968 |
| 93 | 625 371 | 4 287 834 | 4 913 205 |
| 94 | 854 211 | 4 719 914 | 5 574 125 |
| 95 | 1 260 838 | 3 486 533 | 4 747 371 |
| 96 | 1 710 782 | 2 487 510 | 4 198 292 |
| 97 | 1 964 080 | 2 897 391 | 4 861 471 |
| 98 | 1 522 810 | 2 604 729 | 4 127 539 |
| 99 | 824 658 | 2 506 765 | 3 331 423 |
| 2000 | 1 234 139 | 2 132 388 | 3 366 527 |

I. Transit traffic through Finnish ports, 1978-2000

Million tonnes



J. Passenger traffic between Finland and foreign countries, 1960-2000

| Year | Passengers arrived | | | Passengers departed | | | Total |
|------|--------------------|-----------|------|---------------------|-----------|------|------------|
| | On Finnish vessels | | | On Finnish vessels | | | |
| | Number | Number | % | Number | Number | % | |
| 1960 | 338 604 | 209 517 | 61,9 | 338 621 | 209 576 | 61,9 | 677 225 |
| 61 | 454 917 | 311 852 | 68,6 | 449 642 | 308 838 | 68,7 | 904 559 |
| 62 | 513 075 | 340 910 | 66,4 | 504 913 | 344 346 | 68,2 | 1 017 988 |
| 63 | 521 211 | 389 538 | 74,7 | 518 203 | 394 100 | 76,1 | 1 039 414 |
| 64 | 718 381 | 513 883 | 71,5 | 714 296 | 514 333 | 72,0 | 1 432 677 |
| 65 | 1 003 205 | 630 908 | 62,9 | 1 010 885 | 644 514 | 63,8 | 2 014 090 |
| 66 | 916 958 | 633 652 | 69,1 | 917 035 | 647 185 | 70,6 | 1 833 993 |
| 67 | 933 259 | 686 148 | 73,5 | 931 979 | 691 408 | 74,2 | 1 865 238 |
| 68 | 1 110 741 | 836 345 | 75,3 | 1 106 453 | 847 122 | 76,6 | 2 217 194 |
| 69 | 1 262 413 | 961 451 | 76,2 | 1 270 194 | 959 349 | 75,5 | 2 532 607 |
| 1970 | 1 493 559 | 1 162 868 | 77,9 | 1 499 185 | 1 171 744 | 78,2 | 2 992 744 |
| 71 | 1 921 222 | 1 587 341 | 82,6 | 1 890 892 | 1 540 944 | 81,5 | 3 812 114 |
| 72 | 2 525 786 | 1 914 786 | 75,8 | 2 489 275 | 1 936 502 | 77,8 | 5 015 061 |
| 73 | 2 878 659 | 2 234 517 | 77,6 | 2 852 081 | 2 223 903 | 78,0 | 5 730 740 |
| 74 | 2 576 775 | 2 068 717 | 80,3 | 2 586 480 | 2 051 917 | 79,3 | 5 163 255 |
| 75 | 2 676 407 | 2 040 757 | 76,2 | 2 711 329 | 2 081 096 | 76,8 | 5 387 736 |
| 76 | 2 581 663 | 2 049 733 | 79,4 | 2 597 969 | 2 055 669 | 79,1 | 5 179 632 |
| 77 | 2 559 268 | 2 045 998 | 79,9 | 2 594 187 | 2 020 521 | 77,9 | 5 153 455 |
| 78 | 2 849 282 | 2 227 401 | 78,2 | 2 878 834 | 2 209 452 | 76,7 | 5 728 116 |
| 79 | 3 037 356 | 2 392 097 | 78,8 | 3 062 370 | 2 410 112 | 78,7 | 6 099 726 |
| 1980 | 2 940 468 | 2 204 645 | 75,0 | 2 939 663 | 2 175 776 | 74,0 | 5 880 131 |
| 81 | 3 364 143 | 2 576 225 | 76,6 | 3 372 092 | 2 569 253 | 76,2 | 6 736 235 |
| 82 | 3 399 577 | 2 534 746 | 74,6 | 3 435 149 | 2 621 133 | 76,3 | 6 834 726 |
| 83 | 3 439 480 | 2 682 096 | 78,0 | 3 493 497 | 2 682 759 | 76,8 | 6 932 977 |
| 84 | 3 535 116 | 2 773 045 | 78,4 | 3 570 164 | 2 682 431 | 75,1 | 7 105 280 |
| 85 | 3 725 000 | 2 692 774 | 72,3 | 3 739 267 | 2 740 925 | 73,3 | 7 464 267 |
| 86 | 4 020 333 | 2 923 726 | 72,7 | 4 028 837 | 2 926 457 | 72,6 | 8 049 170 |
| 87 | 4 149 897 | 2 689 086 | 64,8 | 4 179 601 | 2 780 170 | 66,5 | 8 329 498 |
| 88 | 4 413 599 | 2 930 860 | 66,4 | 4 469 411 | 2 873 283 | 64,3 | 8 883 010 |
| 89 | 5 094 654 | 3 293 424 | 64,6 | 5 100 447 | 3 323 737 | 65,2 | 10 195 101 |
| 1990 | 5 400 758 | 3 307 960 | 61,2 | 5 433 268 | 3 346 699 | 61,6 | 10 834 026 |
| 91 | 6 178 140 | 3 745 922 | 60,6 | 6 212 620 | 3 918 834 | 63,1 | 12 390 760 |
| 92 | 6 501 136 | 3 871 321 | 59,5 | 6 529 383 | 3 889 960 | 59,6 | 13 030 519 |
| 93 | 6 704 947 | 4 050 922 | 60,4 | 6 704 770 | 4 056 232 | 60,5 | 13 409 717 |
| 94 | 6 242 789 | 4 122 205 | 66,0 | 6 221 862 | 4 228 068 | 68,0 | 12 464 651 |
| 95 | 6 977 694 | 4 725 180 | 67,7 | 6 932 656 | 4 832 408 | 69,7 | 13 910 350 |
| 96 | 7 045 124 | 4 930 496 | 70,0 | 7 006 872 | 5 032 981 | 71,8 | 14 051 996 |
| 97 | 7 616 874 | 5 155 735 | 67,7 | 7 573 890 | 5 292 630 | 69,9 | 15 190 764 |
| 98 | 8 011 969 | 5 306 769 | 66,2 | 7 974 119 | 5 419 793 | 68,0 | 15 986 088 |
| 99 | 8 093 942 | 5 362 612 | 66,3 | 8 050 631 | 5 469 963 | 67,9 | 16 144 573 |
| 2000 | 8 008 337 | 4 877 435 | 60,9 | 7 956 107 | 4 986 690 | 62,7 | 15 964 444 |

K. Passenger traffic between Finland and foreign countries, 1960 - 2000

Million passengers

