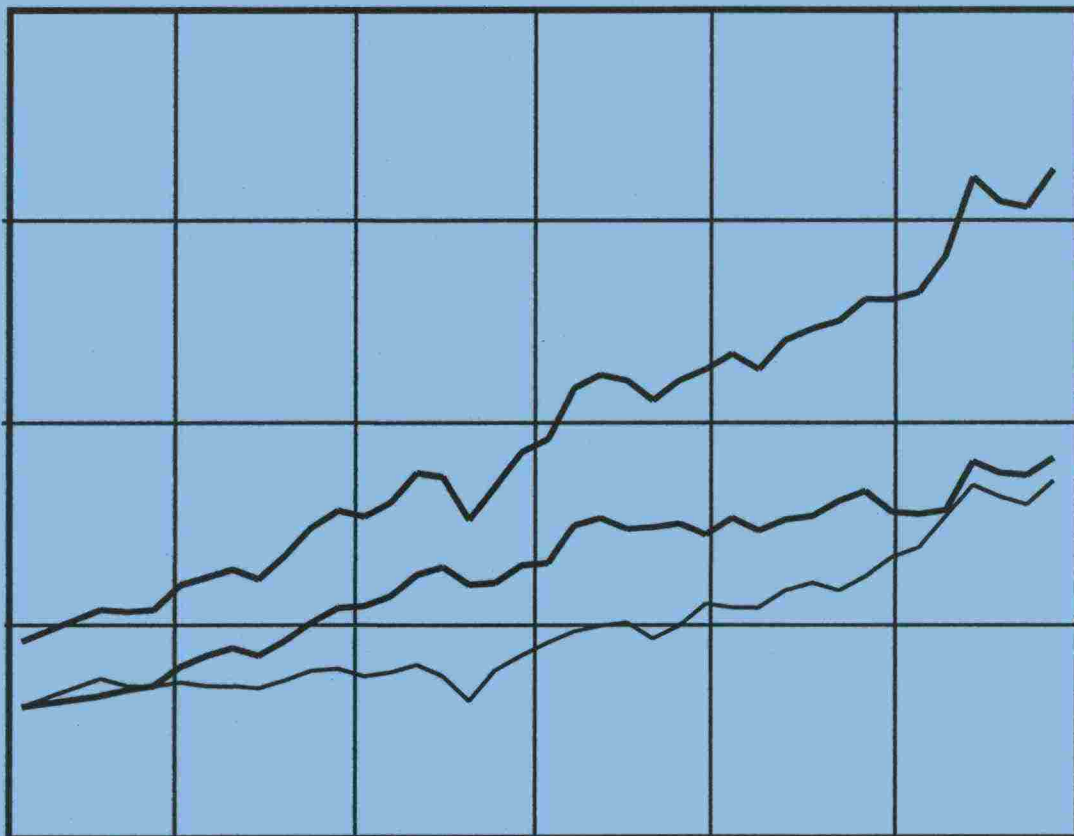


# Statistics on Shipping between Finland and Foreign Countries 1997



Statistics from the Finnish Maritime Administration 6/1998

**Statistics on Shipping between Finland and Foreign Countries 1997**

## INTRODUCTION

This statistical review is an English summary of the Finnish Maritime Administration's annual statistics publication 4/1998 under the title "Shipping between Finland and Foreign countries 1997", which is in Finnish, Swedish and partly in English.

This English-language statistical review for 1997 is published for the fourth time. It contains time series for Finland's international shipping in tables and diagrams. Detailed information for transport exclusively in 1997 is available in the appendices of the statistical publication "Shipping between Finland and Foreign Countries 1997".

For further information, please contact:

Finnish Maritime Administration  
Statistics Division  
PO Box 171  
FIN-00181 Helsinki  
Finland

Mr Antti Arkima

Tel. +358 204 48 4377

Telefax +358 204 48 4640

e-mail Antti.Arkima@fma.fi

## **PRODUCT PRESENTATION**

The term shipping statistics is used for statistics on the transport by sea of cargoes and passengers between Finland and foreign countries as well as statistics on vessels in international transport calling at Finnish ports.

The Finnish Maritime Administration has produced shipping statistics since 1918. The purpose is to serve the makers of shipping policy as efficiently as possible by generating statistical information for their use in planning, monitoring, supervision and decision-making. Industry, trade, research and the shipping industry also need statistical data on shipping.

### **Collecting data**

Whenever a Finnish or foreign vessel engaged in international shipping arrives at or leaves a Finnish port, its captain or, as is more often the case, its agent is obliged to supply the Finnish Maritime Administration with information on the vessel and its cargo according to the ports where it was loaded or unloaded. The information is given in machine language or on an arrival/departure notification form. These data are supplemented by reports sent in by the port authorities. Currently the data is collected in machine language within the framework of the nation-wide Portnet system.

### **The information content**

The shipping statistics cover all cargoes loaded and unloaded in Finnish ports, including transit cargoes en route to third countries as well as cargoes loaded in vehicles and containers. Statistics on pure transit traffic and on cargoes in vehicles and containers are also given separately.

The statistics for passenger traffic covers information on passenger vessels and car ferries as well as passengers travelling on cargo vessels that regularly carry passengers. Passengers on cruise liners that call at Finnish ports are counted as both arriving in and departing from Finland.

The tonnage of the vessels in the vessel traffic statistics is given in net figures as most navigation charges (including fairway charges, pilotage and harbour dues) are set according to the net tonnage.

## **SIGNIFICANT GROWTH IN GOODS VOLUMES AND PASSENGER NUMBERS**

The number of seaborne transports reached a new record in 1997. Exports grew by 8.5 % and imports by 5.6% from the year before. International cargo shipment in Finnish ports has increased by nearly one million tons since the previous record-breaking year 1994.

The share of Finnish tonnage in international shipments has continued its growth. Last year 42.8% of goods were carried by Finnish tonnage. Finland's own international shipments accounted for 70.3 million tons.

### **Increase in export of forestry products and general cargo, decrease in import of oil products and crude oil**

International goods traffic through the ports last year totalled 75.2 million tons. The increase from the previous year was 4.9 million tons. Of the quantities transported through the ports, 4.9 million tons consisted of transit shipments.

Exports comprised 36.2 million tons, compared with 33.3 million tons the previous year. This meant an increase by 2.8 million tons. There was an increase in the export of forestry products, especially paper. Export of paper totalled over 9 million tons, which is 1.4 million tons more than in the previous year. There was a significant increase in the export of general cargo and crude minerals, too. Of exports, 33.3 million tons consisted of Finnish international trade shipments and 2.9 million tons comprised transit shipments.

Imports amounted to 39 million tons. Imports were up by 2.1 million tons compared with the previous year. There was an increase above all in the import of general cargo and crude minerals. The import of general cargo amounted to 7.9 million tons. The import of crude oil and oil products decreased by one million tons to 9.5 million tons. Transit shipments accounted for 2 million tons of imports.

### **Increase in transit shipments**

Transit shipments totalled 4.9 million tons. This meant an increase by 15.8 % from the year before. Yet, the transit shipments did not reach the numbers of the record-breaking year 1994, when they totalled 5.6 million tons. The major part of transit shipments consists of export, even though in recent years the share of import shipments has grown. The bulk of the exports consists of chemicals, fertilisers and oil products exported through Finnish ports to continental Europe. Exports increased by 0.4 million tons while transit shipments of oil products and fertilisers grew most significantly. The import comprises mainly general cargo, which is forwarded to Russia by lorries.

Transit shipments were mostly carried out through a handful of ports (Kotka and Hamina), where transit business accounts for a large proportion of the total. The port of Helsinki plays an important part in the transit shipments of general cargo.

### **Rise in the proportion carried by Finnish tonnage**

The share of Finnish tonnage in seaborne transports was 42.8% (42.2% in 1996, 40.6% 1995). Finnish vessels accounted for almost 51.7 % of all import shipments, their share of the import of coal, crude oil and general cargo was very high.

Finnish vessels handled 33.3 % of export shipments. The decline in the share handled by Finnish tonnage, which began in 1984, appears to have halted. The share of Finnish tonnage has remained approximately one third of all export shipments.

In 1997 Finnish tonnage carried 32.2 million tons of goods between Finland and the rest of the world. This is an all-time record.

### **Ten biggest ports handled over 75% of all shipments**

In 1997 international cargo shipments passed through a total of 59 ports. However, the shipments were concentrated in the hands of the bigger ports; the ten biggest ports handled 56.7 million tons of cargo, which is 75.2% of all international cargo shipments. The biggest ports were Helsinki (10.1 million tons), Sköldvik (9.9 million tons) and Kotka (7.9 million tons).

The biggest export harbours were Kotka (5.5 million tons), Helsinki (4.3 million tons) and Hamina (3.8 million tons). The biggest import harbours were Sköldvik (6.7 million tons), Helsinki (5.8 million tons) and Rautaruukki (4.3 million tons).

In Helsinki the shipments consisted mainly of general cargo and coal, in Sköldvik of oil, in Kotka and Hamina of forest products and in Rautaruukki of ores and metal manufactures.

Shipments between domestic ports totalled 7 million tons, most of which consisted of fuel and timber.

Traffic on the Saimaa Canal in 1997 totalled 1.55 million tons, of which shipments to and from foreign countries accounted for 1.42 million tons. Shipments on the canal increased by 8%, that is, by 116,000 tons, on the previous year.

### **A new record in the number of passengers carried**

In 1997 the passenger traffic between Finland and foreign countries increased by more than one million passengers. The number of passengers carried totalled 15.2 million passengers.

The increase in passenger traffic in the 1990s is mainly due to the dramatic increase in traffic to and from Tallinn, Estonia. In 1997, 5.3 million passengers were carried between Helsinki and Tallinn, which is 35% of the passenger traffic between Finland and foreign countries.

However, the traffic to and from Sweden, which in 1997 totalled 9.4 million passengers, still has a dominant position. The share of the Finland-Sweden routes in overall passenger business was 62 %.

In the passenger traffic to and from Germany there was a change-over to cargo ferries which also carry passengers. In 1997, 217,000 passengers were carried on this route.

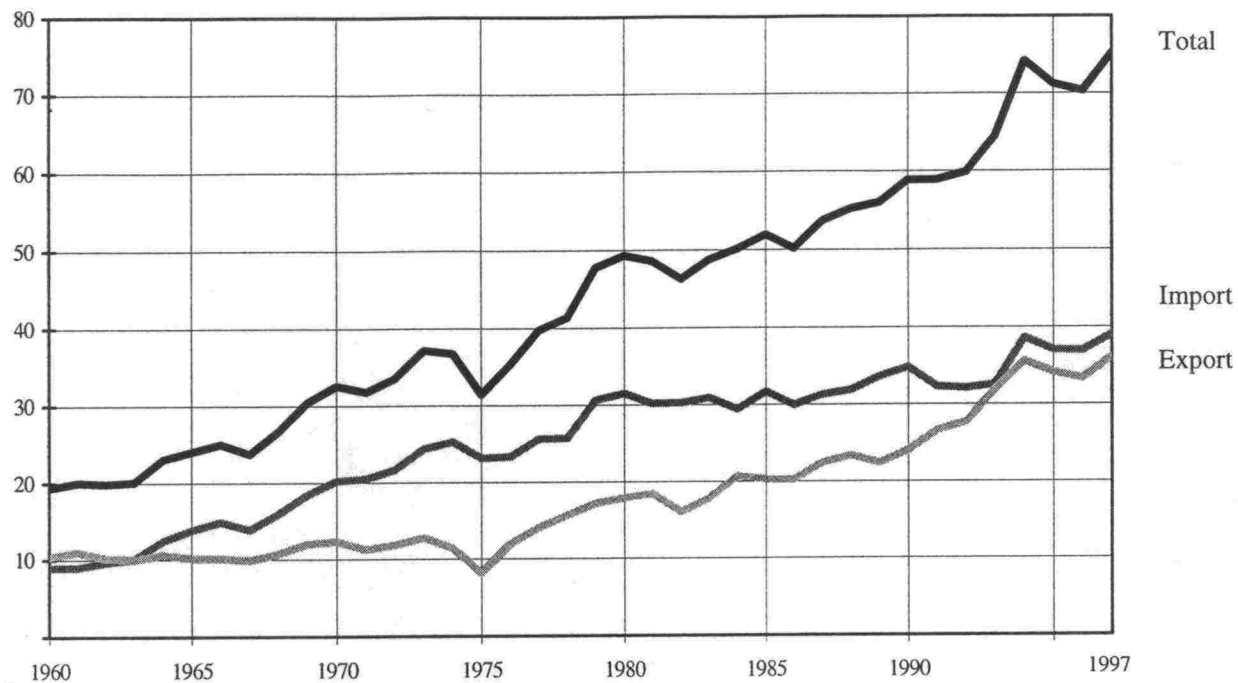
## A. Seaborne transports between Finland and foreign countries, 1960-1997

Year	Import			Export			Total		
	tonnes	On Finnish vessels tonnes	%	tonnes	On Finnish vessels tonnes	%	tonnes	On Finnish vessels tonnes	%
1960	8 955 490	5 373 054	60,0	10 399 690	3 554 098	34,2	19 355 180	8 927 152	46,1
61	8 992 685	5 710 718	63,5	11 025 990	3 992 647	36,2	20 018 675	9 703 365	48,5
62	9 671 578	6 285 427	65,0	10 184 167	3 981 824	39,1	19 855 745	10 267 251	51,7
63	10 047 891	6 615 438	65,8	10 032 012	4 000 400	39,9	20 079 903	10 615 838	52,9
64	12 462 389	7 838 276	62,9	10 619 002	4 548 417	42,8	23 081 391	12 386 693	53,7
65	13 868 394	8 304 382	59,9	10 178 070	4 500 489	44,2	24 046 464	12 804 871	53,3
66	14 911 041	8 632 273	57,9	10 130 284	4 497 570	44,4	25 041 325	13 129 843	52,4
67	13 902 140	8 278 698	59,5	9 861 315	4 492 922	45,6	23 763 455	12 771 620	53,7
68	15 957 992	8 734 088	54,7	10 753 595	4 734 097	44,0	26 711 587	13 468 185	50,4
69	18 419 478	9 785 779	53,1	12 033 042	5 262 604	43,7	30 452 520	15 048 383	49,4
1970	20 179 806	10 624 933	52,7	12 359 692	5 200 967	42,1	32 539 498	15 825 900	48,6
71	20 505 729	10 198 217	49,7	11 247 482	4 711 973	41,9	31 753 211	14 910 190	47,0
72	21 647 007	11 198 425	51,7	11 883 405	5 140 029	43,3	33 530 412	16 338 454	48,7
73	24 400 050	12 835 850	52,6	12 791 947	6 120 617	47,8	37 191 997	18 956 467	51,0
74	25 305 879	13 486 367	53,3	11 440 457	5 714 965	50,0	36 746 336	19 201 332	52,3
75	23 175 298	13 259 771	57,2	8 216 782	4 272 837	52,0	31 392 080	17 532 608	55,9
76	23 315 627	11 996 673	51,5	11 997 152	5 282 529	44,0	35 312 779	17 279 202	48,9
77	25 629 621	11 843 467	46,2	14 086 764	5 662 587	40,2	39 716 385	17 506 054	44,1
78	25 723 429	13 105 159	50,9	15 638 566	7 099 651	45,4	41 361 995	20 204 810	48,8
79	30 638 664	15 951 702	52,1	17 187 594	7 225 635	42,0	47 826 258	23 177 337	48,5
1980	31 470 022	14 428 682	45,8	17 900 110	6 633 713	37,1	49 370 132	21 062 395	42,7
81	30 177 916	15 454 560	51,2	18 419 447	8 638 810	46,9	48 597 363	24 093 370	49,6
82	30 259 848	15 517 461	51,3	16 039 886	7 719 070	48,1	46 299 734	23 236 531	50,2
83	30 914 693	14 971 348	48,4	17 844 858	8 302 024	46,5	48 759 551	23 273 372	47,7
84	29 417 598	14 885 728	50,6	20 729 314	9 684 108	46,7	50 146 912	24 569 836	49,0
85	31 647 531	14 561 257	46,0	20 307 126	8 498 273	41,8	51 954 657	23 059 530	44,4
86	29 946 090	14 887 336	49,7	20 245 956	7 662 184	37,8	50 192 046	22 549 520	44,9
87	31 284 557	15 770 055	50,4	22 436 947	8 011 157	35,7	53 721 504	23 781 212	44,3
88	31 873 844	16 422 987	51,5	23 353 075	7 646 659	32,7	55 226 919	24 069 646	43,6
89	33 631 729	17 068 791	50,8	22 425 426	6 684 424	29,8	56 057 155	23 753 215	42,4
1990	34 824 700	13 103 294	37,6	24 046 721	7 252 334	30,2	58 871 421	20 355 628	34,6
91	32 277 120	12 145 669	37,6	26 617 840	8 001 534	30,1	58 894 960	20 147 203	34,2
92	32 090 079	12 667 725	39,5	27 758 450	8 302 240	29,9	59 848 529	20 969 965	35,0
93	32 560 115	15 910 954	48,9	31 875 849	9 345 083	29,3	64 435 964	25 256 037	39,2
94	38 637 495	18 113 632	46,9	35 605 998	10 768 137	30,2	74 243 493	28 881 769	38,9
95	37 036 219	18 066 162	48,8	34 121 954	10 811 101	31,7	71 158 173	28 877 263	40,6
96	36 944 564	18 692 722	50,6	33 344 847	10 948 852	32,8	70 289 411	29 641 574	42,2
97	39 018 094	20 157 606	51,7	36 164 057	12 024 615	33,3	75 182 151	32 182 221	42,8



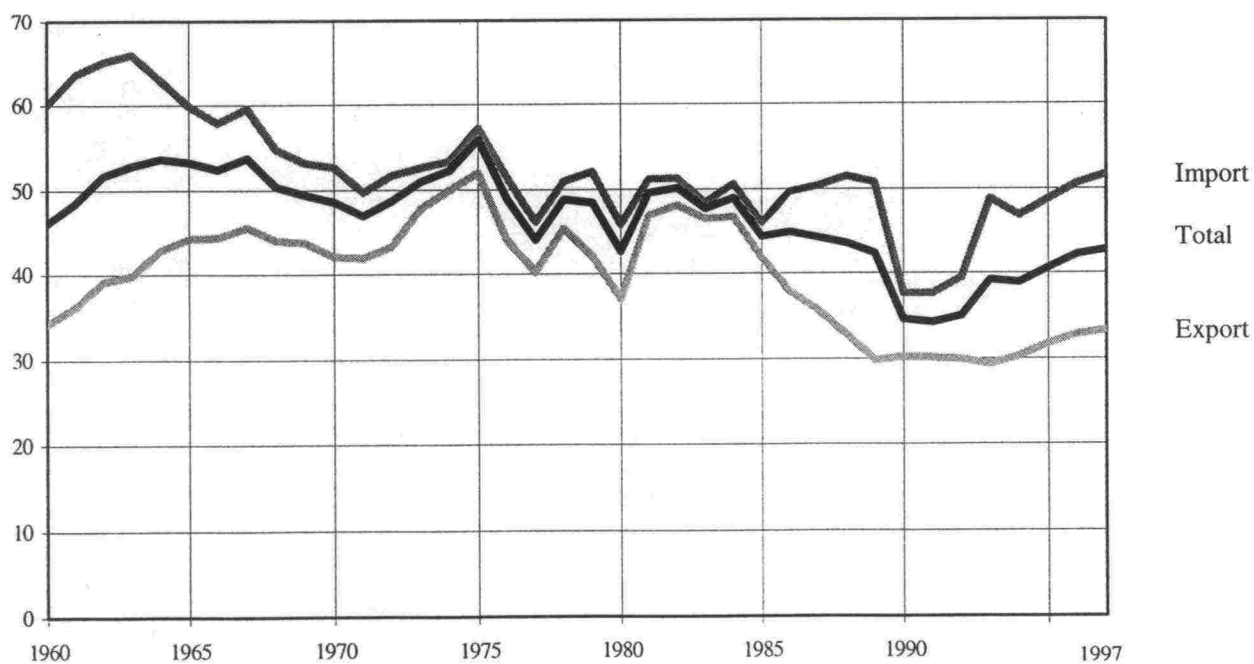
### B. Seaborne transports between Finland and foreign countries, 1960-1997

Million tonnes



### C. Percentage of goods carried by Finnish vessels, 1960-1997

%



## D. Seaborne transports between Finland and foreign countries by type of cargo, 1980 - 1997

Import						
Year	Petroleum tonnes	Coal and coke tonnes	Other dry bulk* tonnes	General cargo and metals tonnes	Other imports tonnes	Total tonnes
1980	14 703 803	5 093 607	6 143 015	3 939 819	1 589 778	31 470 022
81	12 431 566	6 134 316	5 466 835	3 731 636	2 413 563	30 177 916
82	11 514 530	5 455 419	5 984 606	3 619 614	3 685 679	30 259 848
83	12 732 480	5 022 889	5 177 304	3 496 975	4 485 045	30 914 693
84	12 390 896	4 320 257	5 261 293	3 300 751	4 144 401	29 417 598
85	12 837 757	6 002 835	5 529 153	3 974 310	3 303 476	31 647 531
86	12 188 465	5 764 128	5 927 540	3 675 391	2 390 566	29 946 090
87	13 162 996	5 586 041	5 865 500	4 020 859	2 649 161	31 284 557
88	12 129 775	5 541 130	6 796 563	4 475 168	2 931 208	31 873 844
89	11 287 631	6 318 238	7 506 404	5 068 318	3 451 138	33 631 729
1990	11 505 550	6 713 255	8 174 677	4 833 488	3 597 730	34 824 700
91	12 167 119	6 095 082	7 141 421	4 070 944	2 802 554	32 277 120
92	11 362 865	4 677 491	7 754 238	4 275 500	4 019 985	32 090 079
93	10 468 672	6 179 815	8 010 681	4 837 798	3 063 149	32 560 115
94	12 666 602	8 365 029	8 234 570	6 262 958	3 108 336	38 637 495
95	11 724 523	7 051 134	7 532 475	7 017 451	3 710 636	37 036 219
96	10 754 926	7 600 049	8 125 797	7 558 087	2 905 705	36 944 564
97	9 462 284	7 530 127	9 197 189	8 939 038	3 889 456	39 018 094

\* fertilizers, ores and concentrates, crude minerals, cereals

Export						
Year	Sawn wood tonnes	Other forest industry products tonnes	General cargo and metals tonnes	Petroleum and chemicals tonnes	Other exports tonnes	Total tonnes
1980	3 696 227	7 434 221	2 458 045	3 245 976	1 065 641	17 900 110
81	2 824 519	7 375 185	2 929 155	3 786 708	1 503 880	18 419 447
82	2 460 917	6 183 058	2 760 104	3 105 493	1 530 314	16 039 886
83	2 656 471	6 544 394	3 195 573	4 118 469	1 329 951	17 844 858
84	2 623 716	7 393 581	3 386 170	5 165 343	2 160 504	20 729 314
85	2 523 472	7 457 663	3 753 172	4 631 049	1 941 770	20 307 126
86	2 240 052	7 703 059	4 109 647	4 179 503	2 013 695	20 245 956
87	2 455 161	8 204 726	4 572 419	5 388 656	1 815 985	22 436 947
88	2 537 735	8 245 449	4 823 523	6 186 979	1 559 389	23 353 075
89	2 321 491	8 121 831	5 257 210	4 936 490	1 788 404	22 425 426
1990	2 060 376	8 201 058	5 580 665	6 160 420	2 044 202	24 046 721
91	2 110 102	8 174 214	6 080 931	7 184 094	3 068 499	26 617 840
92	2 298 131	8 485 052	7 000 419	7 522 273	2 452 575	27 758 450
93	3 192 617	9 703 398	8 440 595	7 364 305	3 174 934	31 875 849
94	3 635 560	11 210 652	9 561 615	7 763 062	3 435 109	35 605 998
95	3 812 957	11 020 823	8 803 887	7 264 791	3 219 496	34 121 954
96	3 456 928	10 486 331	8 598 697	7 209 195	3 593 696	33 344 847
97	3 764 352	11 952 225	9 361 649	6 824 331	4 261 500	36 164 057

## E. Seaborne transports between Finland and foreign countries by groups of goods and share of Finnish tonnage, 1995 - 1997

## Import

Description	1997		1996		1995	
	tonnes	On Finnish	tonnes	On Finnish	tonnes	On Finnish
		vessels		vessels		
Timber	993 200	307 858	707 714	247 645	1 462 573	380 979
Sawn wood	36 879	18 059	15 411	363	9 765	7 740
Wood pulp	40 375	10 108	54 819	4 276	80 324	3 213
Paper and paperboard	38 501	14 781	23 802	8 717	26 248	11 674
Veneers and plywood	21 380	4 225	13 911	3 243	18 125	4 998
Metals and metal manufactures	990 260	284 651	1 011 111	260 473	1 086 059	280 234
Chemicals	2 039 002	145 678	1 506 785	104 855	1 545 353	227 865
Fertilizers	89 851	26 579	122 580	51 511	159 401	31 434
Cereals	263 421	18 416	332 816	24 601	245 934	20 721
Mineral oils	9 462 284	6 329 199	10 754 926	7 016 871	11 724 523	7 816 029
Coal and coke	7 530 127	5 270 383	7 600 049	4 673 565	7 051 134	4 107 622
Ores and concentrates	4 412 606	2 868 020	4 111 594	2 298 286	3 268 447	1 468 397
Crude minerals and cement	4 431 311	1 131 018	3 558 807	939 717	3 858 693	928 281
General cargo	7 948 778	3 592 031	6 546 976	3 021 411	5 931 392	2 727 212
Other merchandise	720 119	136 600	583 263	37 188	568 248	49 763
<b>Total</b>	<b>39 018 094</b>	<b>20 157 606</b>	<b>36 944 564</b>	<b>18 692 722</b>	<b>37 036 219</b>	<b>18 066 162</b>

## Export

Description	1997		1996		1995	
	tonnes	On Finnish	tonnes	On Finnish	tonnes	On Finnish
		vessels		vessels		
Timber	407 293	180 345	478 101	185 942	716 342	195 664
Sawn wood	3 764 352	224 487	3 456 928	291 098	3 812 957	282 336
Wood pulp	1 663 247	348 870	1 495 553	356 894	1 240 202	224 323
Paper and paperboard	9 375 384	3 650 050	8 007 643	3 086 893	8 598 876	3 272 346
Veneers and plywood	506 301	93 325	505 034	126 464	465 403	119 893
Metals and metal manufactures	2 122 658	947 980	2 138 554	886 636	2 376 252	837 729
Chemicals	2 480 814	289 443	2 326 046	248 623	3 080 556	347 249
Fertilizers	1 349 474	6 290	1 237 477	24 619	1 024 255	28 930
Cereals	630 707	35 044	381 719	19 193	416 005	4 101
Mineral oils	4 343 517	2 288 268	4 883 149	2 045 685	4 184 235	2 021 287
Coal and coke	13 163	1 665	46 166	28 775	6 785	0
Ores and concentrates	954 625	457 997	981 021	481 307	935 502	577 684
Crude minerals and cement	1 024 258	320 018	660 576	196 526	744 513	170 563
General cargo	7 238 991	3 144 746	6 460 143	2 951 645	6 427 635	2 715 267
Other merchandise	289 273	36 087	286 737	18 552	92 436	13 729
<b>Total</b>	<b>36 164 057</b>	<b>12 024 615</b>	<b>33 344 847</b>	<b>10 948 852</b>	<b>34 121 954</b>	<b>10 811 101</b>

## F. Seaborne trade between Finland and foreign countries in 1997

Country	Import tonnes	Export tonnes	Total tonnes	%
Sweden	7 004 891	4 769 677	11 774 568	15,7
Denmark	1 681 597	1 070 685	2 752 282	3,7
Germany	4 823 526	8 357 104	13 180 630	17,5
United Kingdom	3 689 301	4 474 997	8 164 298	10,9
Ireland	71 014	114 046	185 060	0,2
Netherlands	1 898 575	3 108 286	5 006 861	6,7
Belgium	1 273 455	2 466 253	3 739 708	5,0
France	262 156	1 010 127	1 272 283	1,7
Spain	404 560	982 589	1 387 149	1,8
Portugal	198 848	132 171	331 019	0,4
Italy	16 839	334 457	351 296	0,5
Greece	57 976	238 360	296 336	0,4
<i>EU total</i>	<i>21 382 738</i>	<i>27 058 752</i>	<i>48 441 490</i>	<i>64,4</i>
Norway	3 351 440	530 903	3 882 343	5,2
Iceland	17 785	10 169	27 954	0,0
Faroe Islands	750	6 577	7 327	0,0
Russia	1 868 157	238 603	2 106 760	2,8
Estonia	1 447 976	1 455 602	2 903 578	3,9
Latvia	2 485 452	376 024	2 861 476	3,8
Lithuania	140 854	24 530	165 384	0,2
Poland	4 727 316	784 831	5 512 147	7,3
Rumania	3 020	-	3 020	0,0
Turkey	52 130	264 158	316 288	0,4
Ukraine	1 609	-	1 609	0,0
Georgia	-	36	36	0,0
Egypt	252	517 027	517 279	0,7
Libya	4 197	18 419	22 616	0,0
Tunisia	-	100 749	100 749	0,1
Algeria	185 436	164 678	350 114	0,5
Morocco	63 889	49 798	113 687	0,2
Mauritania	265 263	-	265 263	0,4
Senegal	16	-	16	0,0
Guinea	98 007	-	98 007	0,1
Ghana	19 283	-	19 283	0,0
Ivory Coast	-	11 441	11 441	0,0
Nigeria	-	27 651	27 651	0,0
Cameroon	-	5 290	5 290	0,0
South Africa	330 473	4 715	335 188	0,4
Mozambique	31 100	1 920	33 020	0,0
Mauritius	18 000	-	18 000	0,0
Tanzania	12 413	829	13 242	0,0
Kenya	-	56 156	56 156	0,1

F. (cont.)

Country	Import tonnes	Export tonnes	Total tonnes	%
Cyprus	2 445	8 477	10 922	0,0
Syria	-	18 390	18 390	0,0
Libanon	-	28 628	28 628	0,0
Israel	4 937	226 726	231 663	0,3
Saudi Arabia	-	56 855	56 855	0,1
Oman	-	1 247	1 247	0,0
United Arab Emirates	-	11	11	0,0
Iran	-	193 061	193 061	0,3
Pakistan	-	279	279	0,0
India	-	103 532	103 532	0,1
Sri Lanka	-	743	743	0,0
Malaysia	-	64 828	64 828	0,1
Singapore	-	57 460	57 460	0,1
Indonesia	122 863	28 504	151 367	0,2
Thailand	-	138 074	138 074	0,2
Vietnam	-	368	368	0,0
Philippines	3 732	-	3 732	0,0
Taiwan	-	73 520	73 520	0,1
China	-	905 350	905 350	1,2
Japan	33 254	357 853	391 107	0,5
Republic of Korea	-	15 458	15 458	0,0
Canada	117 024	82 813	199 837	0,3
United States of America	1 102 450	1 911 805	3 014 255	4,0
Mexico	-	15 554	15 554	0,0
Guatemala	-	14 998	14 998	0,0
El Salvador	-	10 001	10 001	0,0
Costa Rica	5 661	-	5 661	0,0
Netherlands Antilles	34 939	-	34 939	0,0
Bermuda	-	1 030	1 030	0,0
Jamaica	36 797	-	36 797	0,0
Colombia	526 711	627	527 338	0,7
Venezuela	155 632	29 245	184 877	0,2
Brazil	62 162	95 927	158 089	0,2
Uruguay	83 683	-	83 683	0,1
Argentina	45 740	10 247	55 987	0,1
Chile	-	949	949	0,0
Australia	172 508	29	172 537	0,2
New Zealand	-	2 610	2 610	0,0
<b>Total</b>	<b>39 018 094</b>	<b>36 164 057</b>	<b>75 182 151</b>	<b>100</b>

G. Arrivals and departures in foreign traffic, 1981-1997

Arrivals

Year	Passenger vessels			Passenger/car ferries			Cargo ferries			Bulk carriers			Other dry cargo vessels			Tankers			Other vessels			Total		
	Number	Net million	Cargo 1 000 t	Cargo Number	Net million	Cargo 1 000 t	Cargo Number	Net million	Cargo 1 000 t	Cargo Number	Net million	Cargo 1 000 t	Cargo Number	Net million	Cargo 1 000 t	Cargo Number	Net million	Cargo 1 000 t	Cargo Number	Net million	Cargo 1 000 t	Cargo Number	Net million	Cargo 1 000 t
1981	1 457	3,9	41	8 108	39,7	1 009	2 127	3,9	1 397	2 139	5,5	8 540	6 397	8,4	5 355	1 748	7,9	13 366	807	0,703	470	22 783	70,0	30 178
82	976	3,5	20	8 590	42,4	1 065	2 125	4,4	1 665	1 935	5,6	8 758	5 742	7,6	5 426	1 609	6,6	12 440	727	0,8	886	21 704	70,9	30 260
83	1 071	3,8	15	8 007	43,4	1 122	2 291	5,0	1 604	2 272	6,1	8 370	5 721	7,8	4 882	1 934	7,8	13 752	743	0,6	1 170	22 039	74,6	30 915
84	1 096	3,7	13	7 912	42,7	1 063	2 583	5,7	1 738	2 290	6,0	7 236	5 353	7,1	4 474	2 020	8,3	13 442	894	0,7	1 452	22 148	74,3	29 418
85	992	3,4	13	7 731	49,0	1 055	2 811	7,1	2 065	2 071	6,4	8 739	4 957	6,4	4 904	1 949	8,3	13 936	632	0,4	936	21 143	81,1	31 648
86	940	2,7	-	7 935	64,9	1 172	2 779	7,4	2 008	2 438	6,5	8 980	4 890	6,5	4 024	1 924	7,5	13 217	603	0,3	545	21 509	95,8	29 946
87	960	2,7	-	8 325	68,1	1 336	2 796	7,4	2 103	2 531	5,9	7 130	4 816	6,1	3 822	2 034	8,8	14 376	652	0,9	2 518	22 114	99,9	31 285
88	1 826	3,2	-	8 222	69,0	1 346	3 417	8,8	2 436	2 724	5,8	7 356	4 995	6,0	4 105	2 206	8,3	13 214	769	1,1	3 417	24 159	102,4	31 874
89	1 457	2,9	-	9 028	87,6	1 250	4 306	10,6	2 896	2 952	6,3	8 459	5 289	6,9	4 605	2 122	7,5	12 423	728	1,3	3 999	25 882	123,1	33 632
1990	1 827	8,7	37	9 073	96,0	963	4 688	13,2	3 043	2 686	6,6	8 657	5 223	6,6	5 449	2 298	8,7	12 822	776	1,0	3 854	26 571	140,9	34 825
91	2 319	10,3	34	8 777	103,9	832	4 545	13,2	2 670	2 582	6,7	8 656	4 896	6,4	5 011	2 205	8,7	13 282	410	0,5	1 792	25 734	149,8	32 277
92	2 396	5,2	-	8 893	107,1	877	4 954	14,9	2 846	2 809	6,0	6 007	5 435	7,1	6 183	2 299	8,4	12 611	566	0,9	3 566	27 352	149,6	32 090
93	2 117	5,2	-	9 101	112,1	1 025	5 589	15,6	2 992	1 894	5,8	6 687	6 618	8,9	6 215	2 240	7,9	11 536	621	1,0	4 105	28 180	156,4	32 560
94	2 070	2,3	-	8 880	101,9	1 179	5 860	17,2	3 652	1 482	6,3	8 163	7 550	10,5	6 873	2 350	8,8	14 080	657	1,2	4 691	28 849	148,1	38 637
95	1 971	1,3	-	10 242	117,8	1 700	5 782	20,6	3 501	893	5,0	6 479	8 244	12,0	7 379	2 166	8,3	13 021	831	1,3	4 956	30 129	166,2	37 036
96	2 182	2,4	3	9 460	116,5	1 377	5 710	22,6	4 155	965	5,4	7 365	7 635	11,6	7 066	1 969	7,7	12 011	638	1,2	4 968	28 559	167,4	36 945
97	2 275	1,7	-	9 901	117,5	1 607	6 088	24,9	5 079	795	5,3	7 872	8 932	13,9	8 455	1 892	7,5	10 940	767	1,3	5 065	30 650	172,1	39 018

Departures

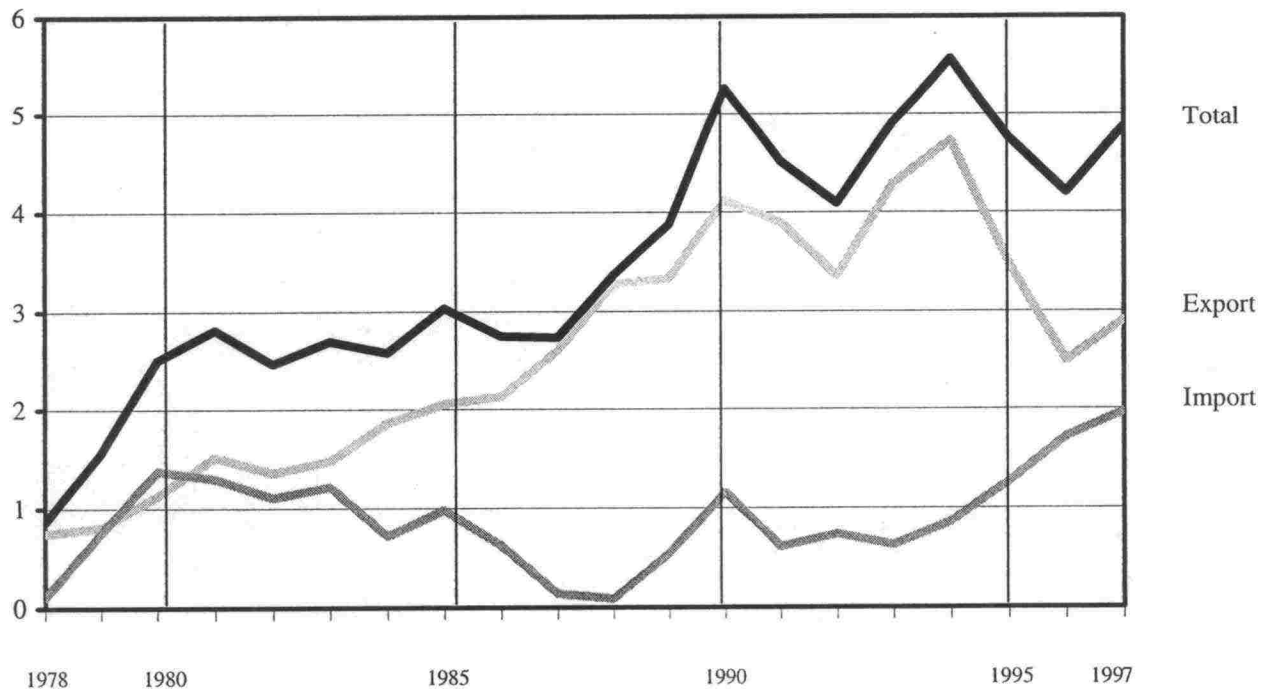
Year	Passenger vessels			Passenger/car ferries			Cargo ferries			Bulk carriers			Other dry cargo vessels			Tankers			Other vessels			Total		
	Number	Net million	Cargo 1 000 t	Cargo Number	Net million	Cargo 1 000 t	Cargo Number	Net million	Cargo 1 000 t	Cargo Number	Net million	Cargo 1 000 t	Cargo Number	Net million	Cargo 1 000 t	Cargo Number	Net million	Cargo 1 000 t	Cargo Number	Net million	Cargo 1 000 t	Cargo Number	Net million	Cargo 1 000 t
1981	1 493	4,2	62	8 064	39,4	973	2 101	3,8	3 496	2 110	5,4	2 004	6 468	8,5	6 987	1 729	7,9	3 712	817	0,8	1 185	22 782	70,0	18 419
82	984	3,6	42	8 571	42,2	961	2 116	4,4	3 716	1 944	5,6	1 674	5 723	7,5	5 922	1 577	6,5	2 990	756	0,8	735	21 671	70,7	16 040
83	1 079	3,8	40	7 999	43,5	1 050	2 284	5,0	4 129	2 245	6,1	2 083	5 730	7,8	6 286	1 890	7,6	4 018	770	0,7	239	21 997	74,4	17 845
84	1 103	3,7	36	7 909	42,7	1 055	2 575	5,7	4 652	2 269	6,0	2 937	5 382	7,3	6 595	1 960	7,9	5 133	907	0,7	321	22 105	74,0	20 729
85	985	3,2	31	7 742	49,3	1 051	2 799	7,1	5 636	2 093	6,3	3 154	4 941	6,5	5 778	1 888	8,3	4 550	621	0,4	107	21 069	81,0	20 307
86	939	2,7	-	7 934	65,1	1 239	2 783	7,4	5 732	2 394	6,4	2 875	4 893	6,5	5 920	1 899	7,4	4 141	631	0,3	339	21 473	95,9	20 246
87	967	2,8	-	8 338	68,5	1 356	2 806	7,4	5 903	2 509	5,8	3 232	4 849	6,3	6 261	1 950	8,4	5 366	663	0,9	319	22 082	100,1	22 437
88	1 833	3,3	4	8 229	69,3	1 274	3 416	8,8	6 434	2 696	5,8	3 364	5 010	6,0	6 150	2 120	8,0	6 062	753	1,1	65	24 057	102,3	23 353
89	1 455	2,9	1	8 992	86,6	1 064	4 233	10,4	6 456	2 906	6,2	3 757	5 330	7,0	6 397	2 065	7,3	4 660	740	1,3	90	25 721	121,8	22 425
1990	1 828	8,8	31	9 124	97,4	957	4 595	13,0	7 312	2 604	6,4	3 901	5 300	7,4	5 920	2 239	8,4	5 813	788	1,0	113	26 478	142,4	24 047
91	2 317	10,2	41	8 754	103,4	922	4 545	13,3	7 655	2 526	6,7	4 665	5 006	6,7	6 308	2 160	8,5	6 940	404	0,5	86	25 712	149,2	26 617
92	2 404	5,3	-	8 924	107,3	982	4 926	14,8	8 532	2 757	5,9	4 691	5 075	7,2	6 193	2 265	8,2	7 109	567	0,9	251	27 418	149,6	27 758
93	2 129	5,3	2	9 069	114,0	1 191	5 586	15,5	9 427	1 891	5,8	4 878	6 606	8,9	9 169	2 234	7,8	6 857	620	1,0	352	28 135	158,3	31 876
94	2 066	2,3	-	8 894	106,5	1 321	5 823	17,1	10 572	1 478	6,3	4 960	7 546	10,5	11 389	2 328	8,7	6 999	656	1,2	365	28 791	152,6	35 606
95	1 958	1,3	-	10 223	121,6	2 033	5 806	20,6	9 524	889	5,0	4 129	8 238	12,0	11 863	2 106	8,1	6 110	857	1,3	463	30 077	169,8	34 122
96	2 184	2,4	16	9 460	119,9	1 632	5 653	22,4	10 026	961	5,3	3 794	7 639	11,7	11 275	1 947	7,9	6 375	644	1,2	227	28 488	170,8	33 345
97	2 244	1,7	-	9 880	121,6	1 808	6 077	24,9	11 391	794	5,4	3 372	8 905	13,8	13 030	1 883	7,4	6 310	798	1,4	253	30 581	176,2	36 164

### H. Transit traffic through Finnish ports, 1978 – 1997

Year	Import tonnes	Export tonnes	Total tonnes
1978	111 340	749 272	860 612
79	751 851	808 761	1 560 612
1980	1 375 293	1 124 093	2 499 386
81	1 294 238	1 512 573	2 806 811
82	1 104 280	1 354 951	2 459 231
83	1 212 332	1 477 153	2 689 485
84	719 527	1 856 050	2 575 577
85	976 282	2 053 514	3 029 796
86	618 334	2 123 065	2 741 399
87	137 833	2 588 625	2 726 458
88	85 485	3 277 497	3 362 982
89	545 644	3 330 007	3 875 651
1990	1 153 699	4 118 771	5 272 470
91	610 780	3 899 505	4 510 285
92	735 349	3 353 619	4 088 968
93	625 371	4 287 834	4 913 205
94	854 211	4 719 914	5 574 125
95	1 260 838	3 486 533	4 747 371
96	1 710 782	2 487 510	4 198 292
97	1 964 080	2 897 391	4 861 471

### I. Transit traffic through Finnish ports, 1978 - 1997

Million tonnes





## J. Passenger traffic between Finland and foreign countries, 1960-1997

Year	Passengers arrived			Passengers departed			Total Number
	Number	On Finnish vessels		Number	On Finnish vessels		
		Number	%		Number	%	
1960	338 604	209 517	61,9	338 621	209 576	61,9	677 225
61	454 917	311 852	68,6	449 642	308 838	68,7	904 559
62	513 075	340 910	66,4	504 913	344 346	68,2	1 017 988
63	521 211	389 538	74,7	518 203	394 100	76,1	1 039 414
64	718 381	513 883	71,5	714 296	514 333	72,0	1 432 677
65	1 003 205	630 908	62,9	1 010 885	644 514	63,8	2 014 090
66	916 958	633 652	69,1	917 035	647 185	70,6	1 833 993
67	933 259	686 148	73,5	931 979	691 408	74,2	1 865 238
68	1 110 741	836 345	75,3	1 106 453	847 122	76,6	2 217 194
69	1 262 413	961 451	76,2	1 270 194	959 349	75,5	2 532 607
1970	1 493 559	1 162 868	77,9	1 499 185	1 171 744	78,2	2 992 744
71	1 921 222	1 587 341	82,6	1 890 892	1 540 944	81,5	3 812 114
72	2 525 786	1 914 786	75,8	2 489 275	1 936 502	77,8	5 015 061
73	2 878 659	2 234 517	77,6	2 852 081	2 223 903	78,0	5 730 740
74	2 576 775	2 068 717	80,3	2 586 480	2 051 917	79,3	5 163 255
75	2 676 407	2 040 757	76,2	2 711 329	2 081 096	76,8	5 387 736
76	2 581 663	2 049 733	79,4	2 597 969	2 055 669	79,1	5 179 632
77	2 559 268	2 045 998	79,9	2 594 187	2 020 521	77,9	5 153 455
78	2 849 282	2 227 401	78,2	2 878 834	2 209 452	76,7	5 728 116
79	3 037 356	2 392 097	78,8	3 062 370	2 410 112	78,7	6 099 726
1980	2 940 468	2 204 645	75,0	2 939 663	2 175 776	74,0	5 880 131
81	3 364 143	2 576 225	76,6	3 372 092	2 569 253	76,2	6 736 235
82	3 399 577	2 534 746	74,6	3 435 149	2 621 133	76,3	6 834 726
83	3 439 480	2 682 096	78,0	3 493 497	2 682 759	76,8	6 932 977
84	3 535 116	2 773 045	78,4	3 570 164	2 682 431	75,1	7 105 280
85	3 725 000	2 692 774	72,3	3 739 267	2 740 925	73,3	7 464 267
86	4 020 333	2 923 726	72,7	4 028 837	2 926 457	72,6	8 049 170
87	4 149 897	2 689 086	64,8	4 179 601	2 780 170	66,5	8 329 498
88	4 413 599	2 930 860	66,4	4 469 411	2 873 283	64,3	8 883 010
89	5 094 654	3 293 424	64,6	5 100 447	3 323 737	65,2	10 195 101
1990	5 400 758	3 307 960	61,2	5 433 268	3 346 699	61,6	10 834 026
91	6 178 140	3 745 922	60,6	6 212 620	3 918 834	63,1	12 390 760
92	6 501 136	3 871 321	59,5	6 529 383	3 889 960	59,6	13 030 519
93	6 704 947	4 050 922	60,4	6 704 770	4 056 232	60,5	13 409 717
94	6 242 789	4 122 205	66,0	6 221 862	4 228 068	68,0	12 464 651
95	6 977 694	4 725 180	67,7	6 932 656	4 832 408	69,7	13 910 350
96	7 045 124	4 930 496	70,0	7 006 872	5 032 981	71,8	14 051 996
97	7 616 874	5 155 735	67,7	7 573 890	5 292 630	69,9	15 190 764



**K. Passenger traffic between Finland and foreign countries, 1960 - 1997***Million passengers*