

Finna

Opening Access to Cultural Heritage and Scientific Information

Aki Lassila

Head of Development

National Library of Finland / Library Network Services

The Public Interface FINNA

Users can:

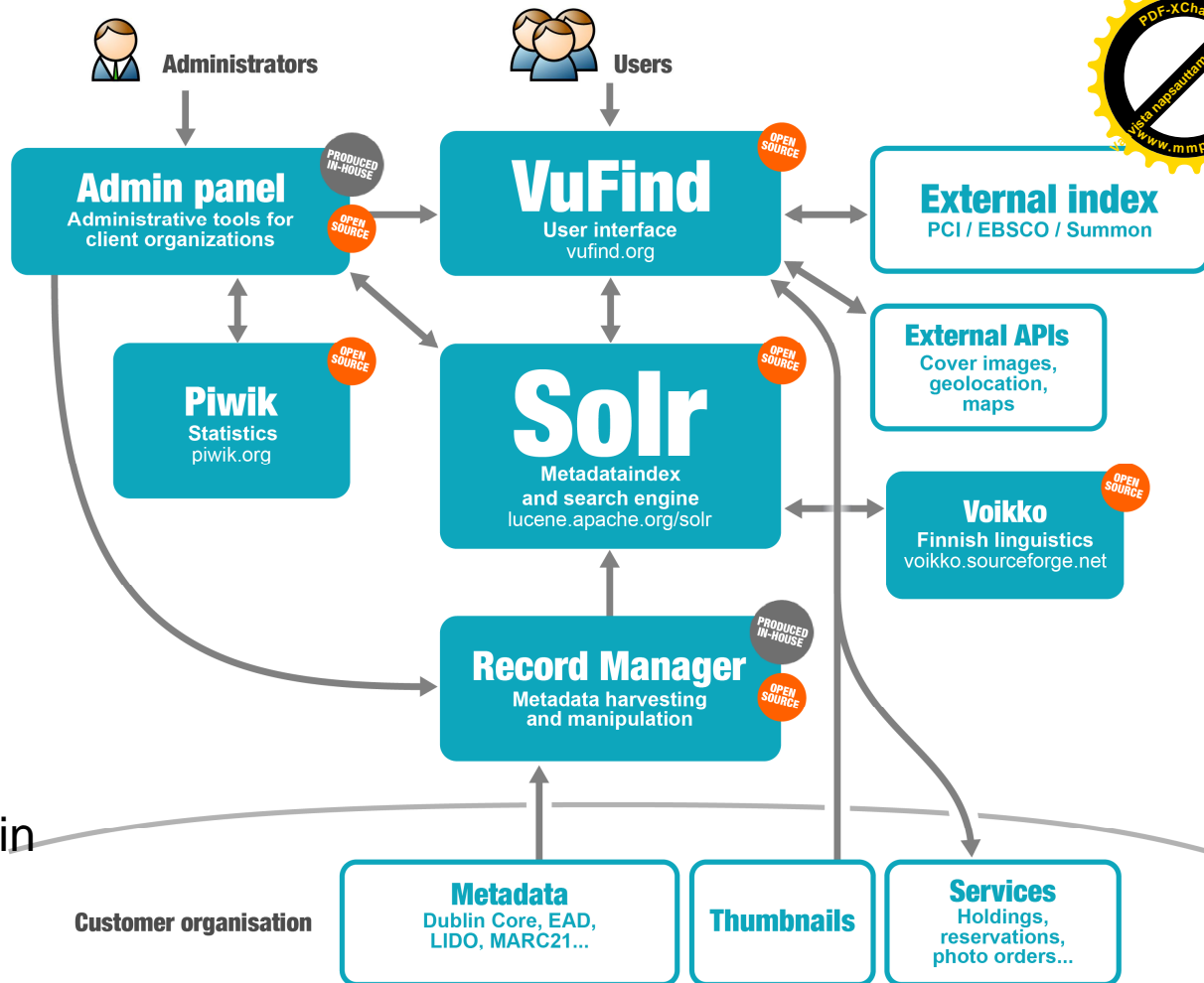
- Search information from archive, library and museum systems and databases.
- Retrieve materials, such as pictures, documents, newspapers, research documents, video and audio recordings.
- Access digital services, such as renew loans, buy pictures and order documents.

One user interface, multiple end-user views and services:

- National view for all content.
- Local and sector specific views (museum's view).
- Institutions' own views.

Software Architecture of Finna

- Finna is based on several software modules that are integrated together; therefore new modules can be added to the system if necessary
- Finna consists of two main parts:
 - End users' national interface or portal
 - Archives', libraries', and museums' administrator tools
- Main modules of the Finna system are:
 - End users' interface based on VuFind
 - Administrator panel for organisations, customisation and statistics
 - Search engine Solr
 - Metadata harvesting and processing module RecordManager (Formula)
 - Finnish linguistics module Voikko
 - External index and external APIs



- VuFind's role as the user interface is central.
- Admin panel handles statistics and upkeep.
- More functionality and modules can be added in the future.
- Finna's demo: www.kdk.fi/en/public-interface

Main Principles Steering the Development of Finna

- Development is based on the requirements defined together with libraries, archives, and museums.
- Organisations will become users of the software in phases.
- Development occurs in development cycles.
- The services are planned together with the customers.
- The user interface software is based on VuFind and additional open source software modules.
- National Library is responsible of the development of the software.

Customer driven development and Finna

- Why open source software (OSS) and agile development method?
 - Value of software is in how it enhances (existing) activities or enables (more efficient) new ways of doing things.
 - Above mentioned issues rely on e.g. how easily or efficiently users can utilize the system/software in question.
 - Note that software's functionality is not enough but usability, integratability (related to openness, APIs), and customization are also important.
- Development progresses in development cycles and issues are prioritised according to users' needs.
- NDL's user interface Finna will need to continue to develop also in the future.
- Agile development methods (Scrum in this case) and OSS based development fully support ongoing, customer driven service development work.

Key Factors behind Finna's Success

- Central funding for infrastructure services.
- Tradition of collaboration especially in library domain.
- Systematic development of centralised services.
- Customer organisations involved in steering centralised services.
- Flexible, customer-driven agile development.
- Software architecture is based on modular design with good APIs.
- International collaboration fastens development.



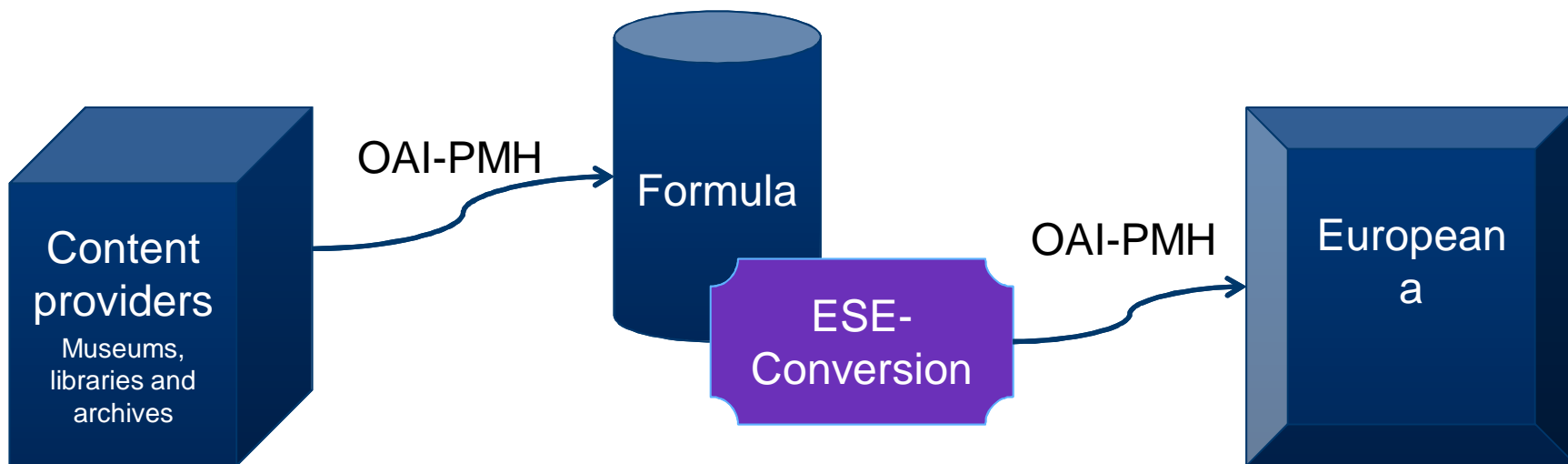
Formula Metadata Converter and National Aggregator

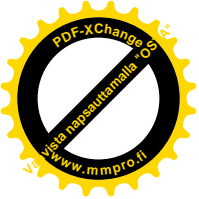
- National Digital Library (NDL) – National aggregator
- National Library of Finland (NLF) – Practicalities
- NLF will sign agreement with Europeana on local content providers' behalf
- NLF makes agreements with local content providers

“Division of Labour”

- Tasks of the National Aggregator (NLF)
 - Instructions and support
 - Harvesting from content providers repository
 - Testing converted data
 - Communication with Europeana
 - OAI-PMH –repository for Europeana
- Tasks of the Customer Organisations
 - OAI-PMH –harvesting interface
 - Conversion rules
 - Confirming rights
- Tasks of Europeana
 - Harvesting ESE format from our Formula Repository
 - ESE/EDM specifications

Formula Workflow





Thank you!

Aki Lassila

aki.lassila@helsinki.fi



For more information see:

<http://www.kdk.fi/fi/europeana-ja-muut-hankkeet/formula/formulaukk>

NLF's Formula contact person: Ari Rouvari

ari.rouvari@helsinki.fi