

n^o 435

**FINNISH
TOURIST ASSOCIATION**



TOURIST INNS
— and —
COMMUNICATIONS
1938

NOTE.

On all prices mentioned below members of the Finnish Tourist Association are granted a discount of 10 per cent on production of membership-card for the current year. (The reduction does not extend to members' families or persons in their company, nor is any discount allowed on alcoholic beverages, the tariff for which is fixed by the Alcohol Company.) Tips are not accepted in establishments maintained by the Tourist Association. Instead, an extra charge of 10 per cent for service is added to bills for food and accommodation (in accordance with notice on walls of guest-rooms in the Finlandia and Pohjanhovi hotels). Full board terms usually apply only after a stay of 5 days.

Inquiries should be addressed to the offices of the Association, Aleksanterinkatu 7 a, Helsinki, except during the period in which the Tourist inns are open, when requests for rooms to be reserved should be addressed direct to the respective inns and hotels.

All Tourist establishments maintained by the Association are equipped with telephones.

N. B. Exact time-tables are given in «Suomen Kulku-neuvot» (price 7 mks) obtainable at bookshops, railway bookstalls and the central office of the Finnish Tourist Association.

TOURIST INNS.

SUURSAARI.

RESTAURANT, open from June 5th to August 24th.

The restaurant is situated in the corner of the harbour bay between the bathing beach of Kappelnieni and the village Suurkylä.

The first floor houses the restaurant and café, the second floor the café balcony and 2 smaller dining rooms.

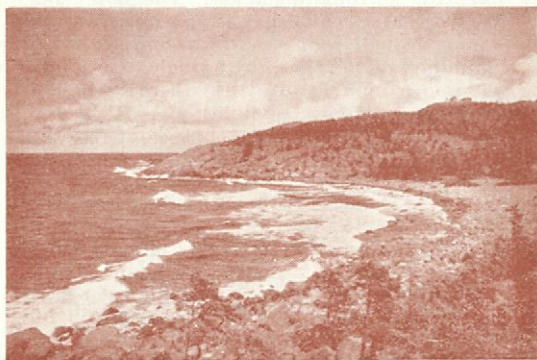
The restaurant can seat 300 and the terrace outside 350 persons.

Tariff: lunch 18—24 mks, dinner 20—25—30 mks, coffee or tea with sweet bread 6 mks, à la carte. Book of meal-tickets for one week (lunch, dinner, coffee in the morning or tea in the evening) 240 mks (members 216 mks).

Bathing beach: good sands, coffee and other refreshments, bathing-cabins at 2 mks per hour. Trips can be made from Suurkylä to Kiiskinkylä by road or motorboat (motorboats can be hired from the Suurkylä village).

Accommodation in the village. Rooms may be reserved through the *Osuuskunta Matkailijat*, Suursaari, for longer or shorter periods. Single rooms 20 mks for the first day and 15 mks for each successive day. Bed in common room 15 mks for the first day and 10 mks for each successive day.

Communications: Steamer service six times weekly from Kotka, three times from Helsinki, twice from Koivisto.



Suursaari.



The Punkaharju Ridge.

PUNKAHARJU.

THE HOTEL FINLANDIA (open all the year round) about 400 m from Punkaharju Station, came under the ownership of the Finnish Tourist Association in 1936. Extensive renovations have put the hotel in first-class condition. The hotel has 12 single and 14 double rooms and an extensive dining-room and lounge. Electric light, central heating, bathrooms, W. C. Finnish steam-bath (Sauna), swimming-bath, rowing-boats. Good walking roads and forest paths in vicinity. Fishing.

Tariff: Single room 45—60 mks (20 mks extra for private bathroom), double room 75—95 mks, extra bed 15 mks, breakfast 14 mks, lunch 24 mks, dinner and supper 30 mks, coffee or tea with sweet bread 7 mks. Full board, single room 85—100 mks, and double room 75—90 mks per diem. Tips are added to the bill as per notice in all guest rooms.

Postal and telegraphic address: Finlandia, Punkaharju.

VALTIONHOTELLI, situated on an exceptionally beautiful site on the Punkaharju Ridge, from which there is a delightful view over the surrounding lakes. The hotel, open from June 1st to Aug. 31st, comprises a spacious restaurant and drawing-room, 20 single rooms, and 2 rooms with 4 beds. In a separate building, «villa», there are 6 single rooms and 6 rooms with 2 beds, and a number of attics where excursion parties can be put up cheaply. Electric lighting, W. C., good Finnish baths, swimming-baths, 1st Class tennis court, rowing-boats, motorboat.

Tariff: Single rooms 30—50 mks, room with 2 beds 70 mks, bed in attics 15 mks, extra bed 15 mks, breakfast 12 mks, lunch 18 mks, dinner 24 mks, coffee or tea with sweet bread 6 mks, with bread and butter 7 mks, à la carte. Full board terms, minimum 3 days, 65—80 mks, double room 70 mks. During the period 1/6—20/6 a reduction of 15 per cent (25 per cent for members of the Tourist Association) on full board terms for a minimum stay of 5 days.

Postal and telegraphic address: Valtionhotelli, Punkaharju.

Communications: Rail to Punkaharju station, steamer connection with Savonlinna, motorbus connections in all directions.

SAVONLINNA.

The town of Savonlinna is one of the most important centres of tourist traffic in Finland. Besides being on the railway it is the point of departure for several lake-steamer routes. For the convenience of tourists the Tourist Association maintains a summer office in the Nälkälinna Building, the staff of which speak several languages and give gratis advice; reserve cabins on steamers, etc. The Tourist Association also maintains a pavilion on the quay, the keeper of which speaks several languages. Tourists may deposit their luggage here; on request the keeper will forward it direct to boat or train.

Postal and telegraphic address: Nälkälinna, Savonlinna.

The Tourist Association is in charge of the café at Olavinlinna (the castle), which has been installed in the newly repaired »Knights' Hall»; light lunches, coffee, tea, sandwiches, refreshments etc. served. Guides speaking several languages.

KOLI.

THE KOLI TOURIST INN (Kolin „ylämaja“, Koli Upper Inn), open all the year round, is situated at the highest point of the Koli chain of heights, Ukko-Koli, 348 metres above sea-level. The inn contains a large hall with open fireplace, a drawing-room, writing-room and dining-room, and 31 comfortably and modernly furnished bedrooms, of which 11 are with running water; 12 rooms contain single beds, the remaining 19 two beds. Other accommodation comprises 3 large common rooms with several beds, and simply-furnished rooms and a smaller building on the shore (»alamaja»), with accommodation altogether for about 40 persons. Two bathrooms, electric light, central heating, W. C. Finnish baths. Place for camping.

Walking roads and paths marked by signposts in Koli district; good bathing beach in Likolahti Bay on shores of Lake Pielinen. Deer in enclosure on slopes of Koli. Map: »Koli», 1:10.000, price 20: —.

Tariff: Single rooms 30—50 mks, rooms with 2 beds 35—50—60 mks, accommodation in common room or annexe 15 mks, breakfast 12 mks, lunch 18 mks, dinner and supper 24 mks, coffee or tea with sweet bread 6 mks, à la carte. Full board terms, minimum 5 days, 60—85 mks per day. 15⁰/₀ reduction allowed (members 25⁰/₀) on full board — minimum 5 days — during the period 15/9—15/12. Full board in common sleeping room 55 mks.

Communications: By railway to Vuonismahti station, from where the Association's motorboat »Ukko-Koli» conveys visitors to the inn. On luggage from the station carriage is charged at the rate of 2—4 mks per item. Motorbus between inn and motorboat; fare 5 mks. By motorbus from Joensuu, 76 kms, about 2 hours, fare 30 mks, and from Kuopio, about 4 hours, fare 50 mks.

Postal address: Kolin matkailumaja, Koli.

Telegrams: Kolinmaja, Joensuu.

VAALA AND LEPPINIEMI.

VAALA HOTEL (open from June 5th to Aug. 31st), situated at the outlet of the River Oulujoki from Lake Oulujärvi. Point of departure for the boats shooting the **Oulujoki Rapids**. The main hotel building comprises two halls, a drawing-room and a dining room, 5 single rooms, 6 rooms with 2 beds, 1 room with 3 beds and 3 large common rooms with several beds. In an annexe there are 5 rooms with 2 beds, and common rooms with beds in a separate annexe for the use of school and other similar touring parties. Bathroom, W. C. Finnish baths.

Tariff: Single rooms 50 mks, rooms with 2 beds 60—70 mks, accommodation in common rooms with beds 20—25 mks, light breakfast 12—18 mks, lunch 24 mks, dinner 24—30 mks, coffee or tea with sweet bread 6 mks, à la carte. Full board terms, 70—85 mks per diem.

Communications: By railway to a halt called «Vaalan hotelli».

Postal and telegraphic address: Vaalan hotelli, Vaala.
(For rapids journey see page 15.)

The Tourist Association owns a restaurant at **LEPPINIEMI** on the banks of the Pyhäkoski rapids in the Oulujoki river. This restaurant, (open 5th June—31st August), can seat about 100 persons. The restaurant is situated on the south bank of the rapids near the suspension bridge constructed over the rapids by the Forestry Investigation Department. Rapids-boats call at Leppiniemi (on the north bank of the river; restaurant reached via suspension bridge) for about 30 minutes in order for passengers to refresh themselves at the restaurant.

Tariff: Breakfast 12 mks, lunch 18—24 mks, dinner 24—30 mks, coffee or tea with sweet bread 6 mks, à la carte.

Postal and telegraphic address: Leppiniemen ravintola, Muhos.

ROVANIEMI.

A large, modern hotel **POHJANHOVI**, controlled by the Tourist Association, is at Rovaniemi, on the Arctic Circle. The hotel, which is open all the year round, has a large entrance lounge and two lounges on the other floors, a first-class restaurant, a restaurant with popular prices and 36 guest rooms, of which 24 are single and 12 double rooms. In addition there are 2 common rooms which can accommodate up to about 25 persons. During the summer there are 5 cabins for the joint accommodation of hikers. 2 single and 2 double rooms have their own bathrooms and in addition there are 4 general bathrooms. Every room has running hot and cold water, and double rooms a W. C. Electric light, central heating, telephones in guest rooms. Lift.

Trips can be made from Rovaniemi to nearby districts, among them Ounasvaara Fell (midnight sun!), to the fells of Luosto- and Pyhätunturi (540 m high, N. E. of Rovaniemi), to Hopeanulkki (355 m high, 60—70 km to S. E. of Rova-



Hotel Pohjanhovi.

niemi) and to Auttiköngäs waterfalls (81 km to S. E. of Rovaniemi). Grayling and trout can be obtained in the neighbouring streams and rapids. Further information supplied by hotel.

Tariff: Single room 45—55—65 mks (with private bath 85 mks), double room 70—80—90 mks (with private bath 110 mks), breakfast 14 mks, lunch 24 mks, dinner 30 mks, supper 35 mks, coffee or tea with sweet bread 7 mks, à la carte. Cheap meals from people's kitchen. Full board single room 85—105 mks, double room 75—85 mks. Bed in hotel common sleeping room 15 mks, full board 50 mks. Cabin tariffs: bed 7 mks (5 mks from members of Finnish Tourist Association and Finnish Hiker's Association), sheets 3 mks, blanket 2 mks. 4 garages, 20 mks per diem.

Postal and telegraphic address: Pohjanhovi, Rovaniemi.

EASTERN LAPLAND AND PETSAMO.

The village of Ivalo is situated on the bank of the Ivalojoiki, 295 kms north of Rovaniemi, on the Petsamo automobile road, the only highway in the world leading to the Arctic Ocean. Travellers proceeding northward or southward rest overnight here. From Ivalo excursions can be made to Inari village (motor-road through beautiful scenery, distance 40 km, guest-house, see below, Laplanders congregate at the church on the chief holidays and on certain Sundays in July and September), and trips made by motorboat on Lake Inari or long camping excursions into eastern Lapland.

There are two Tourist inns at Ivalo:

IVALON UUSI MATKAILUMAJA (Ivalo New Tourist Inn, open all the year round), situated on the banks of the Ivalojoiki, about 900 metres south of the village and on the west side of the highway. This inn is comfortably furnished in

modern style. It contains a hall, a drawing-room and a dining-room, 10 rooms with 2 beds each and 4 rooms with 3 beds; in addition there are 4 small summer inns, in which there is a total of 8 rooms with 3 beds. Bathroom, electric light, central heating, W. C., bathroom and splendid Finnish baths. Opposite the inn is a good sandy beach.

The mail-omnibus drives into the inn yard.

Tariff: rooms with 2 beds 65 mks, bed in room with 3 beds 25 mks, extra bed 15 mks, breakfast 12 mks, lunch 24 mks, dinner 30 mks, supper 24 mks, coffee or tea with sweet bread 6 mks. Full board 75—80 mks.

Postal address: Ivalon uusi matkailumaja, Ivalo.

Telegrams: Uusimaja, Ivalo.

IVALON VANHA MATKAILUMAJA (Ivalo Old Tourist Inn, open all the year round), is situated in the village of Ivalo, at the junction of the Inari and Petsamo highways. During the winter months the inn is also the Government posting inn. The main building comprises, in addition to a dining-room and a smaller drawing-room, 4 bed-rooms equipped for winter use, of which 1 has three beds and 3 two beds, and 3 summer rooms for a total of 10 persons. In addition there are 7 smaller cabins, each with 2 regular beds and 1 extra bed. The inn can accommodate 40 persons. Electric lighting. Finnish baths. Place for camping.

The mail-omnibus drives into the inn-yard.

Tariff: Double room 36 mks, bed 18 mks, extra bed or bed in room for 3 persons 15 mks, breakfast 12 mks, lunch, dinner, supper, 22 mks, coffee or tea with sweet bread 6 mks.

Postal address: Ivalon vanha matkailumaja, Ivalo.

Telegrams: Matkailija, Ivalo.

INARI. THE TOURIST INN, completed in 1937, is situated on the River Juutuanjoki on the outskirts of the church village of Inari, 40 km from Ivalo. The inn has a hall, drawing-room and dining-room, 8 single and 3 double-bedded rooms and 3 common sleeping rooms with accommodation for 32 persons. Central heating, bathrooms, hot and cold water in rooms. W. C., Finnish bath. There is also a separate building intended for Laps visiting Inari church. Place for camping.

Good fishing in River Juutuanjoki. Motorboat on Lake Inari for hire (50 mks per hour).

Tariff: Single room 50 mks, room with 2 beds 65 mks, additional bed 15 mks, bed in common sleeping room 15 mks, breakfast 12 mks, lunch 24 mks, dinner 30 mks, coffee or tea with sweet bread 6 mks. Full board 80—95 mks, common sleeping room 55 mks.

Communications: from Ivalo to Inari by mail-omnibus (daily service); stops at inn on request.

Postal address: Inarin matkailumaja, Inari.

Telegrams: Inarinmaja, Ivalo.



Virtaniemi.

VIRTANIEMI. THE TOURIST INN on the Arctic Highway is situated on a site of great natural beauty on the bank of the Paatsjoki, near the outlet of the river from Lake Inari, 53 kms from Ivalo and 348 kms from Rovaniemi. Open all the year round; in the winter also as Government posting inn. The main building comprises a dining and a drawing-room, 4 single rooms and 2 rooms with 2 beds. In addition there is 1 building of 2 rooms, accommodating altogether 8 persons, and 3 single-room cabins, each accommodating 3 guests. Central heating. W. C. Finnish baths. Place for camping.

A good site for angling. Motorboat on Lake Inari for excursions (50 mks per hour).

Tariff: single room 50 mks, room with 2 beds 65 mks, bed in annexe 15 mks, breakfast 12 mks, lunch 24 mks, dinner 30 mks, coffee or tea with sweet bread 6 mks. Full board terms, 80—95 mks per diem.

The mail-omnibus stops at the inn.

Postal address: Virtaniemen matkailumaja, Ivalo, Virtaniemi.

Telegrams: Virtaniemi, Ivalo.

YLÄLUOSTARI (UPPER MONASTERY). THE TOURIST INN on the Arctic Highway is situated on the bank of the River Petsamonjoki, near the Petsamo Greek Orthodox monastery, 505 kms from Rovaniemi. Open all the year round; in the winter as Government posting inn. Comprises a dining-room and a drawing-room, 9 bedrooms (accommodation for 19 guests). Central heating. Finnish baths. A visit is recommended to the monastery and nearby »Pelastusvuori» (Salvation Mount). Opportunities for angling. Place for camping.

From Yläluostari long or short excursions can suitably be made to the Petsamo fells. The key of the shelter at *Alaköngäs* is kept at Yläluostari Inn, where payment for the use of the shelter, at the rate of 15 mks per person per day, may also be made.

Tariff: Single room 40 mks, room with 2 beds 50 mks, breakfast 12 mks, lunch 24 mks, dinner 30 mks, coffee or tea with sweet bread 6 mks. Full board terms, 80—90 mks per diem.

The mail-omnibus stops at the inn.

Postal address: Yläluostarin matkailumaja, Salmijärvi.

Telegrams: Yläluostari, Petsamo.

THE LOHILINNA FISHING INN (open from the middle of June till the middle of September) is situated about 3,5 kms from the tourist inn at Yläluostari on the banks of the River Petsamonjoki in very beautiful surroundings, at the point where the River Lammasjoki enters the River Petsamonjoki. The fishing guest-house has 1 room for four persons on the ground floor and three double rooms, a total accommodation for ten persons. A combined lounge and dining-room is situated in a separate building by the side of the guest-house. Accommodation for anglers.

Tariff: Single room 50 mks, double rooms 70 mks, room for 4 persons 30 mks per bed, breakfast 12 mks, lunch 24 mks, dinner 30 mks, coffee or tea with sweet bread 6 mks, full board 80—85—95 mks per diem.

The guest-house can be reached from Yläluostari by cart.

Postal address: Lohilinnan kalastusmaja, Salmijärvi, Yläluostari.

LIINAHAMARI. THE TOURIST INN is situated at the terminus of the Arctic Highway, beside the deepwater harbour of Liinahamari near the mouth of Petsamo fjord, 531 kms from Rovaniemi. Open all the year round. The inn comprises a hall, drawing-room and dining-room, 8 single rooms, 2 rooms with 2 beds and 2 rooms with 3 beds and a sleeping hall with room for 12 persons; in addition there are 6 small summer inns and a cottage with a total accommodation for 44 persons. Bathroom, W. C., electric lighting, central heating. Finnish baths.

Liinahamari is the terminus for mail motor traffic and sea traffic with Kirkenes, Heinäsaaret Islands and Kalastaja-saarento. Shorter and longer mountain routes with sign posts lead from the inn (a printed leaflet can be obtained). Roomy peat cottage for night accommodation at Nurmensätti on the shores of the Arctic Ocean. Rowing boats can be hired for fishing in the Petsamo fjord. Motorboat can be hired for longer trips.

Tariff: Single rooms 50 mks, room with 2 beds 65 mks, room with 3 beds 75 mks (bed 25 mks), bed in sleeping hall 15 mks, breakfast 12 mks, lunch 24 mks, dinner 30 mks, coffee or tea with sweet bread 6 mks, full board 75—80—95 mks.

Mail-omnibus stops at inn.

Postal address: Liinahamarin matkailumaja, Liinahamari.

Telegrams: Liinahamari, Petsamo.



Pallastunturi.

VAITOLAHTI. THE TOURIST INN (open from the beginning of June to September), the most northern tourist inn in Finland, is situated on the shores of the Arctic Ocean near the Russian frontier in the village of Vaitolahti on Kalastajasaarento. In addition to a dining-room there are 5 guest-rooms with accommodation for 17 guests.

Tariff: Bed 20 mks, breakfast 12 mks, lunch 24 mks, dinner 30 mks, coffee or tea with sweet bread 6 mks.

Communications: Motor-vessel twice weekly from Liinahamari. The ship calls at Heinäsaaret Islands, well-known for their abundant bird life.

Postal and telegraphic address: Vaitolahden matkailumaja, Petsamo, Vaitolahti.

WESTERN LAPLAND.

PALLASTUNTURI. A large, new tourist inn was completed in the spring of 1938. The cabin lies slightly above the forest line at Vatikuru, on the southern slope of Pallastunturi in the national park, at a height of 506 metres. Nearby are the summits of the fell range, beginning from the west, Laukukero 777 m, Taivaskero or Himmelriikki 821 m, Pyhäkero 787 m and Palkaskero 718 m. A path marked by signposts leads over the Pallas and Ounastunturi fells to Hetta (minimum 2 days). There are two cabins on the route, and a tourist cabin at Ounastunturi (see below). Map: «Pallastunturi» and «Ounastunturi» 1:50.000, issued by the Government Surveying Board (price 20 mks). (See Tourist Association's guide book «To the Fells»). There are 17 single rooms, 19 double, 4 for six, and 3 for eight persons, a hall, 2 lounges and 2 dining rooms. There are 8 bathrooms, 8 showers, 4 rooms for the drying of clothes and 2 Finnish baths. Central heating, running hot and cold water, electric light, telephone. Own post office.

Tariff. Single room 50—60 mks, room with two beds 70—80—90 mks, extra bed 15 mks, bed in common sleeping room 15—20 mks, breakfast 15 mks, lunch 15—25 mks, dinner 20—30 mks, supper 25 mks. Full board 90—100—105—115 mks, in common sleeping room 50—55—75 mks. Private bathroom 20 mks extra.

Communications: New automobile road from Muonio church village, about 34 km or 86 km from Kittilä. The mail-omnibus stops at the inn.

Postal address: Pallastunturi.

Telegrams: Pallastunturi, Kauliranta.

PALLASJÄRVI. A TOURIST CABIN (open all the year round) is situated on the shore of Lake Pallasjärvi, about 6 km south-east of the inn; clearly marked path. The building comprises a fairly large room with an open fireplace and cooking-range, and a smaller room with an open fireplace. The cabin is furnished with cooking utensils and table equipment for those who wish to prepare their own meals. In the larger room there are three sleeping-compartments, each with two beds; the smaller room has four beds. The key of the cabin is kept in the adjacent forester's dwelling, where two rooms with altogether 7 beds for winter use, and two summer-rooms for 3 persons each, are at the Association's disposal.

Tariff: Bed 15 mks. Meals at the forester's 18 mks, single dishes 6—10 mks, coffee 5 mks per portion.

Motorboat with boatman available.

Communications: By mail-omnibus from Rovaniemi via Kittilä or Muonio to the Pallastunturi branch road, from which it is about 3 km on foot.

Postal address: Pallasjärven retkeilymaja, Pallastunturi.

OUNASTUNTURI. A TOURIST CABIN open all the year round, was completed in 1937 and is situated on the top of the Pyhäkero Spur of the Ounastunturi Fell (738 m), about 9 km to the S. E. of Enontekiö church village Hetta. The guest-house, which is of simple construction and built of logs, has 3 rooms with open fire-places. One room accommodates 20, another 10 and the third 6 persons. Each room has a small wash-room attached. There is also a kitchen which supplies simple fare during the tourist season. Telephone. Map: Ounastunturi 1:50,000, issued by the Government Survey Board (price 20 mks). Bathing beach 150 m (Pyhäjärvi).

Tariff: Night accommodation (bed, pillow and blanket) 12 mks, cup of coffee or tea 1 mk, bread and butter 2 mks, simple fare à la carte 6—10 mks. Refreshments, sweets and tobacco.

Communications: by boat from Hetta to the south shore of Lake Ounasjärvi, thence on foot along a dry path marked by sign posts to guest-house, (8 km.) or from Pallastunturi at least 2 days on foot.

Reservations: Hetan matkailumaja, Enontekiö.



Kilpisjärvi.

HETTA. THE TOURIST INN (open all the year round) is situated in the village of Enontekiö at Hetta. There are 3 bedrooms with accommodation for altogether 14 guests, and two double-bedded summer-rooms. Finnish baths. Place for camping.

In addition to trips to Ounastunturi and Pallastunturi (path marked by sign posts from Hetta to Pallastunturi) trips can be made to the nearby Jyppyrä Hill (400 m; about 1.5 km from guest-house) to Perilä rapids (about 2 km) and to more distant (17 km) Pöyrisjoki (rich in fish) and Pöyrisjärvi (about 50 km) with their Lapp dwellers.

Tariff: Bed in the inn 18 mks, breakfast 12 mks, other meals 18 mks, single dishes 6—10 mks, coffee 5 mks per portion. Full board 55 mks.

Communications: Mail-omnibus from Kauliranta station or from Rovaniemi via Kittilä to Hetta in the summer.

Postal address: Hetan matkailumaja, Enontekiö.

KILPISJÄRVI. A TOURIST CABIN is situated by Kilpisjärvi lake in Enontekiö near the place where the frontiers of Finland, Norway and Sweden join together. The house has two rooms with open fire place, one for six persons and one for four. Beds 15 mks.

KOLTTAKÖNGÄS SUMMER CAMP.

Temporary accommodation has been organized as follows at the site of the Kolttaköngäs tourist inn which was burned down last summer:

Accommodation in buildings. A total of four rooms are available, 2 of them in the Finnish bath house, 1 in the small cabin and 1 in the rectory. Each room has three beds, and four additional beds can be arranged.

Tents. The camping ground has 10 tents. Each tent contains a camp bed with rubber mattresses. Most tents are for two persons, but whenever possible tents can be reserved for one person. Luggage is stored separately.

Food. Those living in rooms or tents can obtain simple fare in the dining room of the second cabin.

Tariff. Bed in common sleeping room 18 mks, bed in tent for one person 25 mks, in tent for two or three persons 15 mks. Meals 18 mks, à la carte 6—10 mks, porridge and milk 3:50 mks, coffee per portion 4 mks, per cup 75 penniä, with sweet bread 1:25 mks. Full board terms, minimum 5 days, 50—60 mks. (Full board includes a bed in a common sleeping room or tent, two meals, morning coffee and evening tea).

Communications: a) By mail-omnibus from Salmijärvi via the wonderful Jäniskoski rapids along the road by the east bank of the River Paatsjoki, to the point where one crosses the head of the rapids by motorboat near Kolttaköngäs. About 1 km walk to the inn; luggage conveyed by cart (2—5 mks per item) Salmijärvi—Kolttaköngäs 12 mks. b) From Liinahamari in Petsamo by motor vessel once a week to Kirkenes in Norway, and from there by the motorboat belonging to the inn (Kirkenes—Kolttaköngäs 25 mks). c) The motorboat belonging to the inn may be ordered to bring tourists from Kirkenes or Elvenes (charge from Kirkenes 1—2 passengers 50 mks, thereafter 25 mks per passenger).

Reservations should be sent to the address: Kolttakönkään matkailumaja, Salmijärvi, Kolttaköngäs. Telegraphic address: Matkailija, Salmijärvi.

Further information supplied by the head office of the Finnish Tourist Association.

A new tourist inn will be built in 1939.

COMMUNICATIONS.

VUONISLAHTI—KOLI.

Time-table of the motorboat „Ukko-Koli“:

dep. 10 ⁴⁵ , 20 ⁰⁰	‡ Vuonislahti	‡ 9 ⁴⁵ , 17 ³⁰	dep.
arr. 11 ³⁰ , 20 ⁴⁵	‡ Koll	‡ 9 ⁰⁰ , 16 ⁴⁵	arr.

Fare: 15 mks.

RAPIDS-BOATS SERVICE ON THE OULU RIVER.

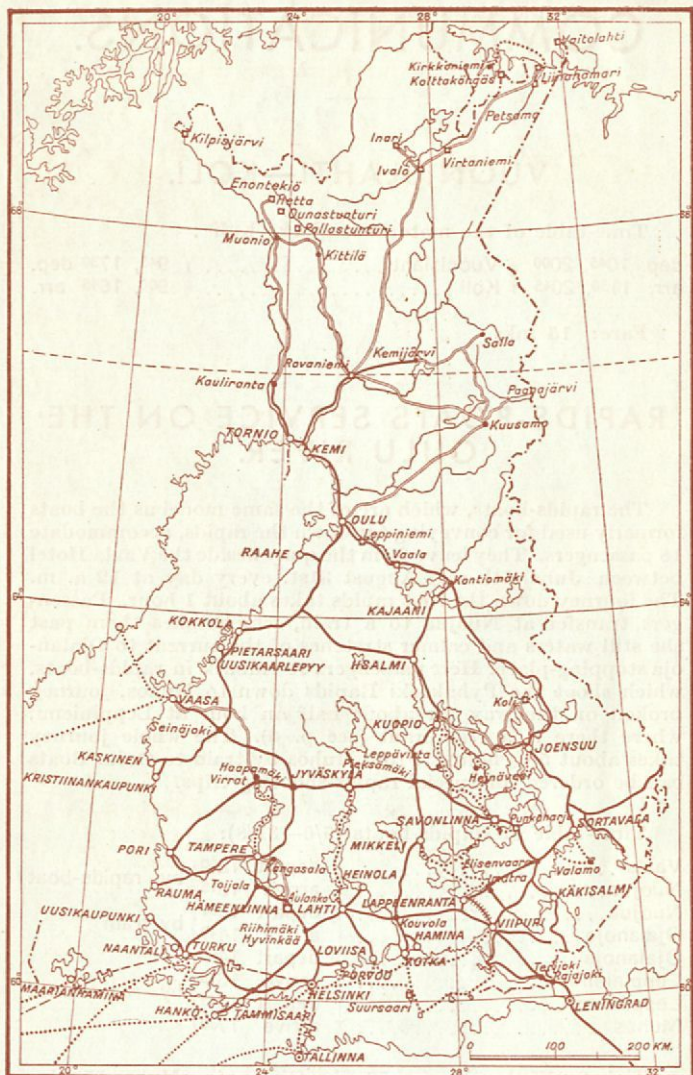
The rapids-boats, which are of the same model as the boats formerly used for conveying tar down the rapids, accommodate 18 passengers. They leave from the quay beside the Vaala Hotel between June 5th and August 31st. every day at 12 a. m. The journey down the first rapids takes about 1 hour. Passengers transfer at Nuojua to a train, which takes them past the still waters and calmer stretches of the current to Ojalanoja stopping-place. Here passengers re-embark in rapids-boats, which shoot the Pyhäkoski Rapids down to Muhos, journey broken on the way for about half an hour at Leppiniemi, where there is a restaurant (see p. 6). The whole journey takes about 5 1/2 hours. From Muhos by train to Oulu. Boats can be ordered for special rapids-shooting trips.

Time-table of Rapids-boats (5/6—31/8):

Vaala	‡ depart	12 ⁰⁰	} by rapids-boat
Nuojua	‡ arrive	13 ¹⁵	
Nuojua	‡ depart	13 ⁵⁷	} by train
Ojalanoja	‡ arrive	14 ⁴⁹	
Ojalanoja	‡ depart	14 ⁵⁵	} by rapids-boat
Leppiniemi	‡ arrive	16 ¹⁵	
Leppiniemi	‡ depart	16 ⁴⁵	
Muhos	‡ arrive	17 ³⁰	

Tickets: Vaala—Nuojua 50 mks, Ojalanoja—Muhos 55 mks, both stretches 100 mks, Leppiniemi—Muhos 10 mks.

No luggage is taken in the rapids-boats; luggage is carried free of charge by rail from Vaala to Muhos.



- = railway
- - - = motorbus service
- = steamer service
- = Tourist inn belonging to the Tourist Association

Published by the
FINNISH TOURIST ASSOCIATION
 Helsinki, Aleksanterinkatu 7 a. Tel. 26 752.

435 273