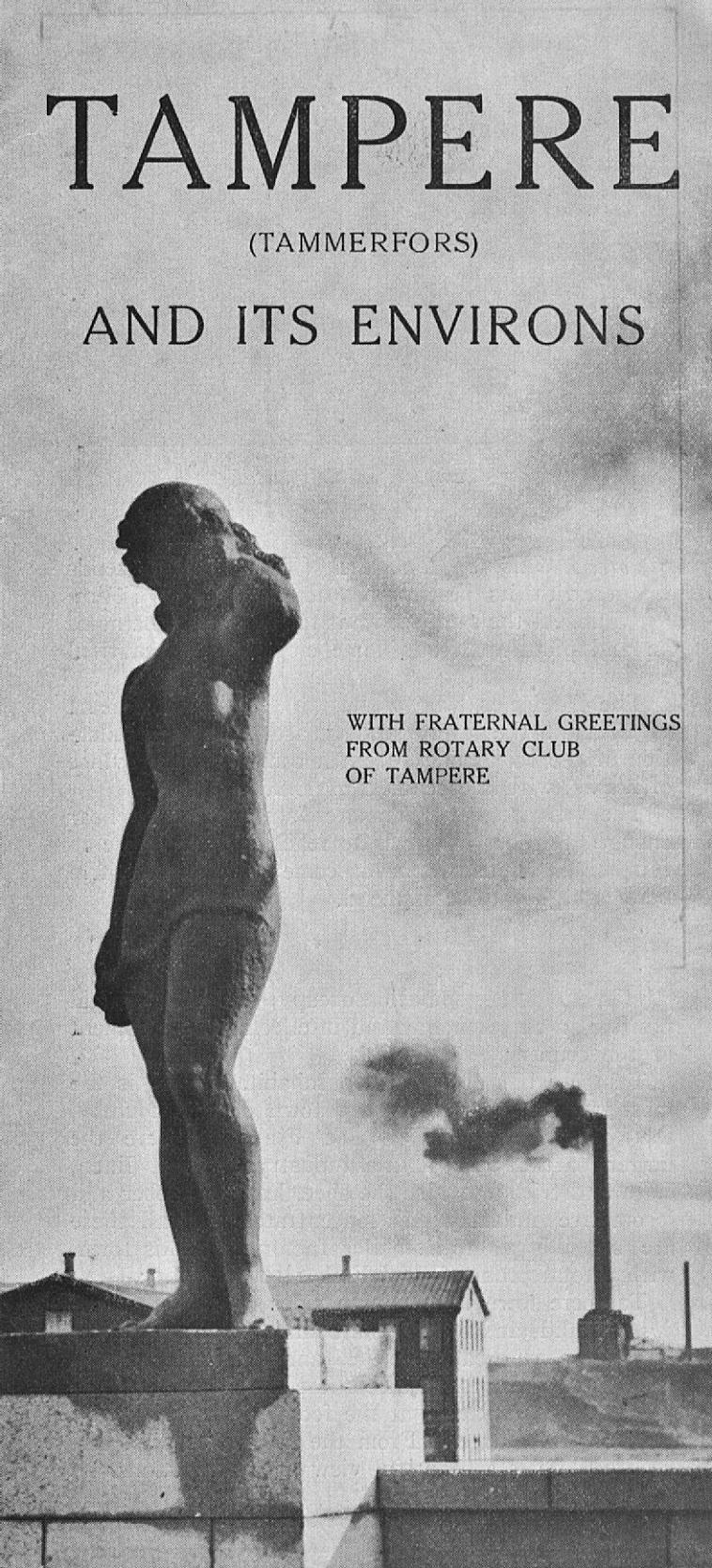


TAMPERE

(TAMMERFORS)

AND ITS ENVIRONS

A black and white photograph of a statue of a woman standing on a pedestal. The statue is shown in profile, facing left. In the background, there is a factory building and a tall smokestack emitting a plume of dark smoke. The sky is overcast.

WITH FRATERNAL GREETINGS
FROM ROTARY CLUB
OF TAMPERE



Tampere, an air view.

Rotary Club of Tampere (Tammerfors) sends herewith its best wishes to the worthy Fellow Club. At the same we want to give you some notes on and pictures of our home city and its beautiful environs.

The foreigner, who wishes to see the very heart of Finland, the lovely scenery as well as the pulsation of the economic life, must come to the province of *Häme*, with the centre *Tampere*.

The district of Tampere-Tammerfors is near enough to our capital as to reach it from there in few hours. Thus, when you come to Finland, a trip here is highly to recommend.

* * *

Häme and its population occupy, in fact, a central position in the economic and intellectual development of the country.

Tampere has about 61.000 inhabitants and is the most typical manufacturing town of this country, the clean „Manchester” of Finland. Here the larger part of the textile industry (cotton, linen, cloth and tricotage, also the shoe, leather, rubber and locomotive industry) is concentrated. In all there are 250 bigger and smaller factories in this town, with a total production of Fmk 1.100.000.000:—.

Tampere town lies on both sides of the *Tammerkoski* Rapids and on the point land between two fine lakes, the rugged *Näsijärvi* and the idyllic *Pyhäjärvi*. To the west stretches the wonderful and famous *Pyynikki* Ridge, at the foot of which grow 100 years old pine trees. From the 30 metres high belvedere there is a beautiful view in all directions.



Häme Bridge, City Hall, Theatre, and Library.

Tampere is the youngest of the bigger towns in Finland, and therefore cannot offer any old historical memorials, but the more it seems to contain young, thrifty industry and powerful development.

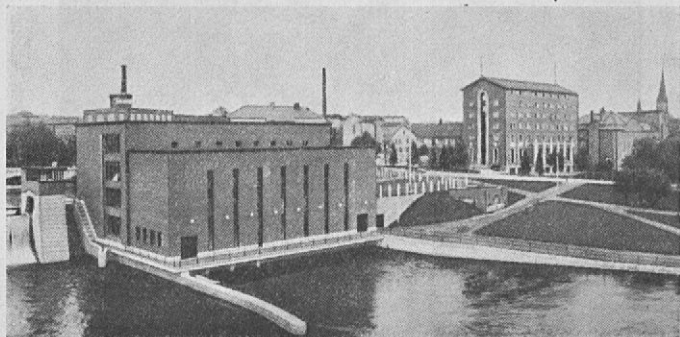
It also shows a prominent industrial and enterprising spirit, the latest result of which is the airplane manufactory and the airplane field at present under construction. The town is clean and airy and its hotels can offer comfort and various grades of accommodation to suit all travellers.

* * *

The surroundings of Tampere town belong to the most beautiful parts of Finland. Dense forests, lovely lake scenery and well cultivated farm yards offer the traveller varying views.

Specially refreshing is a steamer trip on Lake *Näsijärvi* to *Ruovesi* and *Virrat*. On fine summer days one cannot imagine a finer experience. The first open lakes change at *Murole Canal* (2 hours

Grand Hotel Tammer, the meeting place of Rotary Club.



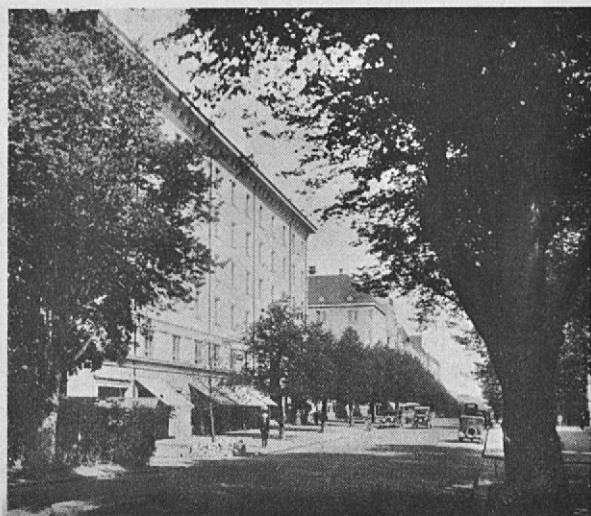


Nokia River (winter picture), 15 km from Tampere.

from Tampere) into sceneries most caressing to your eyes. You pass one narrow passage after the other. Here and there you see in the bays small villages and farms. The trip to Virrat takes 8¹/₂ hours.

15 kilometres west from Tampere lies the market town *Nokia* (6.000 inhabitants) on the shores of *Emäkoski* Rapids (height of the fall 16 metres, 33.500 horse power), where a big rubber manufactory and paper mill are situated. From the mountains of *Kullanvuori* at the periphery of this town one has a magnificent view of the surroundings. Also a trip by autobus to *Hämeenkyrö* (35 kilometres), *Kyröskoski* (40 kilometres) and further to the small idyllic country town *Ikaalinen* on the shore of Lake *Kyrösjärvi* (60 kilom.) can be recommended.

Street view in Tampere (Häme Street).





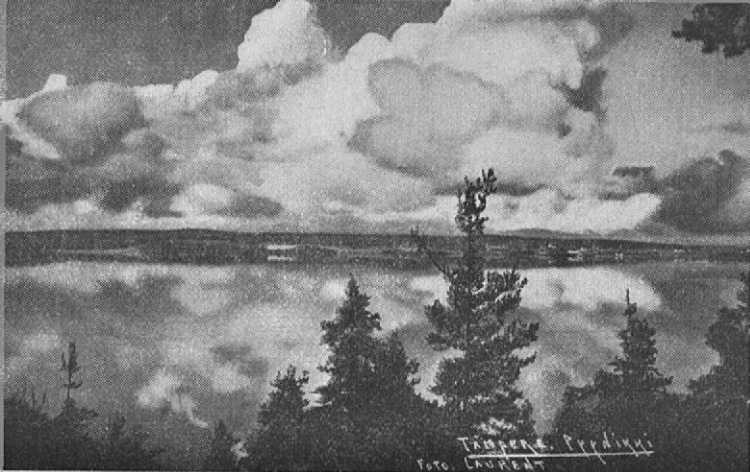
Kaukajärvi Lake, 12 km from Tampere.

There is no more charming and finer route in Finland than the highway from Tampere through *Kangasala* to *Hämeenlinna* (Tavastehus). In the first place you come to the fertile village of *Messukylä*. Thence you proceed to the nice Lake *Kaukajärvi*, and 14 kilometres further on you see the vast cultivated fields of *Kangasala*. Behind the fields you see the glittering Lake *Roine* and on its shore the Mansion House of *Liuksiala*, which belonged to the famous Queen Karin, wife of King Erik XIV.

One has a fine view over the surroundings of the *Kangasala Church Parish* (18 kilometres) from the belvedere on the *Church Ridge*, at the foot of which

Rest hour at Vehoniemi, 25 km from Tampere.



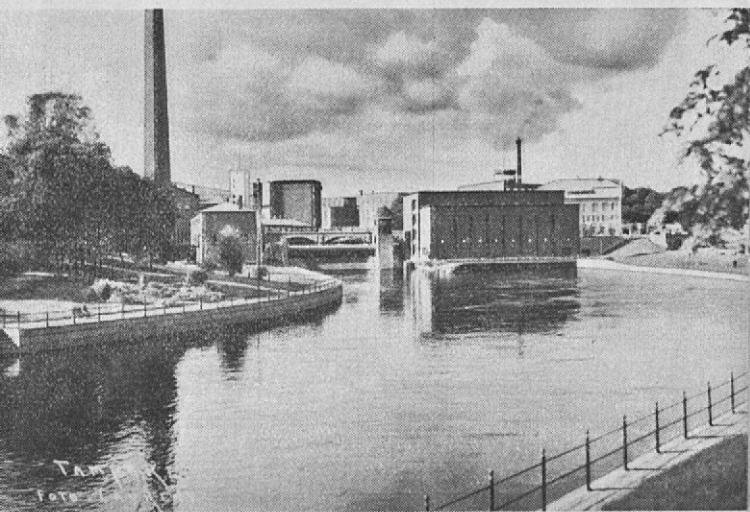


View from Pyynikki to Pyhäjärvi.

an automobile highway is drawn. The trip continues along the Kangasala Ridge, praised in song by poets, to *Kaivanto* Canal, which unites *Längelmävesi* on the left with Roine on the right. From here one proceeds to the tourist centre *Vehoniemi*, which, with its belvedere, its hotel and restaurant offers the traveller rest and comfort for a longer time. The whispering of the pine trees, the glittering lakes, and behind the lakes the bluish ridges, give a feeling which cannot be described, but has to be experienced.

From the ridge of Vehoniemi the trip continues to the Church Village of *Pälkäne*, with the belvedere, to *Syrjänharju*, from where one has an outlook which can be compared to the view from Kangasala. From here one comes to Hämeenlinna (86 kilometres) in the vicinity of which is the National Park *Aulanko*

The New Electric Powerhouse and its environs.





Week End in the bosom of nature.

which, with its fine hotel, is one of the most noteworthy places of interest in Finland.

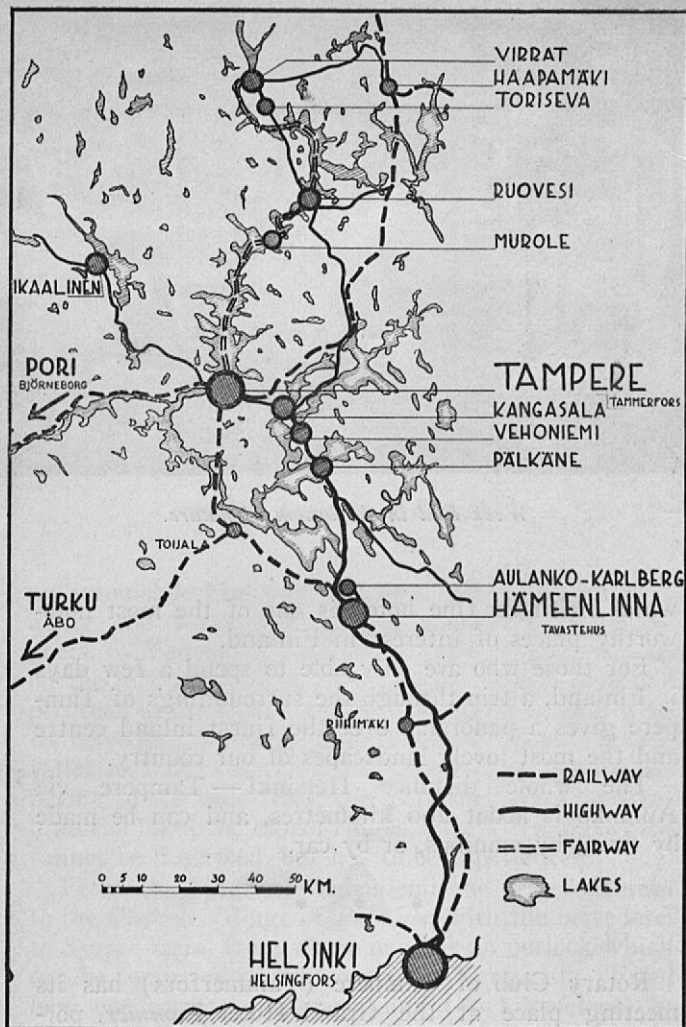
For those who are only able to spend a few days in Finland, a trip through the surroundings of Tampere gives a panorama over the finest inland centre and the most lovely landscapes of our country.

The whole distance Helsinki—Tampere via Aulanko is about 200 kilometres, and can be made by train, by omnibus, or by car.

* * *

Rotary Club of Tampere (Tammerfors) has its meeting place at the Grand Hotel *Tammer*, portrayed above, five minutes from the centre, and meets every monday at 11,45.





The surroundings of Tampere,

the ways, the chains of lakes, and the most famous views and sceneries.