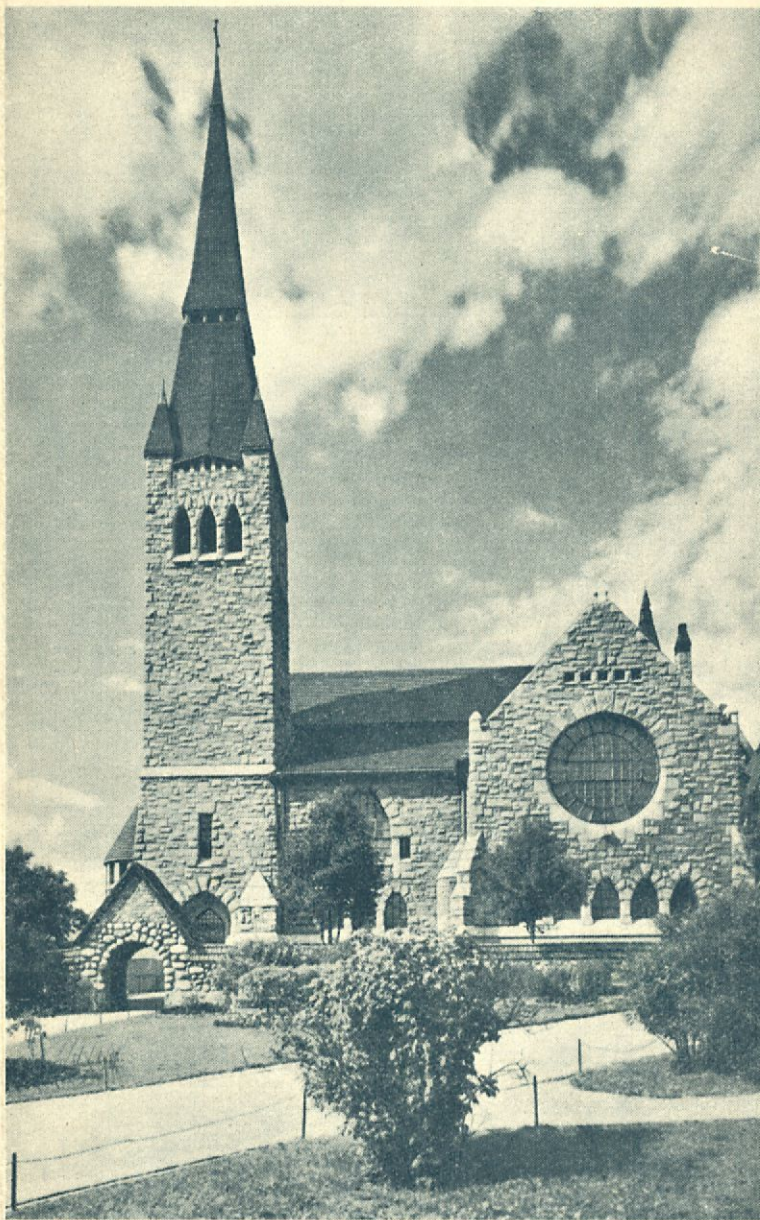


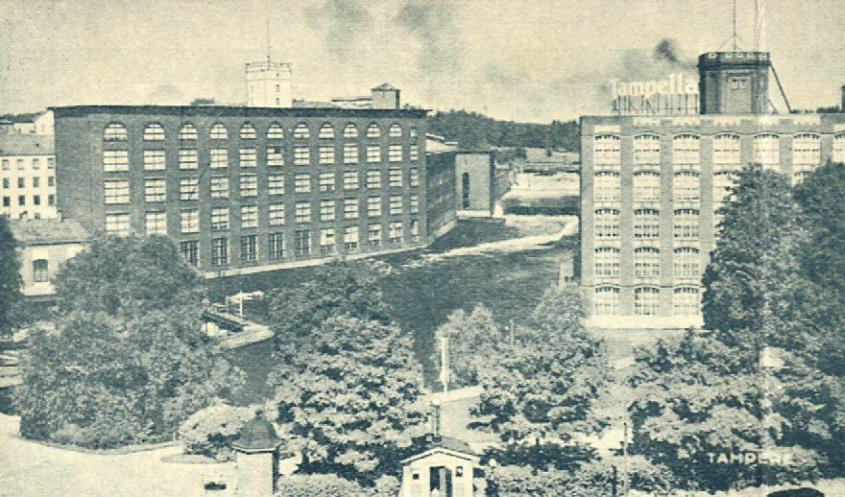
FINLAND



The Cathedral of Tampere

(H. Ittland)

Tampere and its environs



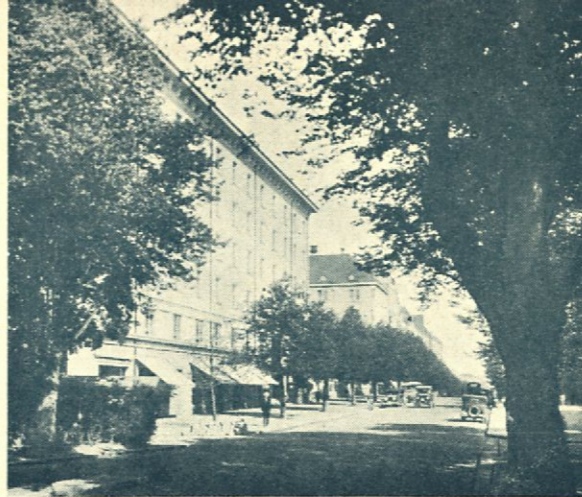
Factories of Tampere (View from Tammer Hotel)

(N. Rasmussen)



Häme Bridge, City Hall, Theatre and Library

(N. Rasmussen)



Street view in Tampere (Häme Street)

(A. Laurent)



Part of the bathstrand of Tampere

(N. Rasmussen)

The tourist, who wishes to see the very heart of Finland, i.e. besides the beautiful scenery also the pulsation of the country's economic life, its rich cultivation and its lively industry, must go to the province of *Häme* with the centre *Tampere*, which is reached in 3½ hours from Helsinki and in 4 hours from Turku. Häme and its population occupy a central position in the economic and intellectual development of the country.

The city of Tampere was founded by the Swedish-Finnish King Gustav III in the year 1779 on the shore of the *Tammer rapids*. (Height of fall 18 metres, 27,500 horse power). The development of the town began from 1820, when the Englishman James Finlayson founded the Finlayson cotton manufactory, which has now developed into Finland's biggest single factory (2,500 workmen). Tampere has more than 61,000 inhabitants and is the most typical manufacturing town of Finland, called the „Manchester of Finland“. Here the larger part of the textile industry, (cotton, linen, cloth and tricotage) also the shoe, leather, rubber and locomotive industry) is concentrated. In all there are 250 bigger and smaller factories in this town, with a total production of Fmk. 1,100,000,000:—.

Tampere town lies on both sides of the rapids and on the point land between *Näsijärvi* and the idyllic *Pyhäjärvi*. To the West stretches the wonderful and famous *Pyynikki* ridge at the foot of which grow 100 years old pine trees. From the 30 metres high belvedere is a beautiful view in all directions. On the plateau on the Western side of the *Pyynikki* ridge is a big public park with a watering place.

It is not difficult to become acquainted with the town of Tampere. From the Railway Station the 30 m. broad *Hämeenkatu* goes right through the centre of the town; this is the finest boulevard in Finland. Over the *Tammerkoski* rapids is a bridge „*Hämeensilta*“ which was constructed in 1929. This bridge is adorned with sculptures by the most famous now living Finnish sculptor, *Väinö Aaltonen*. In the close vicinity of this bridge is the Theatre, the most modern Library of the country and the old church. In front of the Library is the monument of the Finnish Folk Poet, *Alexis Kivi*. This monument is also the work of *Väinö Aaltonen*. Over the Häme bridge you come to the market place with the Town Hall and the official buildings. In the neighbourhood is also Finland's biggest Market Hall. The biggest business buildings and the banks

are situated on the *Hämeenkatu* and *Kauppakatu* (parallel streets). The *Hämeenkatu* ends in the *Esplanade*, which is 60 metres broad and 1½ kilometres long, and leads from *Näsijärvi* to *Pyhäjärvi*. At the crossing of *Hämeenkatu* and the *Esplanade* is the Monument of Liberty and at the Northern end of the *Esplanade* there is the fountain called „The Northern Girl“. In the vicinity of the Park near this fountain is the Provincial Museum of Häme, containing an ethnographical collection of 30,000 objects.

The finest monumental building is the Cathedral, also called the Church of St. John (constructed by L. Sonck in the year 1904). The Church is built of the typical Finnish grey granite with a steeple 65 metres high. This church is a typical exponent of the modern folk-romantic style. The works of art in the church are specially noteworthy; in the first place the altar piece (The Resurrection, M. Enckell) is the most remarkable impressionistic picture in Finland. Also the Art Museum founded some years ago is noteworthy.

Tampere is the youngest of the bigger towns in Finland and therefore cannot offer any old historical memorials, but the

more it seems to contain young, thrifty industry and powerful development.

It also shows a prominent industrial and enterprising spirit, the latest result of which is the airplane manufactory and the airplane field at present under construction. The town is clean and airy and its hotel can offer comfort and various grades of accommodation to suit all travellers.

In the surroundings of Tampere town is to be seen one of the most beautiful parts of Finland. Dense forests, beautiful lake scenery and well cultivated farm yards offer the traveller varying views.

Specially refreshing is a steamer trip on Lake *Näsijärvi* to *Ruovesi* and *Virrat*. On fine Summer days one cannot imagine a finer experience. The first open lakes change at *Murole Canal* (2 hours from Tampere) into sceneries most caressing to your eyes. You pass one narrow passage after the other. Here and there you see in the bays small villages and farms. The trip to *Virrat* takes 8½ hours but there is a good Restaurant on the steamer, and cabins in which the travellers also can sleep on board over night, should they wish to return to Tampere the next morning. It is also possible to

Landscape near Tampere

(W. West)



Kaukajärvi Lake, 12 km from Tampere

(H. Iffland)



Beach of Ikaalinen, 60 km from Tampere

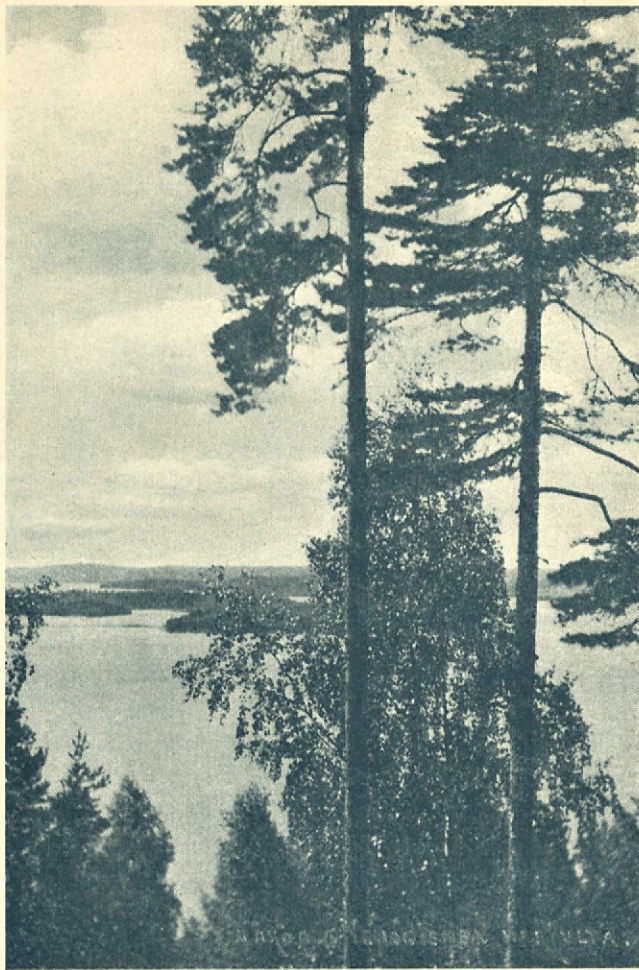


(B. Strömmer)

Rest hour at Vehoniemi, 25 km from Tampere

(H. Iffland)





View from Vehoniemi

(A. Laurant)

continue the trip from Virrat by auto to the nearest Railway station (Häapämäki 40 km.) and thence by railway to Jyväskylä from where a steamer leaves for Lahti, or else to proceed North to Wasa (5 hours).

15 kilometres West from Tampere lies the market town Nokia (6,000 inhabitants) on the shores of *Emäkoski* rapids (height of the fall 16 metres, 33,500 horse power), where a big rubber manufactory and paper mill are situated. From the mountains of *Kullanvuori* at the periphery of this town one has a magnificent view of the surroundings. Also a trip by autobus to *Hämeenkyrö* (35 kilometres), *Kyröskoski* (40

The lower harbour of Tampere with the mouth of the rapids



Nokia river (winter picture), 15 km from Tampere

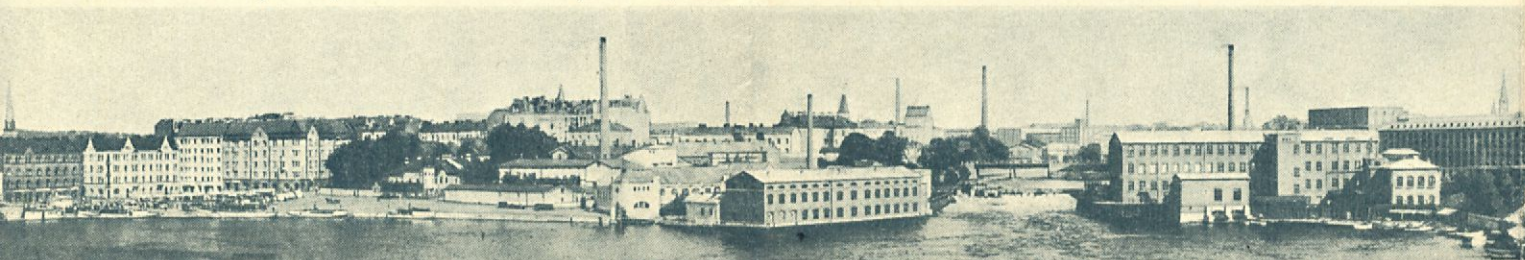
(Paul F. Lehtioke)

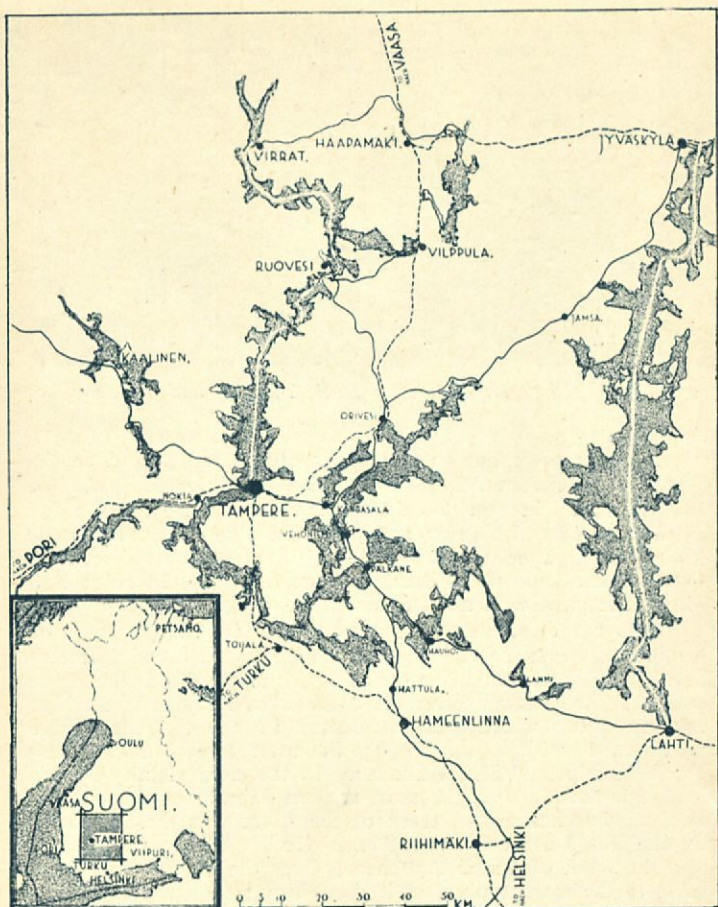
kilometres) and further to the small idyllic country town *Ikaalinen* on the shore of Lake *Kyrösjärvi* (60 kilom.) can be recommended. The last mentioned town with its Sanitariums is a pleasant and cheap place for people who like to pass their holidays in quiet surroundings and enjoy water, air and sunshine.

And last but not least. There is no more charming and finer route in Finland than the highway from Tampere through *Kangasala* to *Hämeenlinna*. In the first place you come to the fertile village of *Messukylä*, with an old church, built in the year 1400 to the right of the highway. Thence you proceed to the nice Lake *Kaukajärvi* and 14 kilometres further on you see the vast cultivated fields of *Kangasala*. Behind the fields you see the glittering Lake *Roine* and on its shore the Mansion House of *Liuksiala*, which belonged to the famous Queen Karin Månsdotter. In the Mansion House is a noteworthy county museum and in its vicinity the Chapel of Karin Månsdotter, which recently has been restored.

One has a fine view over the surroundings of the *Kangasala Church Parish* (18 kilometres) from the *Belvedere* on the *Church ridge*, at the foot of which an automobile highway is drawn. The trip continues along the *Kangasala ridge*, praised in song by poets, to *Kaivanto Canal*, which unites *Längelmävesi* on the left with *Roine* lake on the right. From here one proceeds to the tourist centre *Vehoniemi*, which, with its *belvedere*, its hotel and Restaurant offers the traveller rest and comfort for a longer time. The whispering of the pine trees, the glittering lakes, and behind the lakes the bluish ridges, give a feeling which cannot be described, but has to be experienced.

From the ridge of *Vehoniemi* the trip continues to the Church Village of *Pälkäne*, with the *belvedere*, to *Syrjän-*





harju, from where one has an outlook which can be compared to the view from Kangasala. From here one comes to Hämeenlinna (86 kilometres) in the vicinity of which is the National Park *Aulanko* which, with its fine Hotel, is one of the most noteworthy places of interest in Finland.

By automobile one can also go to Lahti (137 kilom.) or through Orivesi (60 kilom.) and Jämsä (120 kilom.) to Jyväskylä (181 kilom.).

For persons who are only able to spend a few days in Finland, a trip through the surroundings of Tampere can be greatly recommended. On such a trip they will easily and without difficulty be able to see the best which can be offered of the average standard of Finnish culture and its economic possibilities.

A great number of automobiles maintain regular traffic from Tampere over shorter and longer distances in all directions.

For further particulars regarding tours etc. apply to *Travel Bureau Sampo*, Kauppatori 1, Tampere.