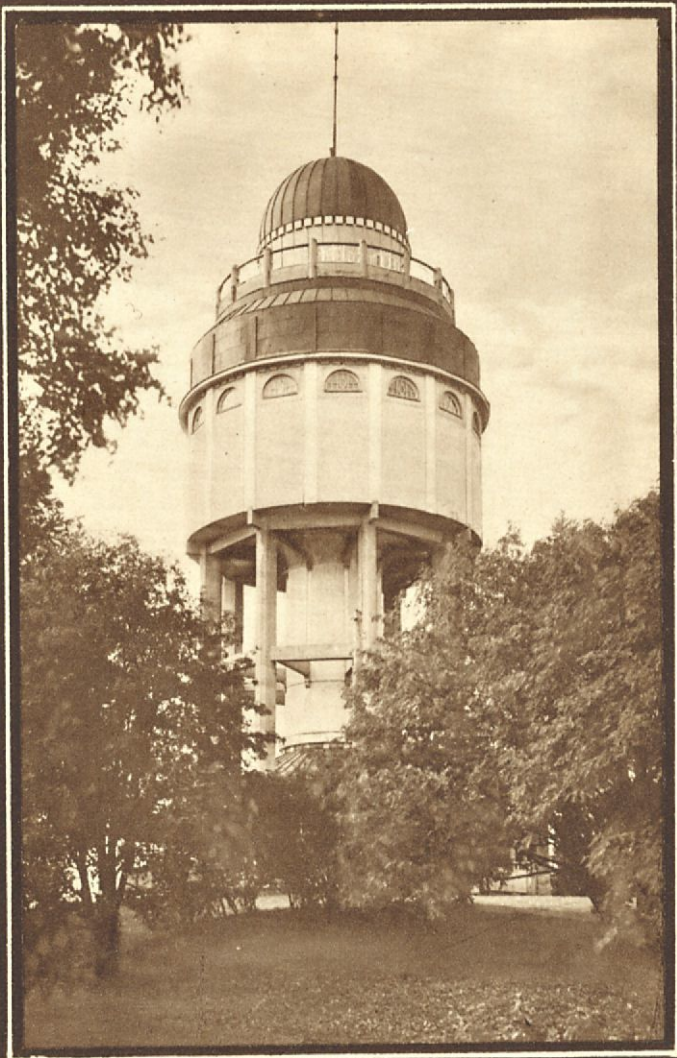


SUOMI

FINLAND



MIKKELI

A BEAUTIFUL
FINNISH
INLAND TOWN



The Church Park.

THE TOWN OF MIKKELI has begun to attract the attention of tourists in ever increasing degree during recent years. And well, indeed, it deserves this attention, for situated as it is beside beautiful tourist-routes or at their termination, Mikkeli, as the clean and up-to-date capital of an inland province, offers to tourists a peaceful and comfortable resting-place on their journey.

MIKKELI IS REACHED with equal ease by land or by water; in the first case by rail or motorcar, in the second by good lake-steamers. The tourist who has arrived at Mikkeli by land may then continue his journey along lovely inland water-routes to Savonlinna (Nyslott) or across the famous Great-Saimaa Lake to Lappeenranta. By land, good motor-roads and daily motorbus services connect the town with Heinola, Jyväskylä, Kuopio, Savonlinna, Lappeenranta and Joensuu. Thus a visit to Mikkeli can suitably be combined with any of the usual tours in the direction of East Finland.

Of the SIGHTS OF MIKKELI we might mention the water-tower situated on Naisvuori Hill in the town itself, from the top of which there is an extensive view over the town and its surroundings. At the foot of the tower is the

General view of Mikkeli.



Tourist Association's café. Of special historical interest is the stone sacristy at the northern end of Porrassalmenkatu, a 600-year old relic of the first church in Mikkeli. A church museum is about to be installed in the building. Beside the beautiful Gothic church of the town is the memorial to local men who fell in the war, an extremely effective work of art by the Finnish sculptor Johannes Haapasalo. Another work by the same artist is the memorial marking the grave of the officers who fell at the battle of Porrassalmi in 1789. The church of the rural parish of Mikkeli on the outskirts of the town is also worth a visit for the sake of its tasteful interior, the effect of which is heightened by the beautiful stained glass windows. The greatest charm of Mikkeli in the summer



The »Stone Sacristy».

consists of its luxuriant parks, amongst which the sports park with its individual athletic track is particularly worth seeing. Mikkeli also possesses new and modern swimming-baths, fulfilling the highest requirements, on the bank of the beautiful Pankalampi.

THE SURROUNDINGS OF MIKKELI are famous for beauty of landscape. Proof of this the tourist will find already on a first walk to Kaikunharju Ridge, a favourite goal for a stroll. Another ridge famous for its view, the so-called little Punkaharju, is situated about five kilometres north of the town beside a good motor-road. Another



The town church and surroundings.

beautiful place in the vicinity is Lamposaari island, on which there is a popular summer restaurant. The tourist will doubtless carry away with him a permanent memory of a visit to the famous battlefield of Porrassalmi. The road there leads through a lovely landscape, and arrived there the tourist sees opening before him one of the most beautiful bits of the interior, with waters glittering between high ridges and verdant fields. At the highest point of one of the ridges soars a monument, a reminder of the battles the Finns have had to endure in defence of their fair country. A villa on the bank of the straits has been furnished as a comfortable summer restaurant. While visiting Porrassalmi the opportunity can be taken to visit the Invalids' Home situated in the old manor of Kyyhkylä.

Beside the same highway is the manor of Hannila, the birthplace of the poet Karl August Tavaststjerna. Attention is also deserved by the manor of Paukkula, opposite the town on the other side of the bay, which has developed under the aegis of the Young People's High School of Finland into a noteworthy centre of cultural strivings.

MIKKELI OFFERS therefore to the tourist, in addition to a comfortable resting-place, so much natural and man-made beauty that a visit to Mikkeli should absolutely be included in every plan for a tour in Finland.

Porrassalmi.





Monument on Porrassalmi battlefield.

A FEW ADDRESSES IN MIKKELI:

B a n k s:

Helsingin Osakepankki, Porrassalmenkatu 27, tel. 3 83

Mikkelin Säästöpankki, Hallituskatu 3, tel 1 57.

O/Y. Pohjoismaiden Yhdyspankki, A/B Nordiska Föreningsbanken, Porrassalmenkatu 18, tel. 7

Savo-Karjalan Osake-Pankki, Porrassalmenkatu 21, tel. 3 00.

Suomen-Maatalous-Osake-Pankki, Savilahdenkatu 8, tel. 4 40.

R e s t a u r a n t s:

Mikkelin Seurahuone, Mannerheimintie 14, telephones 4 and 32.

Dining-rooms and Café Kaleva, Hallituskatu 2, tel. 5 04.

Tanskanen's Confectioners and Café, Porrassalmenkatu 28, tel. 85.

O t h e r f i r m s:

Hulda Nordenstreng, Styles, drapery, handiwork and gentlemen's outfitters, Savilahdenkatu 6, tel. 4 85.

Kaarre's flower and seed stores, Maaherrankatu 26, tel. 2 72.

Vilho Kärkkäinen, ready-made clothing, Hallituskatu 3, tel. 5 94.

Breitholtz O/Y, art-craftwork, Porrassalmenkatu 25, tel. 2 15.

Mikkelin Sanomat, newspaper, Mikonkatu 14, tels. 1 37 and 4 44.

O/Y Savon Rautakauppa, Porrassalmenkatu 26, tel. 4 56.
Suur-Savon Osuuskauppa r. l., co-operative stores, Hallituskatu 5, tels. 3 93 and 3 95.

Valokuvaustarpeiden asioimisto, photographic materials, propr. Roine Alve, Hallituskatu 2, tel. 5 40.

Antti Valjakka, florists and wreathmakers, Porrassalmenkatu 25, tel. 3 39.

Motorbus services:

Mikkeli—Heinola and Mikkeli—Warkaus—Joensuu, T. J. Honkanen, Pietarinkatu 2, tel. 6 87.

STEAMER-LINE:

Mikkeli — Lappeenranta. s/s »Tähti», »Tähti II» and »Tähti III», Mikkelin Höyrylaiva Osakeyhtiö (Steamer-Company of Mikkeli, Ltd) Teleph. 415, »Tähti» and »Tähti II» Teleph. 511, »Tähti III» Teleph. of the Manager director 8.

