

Käsikirjoja
N:o 8

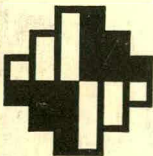
Handböcker

Handbooks

Guide to Finnish Statistics

1977

HELSINKI 1977



Tilastokeskus
Statistikcentralen
Central Statistical Office of Finland

F1 5.2

311.312 (Y80)

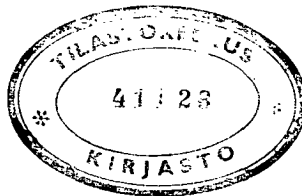
Käsikirjoja
N:o 8

Handböcker

Handbooks

[Tilastokeskus]

Guide to Finnish Statistics



1977

HELSINKI 1977

Helsinki 1977. Valtion painatuskeskus

ISSN 0355-2063
ISBN 951-46-3160-9

FOREWORD

The Guide to Finnish Statistics is a general guide and source for the users of Finnish statistics. The English version of the *Guide* is an abbreviation of the Finnish edition published in 1975.

The *Guide* is divided into two parts. The first part contains general information about various branches of statistics, the compilers of them - in particular the Central Statistical Office of Finland and the services it provides - and about statistical publications.

The second part presents the main characteristics of the various branches of statistics. It also presents most types of statistics produced by government offices and institutions. The data presented have been checked and corrected in 1976. With a few exceptions the statistics have been grouped and presented in the same order as in the *Statistical yearbook of Finland*.

The Guide to Finnish Statistics is edited by *Mauri Levomäki* and *Matti Kyrö*. The main part of the material for the *Guide* is translated by *Elisabeth Suomalainen*. The terms and names of publications have been provided by the compilers themselves.

Helsinki, Central Statistical Office of Finland, 1977.

Aaro Kenttä
Director

CONTENTS

Production of statistics in Finland	6
General	6
Central Statistical Office of Finland	6
Position and tasks	6
Organization	6
Information and information service	7
Library	8
Archives	8
Statistical publications of the Central Statistical Office	8
Distribution of publications	11
Other compilers of social statistics	11
State	11
Municipalities and their cooperation organizations	14
Compilation of statistics	15
Classifications	15
Presentation of statistics	16
Population	17
Statistics of population structure	17
Vital statistics	17
Population surveys	17
Population forecasts	18
Agriculture, forestry and fishing, hunting	18
Total calculations of agricultural income and costs	18
Agricultural profitability survey	18
Enterprise and income statistics of farm economy	19
Statistics of National Board of Agriculture	19
Food balance sheets	19
Statistics of prices of agricultural products and production inputs	19
Statistics of holdings	20
Statistics of land surveying	20

Statistics of veterinary service	20
Report on activities and operational statistics of National Board of Forestry ..	21
National forest inventory	21
Statistics of silvicultural and forest improvement works and their costs	21
Statistics of selected trees, seed collection stands and seed orchards	22
Statistics of wood consumption, total drain and forest balance	22
Stumpage prices of forests	22
Study of removals of commercial round wood	22
Statistics of commercial fellings and employment in logging	23
Forest-fire statistics	23
Fisheries statistics	23
Hunting statistics	24
Industry, construction	24
Industrial statistics	24
Volume index of industrial production	24
Statistics of repair of motor vehicles	25
Statistics of house construction	25
Statistics of dwelling production	25
Statistics of withdrawal of buildings and flats	26
Building cost index	26
Public roads and waterways	26
Cost index of road construction	26
Trade, enterprises	27
Trade statistics	27
Foreign trade statistics	27
Wholesale and production price index	27
Accommodation statistics	28
Enterprise statistics	28
Enterprise register	28
Statistics of turnover taxation	29
Statistics of closed-down enterprises subject to turnover tax	29
Financing, insurance and real estates	29
Bank statistics	29
Flow-of-funds accounts	30
Statistics of claims	30
Statistics of insurance companies	31

Transport	31
Statistics of passenger traffic	31
Statistics of long-distance lorry transport	31
Statistics of earnings and performance of private lorry drivers employed by Administration of Public Roads and Waterways	32
General Traffic Count	32
Statistics of motor vehicles	32
Railway statistics	33
Statistics of navigation	33
Statistics of canals and channels	33
Statistics of civil aviation	34
Statistics of communications	34
General economic conditions	34
National accounts	34
Regional accounts	35
Input-output studies	35
Seasonally adjusted statistical series	35
Statistics of the economy of communes, local federations and parishes	36
Living conditions	36
Statistics of income and wealth	36
Statistics of wages and salaries	37
Statistics of income security	37
Household survey	37
Consumer price index	38
Population census	38
Population census 1975	38
Rent statistics	38
Statistics of National Housing Board	39
Labour force and labour conditions	39
Labour force survey	39
Labour projections	39
Statistics of labour disputes	40
Statistics of employment service	40
Statistics of employment promoting training	40
Statistics of persons employed in public works	41
Statistics of National Board of Labour Protection inspections	41

Health	41
Statistics of health standard of population	41
Statistics of preventive health care system	42
Statistics of medical services	42
Statistics of causes of death	42
Statistics of industrial accidents	43
Statistics of financing and resources of health services	43
Social services	43
Statistics of social services	43
Statistics of personnel for social welfare	44
Statistics of social costs	44
Statistics of expenditure on communal social affairs	45
Statistics of institutional economy	45
Education, research	45
Statistics of institutions for general education	45
Statistics of institutions for vocational education	46
Statistics of university education	46
Statistics of educational structure of population	46
Statistics of research and development	47
Justice, elections	47
Criminal statistics	47
Statistics of road traffic accidents	47
Statistics of function of courts	47
Statistics of execution (of court decisions)	48
Statistics of crime damages	48
Statistics of elections	48
Environment	49
Statistics of sea water	49
Statistics of water supply and sewer systems	49
Hydrological statistics	49
Water statistics of industry	50
Water quality register	50
Statistics of climatology and geomagnetism	50
Statistics of air pollution	51
Radiation statistics	51

PRODUCTION OF STATISTICS IN FINLAND

General

In Finland the statistics produced by the state authorities for common use are called official statistics. The central producer of official statistics is the **Central Statistical Office of Finland (CSO)**, but many other government bodies also compile official statistics. Despite its dispersion, the production of official statistics is coordinated. The CSO develops, directs and supervises it. The CSO prepares annual programmes for development of official statistics and submits them to the Government.

THE CENTRAL STATISTICAL OFFICE OF FINLAND

Position and tasks

The positions and tasks of the CSO (founded in 1865) are stated in the act and ordinance of the Central Statistical Office of Finland (796/70 and 112/71):

The CSO is

- to produce and publish statistics of the human community and to keep registers which serve statistical activities
- to develop, direct and supervise the production of official statistics
- to follow the development of statistics abroad, to take part in the international work for the development and standardization of statistics and to apply international recommendations on statistics
- to produce annually a programme for the development of official statistics and to supervise the execution of it
- to promote the use of statistical methods and statistical data
- to run an information service

For the production of statistics the CSO has the right to obtain basic data from other state authorities and, in cases stated by law, from private persons and corporations. Additionally, the CSO can request state authorities to provide information needed for the development and supervision of the production of official statistics.

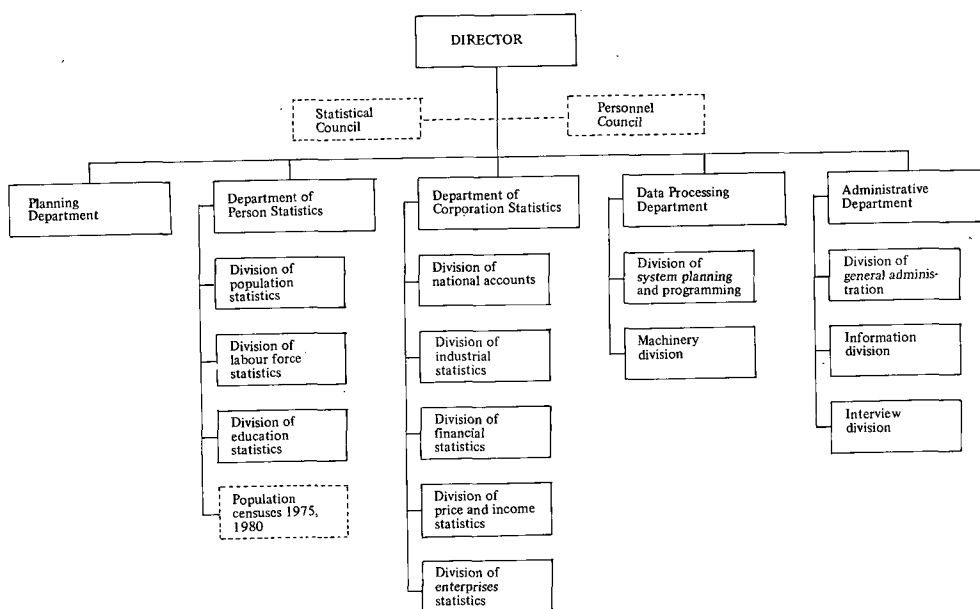
Organization

The CSO is subordinated to the Ministry of Finance with a Director as its head. The CSO is divided into five departments which are subdivided into divisions.

The Department of Person Statistics and Corporation Statistics are charged with the actual compiling of statistics.. The Data Processing Department plans, programs and executes the data processing and standardizes and develops the automatic data processing methods.

The Planning Department drafts the programme for development of official statistics, supervises its application and other standardization of statistics and plans new statistics and statistical systems.

The duties of the Administrative Department include general administration and services, i.a. staff administration, economy and accounting, publications and information service, international co-operation, library and archives.



Information and information service

The task of the CSO is to serve the human community by supplying the statistical data it requires. The CSO gives general guidance on the supply of statistics and the use of statistical data, serves visiting groups and persons with information, organizes lectures and courses, and produces brochures, guides etc. The CSO replies to domestic and foreign inquiries. If costs involved are small, the service is free of charge. Inquiries can be directed to the Information division. The CSO provides information about unpublished statistics also. A special unit of the Information division provides research surveys and other information services by commission. The prices charged are fixed by ordinance.

Library

The library of the CSO specializes in statistical publications of Finland and foreign countries as well as international organizations. There is also literature on statistics and ADP, as well as economics and other social sciences. The library receives over 600 periodicals, more than 500 of which are foreign. The number of volumes in the library is c. 100 000.

Publications can be borrowed, both as home and inter-library loans, or studied in the reading room of the library. The library also replies to inquiries and sends copies.

Archives

The archives of the CSO preserve, organize and list the documents accumulated and keep them available for researchers and other users.

The oldest document series in the archives consist of copies of population tables from 1749-1805. Basic data of statistics of the last decades are mainly confidential. When the term of secrecy has expired, the documents are free for use in the reading room of the CSO library.

The address of the library and archives is Annankatu 44, Helsinki (postal address PL 504, 00101 Helsinki 10) and phone 90 - 611 011 (exchange). The library and archives are open during civil service working hours (8.00 - 16.15, in June-August 8.00 - 15.15, closed Saturdays).

STATISTICAL PUBLICATIONS OF THE CENTRAL STATISTICAL OFFICE

The CSO publishes statistical information and research reports in many publication series and statistical publications. A description of them is given below.

The *Statistical yearbook of Finland* is an annual statistical publication which contains a wide selection of the most important statistical data of Finland and foreign countries. The book includes an alphabetical index, a list of references, a list of the publications in the series of the Official statistics of Finland (OSF) and also a list of the most important statistical publications produced by government bodies. The yearbook is an important reference book for the users of statistics. The texts and tables in the book are given in Finnish, Swedish and English.

The *Bulletin of Statistics* is a monthly publication which contains important monthly and quarterly statistics, i.e. index series. It also contains a monthly list of the latest OSF publications. The texts and tables in the Bulletin are given in Finnish, Swedish and English.

The *Report series* contains monthly and quarterly statistics, preliminary data of censuses and annual statistics, some final annual statistics and some special surveys. The Report series are divided into »Statistical Reports» and »Index Reports» which are again divided into sub-series.

The *Official statistics of Finland* contains census results, final annual and monthly statistics. The publications usually appear in Finnish and Swedish and include summaries and table texts in English. A complete list of the OSF is published in the Statistical yearbook of Finland, and a list of the most recent publications of the OSF monthly in the Bulletin of Statistics. The CSO compiles only part of the Statistics published in the OSF series. The publishing office or institution is mentioned if it is other than the CSO.

The series of Official statistics of Finland:

I A	Foreign trade (Board of Customs)
I A	Foreign trade, monthly publication (Board of Customs)
I Ba	Merchant fleet
I Bb	Navigation (Board of Navigation)
I B	Shipping between Finland and foreign countries (Board of Navigation)
III	Agriculture (National Board of Agriculture)
IV B	Statistics of income and property
VI A	Vital statistics
VI B	Causes of death
VI C	Population census
VII	Bank statistics
X	General education
XI	Public Health and Medical Care (National Board of Health)
XIII	Post and Telegraph Office (Administration of Post and Telegraphy)
XIV	Land surveying (National Board of Survey)
XVII A	Yearbook of forest statistics (Finnish Forest Research Institute)
XVIII A	Industrial statistics
XVIII C	House construction statistics
XVIII D	Production of dwellings
XIX	Public roads and waterways (National Board of Public Roads and Waterways)
XX	Railways (Finnish State Railways)
XXI	Social welfare and assistance (National Board of Social Welfare)
XXII A	Insurance companies (Ministry of Social Affairs)
XXIII	Judicial statistics

XXVI A	Accident statistics, industrial accidents (National Board of Labour Protection)
XXIX	Statistics of elections
XXXI	Communal finances
XXXII	Special social studies (Ministry of Social Affairs)
XXXV	General economic statistics
XXXVI	Yearbook of transport statistics
XXXVII	Higher education
XXXVIII	Research statistics
XXXIX	Farm economy
XL	Labour force survey

The *Research series* is divided into »Statistical Surveys» and »Studies of the CSO». Statistical special studies and surveys concerning social phenomena, statistical methods and methods of social sciences are published in them.

Guide books, classifications and nomenclatures are published in the series *Handbooks*.

Monthly and annual lists of publications of the CSO are published in the series *Publications*.

The most important statistical data from certain specialized fields have been collected into *statistical yearbooks* for the purpose of serving as easily comprehensible handbooks. All these are published with texts in Finnish and English, many of them with texts in Swedish also.

Beside the Statistical yearbook of Finland, the statistical yearbooks published by government bodies are:

Yearbook of transport statistics of the CSO is a compilation of a variety of transport data. The book has appeared in print since 1959 in OSF XXXVI and in duplicate form in 1956 and 1958.

Yearbook of environmental statistics of the CSO aims at providing a uniform description of the condition and development of natural and man-made environment. Of natural resources, their use and pollution are described, of the man-made environment housing, use of leisure-time, work environment, traffic and general social structure. The first experimental yearbook was published in 1972 in *Statistical Surveys* (n:o 50). The second yearbook appeared in 1977.

Statistical yearbook of the quality of life of the CSO aims at describing living conditions in Finland and factors influencing them. The publication is divided into three parts: I Economic factors, II Sectors of living conditions, III Some factors of equality. The first experimental yearbook will appear in 1977.

Yearbook of cultural statistics of the CSO contains data on arts, communications, museums, leisure, sports and youth activities. The first experimental yearbook will appear in 1978.

Yearbook of forest statistics of the Finnish Forest Research Institute contains data on forest resources, labour force in forestry, forestry production, transportation of roundwood, wood consumption and forest balance, production of forest industries and foreign trade. The yearbook has been published in OSF XVII A since 1969 and the *Folia Forestalia* series of the Finnish Forest Research Institute.

Yearbook of social welfare statistics of the National Board of Social Welfare contains data on social welfare administration and personnel, income security, social services and communal social costs. The yearbook has been published in OSF XXI B since 1957.

Distribution of publications

Statistical publications are distributed free of charge to foreign statistical offices, institutions, libraries and research institutes on the basis of exchange agreements. The Information division of the CSO is in charge of this distribution.

Publications can be ordered from the office of the Government Printing Centre (addr. PL 516, SF 00101 Helsinki 10, phone 90 – 539 011) or bought in the bookshop of the GPC (addr. Annankatu 44, Helsinki, phone 90 – 611 022). Prices are ratified annually. They are low and cover only part of the production costs.

OTHER COMPILERS OF SOCIAL STATISTICS

State

Several other Government offices and institutions beside the Central Statistical Office also compile social statistics. A list of Government statistics included in the development programme of official statistics for 1976-80 is given below.

Administration of Post and Telegraphy (Mannerheimintie 11 A, 00100 Helsinki 10, phone 90 – 661 201):

- Statistics of communications, p. 34

Agricultural Economics Research Institute (Rukkila, 00001 Helsinki 100, phone 90 – 534 161):

- Total calculations of agricultural income and costs, p. 18
- Agricultural profitability survey, p. 18

- Food balance sheets, p. 19
- Statistics of prices of agricultural products and production inputs, p. 19

Board of Customs (Erottajankatu 2, 00120 Helsinki 12, Phone 90 – 661 411):

- Foreign trade statistics, p. 27

Board of Navigation (Vuorimiehenkatu 1, 00140 Helsinki 14, phone 90 – 650 411):

- Statistics of navigation, p. 33

Finnish Forest Research Institute (Unioninkatu 40 A, 00170 Helsinki 17, phone 90 – 611 401):

- National forest inventory, p. 21
- Statistics of silvicultural and forest improvement works and their costs, p. 21
- Statistics of selected trees, seed collection stands and seed orchards, p. 22
- Statistics of wood consumption, total drain and forest balance, p. 22
- Stumpage prices of forests, p. 22
- Study of removals of commercial roundwood, p. 22
- Forest-fire statistics, p. 23

Finnish Meteorological Institute (Vuorikatu 24, 00100 Helsinki 10, phone 90 – 171 922):

- Statistics of climatology and geomagnetism, p. 50
- Statistics of air pollution, p. 51

Finnish State Railways (Vilhonkatu 13, 00100 Helsinki 10, phone 90 – 7071):

- Railway statistics, p. 33

Game and Fisheries Research Institute (Korkeavuorenkatu 21, 00130 Helsinki 13, phone 90 – 659 208):

- Fisheries statistics, p. 23

Institute of Marine Research (Tähtitorninkatu 2, 00140 Helsinki 14, phone 90 – 651 566):

- Statistics of sea water, p. 49

Institute of Radiation Protection (Pohjoisesplanadi 31 A, 00100 Helsinki 10, phone 90 – 659 588):

- Radiation statistics, p. 51

Ministry of Agriculture and Forestry (Hallituskatu 3, 00170 Helsinki 17, phone 90 – 1601):

- Statistics of veterinary services, p. 20
- Hunting statistics, p. 24

Ministry of Labour (Uudenmaankatu 29 A, 00120 Helsinki 12, phone 90 – 716 311):

- Statistics of commercial fellings and employment in logging, p. 23
- Statistics of employment service, p. 40
- Statistics of employment promoting training, p. 40
- Statistics of persons employed in public works, p. 41

Ministry of Social Affairs (Snellmaninkatu 4-6, 00170 Helsinki 17, phone 90 – 1601):

- Statistics of insurance companies, p. 31
- Statistics of social costs, p. 44

National Board of Agriculture (Mariankatu 23, 00170 Helsinki 17, phone 90 – 661 771):

- Statistics of National Board of Agriculture, p. 19

National Board of Aviation (Siltasaarenkatu 12 A, 00530 Helsinki 53, phone 90 – 765 811; until about the end of 1977, whereafter: Helsinki-Vantaa Airport, 01531 Helsinki-Vantaa – Lento, phone 90 – 82 921)

- Statistics of civil aviation, p. 34

National Board of Forestry (Erottajankatu 2, 00120 Helsinki 12, phone 90 – 601 511):

- Report on activities and operational statistics of National Board of Forestry, p. 21

National Board of Health (Siltasaarenkatu 18 A, 00530 Helsinki 53, phone 90 – 718 511):

- Statistics of health standard of population, p. 41
- Statistics of preventive health care system, p. 41
- Statistics of medical services, p. 42
- Statistics of financing and resources of health services, p. 43

National Board of Labour Protection (Hämeenkatu 13 b A, 33100 Tampere 10, phone 90 – 931 – 37 411):

- Statistics of Board of Labour Protection inspections, p. 41
- Statistics of industrial accidents, p. 43

National Board of Public Roads and Waterways (Eteläesplanadi 4, 00130 Helsinki 13, phone 90 – 630 741):

- Public roads and waterways, p. 26
- Statistics of earnings and performance of private lorry-drivers employed by Administration of Public Roads and Waterways, p. 32
- General Traffic Count, p. 32
- Statistics of canals and channels p. 33

National Board of Social Welfare (Siltasaarenkatu 18 C, 00530 Helsinki 53, phone 90 – 73 191):

- Statistics of income security, p. 37
- Statistics of social services, p. 43

- Statistics of personnel for social welfare, p. 44
- Statistics of expenditure on communal social affairs, p. 45
- Statistics of institutional economy, p. 45

National Board of Survey (Kirkkokatu 3, 00170 Helsinki 17, phone 90 – 12 513):

- Statistics of holdings, p. 20
- Statistics of land surveying, p. 20

National Board of Waters (Pohjoinen Rautatiekatu 21 B, 00100 Helsinki 10, phone 90 – 40 281):

- Statistics of water supply and sewer systems, p. 49
- Hydrological statistics, p. 49
- Water statistics of industry, p. 50
- Water quality register, p. 50

National Housing Board (Malminkatu 34, 00100 Helsinki 10, phone 90 – 60 931):

- Statistics of National Housing Board, p. 39

Some other Government bodies – including State or corresponding companies – also make statistical inquiries into matters within their sphere of action. These bodies also have recourse to registers and other data materials comparable to statistics as far as users are concerned. Among these are the Social Insurance Institution, The Post Bank, The National Board of Building, The Regional Planning Association, The Bank of Finland, The State Alcohol Monopoly (Alko), The Finnish Broadcasting Company (Yleisradio).

Universities and high-schools also make statistical studies, the results of which are presented in scientific publications.

Municipalities and their cooperation organizations

Several municipalities also compile statistics, mostly of the type used by themselves for administration and planning. The largest cities (e.g. Helsinki, Tampere, Turku) have permanent statistical offices, whereas the production of statistics in other municipalities only remains a secondary task of bodies in charge of planning and the like. Statistics are also compiled by various municipal cooperation organizations.

Additional data e.g. from The Finnish Municipal Association (Albertinkatu 34, 00180 Helsinki 18, phone 90 – 640 811) and The Association of Finnish Cities (Eduskuntakatu 4, 00100 Helsinki 10, phone 90 – 440 261).

COMPILATION OF STATISTICS

The basic data of the statistics are usually obtained either from other authorities or through questionnaires sent and collected by mail. To some extent interviewers are used, e.g. in the household survey.

The statistics are public. The aim is to make statistical publications available for everyone. The compiler also provides such data which are not published, e.g. because of high costs or little demand.

The basic data of statistics are secret. The use of basic data is restricted by legislation. The general principle is that they can be used for statistical or research purposes only.

Classifications

Classifications based on the recommendations of the UN and other international organizations are widely used in Finnish statistics. The following list contains the most important classifications used in Finland.

The regional classifications are mostly based on the administrative organization. The commune, the smallest administrative unit, is also the basic regional unit in statistics. Statistics produced by larger areas, provinces or regional planning areas consist of aggregates of communes. Communes, provinces and regional planning areas are listed in *Kuntanumerointi* (commune index) which is published every year by the CSO. Other regional classifications are also used, but to a smaller extent.

The Standard Industrial Classification (published in the CSO Handbooks n:o 4, 1972) is an adaptation for Finland of the ISIC (International Standard Industrial Classification of All Economic Activities, UN 1968).

The Classification of Institutional Sectors (CSO, Handbooks n:o 5, 1975) is based on the SNA (A System of National Accounts, UN 1968).

The Classification of Financial Assets and Liabilities (CSO, Handbooks n:o 6, 1975) is also based on the SNA.

The classification of commodities used in Finland is based on the joint Nordic Commodity Classification for Economic Statistics (Statistical Reports of the Nordic Countries 21, Stockholm 1971) which is consistent with the Brussels Tariff Nomenclature (BTN). The SITC (Standard International Trade Classification) and the CSTE (Commodity Classification for Transport Statistics in Europe) are also used, especially in foreign trade statistics.

The classifications of occupations, last published in *Asunto- ja elinkeinotutkimuksen ammattiluokitus* (classification of occupations for the 1975 population census, CSO 1975), is based on *Pohjoismainen ammattiluokittelu* (Nordic standard classification of occupations, Helsinki 1963) and on the ISCO (International Standard Classification of Occupations, ILO 1968). The PAL is also an adaptation of the earlier ISCO.

The classification of education, published in Finnish in *Koulutusluokitus* (classification of education, CSO, Handbooks n:o 1, 1976), is constructed on the basis of classifications used in other Nordic countries and of the ISCED (International Standard Classification of Education, UNESCO 1972).

The socio-economic classification, published in Finnish in *Aakkosellinen ammattihakemisto, Väestölaskenta 1970* (alphabetical index of occupations, population census 1970, CSO, 1970), is based on the European Recommendations of the 1970 Population Censuses, UN 1969.

The classification of diseases and causes of death, in Finnish in *Tautiluokitus* (classification of diseases, National Board of Health, 1969), is based on the International Classification of Diseases, WHO 1967.

PRESENTATION OF STATISTICS

Information is given below on 106 branches of official statistics. For each branch information is given on the compiler, usually specifying the department or division which produces the statistics.

The second part of each presentation is a short description of the main contents of the statistics. More detailed information can be obtained from the compiler.

Thirdly, the publications and other sets of information are presented. Publications with English titles contain at least a summary and table texts in English. Exceptions are the CSO publications Statistical Reports, Index Reports and Statistical Surveys, in which usage varies by publication. Further information can be obtained from the compiler or from the Information division of the CSO.

POPULATION

Statistics of population structure

- Compiled by CSO, Division of population statistics.
- Contents Resident population: year of birth (age), sex, marital status, place of residence, main language, religious denomination.
- Information Data since 1950 in OSF VI and *Statistical Surveys*. Population census data 1950, 1960 and 1970 in OSF VI C.
Data on population structure in *Statistical yearbook of Finland*, OSF VI A *Vital statistics*, *Bulletin of Statistics* and *Statistical Report VÄ*.

Vital statistics

- Compiled by CSO, Division of population statistics.
- Contents Common data in vital statistics: births, deaths, marriages, divorces, separations, migration, sex, language, nationality, religious denomination. Additionally on births: birth order, live/still birth, age of parents, legitimate/illegitimate, births, month of birth, fertility rates.
Additionally on divorces and separations: order of marriage, plaintiff, motivation of decision, number and age of children in breaking-up marriage, occupation. Additionally on migrants: place (or country) of departure and arrival.
- Information Annually *Vital statistics* (OSF VI). Data since 1750. Also five- and ten-year publications. Statistics also in *Statistical yearbook of Finland* and *Bulletin of Statistics*.

Population surveys

- Compiled by CSO, Division of population statistics.
- Contents Population structure and changes (nativity, mortality and migration), population development.
Data partly based on population censuses, partly on population registers.
- Information Life tables since 1890 in OSF VI (since 1940 VI A); surveys of population of Finland since 1750

Population forecasts

Compiled by	CSO, Division of population statistics.
Contents	Forecasts based on suppositions of nativity, mortality, migration and emigration as well as data on present population structure.
Information	<i>Statistical Surveys</i> 1949:38, 1964:41, 1969:45 I and II, 1971:49, 1974:52. <i>Statistical Report</i> VÄ 1971:10, VÄ 1973:6, VÄ 1975:12.

AGRICULTURE, FORESTRY AND FISHING, HUNTING

Total calculations of agricultural income and costs

Compiled by	Agricultural Economics Research Institute.
Contents	Annual development of various agricultural gross return and cost items as well as income.
Information	Calculations not published. Material since 1951, information available from Agricultural Economics Research Institute.

Agricultural profitability survey

Compiled by	Agricultural Economics Research Institute.
Contents	Annual economic results from book-keeping farms by survey area, size category of farm and line of production. Voluntary book-keeping by private farms.
Information	Data since financial year 1960/61 in research institute series <i>Publications of the Agricultural Economics Research Institute</i> and <i>Research reports of the Agricultural Economics Research Institute</i> . Separate reports based on same material in same series. Earlier data since 1912 in series <i>Publications of the Board of Agriculture</i> .

Enterprise and income statistics of farm economy

Compiled by	CSO, Division of national accounts.
Contents	Returns of farm economy by commodity, expenditure by type partly by commodities.
Information	Data from taxation material since 1973. Data for 1973 in 1977.

Statistics of National Board of Agriculture

Compiled by	National Board of Agriculture, Statistical Bureau.
Contents	Agricultural production; labour input of resident farm population; own and hired labour force; other agricultural production input; farm subsidies and structural rationalization; forest holdings of farms; dairies, abattoirs; food-stuff mixers; (at five-year intervals) all forest holdings, incl. holdings not belonging to farms.
Information	<i>Census of Agriculture</i> in OSF III. First from 1910, last from 1969. Annual agricultural statistics in OSF III since 1921. Older data on agriculture in same series since 1969. Board of Agriculture: Statistics in <i>Monthly Review of Agricultural Statistics</i> and <i>Publications of the Board of Agriculture</i> . Most common output area is agricultural centre (18), until 1970 agricultural society (21). Data by commune from Census of Agriculture and farm register, since 1975 also from forest holding register.

Food balance sheets

Compiled by	Agricultural Economics Research Institute.
Contents	Domestic production, imports, exports and domestic use of various foodstuffs, yearly/daily per-capita consumption. Calorie, protein and fat content of food.
Information	Calculations in FAO yearbook <i>Production Yearbook</i> , also from Agricultural Economics Research Institute and its publications.

Statistics of prices of agricultural products and production inputs

Compiled by	Agricultural Economics Research Institute.
Contents	Price data on chief agricultural products and production inputs, producer price indexes of agricultural products and cost price indexes of agriculture monthly and quarterly.

Information Since 1967 in Board of Agriculture series *Monthly review of Agricultural Statistics* and *CSO Bulletin of Statistics* (indexes).
Index explanations in series *Publications of the Agricultural Economics Research Institute* n:o 29.

Statistics of holdings

Compiled by National Board of Survey, Inspection Division.

Contents Number of holdings by size category.

Information Statistics since 1924; in *Maanmittaushallituksen julkaisuja* (Publications of Land Survey). Since 1960 annually in OSF XIV A *Land Surveying*.

Statistics of land surveying

Compiled by National Board of Survey, Inspection Division.

Contents Annual report of activity of Land Survey divisions and map compilation division, provincial and district survey offices during report period; contains several types of statistics.

Information Report annually in OSF XIV A since 1887. Present name *Land Surveying*.

Statistics of veterinary services

Compiled by Ministry of Agriculture and Forestry, Veterinary department.

Contents Data on number of veterinary surgeons, occurrence of various animal diseases, number and activities of abattoirs and meat production plants approved of by food control, quality of consumption milk in shops.

Information Statistics in *Report of the Veterinary Department of the Ministry of Agriculture and Forestry*, 1930-40 annually, since then several years together. Last report 1973 with annual data 1964-70. Also in *Statistical yearbook of Finland*.

Report on activities and operational statistics of National Board of Forestry

- Compiled by** National Board of Forestry, Office of calculation and statistics.
- Contents** Report: general outline of Board activities.
Operational statistics: data on areas, labour force, average daily earnings, accidents, forest improvement and drainage, forest fires, timber felling, haulage and delivery, building of roads and floating channels, forestry training (until 1973), economic output.
- Information** Report published year after report year. Operational statistics as duplicate in spring, later as supplement to Forest Research Institute *Yearbook of Forest Statistics* (OSF XVII A; Folia Forestalia). Older data spanning century in Forestry Board reports. First report in 1865.

National forest inventory

- Compiled by** Finnish Forest Research Institute, Department of Forest Inventory and Yield.
- Contents** Forest resources and their development; forest ownership conditions. Commune is the smallest area-unit of the systematic sample. Results with sufficient reliability are calculated for minimum areas of approx. 200 000 ha. Forestry board district is the most common area-unit.
- Information** Serial publications of the Finnish Forest Research Institute: *Metsäntutkimuslaitoksen julkaisuja* (Communicationes Instituti Forestalis Fenniae) and *Folia Forestalia*.

Statistics of silvicultural and forest improvement works and their costs

- Compiled by** Finnish Forest Research Institute, Department of Mathematics.
- Contents** Annual amounts of silvicultural and forest improvement works (seeding and planting, seedling-stand improvement, forest fertilization, forest ditching etc.), total costs and costs per unit, State loans and grants (in private forests) for silvicultural and forest improvement works as amounts of work (in hectares and kilometres) and amounts of money.
- Information** *Yearbook of Forest Statistics* (OSF XVII A, Folia Forestalia).
Data by Forestry board districts beginning from 1965 and time series for whole country beginning from 1950.

Statistics of selected trees, seed collection stands and seed orchards

- Compiled by Finnish Forest Research Institute, Department of Forest Genetics.
- Contents Amount and regional distribution of basic material used in Finnish tree breeding activities.
- Information *Yearbook of Forest Statistics* (OSF XVII A, *Folia Forestalia*).

Statistics of wood consumption, total drain and forest balance

- Compiled by Finnish Forest Research Institute.
- Contents Regional amounts of wood consumption and forest drain in Finland.
- Information Since 1962 in *Folia Forestalia*. Earlier in *Metsäntutkimuslaitoksen julkaisuja* (Communications Instituti Forestalis Fenniae).

Stumpage prices of forests

- Compiled by Finnish Forest Research Institute.
- Contents Stumpage prices of private forests.
- Information *Yearbook of Forest Statistics* (*Folia Forestalia* and OSF XVII A). First yearbook for 1968. Earlier data in *Folia Forestalia*.

Study of removals of commercial roundwood

- Compiled by Finnish Forest Research Institute.
- Contents Removal and flow of commercial roundwood in Finland 1964, 1967, 1970 and 1973.
- Information Data for 1964 and 1970: *Folia Forestalia* n:o 20 and 179. Data 1973 in *Folia forestalia* at the end of 1976. Data 1967: Pälä – Roitto: *Removal and flow of commercial roundwood by districts in 1967*. Publication of Ministry of communications and public works, Employment Division. Helsinki 1969.

Statistics of commercial fellings and employment in logging

Compiled by	Ministry of Labour, Statistical Office.
Contents	Volume of roundwood sold for industry, exports and transport, labour force in logging, silvicultural work and floating monthly.
Information	Annually <i>Yearbook of Forest Statistics</i> (Folia Forestalia, OSF XVII A, since 1968), quarterly <i>Labour Reports</i> (since 1971), monthly <i>Markkina-puun hakkuu- ja työvoimatilastoja</i> (Statistics of commercial fellings and employment in logging since 1941, <i>Työvoimaministeriön tilastoja</i> (Employment service statistics from the Ministry of Labour) since 1972. Monthly data also in <i>Bulletin of Statistics</i> .

Forest-fire statistics

Compiled by	Finnish Forest Research Institute, Department of mathematics.
Contents	Number of forest fires and areas burnt annually and by causes.
Information	Since 1969 in <i>Yearbook of Forest Statistics</i> (Folia Forestalia and OSF XVIII A). Earlier in <i>Folia Forestalia 32 and 47</i> (first data for 1966). Data for 1952–69 also from annual reports of the National Board of Forestry (OSF XVII:49 and B1).

Fisheries statistics

Compiled by	Game and Fisheries Research Institute, Fisheries Division.
Contents	Yearly number and nominal catches (amount and value) of full-time, part-time and non-professional fishermen in sea and freshwater fisheries. Monthly catch and effort of main species by sub-divisions, and by gear classification since 1974 in sea fisheries and 1976 in freshwater fisheries. Sea fisheries: sub-divisions of International Council for the Exploration of the Sea (ICES).
Information	Since 1962 in <i>Statistical yearbook of Finland</i> , since 1974 also in <i>Suomen Kalatalous</i> (Fisheries of Finland), by Fisheries Division. Nominal catches by subdivisions and gear classification in <i>Tiedonantoja</i> and <i>Meddelanden</i> (Reports), by Fisheries Division.

Hunting statistics

Compiled by	Ministry of Agriculture and Forestry, Department of Fishing and Hunting.
Contents	Game, risk of excessive hunting, structure of body of hunters.
Information	Material since 1973, unpublished. Available from compiler or Game Research Department of Game and Fisheries Research Institute.

INDUSTRY, CONSTRUCTION

Industrial statistics

Compiled by	CSO, Division of industrial statistics.
Contents	Industrial activity by branch of industry: data on personnel, production, fixed assets, driving power, energy. Quantity and value of products, raw and packaging materials.
Information	Annual one-volume publication <i>Industrial statistics</i> (OSF XVIII A) since 1884, two-volume since 1964. Preliminary data on sample basis since 1954 in <i>Bulletin of Statistics</i> , since 1968 in <i>Statistical Report TE</i> . Older publications: <i>Tehtaastojohtokunnan tilastolliset selosteet</i> 1842–1876 (Statistical reports of industrial board); <i>Käsityötilasto</i> (Craft statistics) OSF XVIII B in 1913, 1923 and 1934; corresponding data 1953 and 1963 in census of business enterprises, OSF XXXV.

Volume index of industrial production

Compiled by	CSO, Division of industrial statistics.
Contents	Development of volume index of industrial production by industries
Information	Monthly index in <i>Statistical Report TE</i> . Revised and final annual index with monthly index in same series. Also in <i>Bulletin of Statistics</i> . Longer index series in <i>Statistical yearbook of Finland</i> .

Statistics of repair of motor vehicles

- Compiled by CSO, Division of industrial statistics.
- Contents Data on personnel, production, fixed assets, driving power, energy, value by type of repairs.
- Information Since 1972 annually in *Statistical Report TE*.

Statistics of house construction

- Compiled by CSO, Division of industrial statistics.
- Contents House construction requiring permission: structural engineering data, location of building, data on purpose of use of building, future proprietor.
- Information Annual publication *Statistics of house construction (OSF XVII C)* since 1960. Data 1952–59 as separate articles in *Bulletin of Statistics*. Since 1967 quarterly statistics of house construction and monthly statistics of building permissions in *Statistical Report RA*. Also unpublished data from compiler.

Statistics of dwelling production

- Compiled by CSO, Division of industrial statistics.
- Contents Dwelling construction requiring permission: Type of house, type of flat, number of flats and rooms, floor space, equipment, proprietor.
- Information Annual publication *Production of dwellings (OSF XVIII D)* since 1966, quarterly *Statistical Report RA* since 1966. Older data in *Social Review* for towns since 1912, urban communes since 1963 and rural communes since 1957. Unpublished data available from compiler.

Statistics of withdrawal of buildings and flats

- Compiled by CSO, Division of industrial statistics.
- Contents Withdrawal of buildings and flats e.g. by cause of withdrawal, structural engineering data, type of house and flat and number of rooms.
- Information Data so far unpublished due to incomplete coverage of basic data. Basic material since 1971.

Building cost index

- Compiled by CSO, Division of industrial statistics.
- Contents Monthly development of building production costs: Prices of materials with customary reductions and labour costs in accordance with collective bargaining agreement.
- Information Base year of present building cost index 1973 (since end of 1976) previously 1964. Since 1968 monthly and annually in *Index Report* RK. Older data in separate articles in *Bulletin of Statistics* since 1951 and Bank of Finland Institute for Economic Research publication series A:13, *Taloudellisa selvityksiä* (Economic studies).

Public roads and waterways

- Compiled by National Board of Public Roads and Waterways.
- Contents Number and structure of public roads, bridges and ferries, Board of Public Roads and Waterways proportion of construction and maintenance.
- Information Annual publication *Roads and Waterways* OSF XIX since 1953. *Reports of the Administration of Roads and Waterways* Annually 1889–1952 on works supervised by Board (same in Swedish 1885–88). Also in *Yearbook of Transport Statistics* and Statistical yearbook of Finland.

Cost index of road construction

- Compiled by CSO, Division of enterprise statistics.
- Contents Cost development of construction and improvement of roads under National Board of Public Roads and Waterways (TVH): TVH wages, rent/hour for rented machinery by group of machines, prices of subcontracts (crushing, paving and other works), prices of materials, lorry transports by outsiders and fees, changes in general costs.
- Information Cost index of road construction since 1964. Base year 1963 until end of 1972. Since 1973 base year 1972. Index since 1969 in *Index Report* TR initially quarterly, monthly since 1974. Also as longer series in *Bulletin of Statistics*, *Statistical yearbook of Finland* and *Yearbook of Transport Statistics*.

TRADE, ENTERPRISES

Trade statistics

Compiled by	CSO, Division of enterprise statistics.
Contents	Monthly sales and balance debts due of wholesale and retail trade, size of full-time and part-time personnel, working hours completed.
Information	Data monthly in <i>Statistical Report KA</i> since 1968, <i>Bulletin of Statistics</i> since 1955.

Foreign trade statistics

Compiled by	Board of Customs, Statistical section of Board of Customs.
Contents	Volume and value of Finnish exports and imports by commodity and country, value per unit and volume indexes of exports and imports, foreign trade transports by mode of transport. Commodity classifications used: CCCN (Nomenclature of the Customs Co-operation Council) SITC (Standard International Trade Classification) CSTE (Commodity Classification for Transport Statistics in Europe) Also exports by producing industry and imports by use of commodities in classification used in examinations of foreign trade structure. Classification of countries by countries of purchase and origin in imports, by countries of sale and consumption in exports.
Information	Annual publication <i>Foreign trade (OSF I A)</i> since 1925. Earlier data available since 1865. <i>Foreign trade, monthly publication (OSF I A)</i> since 1904, regularly since 1944. Duplicate series <i>Foreign trade</i> : Monthly surveys, separate studies and reports of foreign trade. Foreign trade statistics also in CSO <i>Statistical yearbook of Finland</i> and <i>Bulletin of Statistics</i> .

Wholesale and production price index

Compiled by	CSO, Division of price and income statistics.
Contents	Price development monthly. Four separate indexes in series: 1) wholesale price index, 2) production price index, 3) import price index (cif-prices) and 4) export price index (fob-prices).

Information Present price index series fourth by CSO. Reference years of first series 1913, second 1926, third 1935. Reference year of present series 1949. Data monthly in *Index report TH*.
Import and export price indexes monthly in *Bulletin of Statistics*.

Accommodation statistics

Compiled by CSO, Division of enterprises statistics.

Contents Capacity of licensed places of accommodation (hotels, motels, boarding houses, motor inns and doss-houses), utilization of capacity.

Information Since 1971 in *Statistical Report LI*; data on capacity annually, utilization of capacity monthly since 1973 and annually.

Enterprise statistics

Compiled by CSO, Division of enterprise statistics.

Contents Data on corporation branch of industry, turnover, personnel, salaries, balance of income and property, investments.

Information Annually *Statistical Reports RT* and *YR* Balance statistics of Industry (since 1960), Bus transport (since 1968), Sea transport, Stevedoring and Forwarding (since 1961), Travel agencies (1968, 1969, 1970, data since 1964), House construction (1967, 1968, data since 1961), the Activities of by-contractors and subcontractors (since 1970), Housing corporations (since 1968), Trade (since 1969). Balance data on air traffic since 1964, unpublished. Balance data on service industries since 1970, chiefly for national accounts purposes.

Enterprise register

Compiled by CSO, Division of enterprise statistics.

Contents Register contains all enterprises and establishments subject to turnover tax with data on: name and address, identification code for both enterprise and establishment, industry, location (by commune), type of owner, legal form, language, turnover, personnel etc.

Established in 1968; completed by enquiry at two-year intervals and data from turnover tax authorities.

Information Data always after complementary enquiry in *Statistical Report YR*. Results of 1974 enquiry during 1977. Classified register data delivered as requested as photo-copies from computer list or as magnetic tapes.

Statistics of turnover taxation

Compiled by CSO, Division of enterprise statistics.

Contents Activity of enterprises subject to turnover tax, turnover tax paid, tax flow-in.

Information Monthly and annually in *Statistical Report YR* since 1973. Earlier at two-year intervals in *Statistical Report KA* since 1965. Data 1961–64 in *Bulletin of Statistics*, data 1941–1942 and 1944–60 in OSF IV D.

Statistics of closed-down enterprises subject to turnover tax

Compiled by CSO, Division of enterprise statistics.

Contents Closing down of enterprises subject to turnover tax, by industry, age of enterprise, cause of closing down.

Information Since 1973 at four-month intervals and annually in *Statistical Report YR*, earlier in *Statistical Report KA* since 1966. Since 1976 annually only.

FINANCING, INSURANCE AND REAL ESTATES

Bank statistics

Compiled by CSO, Division of financial statistics.

Contents Profit and loss and balance sheet accounts of banks; also data elucidating special features of banks.

Information Monthly and quarterly bank statistics since 1974 in *Statistical Report RT*. Monthly statistics 1909–1973 *Bank of Finland*, commercial and mortgage banks in OSF VII D.

Since 1974 annual statistics in one publication containing data on Bank of Finland, Post Bank, commercial banks, co-operative banks, savings banks, mortgage banks and institutions; statistics by monetary institution in *Statistical Report* RT, by group of monetary institution in OSF VII. Earlier data in OSF VII.

Data also in *Statistical yearbook of Finland* and *Bulletin of Statistics*.

Flow-of-funds accounts

Compiled by CSO, Division of financial statistics.

Contents All financial flows and stocks of the economy.
Financial balance: assets and liabilities by claims and by sectors.
Flow-of-funds accounts: changes in assets and liabilities by sectors and claims, net advances of sectors, gross capital formation, financing and capital formation.

Information Annually in *Statistical Report* RT since 1969, each with revised data on previous year. Statistics on financing 1953–69 by Bank of Finland in *Taloudellisia selvityksiä* (Economic studies). Since 1970 finance accounts annually in *Statistical Report* RT, also with data on two years at a time.

Statistics of claims

Compiled by CSO, Division of financial statistics.

Contents Financial market with factors such as loans and deposits of monetary institutions, interests; promissory notes; financing of hire-purchase trade.

Information Credit stock since 1971 semi-annually in *Statistical Report* RT. Earlier data in Bank of Finland Institute for Economic Research series *Taloudellisia selvityksiä* (Economic studies; 1948–67) and *Statistical Report* (1968–69).

Loans and deposits since 1971 monthly in *Statistical Report* RT, earlier in above Bank of Finland series *Statistical Report* since December 1964. Interests since 1973 quarterly in *Statistical Report* RT (data since late 1971).

Financing of hire-urchase trade since early 1971 quarterly in *Statistical Report* RT. Earlier by Bank of Finland, unpublished. Limited companies since 1897 in *Statistical yearbook of Finland*.

Quarterly data since 1972 in *Statistical Report* RT. Statistics discontinued 1.1.1974.

Statistics of insurance companies

- Compiled by Ministry of Social Affairs, Department of Insurance.
- Contents Activity of insurance companies: final accounts and specifications by type of insurance.
- Information Annual statistics since 1958 in OSF XXII A *Insurance companies*. Earlier since 1893 *Vakuutusolot* (Insurance conditions). Data partly also in *Statistical Yearbook of Finland* and Finnish Insurance Society *Finnish Insurance Yearbook*.

TRANSPORT

Statistics of passenger traffic

- Compiled by CSO, Division of enterprise statistics.
- Contents Passenger traffic between Finland and foreign countries by mode of transport; passenger traffic between Finland and non-Nordic Countries by nationality and mode of transport.
- Information Monthly, quarterly and annual statistics in *Statistical Report LI*. Data also in *Bulletin of Statistics* and *Statistical yearbook of Finland* since 1924.

Statistics of long-distance lorry transport

- Compiled by CSO, Division of enterprise statistics.
- Contents Long-distance lorry transport on regular routes: terminals of departure and arrival, length of route, staff, volume of goods transported, number of journeys, stock, kilometres driven.
- Information Annual publication *Long-distance lorry transport* (earlier *Statistics of lorry transport performance, goods transport*) in *statistical report LI* since 1965. Data as duplicates from 1958 to 1964 in *Yearbook of Transport Statistics* since 1967.

Statistics of earnings and performance of private lorry drivers employed by Administration of Public Roads and Waterways

- Compiled by National Board of Public Roads and Waterways.
- Contents Transport performance and earnings of private lorry-drivers employed by TVL for road maintenance and construction.
- Information Annual duplicate since 1962 by National Board of public Roads and Waterways.

General Traffic Count

- Compiled by National Board of Public Roads and Waterways.
- Contents Average volume of traffic on public roads; traffic performance and distribution of traffic volume on public and local roads.
Statistical sample survey: few-hour traffic counts at c. 6000 counting points. Counts spread over seasons and weekdays; in 1934, 1939, 1950 and 1954; at five-year intervals since 1960.
- Information Results since 1965 in *General Traffic Count* by National Board of Public Roads and Waterways.

Statistics of motor vehicles

- Compiled by CSO, Division of enterprise statistics.
- Contents Number of automobiles, motor-cycles, tractors, motor driven work machines and trailers by commune at end of year, data for whole country by producing country, first registration year, capacity and most common makes. Registration of new vehicles by province monthly, also by make and model at end of year.
- Information Since 1969 annual publication *Motor vehicles* in *Statistical Report LI*. Registered new vehicles quarterly since 1970, monthly since 1971. Data since 1956 in *Bulletin of Statistics* and *Yearbook of Transport Statistics*. Registered new vehicles by make and model available as photocopies from machine tables.

Railway statistics

- Compiled by Finnish State Railways, Board of Administration.
- Contents Rail network of Finnish State Railways, stock, staff economy, transport performances and traffic accidents. Private railways.
- Information Annual publication *Railway statistics* since 1930 in OSF XX. Data 1871–1929 in *Rautatiehallituksen kertomuksia* (Annual report; OSF XX). Monthly data since 1919 in *Monthly Review of Finnish State Railways. Onnettomuus- ja vaurioilasto* (Statistics of accidents and damages) annually by traffic department. Data also in *Yearbook of Transport Statistics*, *Statistical yearbook of Finland* and *Bulletin of Statistics*.

Statistics of navigation

- Compiled by Board of Navigation, Statistical and Register Bureau.
- Contents Shipping between Finland and foreign countries, merchant fleet.
- Information Since 1903 in OSF I B, before since 1856 in OSF I. Annual publications *Navigation. Shipping between Finland and foreign countries* and *Navigation. Merchant fleet*, also monthly *Navigational statistics* (duplicate, since 1966). Also in *Yearbook of Transport Statistics* and *Bulletin of Statistics*.

Statistics of canals and channels

- Compiled by National Board of Public Roads and Waterways.
- Contents Canals and shipping channels, traffic.
- Information Annually *Public Roads and Waterways* (OSF XIX) since 1953. Older data in *Reports of the Administration of Roads and Waterways* (OSF XIX). Also in *Yearbook of Transport Statistics* and *Statistical yearbook of Finland*.

Statistics of civil aviation

- Compiled by National Board of Aviation.
- Contents Network of regular domestic air traffic, passenger and freight traffic of airports, number of aircraft landings at airports, performance of Finnish airlines, aviation licences, flying hours, air traffic accidents and damages.
- Information Annual NBA publications *National Board of Aviation Yearbook, Statistics of Finnish Civil Aviation and Lento-onnettomuustilasto* (Statistics of air traffic accidents and damages).
Data on airport constructions and maintenance in TVH annual publication *Road and Water Construction* (OSF XIX) until 1972.
Statistics also in *Yearbook of Transport Statistics* and *Bulletin of Statistics*.

Statistics of communications

- Compiled by Administration of Post and Telegraphy, Statistical Bureau.
- Contents Post, telephone, telegraph, radio services: network, means of communication, performance. Finances and personnel of Post and Telegraph Office.
- Information Annual publication *Post and Telegraph Office* (OSF XIII) since 1957. Earlier data in *Annual reports of the Administration of Post and Telegraphy* since 1887. Also in *Yearbook of Transport Statistics, Statistical yearbook of Finland* and *Bulletin of Statistics*.

GENERAL ECONOMIC CONDITIONS

National accounts

- Compiled by CSO, Division of national accounts.
- Contents Total description of economics: production, income from production, disposal of income, consumption, saving and gross domestic fixed capital formation, employment and transactions between Finland and foreign countries. Accounts chiefly at current prices: balance of resources and production by activities also at constant prices.

Information Annual publication *National accounts* (since 1968; data in each publication since 1964), three times a year *Preliminary data on statistics of national income* (since 1968) in *Statistical Report KT*. Data on domestic product, national income and balance of current payments; separate annual publication on balance of payments. Publications 1965–67 correspond to articles in *Bulletin of Statistics*, also including articles on balance of payments (since 1925), gross domestic product and volume index of production by industry (since 1976). National accounts 1948–1964 as revised in *Statistical Surveys* n:o 43.

Regional accounts

Compiled by CSO, Division of national accounts.

Contents Economic production, income from production, capital formation and employment by province.

Information Data on production, employment and gross domestic fixed capital formation by provinces 1960–1970 in *Statistical Surveys* n:o 53. Data 1973 in *Statistical Report KT* 1976:6.

Input-output studies

Compiled by CSO, Division of national accounts.

Contents Commodity flows between industries, commodity flows between Finland and foreign countries, use of commodities for various purposes, cost structure of industries.

Information Input-output study for Finland in 1956, 1959 and 1965 in *Bulletin of Statistics* 1960:10, *Statistical Surveys* 42, 1965 and *Statistical Report KT* 1969:3. Input-output studies 1970 under way.

Seasonally adjusted statistical series

Compiled by CSO, Division of national accounts since 1975; earlier Bank of Finland.

Contents Main economic time series seasonally adjusted for trend developments. Calendar fluctuations adjusted in some series. Method takes into account change in seasonal fluctuation. Series for adjustment both monthly and quarterly.

Information Data monthly since 1972 in *Bulletin of Statistics*. Earlier quarterly by Bank of Finland in *Economic Indicators for Finland*.

Statistics of the economy of communes, local federations and parishes

Compiled by	CSO, Division of financial statistics.
Contents	Revenue, expenditure, assets and liabilities of communes, local federations and Evangelic-Lutheran parishes annually according to balance-sheet. <i>Communal revenue and expenditure annually according to budget.</i>
Information	<p>Annual publication <i>Statistics of communal finances</i>, OSF XXXI.</p> <p>In present form since 1954. Older balance-sheet statistics: statistics of town finances 1910–1919, statistics of rural commune finances 1910-1912, 1925–1929 for towns only, since 1920 for alltypes of communes.</p> <p>Preliminary statistics on communal economy in <i>Statistical Report RT</i> since 1972.</p> <p>Statistics of communal budgets in <i>Statistical Report RT</i> since 1970. Earlier data in <i>Bulletin of Statistics</i> and <i>Statistical Report Fi</i> since 1968.</p> <p>Statistics of local federation economy in <i>Statistical Report RT</i> since 1971. Earlier data since 1959 in <i>Bulletin of Statistics</i> and <i>Statistical Report Fi</i> since 1967.</p> <p>Statistics of Evangelic-Lutheran parish economy since 1970 in <i>Statistical Report RT</i>. Earlier data since 1967 in <i>Statistical Report Fi</i>.</p>

LIVING CONDITIONS

Statistics of income and wealth (earlier statistics of income and property)

Compiled by	CSO, Division of price and income statistics
Contents	Distribution of income and wealth of natural persons and corporations as well as corporation-type enterprises, direct assessment of them by region and group of taxables.
Information	<p>Annual publication <i>Statistics of income and property</i> (OSF IV B) since 1920. Oldest taxation statistics from 1865, 1871. 1877 and 1881. Data on communal taxation regularly included since 1959, separate reports for 1924, 1927, 1932.</p> <p>Renamed <i>Statistics of income and wealth</i> in 1975.</p>

Statistics of wages and salaries

- Compiled by CSO, Division of price and income statistics.
- Contents Structure and development of contract and real wages, salaries and average income. Data on regular working hours, extra and overtime work obtainable from nearly all statistics.
- Information Statistics of hourly pay quarterly, monthly pay annually (for one month a year). Since 1968 in *Statistical Report PA*. In 1967 CSO wage statistics duplicates, mainly for 1966-67. Earlier statistics in *Social Review* and *Bulletin of Statistics*, wages and salaries of some important fields also in *Statistical yearbook of Finland*. Index series of income level and contract wages in summary publications of wage statistics. General income level index of wage-earners also in *Statistical Report KT* and *Bulletin of Statistics*.

Statistics of income security

- Compiled by National Board of Social Welfare, Planning and statistics Office.
- Contents Income transfers supervised by Board of Social Welfare for improvement of income security: child allowance, maternity benefit, maintenance advance, maintenance social assistance, military allowance, discharge benefit, qualities of beneficiaries and reasons for receiving benefits.
- Information *Statistical yearbook of Finland* and OSF XXI: *Yearbook of Social Welfare Statistics* and *Social Assistance*. Until 1975 also in *Social Review* and *Bulletin of Statistics*.

Household survey

- Compiled by CSO, Division of price and income statistics.
- Contents Data at five-year intervals on consumption expenditure and income of households. Sample survey comprising c. 8000 households. Basic data through monthly book-keepings, whole-year interviews, income data from registers. Research units both households and private persons. Survey 1976 under way.
- Information Household survey 1966 in *Statistical Surveys* n:o 51. Household survey 1971 in *Statistical Surveys* n:o 55. Survey 1976 results likely in 1978. Earlier surveys excepting first in series OSF XXXIII *Special Social Studies*.

Consumer price index

- Compiled by** CSO, Division of price and income statistics.
- Contents** Development of prices on private consumption goods and services. About 42 000 items of price data from c. 4000 shops in 90 localities.
- Information** Indexes since early 1920's. Reference periods: 1914:1-6, 1935, 1938:8-1939:9, 1951:10 (all named cost-of-living index), 1957:10-12 and 1967 (these named consumer price index).
Present reference year 1972. Monthly in *Index Report KH* and *Bulletin of Statistics*. Since 1976 also consumer price indexes by region and population group (1972=100).

Population census

- Compiled by** CSO, Division of population statistics.
- Contents** Most extensive data on population and housing. Data on all permanent residents in country: general demographic data, data by occupation, industry, education, income; housing conditions, household structure, dwelling and building stock. Data by commune, in 1960 and 1970 censuses even more detailed regional division.
- Information** Nationwide censuses 1950, 1960 and 1970, in OSF VI C 102, 103 and 104. Earlier reports on population size and structure on population register basis since 1749, since 1880 at ten-year intervals. Data in OSF VI.

Population census 1975

- Compiled by** CSO, Division of population statistics.
- Contents** Survey of housing and industry of total population 1975/76. More restricted than general population census. In principle same data but excluding other buildings than dwellings.
- Information** Preliminary data during 1977, final data in 1978.

Rent statistics

- Compiled by** SCO, Division of price and income statistics.
- Contents** Rent development of tenancy dwellings from previous year to February, May, August and November; rent level in November.

Information Until 1975 rent survey once a year in September, since 1975 rent data collected four times a year. Data on September rent level available for towns and urban communes since 1961, for rural communes since 1963. Data 1961–65 in *Social Review*. Since 1966 in *Statistical Report HI*.

Statistics of National Housing Board

Compiled by National Housing Board.

Contents Lending activities of National Housing Board since 1949.

Information *Statistical tables of the National Housing Board 1949–75* in 1976. Also more detailed annual data from compiler.

LABOUR FORCE AND LABOUR CONDITIONS

Labour force survey

Compiled by CSO, Division of labour statistics.

Contents Working population by type of activity, age, sex and region; labour force (employed, unemployed) by industry, occupation and industrial status; working days and hours of work completed.
Sample survey monthly including 18 000 persons.

Information Annually in OSF XL, quarterly and monthly in *Statistical Report TY*. Results 1959–69: *Statistical Surveys 48*, corrected results 1965–69 in *Statistical Report TY 1976:3*.

Labour projections

Compiled by CSO, Division of labour statistics.

Contents Short term projections: total labour force, employment and unemployment in whole country.
Long term projections: labour force supply by age group and sex in whole country and by region.

Information *Statistical Report TY*.

Statistics of labour disputes

Compiled by	CSO, Division of labour statistics.
Contents	Number of labour disputes, workers participating and working hours idle. Data from employers and employees.
Information	Preliminary data in <i>Bulletin of Statistics</i> (since 1924). Monthly, quarterly and annual data in <i>Statistical Report TY</i> (since 1971). Data 1890–1906 in booklet <i>Suomen Teollisuushallituksen tiedonantoja</i> n:o 38, 1918–1966 in <i>Social Review</i> , 1967–1970 <i>Statistical Report PA</i> . Labour dispute data since 1909 also in <i>Statistical yearbook of Finland</i> .

Statistics of employment service

Compiled by	Ministry of Labour, Statistical Office.
Contents	Monthly: notifications to employment service of vacancies, unemployed seeking work by district and occupational group. Quarterly: unemployed seeking work by age-group, occupational group and duration of unemployment. Also total number of persons seeking work, vacancies and posts supplied quarterly, annually.
Information	Annual publication <i>Valtioneuvoston kertomus eduskunnalle toimenpiteistä työllisyylain soveltamisessa</i> (Council of State report to Parliament on the application of the Employment Act) since 1961, quarterly <i>Labour Reports</i> since 1961, monthly <i>Työllisyyskatsaus</i> (Employment Review) and <i>Työvoimaministeriön tilastoja</i> (Employment service statistics from the Ministry of Labour) since 1972. Monthly data on statistics from the Ministry of Labour) since 1972. Monthly data on statistics of labour force in <i>Bulletin of Statistics</i> also.

Statistics of employment promoting training

Compiled by	Ministry of Labour, Statistical Office.
Contents	Demand for vocational training arranged by employment authorities, number of new and leaving trainees, trainees completing and breaking off training, placement of trainees on labour market, occupational and regional mobility in connection with training.

Information Annual publications *Valtioneuvoston kertomus eduskunnalle toimenpiteistä työllisyyslain soveltamisessa* (Council of State report to Parliament on the application of the Employment Act) since 1965 and *Työllisyyskoulutus 1975* (Vocational training arranged by employment authorities), quarterly *Työvoimakatsaus* (Employment Review) since 1971, monthly *Työvoimaministeriön tilastoja* (Employment service statistics from the Ministry of Labour) since 1975.

Statistics of persons employed in public works

Compiled by Ministry of Labour, Statistical Office.

Contents Number of persons employed in public works paid from work appropriations contained in state, municipal and local federation works projects.

Information Annual publication *Valtioneuvoston kertomus eduskunnalle toimenpiteistä työllisyyslain soveltamisessa* (Council of State report to Parliament on the application of the Employment Act) since 1957, quarterly *Labour Reports* since 1963, monthly *Työvoimaministeriön tilastoja* (Employment service statistics from the Ministry of Labour) since 1972.

Statistics of National Board of Labour Protection inspections

Compiled by National Board of Labour Protection.

Contents Labour force inspected, inspections by industry, deficiencies found in observance of laws on labour protection by law and industry.

Information Until foundation of National Board of Labour Protection statistics in annual labour inspection report. Since 1974 as statistical reports of the Board.

HEALTH

Statistics of health standard of population

Compiled by National Board of Health.

Contents Data on control of living environment presumed by Public Health Act, diseases and illnesses, incidence and prevalence.
Limitations on social participation in statistics of medical treatment days.

Information Annual publication *Public Health and Medical Care* (OSF XI) since 1955. National Board of Health registers, e.g. Register of Discharged Patients since 1960. Older data in *Yearly reports of the National Board of Health* since 1884.

Statistics of preventive health care system

Compiled by National Board of Health.

Contents Prevention of diseases, chief institutions; inoculation, health centres incl. maternity and child guidance, school health care.

Information Annual publication *Public Health and Medical Care* (OSF XI) since 1955. Reports on primary health services since 1973. Older data in *Yearly reports of the National Board of Health* since 1884.

Statistics of medical services

Compiled by National Board of Health.

Contents Basic and special treatment, rehabilitation. Data on hospitals, research institutes, forensic actions, activity of pharmaceutical institution, health personnel, persons wanting treatment, treated, treatment, limitations of social participation caused by illnesses.

Information Annual publication *Public Health and Medical Care* (OSF XI) since 1955. Separate National Board of Health registers: Central Register of Health Personnel, register of Discharged Patients. Older data in *Yearly report of the National Board of Health* since 1884.

Statistics of causes of death

Compiled by CSO, Division of population statistics.

Contents Primary causes of death immediately provoking series of maladies with fatal issue, conditions of accident or violence causing fatal injury.

Information In *Population statistics* OSF VI 1936–40. Since 1941 in *Causes of death* OSF VI B.

Statistics of industrial accidents

Compiled by	National Board of Labour Protection, Training and Information Bureau.
Contents	Industrial accidents leading to three-day disability for work, occupational diseases by cause, type of accident, occupation, industry and injured part of body.
Information	Annual publication <i>Statistics of industrial accidents</i> (OSF XXVI) since 1898.

Statistics of financing and resources of health services

Compiled by	National Board of Health.
Contents	Data on running costs and returns, capital expenditure and financing of hospitals, running costs and returns of dispensaries, average running costs of central sanatoria of tuberculosis and mental hospitals, turnover of pharmacies, state contributions to expenditure of services.
Information	Annually <i>Public Health and Medical Care</i> (OS F XI) since 1955. Older data since 1884 in <i>Lääkintöhallituksen kertomuksia</i> (Annual reports of National Board of Health). Statistics also in other National Board of Health publications and <i>Statistical yearbook of Finland</i> .

SOCIAL SERVICES

Statistics of social services

Compiled by	National Board of Social Welfare, Planning and Statistics Office.
Contents	General social services; <i>Home help</i> : data on structure, socio-economic status, reason for home help, number of houseworker visits of households receiving help. <i>Children's day care</i> : number of different types of places and children per year. <i>Child guidance centres</i> : age structure, reason for guidance, number of various measures and sosio-economic background of children under treatment and observation.

Institutional and open care services for special groups:

Supervision of illegitimate children: chiefly measures of organization of child maintenance.

Child welfare, welfare for abusers of intoxicants, vagrants and the disabled: data on age and family structure of various groups of clients, reasons for need of help, measures.

Special groups in institutional care: data on administration, economy and staff of institutions.

Various open care services for the aged: number of patients by commune, housing provided for the aged. Data on home help for the aged from statistics of home help.

Information *Statistical yearbook of Finland* and OSF XXI including 3 publications: *Yearbook of Social Welfare Statistics* with data on total social welfare by province, also as time series. Separately *Social Assistance* and *Home Help* also by commune. Statistics also in *Bulletin of Statistics*, until 1975 also in *Social Review*.

Statistics of personnel for social welfare

Compiled by National Board of Social Welfare, Planning and Statistics Office.

Contents Annually size of personnel of communal social offices, government, communal and private institutions and other service points; structure of tasks. At five-year intervals more detailed inquiry into basic, complementary and continued training of personnel; length of employment period.

Information Statistics in OSF XXI publications *Yearbook of Social Welfare Statistics* (since 1957) and *Home Help* (since 1971). Until 1975 also in *Social Review*. Since 1976 in *Bulletin of Statistics*; special inquiry in separate publication.

Statistics of social costs

Compiled by Ministry of Social Affairs and Health.

Contents Data on social activities financed by Government, municipal employers and parties insured by purpose of allocation.
Chief purposes: illness and health, industrial accidents, unemployment, old age and disability for work, family and children, general assistance,

disabled soldiers and families of killed in war, tax deductions for children, interest subsidies for housing loans.

Information *Social Review* 1949–1975, also *Statistical yearbook of Finland*.

Statistics of expenditure on communal social affairs

Compiled by National Board of Social Welfare, Planning and Statistics Office.

Contents Annual running costs and revenue for communal social affairs by activity and type, breakdown of financing.

Information Annually *Yearbook of Social Welfare Statistics* (OSF XXI) since 1957. Earlier in same OSF series (under different names) since 1881. Also in *Statistical yearbook of Finland*. Data until 1975 also in *Social Review* and *Bulletin of Statistics*.

Statistics of institutional economy

Compiled by National Board of Social Welfare, Planning and Statistics Office.

Contents Breakdown of running costs and revenue of state or communal institutions and private institutions subsidized by state or commune, number of places, patient days and personnel.

Information Annually *Yearbook of Social Welfare Statistics* (OSF XXI) since 1957. Until 1975 also in *Social Review*, *Bulletin of Statistics*.

EDUCATION, RESEARCH

Statistics of institutions for general education

Compiled by CSO, Division of education statistics.

Contents Comprehensive, primary and secondary schools, people's high schools, civic schools, workers' evening schools, pupils, teachers and examinations passed.

Contents vary by group of educational institution.

- Information** Since academic year 1973/74 series OSF X *Institutions for general education*. Earlier two separate publications: *Primary school education* (OSF X since 1883) and *Secondary school education* (OSF IX since 1884).
Preliminary-type data on secondary and comprehensive schools in *Statistical Report KO*. Data on comprehensive, primary and secondary schools, people's high schools, civic and workers' evening schools in *Statistical yearbook of Finland*.

Statistics of institutions of vocational education

- Compiled by** CSO, Division of education statistics.
- Contents** Applicants and admitted to institutions for vocational education, number of students, examinations passed by level and field of education, sex, type of educational institution, area of location and owner.
- Information** Annually in *Statistical Report KO*. Since 1884 data on vocational education in *Statistical yearbook of Finland*.

Statistics of university education

- Compiled by** CSO, Division of education statistics.
- Contents** University students, teachers and graduates.
- Information** Annual publication *Higher education* (OSF XXXVII) since academic year 1966/67.
Preliminary-type data annually in *Statistical Report KO*. Data on university education also in *Statistical yearbook of Finland* since 1879.

Statistics of educational structure of population

- Compiled by** CSO, Division of education statistics.
- Contents** Educational structure of population, annual changes. Completed school and university education. Annual statistics on educational structure and changes based on Register of Completed Education and Degrees by age, sex and region of residence.
- Information** Data on annual educational structure of population since 1972 in *Statistical Report KO*.

Statistics of research and development

- Compiled by CSO, Division of educational statistics.
- Contents Size of research and development staff, man-years completed, expenditure and financing of research and development.
- Information OSF XXXVIII since 1971, preliminary data in *Statistical Report KO*.

JUSTICE, ELECTIONS

Criminal statistics

- Compiled by CSO, Division of population statistics.
- Contents Number of crimes known to police or otherwise discovered, criminal cases tried in courts of First Instance, criminal inquiries, sentences.
- Information Data since 1927 in OSF. Annually *Criminality known to the police* (OSF XXIII A) and *Criminal cases tried by the courts* (OSF XXIII B), quarterly *Statistical Report OI* on number of crimes.

Statistics of road traffic accidents

- Compiled by CSO, Division of enterprise statistics
- Contents Traffic accidents in streets, roads and other public places known to and reported by the police.
Circumstances, parties involved and victims of traffic accidents.
- Information Statistics 1931–65 in *Social Review*, since 1968 in *Statistical report LI*, 1966–67 in separate duplicates.

Statistics of function of courts

- Compiled by CSO, Division of population statistics.
- Contents Total activity of courts, cases dealt with, conclusions, time spent in proceedings.
- Information Annually *Function of Courts* (OSF XXIII C) since 1945. Data in OSF XXIII, *Justice and Crime* since 1892.

Statistics of execution (of court decisions)

- Compiled by** CSO, Division of population statistics.
- Contents** Performance of penitentiaries: number of prisoners by type, sex, age group, term of imprisonment and grounds for acquittal; cases cleared by chief executive authority by type and number.
- Information** Annually *Statistical Report OI* since 1967. Older data until 1937 OSF XXIII, *Criminality III, Persons serving sentences*. Not published in 1937–67. Data on activity of chief executive authority partly in OSF XXIII C, *Function of Courts*.

Statistics of crime damages

- Compiled by** CSO, Division of population statistics.
- Contents** Data on victims of crimes and damages. Victims: age, sex, social status, employed/unemployed, affected/not affected by alcohol. Type and duration of injury caused to victim.
Type and value in marks of damage caused.
- Information** Results in *Statistical Report OI 1976:4*.

Statistics of elections

- Compiled by** CSO, Division of population statistics.
- Contents** Election of presidential electors, general elections, municipal elections and consultative popular votes: number of persons entitled to vote and voters, candidates, votes and elected by party.
- Information** Available for total period of independence (1917–). Data on elections of presidential electors and general elections in OSF XXIX A, municipal elections in XXIX B, consultative popular votes in XXIX C. Municipal elections 1930–60 only in *Statistical yearbook of Finland* and *Bulletin of Statistics*.

ENVIRONMENT

Statistics of sea water

- Compiled by Institute of Marine Research.
- Contents Temperature, salt content, level, ice conditions, chemical qualities of sea water, plankton, marine bottom fauna.
- Information Since 1913 in *Publication of the Institute of Marine Research*.

Statistics of water supply and sewer systems

- Compiled by National Board of Waters, Office for Water Supply and Sewer Systems of General Planning Division.
- Contents Annual data on water works and sewer systems serving at least 200 persons. Dimensions, equipment, costs and treatment of drinking and waste waters. Also information on pollution load of waste waters before and after treatment.
- Information Results of inquiries in *Reports of the National Board of Waters*.

Hydrological statistics

- Compiled by National Board of Waters, Hydrological Office of Water Research Institute.
- Contents Data on areal values of precipitation, evaporation, run-off, water quantity, water levels, ground water levels, ice thickness, snow cover, water surface temperature, soil frost etc. in Finland.
- Information *Hydrological Yearbook* since 1910 and *Monthly Hydrological Report* since 1959. Various statistics also in *Communications of the Hydrological Office* and *Publications of the Water Research Institute*.

Water statistics of industry

- Compiled by** National Board of Waters, Office for Water Pollution Control and Recreational Use of Waters of General Planning Division.
- Contents** Data on industrial raw water supply, treatment costs and use of water for various purposes. Information on quantity, quality and treatment costs of industrial effluents and discharge situation of industry.
- Information** Summarized data in *Reports of the National Board of Waters*. First data from 1972.

Water quality register

- Compiled by** National Board of Waters, Water Research Office of Water Research Institute.
- Contents** Quality of Finnish waters, quality changes and interrelation of changes.
- Information** Publications in *Reports of the Water Pollution Control Office 1962–70*, volumes in *Reports of the National Board of Waters 1971–74*, scientific summaries in *Publications of the Water Research Institute*.

Statistics of climatology and geomagnetism

- Compiled by** Finnish Meteorological Institute.
- Contents** Air temperature and humidity, air pressure, precipitation, depth of snow, wind, amount of cloud, radiation, general weather conditions, soil temperature, radioactivity of air and rainwater · geomagnetism, electricity of air etc. Basic data from observations at c. 160 weather stations, c. 500 rainfall stations and some special stations. Since 1959 central results on magnetic tapes.
- Information** *Meteorological Yearbook of Finland* (4 volumes), *Kuukausikatsaus Suomen ilmastoon* (Monthly bulletin of Finnish climate), yearbooks *Magnetic Results from Nurmijärvi Geophysical Observatory* and *Observations of Radioactivity*. Restricted weather and climate statistics also in yearbooks of CSO, some towns and other corporations.

Statistics of air pollution

- Compiled by** Finnish Meteorological Institute.
- Contents** Two-type statistics:
A: Data from 11 stations on most common air and rainwater pollution components. Material on surveys in built-up areas and industry.
B: Meteorological Institute: several models for describing pollution transport in atmosphere as local, regional and remote transport phenomena.
- Information** Since early 1975 results from three stations in institute monthly review. Data materials recorded since 1972. OECD and WMO network results in publications series of organizations.

Radiation statistics

- Compiled by** Institute of Radiation Protection.
- Contents** Assessment of radiation dose to man: radiation dose to persons exposed in their work, radioactivity in man, environmental background radiation, radioactivity of air, water and food.
- Information** Institute report series (SFL-A REPORT) since 1966. Also compiled reports and analyses separately.

