

National metadata repository Melinda

Minna Olkinuora-Tauru
12th, September 2017

What is Melinda



Melinda services for you

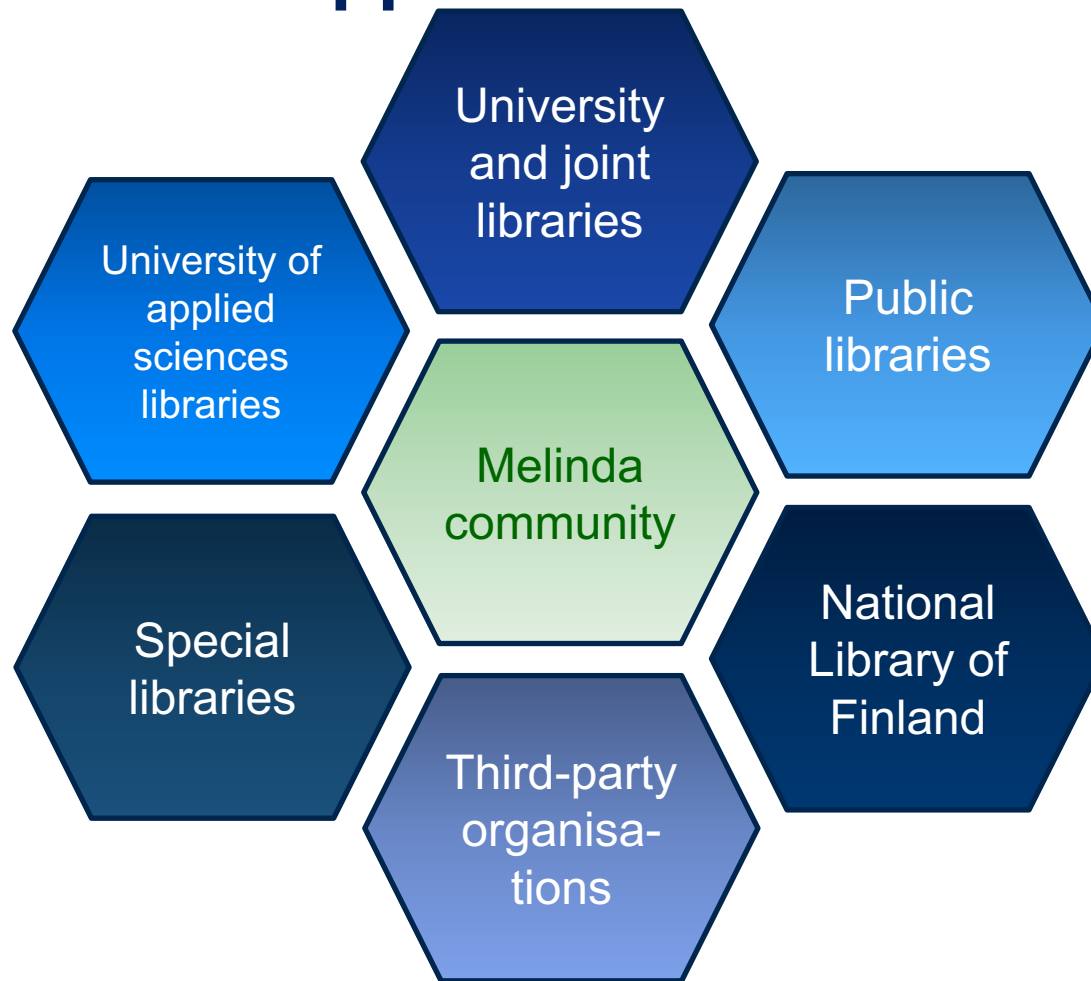
Benefits of using Melinda



National metadata repository Melinda

- Shared metadata repository service for Finnish libraries
 - Collects all bibliographic metadata of library collections in one database
 - Online database that can be used anywhere
 - Connects Finnish libraries into a national metadata production environment
 - Libraries catalogue materials into a shared database
 - Network based approach to working together
- Growing and developing the service:
 - National metadata repository initiative 2008–2020

National metadata repository Melinda Network based approach



National metadata repository Melinda – Aims

More efficient
description process

**Shared metadata
repository for Finnish
libraries**

New work environment for
metadata production

Each item or publication is
described only once in Finland

Number of conflicting description
practices will decrease

National metadata repository Melinda

Melinda at the moment:

- Over 40 libraries and library consortia
- Over 1,000 library professionals adding metadata
- Over 10 million bibliographic records
- Over 3 million queries per year at <http://melinda.kansalliskirjasto.fi>
- Print monographs, serials, electronic publications, theses, music, video games, audio books, films, etc.



National metadata repository's growth so far

- Background: from union catalogue Linda (1993–2012) to Melinda in 2013
 - All university libraries, together with a few joint libraries and special libraries
- Gradually moving into other library sectors
 - Libraries in most universities of applied sciences joined in 2012–2014
 - Public libraries 2015–
 - Pilots: Tampere (PIKI), Kokkola (Anders)
 - Turku (Vaski) 2016, and Kuopio city library 2017–
 - Koha library system's integration to Melinda 2017–

National metadata repository Melinda

- Melinda's operating model is system independent
 - Aims and tasks remain constant regardless of back-end system
 - Before: VTLS, Voyager
 - Current: Aleph
 - Back-end system renewal in progress under strategy period 2017–2020
 - Enabling open linked metadata

National metadata repository Melinda

Aims for 2017–2020 strategy period

- **Final goal in 2020:**
 - Melinda is a production environment for high quality descriptive metadata, which enables the production of interoperable linked metadata.
- **Aims:**
 - Melinda's operation model will be developed further to fulfil future requirements.
 - Melinda's back-end system will be renewed with a solution that enables a gradual change into open linked metadata.
 - Further development and expansion of the metadata production environment will be carried out in cooperation with Finnish metadata producers (libraries, publishers, and other metadata providers).
 - Melinda's integration by national and international service providers will develop further.

What is Melinda



Melinda services for you

Benefits of using Melinda



National metadata repository Melinda

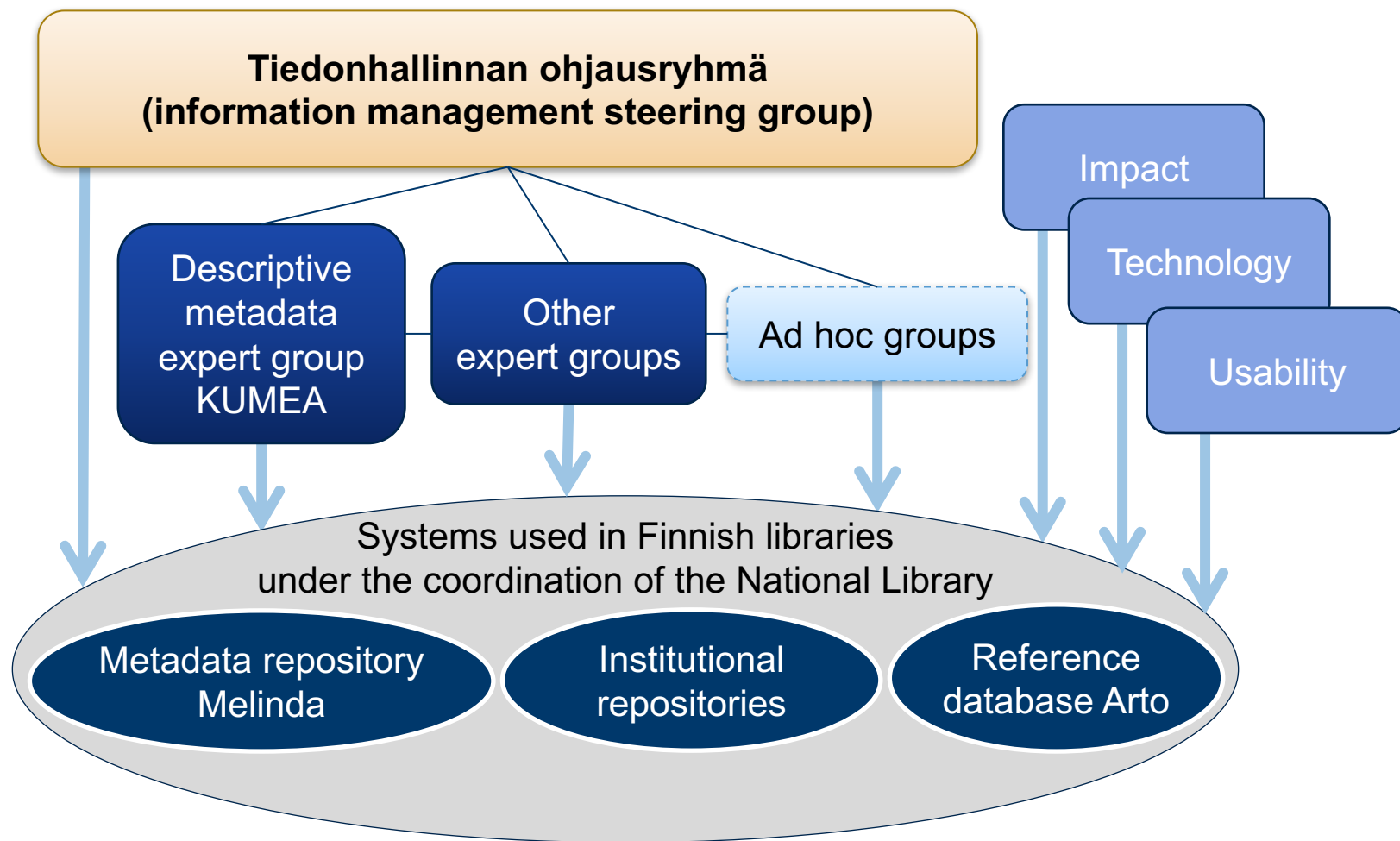
Many ways of cooperation

Melinda's steering group

Developing Melinda

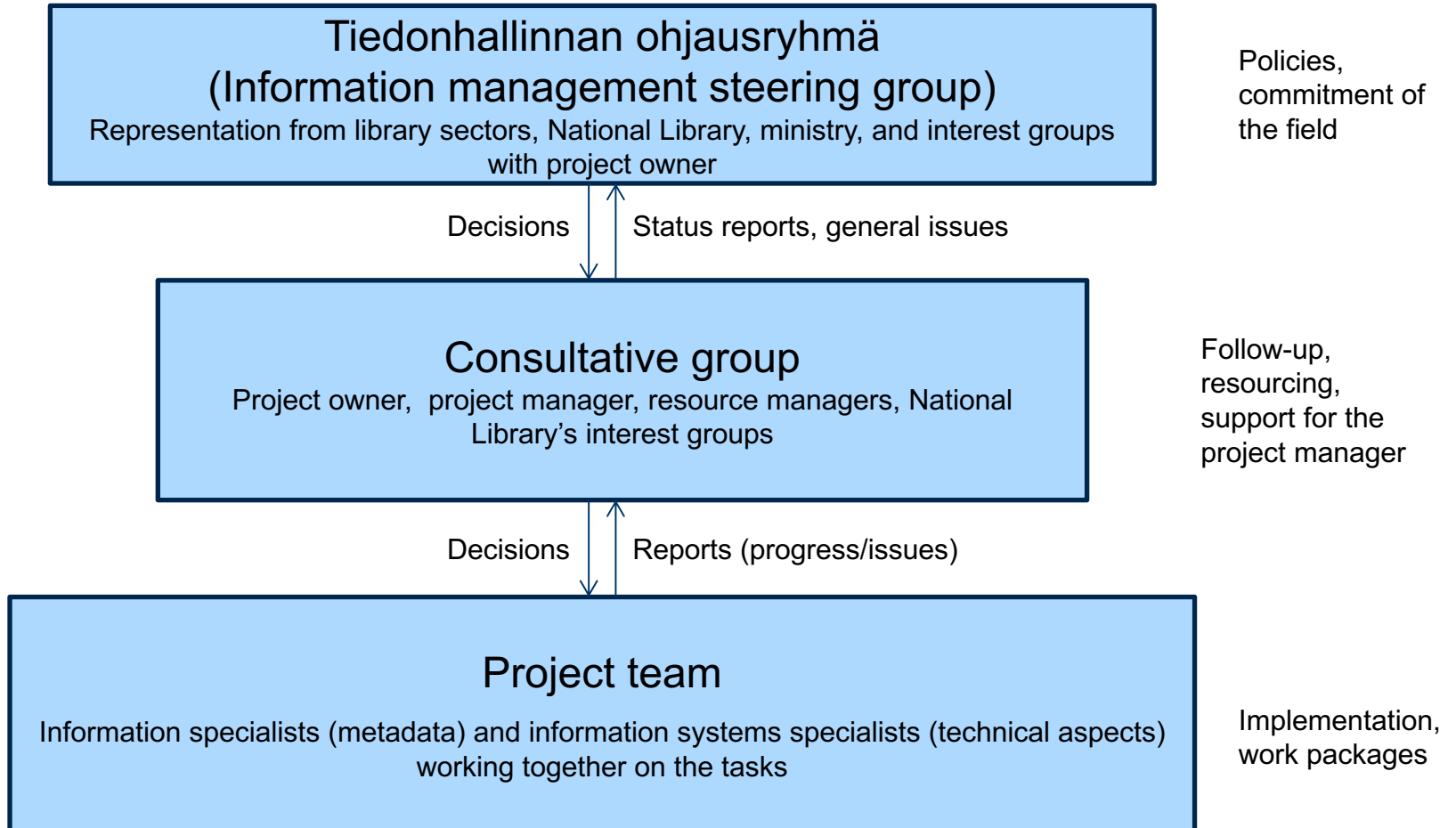
Working in Melinda

Melinda is steered together



National metadata repository Melinda

Governance and organisation of the initiative



National metadata repository Melinda

Aims of the work package model

- Clarifying the structure of the initiative
 - Recognising and defining projects associated with the initiative
 - Minimising overlap in completing tasks
 - Dividing work into tasks that are manageable, viable, and easy to keep track of
- Ensuring transparency and more effective completion of the tasks





National metadata repository Melinda

Matrix type work package structure

1. Shared support work packages: work packages that continue through the project and offer support for all the other work packages. Typically shared tasks and development of mutual processes.
 2. Separate development and implementation work packages: work packages for the development and implementation of certain fixed-term tasks, which can be compared to subprojects.
- Each work package has a person responsible for its completion and other appointed resources. All tasks to do with the topic are included under a work package and divided into manageable units.

National metadata repository Melinda

Entry models

	“Small”	“Medium”	“Large” (previously the standard mode)
Entry model:	Only entering new metadata records into Melinda; records in local database not loaded	Entering with limited collection of metadata records; metadata records without component parts or easily definable collections from local database loaded into Melinda	Entering with extensive metadata collections; all of local database loaded into Melinda
Option:			 Recommended
Moving from one model to another			 

What is Melinda



Melinda services for you

Benefits of using Melinda





National metadata repository further improvements 2012–2020

National metadata repository

Possibilities and expectations in 2012

Uniformity, Communality

Common rules and practices for everyone. I can expect to get help if I ever need it.

Efficiency

Finishing tasks faster. No need to repeat records. Same effort can be directed into other tasks. Results in cost savings.

Visibility

Library collections receive national visibility. Number of inter-library loans will increase.

Quality

Less likely to have inaccurate metadata. Data quality improves and I can use national authority files.

National metadata repository Melinda

Benefits 2020

Integration	Integration through existing national and international APIs, thereby cutting costs.
Interoperability	Technical interoperability and semantic uniformity improves the quality and usability of the stored metadata.
Efficiency	Amount of overlapping work decreases when metadata producers can use each others input and existing indices.
Open Access	Open access enables reuse and creates new opportunities to apply the metadata even for third-party organisations outside the library community.
Interactivity	Networking and knowledge sharing within the Finnish metadata community.

Thank you!

Melinda wikipage (in Finnish):
<https://www.kivi.fi/display/Melinda>

Email:
melinda-posti@helsinki.fi