

Kopio on astaud.

Preludium Violancellolle (Tahi Viululle)
ja Pianolle.

Preludium för Violan cell (eller Violini)
och Piano.

J. Aino Raitio.
Op. 3 ~~16~~.

Maisteri ottanut mukaan 30/IV 1917

163

Förteckning 163.
Largo maestoso.

~~H. M. B. P. P. P.~~
Prelude.

Jaino Raitio
Op. 3

Molto espressivo e tranquillo.

pesante. mp. ms. cresc. cantabile

cresc. poco a poco

dim.

mp. dolce

tranzuillo

tranzuillo

This system contains a vocal line and a piano accompaniment. The vocal line starts with a five-fingered scale (5) and includes a triplet. The piano accompaniment features chords and arpeggiated figures. Dynamic markings include *dim.*, *mp. dolce*, and *tranzuillo*. There are also some handwritten annotations like a question mark and a plus sign.

Lo stesso tempo

Lo stesso tempo

leggiero

p.

Ped.

Ped.

This system continues the piece with a vocal line and piano accompaniment. It features a large fermata over the piano part. The tempo is marked *Lo stesso tempo* and *leggiero*. The piano part includes a *p.* (piano) dynamic marking and a *Ped.* (pedal) marking. The score includes various musical notations such as notes, rests, and slurs.

Handwritten musical score for the first system. It consists of a vocal line at the top and a piano accompaniment below. The piano part features complex textures with many beamed notes and slurs. A large slur spans across the piano accompaniment. The key signature has two flats and the time signature is 3/4.

appassionato

Handwritten musical score for the second system, marked *appassionato*. It features a vocal line and piano accompaniment. The piano part has a more rhythmic and textured feel with many beamed notes. A large slur is present. The key signature has two flats and the time signature is 3/4.

cresc. poco a poco

Handwritten musical score for the third system, marked *cresc. poco a poco*. It features a vocal line and piano accompaniment. The piano part has a more rhythmic and textured feel with many beamed notes. A large slur is present. The key signature has two flats and the time signature is 3/4. A '3' is written above the vocal line.

Handwritten musical score for the fourth system. It features a vocal line and piano accompaniment. The piano part has a more rhythmic and textured feel with many beamed notes. A large slur is present. The key signature has two flats and the time signature is 3/4.

This is a handwritten musical score for piano and voice, consisting of three systems of staves. The notation includes treble and bass clefs, a key signature of two flats (B-flat and E-flat), and a 3/4 time signature. The score is characterized by dense piano accompaniment with many beamed notes and rests, and a vocal line with long, sweeping phrases. Performance markings include *affettuoso* and *espressivo*. There are also dynamic markings such as *dim.* and *otto*. Numerical markings like '3' and '5' are placed above notes, likely indicating triplets or fingerings. The manuscript shows signs of being a working draft, with some ink bleed-through and corrections.

SS *affettuoso*

espressivo *dim.*

otto

Handwritten musical score for the first system. The top staff is a vocal line in treble clef with a key signature of two flats and a 4/4 time signature. The bottom two staves are a piano accompaniment in grand staff. The piano part begins with a *mp.* (mezzo-piano) dynamic marking and includes a *legato* instruction. The music consists of several measures with various note values and rests.

Handwritten musical score for the second system. The top staff is a vocal line. The piano accompaniment includes a *dolce* (sweet) marking in the upper register and a *dim.* (diminuendo) marking in the lower register. There are also *mp.* markings. The piano part features triplet markings (indicated by a '3' over the notes) and various articulation marks like '+' and 'x'.

Handwritten musical score for the third system. The piano accompaniment is characterized by sixteenth-note patterns in the right hand, often beamed together. The left hand provides a steady accompaniment. The system includes various dynamic markings and articulation symbols.

Handwritten musical score for the fourth system. The piano accompaniment continues with sixteenth-note patterns and includes a *ppp* (pianissimo) dynamic marking. The system concludes with a final cadence in the piano part.

Handwritten musical score for the first system, featuring a piano and flute. The piano part includes the instruction *espressivo* and *cresc.* (crescendo). The flute part has a dynamic marking of *mf*. The system concludes with a double bar line and a fermata.

Handwritten musical score for the second system, featuring a piano and flute. The piano part includes the instruction *mp. dolce* (mezzo-piano, dolce). The system concludes with a double bar line and a fermata.

Handwritten musical score for the third system, featuring a piano and flute. The piano part includes the instruction *p. legatissimo* (piano, legatissimo). The system concludes with a double bar line and a fermata.

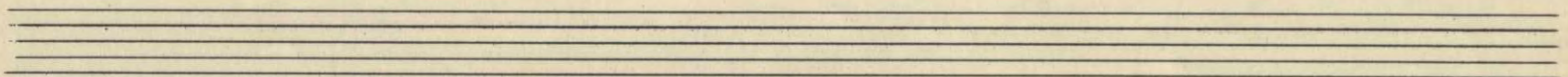
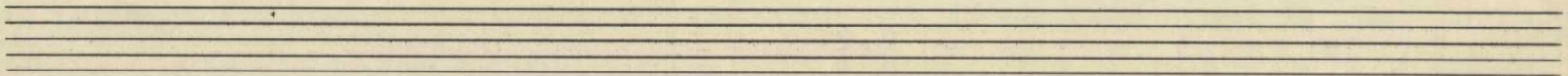
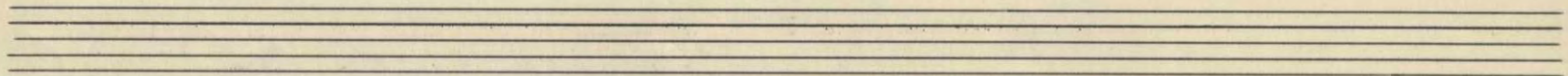
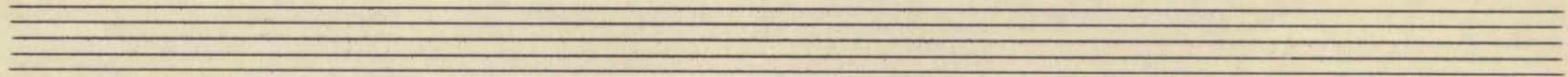
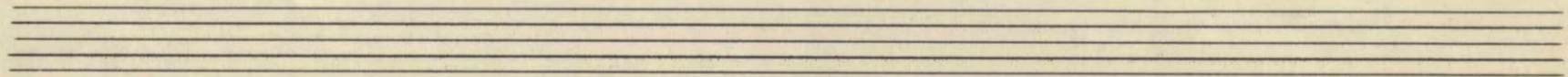
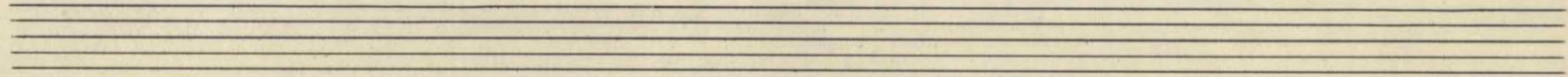
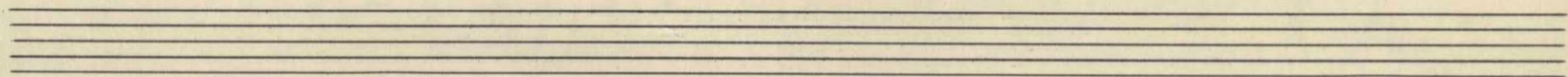
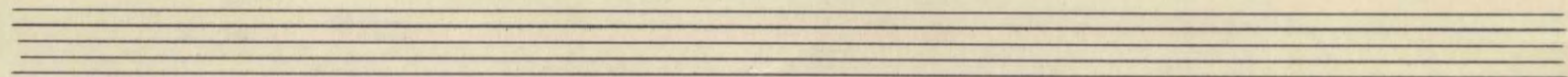
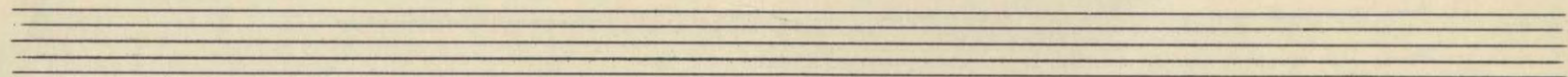
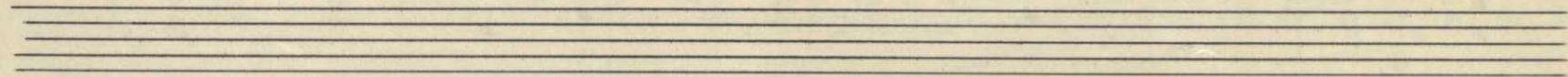
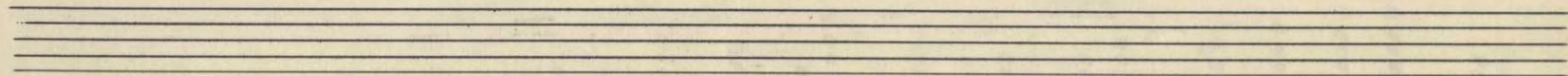
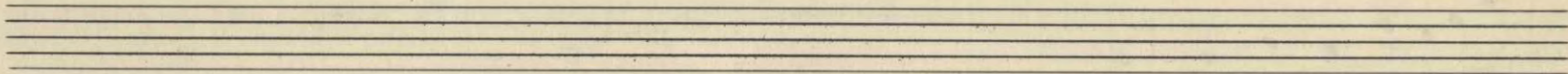
Handwritten musical score for the fourth system, featuring a piano and flute. The piano part includes the instruction *cresc. poco a poco* (crescendo, poco a poco). The system concludes with a double bar line and a fermata.

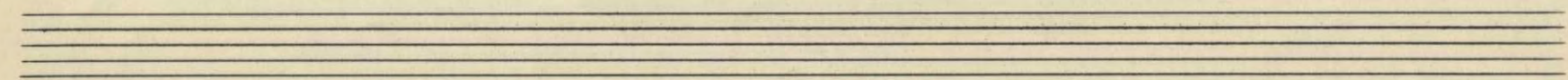
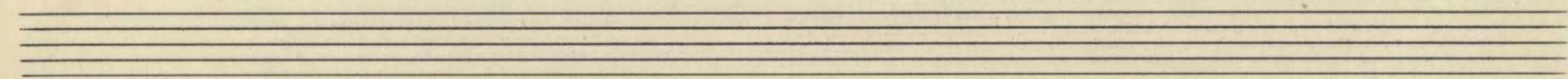
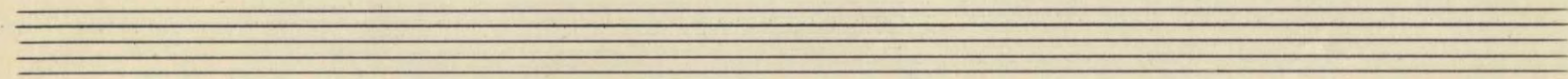
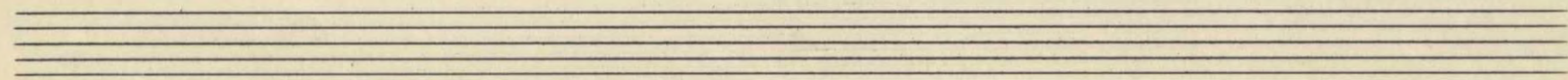
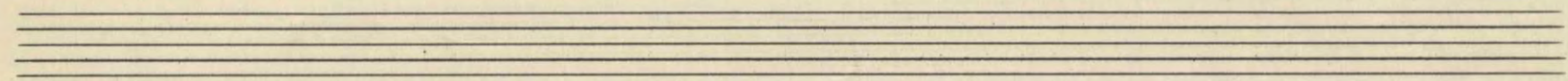
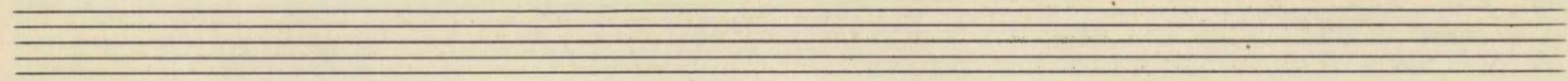
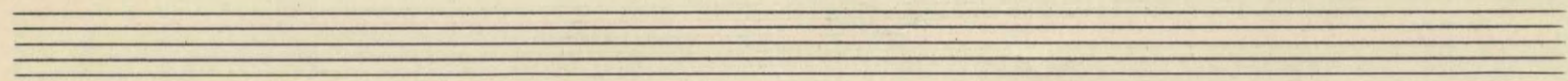
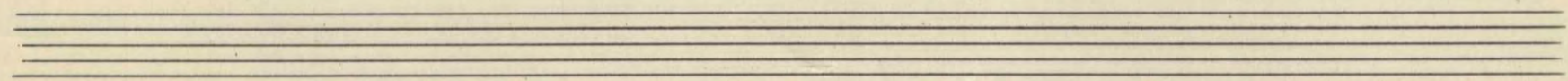
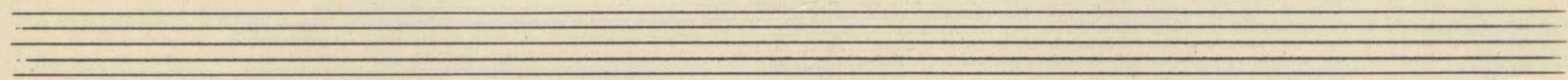
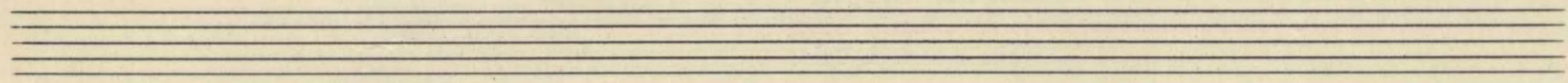
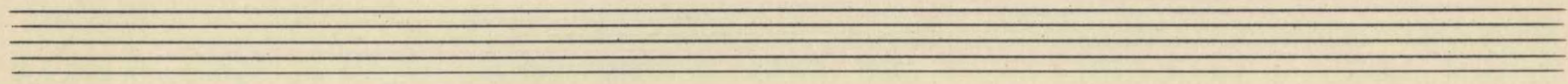
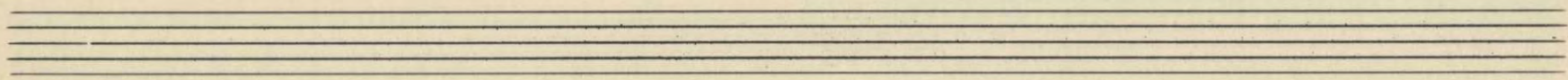
Handwritten musical score for the first system. It consists of a vocal line on a single staff and a piano accompaniment on two staves. The key signature is one sharp (F#) and the time signature is 3/4. The vocal line begins with a triplet of eighth notes. The piano accompaniment features a complex texture with many beamed notes and slurs. A large slur covers the first two measures of the piano part. The system concludes with a double bar line.

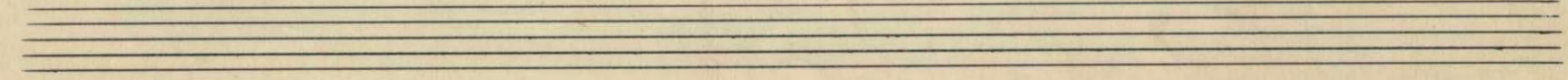
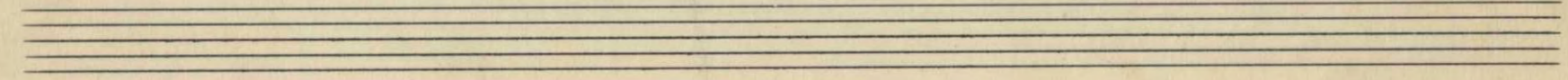
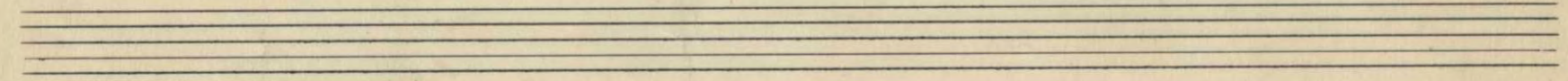
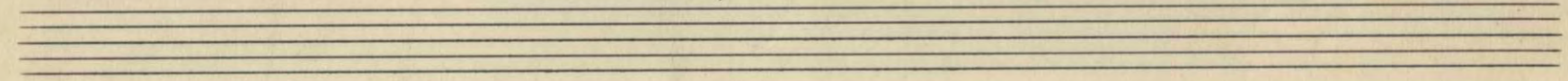
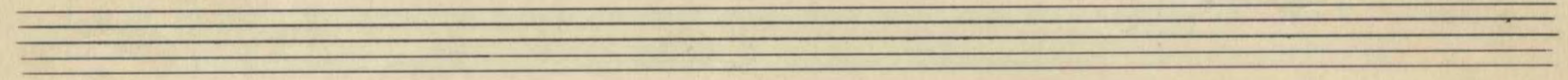
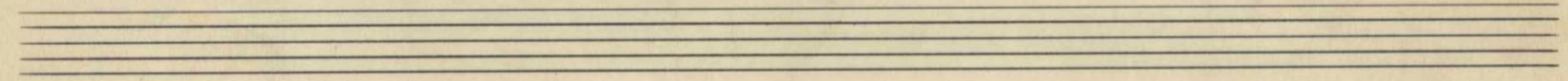
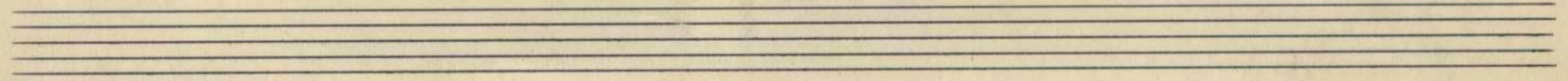
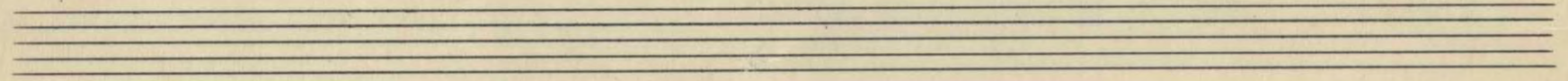
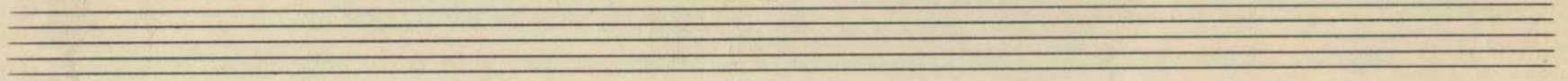
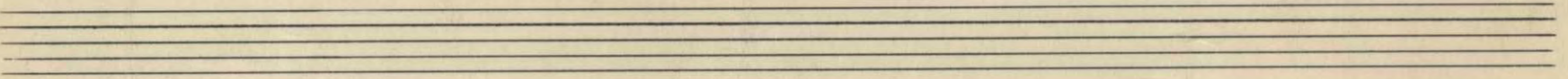
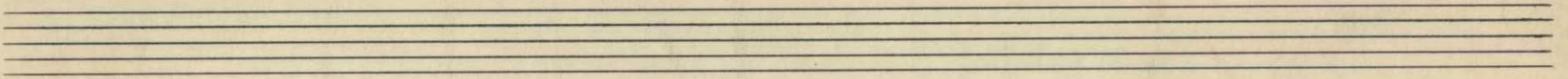
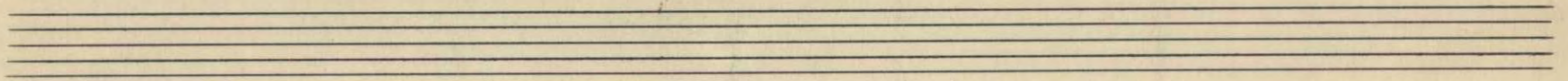
Handwritten musical score for the second system. It continues with a vocal line and piano accompaniment. The key signature remains one sharp. The system includes dynamic markings: *mp.* (mezzo-piano) above the vocal line, *dim.* (diminuendo) above the piano part, and *espr.* (espressivo) below the piano part. There are several triplet markings over the piano accompaniment. A change in time signature to 3/4 occurs in the middle of the system. The system ends with a double bar line.

Handwritten musical score for piano and violin. The score is written on two staves. The top staff is for the violin, and the bottom staff is for the piano. The piano part is written in a grand staff format, with the right hand on the upper staff and the left hand on the lower staff. The music is in a key signature of two flats (B-flat and E-flat) and a 3/4 time signature. The score begins with a treble clef and a key signature of two flats. The first measure of the violin part has a '3' above it, indicating a triplet. The piano part starts with a 'mp.' (mezzo-piano) dynamic marking. The score continues with several measures of music, including a long melodic line in the violin part and a complex accompaniment in the piano part. The piano part features many chords and arpeggiated figures. The score ends with a final measure in both parts, marked with a 'p.' (piano) dynamic. There are some handwritten annotations and corrections throughout the score, including a 'p.' marking in the piano part and a 'p.' marking in the violin part. The paper is aged and shows some staining.

Eight sets of empty musical staves, each consisting of five lines, arranged vertically on the page. These staves are blank and contain no musical notation.







Prelude

J. Aino Raitio
Op. 24 b.

Largo maestoso.

Här måste 3 tacter, från pianostämman
inteknas

molto tranquillo e cantabile

1 1 2 *Piano* *ms* *II*

crescendo *I* *II* *I*

3

4 *3* *dim.* *2* *4* *Piano*

1 *3* *2* *3* *2* *1* *2* *1* *2*

esp. Al. istesso tempo

Piano *ms* *cresc. poco a poco*

affettuoso *3* *2* *1* *3* *2* *1* *Piano*

Piano 3 tacter dolce *dim.* *III*

Piano 2 tacter *p.*

poco cresc. *p cres* *dim.* *p.*

Piano 3 tacter cantabile *ms* *II* *I*

cresc. poco a poco. *II* *I*

Handwritten musical score for three staves. The top staff is in treble clef with a key signature of two flats and a common time signature. It contains several measures of music with slurs, accents, and a triplet. The middle staff is in alto clef with a common time signature and contains music with slurs and accents. The bottom staff is in bass clef with a common time signature and contains music with slurs, accents, and dynamic markings: mp., p., and pp. The piece concludes with a double bar line.

Beata
mp. Bergstrom 85'

Prelude.

Jämsö Raitio.
Op. 46

Largo maestoso.

Violino.

cantabile e molto tranquillo.

1 1 2 2

poco cresc. poco a poco

sub. q. 2

dim.

1, istesso tempo espr. ms

ms crescendo

affettuoso

SS dolce

dim.

mp.

poco cresc. poco a poco

8

Handwritten musical notation on three staves. The first staff contains a melodic line with a treble clef, a key signature of two flats, and a 3/4 time signature. It features eighth and sixteenth notes, some with slurs and triplets. The second staff continues the melody with similar notation and includes dynamic markings *mp.* and *dim.*. The third staff shows a few notes and a double bar line. The rest of the page consists of ten empty staves.