

The · Finland · Line · Fleet

n^o 115



Die Flotte der
Finnländischen Dampfschiffahrts A.G.

Nº 115



*The fleet
of the
Finska Ångfartygs Aktiebolaget
(Finland Steamship Co. Ltd.)
Helsingfors*

*Finnländische Dampfschiffahrts A.G.'s
Flotte*

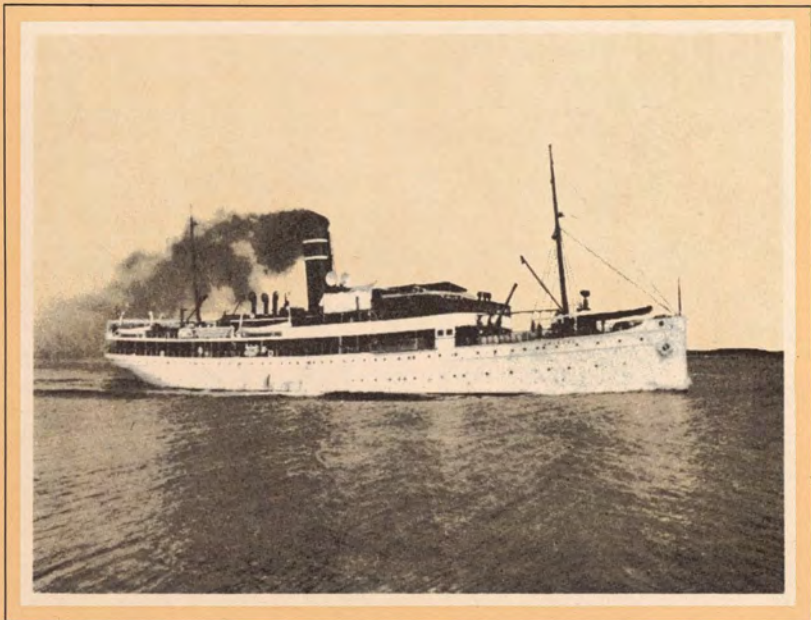
NWV.





Passenger Steamer's

Steamers Name Dampfer:	LINE:	Passengers		
		1 cl.	2 cl.	3 cl.
ARIADNE	Helsingfors—Stettin (Sommer)	182	71	12
ARCTURUS	Sommer: Helsingfors—Hull Helsingfors—Hull Winter: Kopenhagen—	82	—	185
OBERON	Sommer: Helsingfors—Hull Helsingfors—Hull Winter: Kopenhagen—	100	—	236
WELLAMO	Sommer: Helsingfors—Kopenhagen Winter: Helsingfors—Stettin	81	—	48
OIHONNA	Helsingfors—Stockholm	83	20	8
TORNEÅ	Åbo—Stockholm	50	27	—
BALTIC	Helsingfors—Antwerpen	13	12	150
CAPELLA	Helsingfors—Antwerpen	18	—	—



s/s Ariadne

BUILT Gebaut	} 1914	LENGTH Länge	} 272'0"
TONNAGE Reg. T.	} 2500 t.	BREADTH Breite	} 43'6"
SPEED Geschwindigkeit	} 14	DRAUGHT Tiefe	} 19'0"
H. P. I. P. S.	} 3300	WIRELESS SIGNAL Anruf Signal	} O J M

ARIADNE



S/S Ariadne



DINING SALOON

SPEISESALON

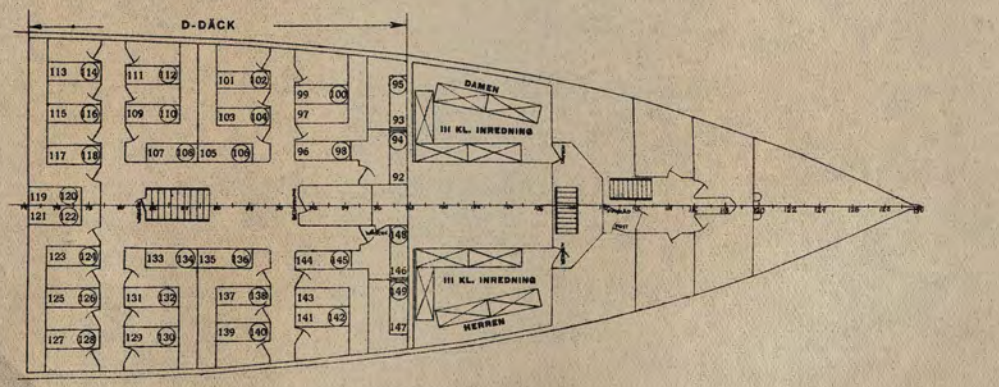
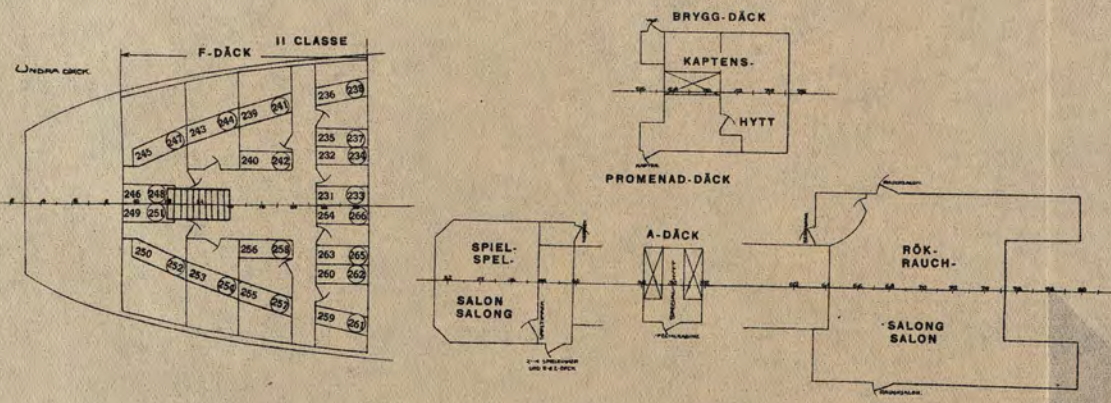
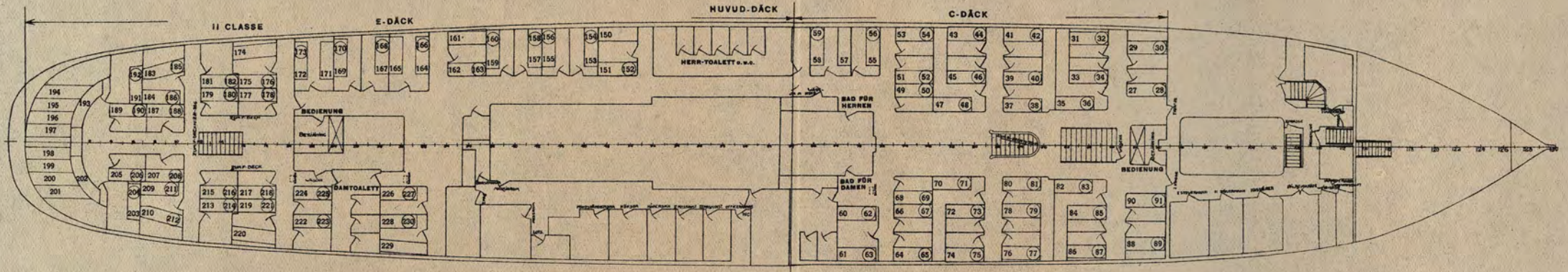
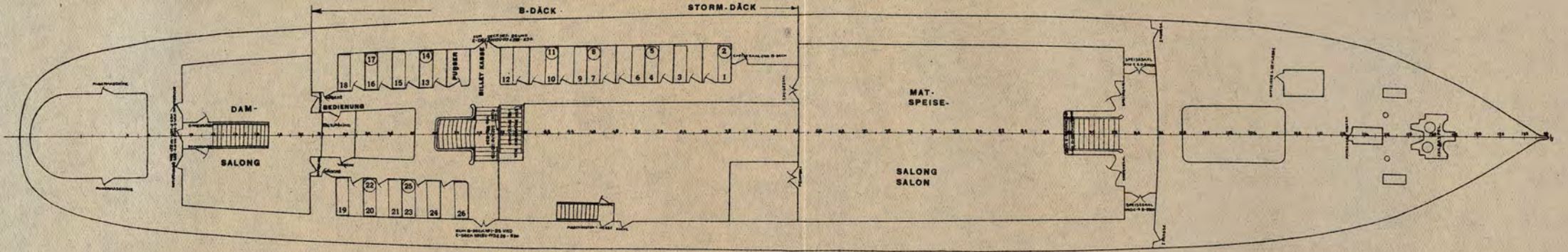


1st cl. CABIN
1. Kl. Kabine



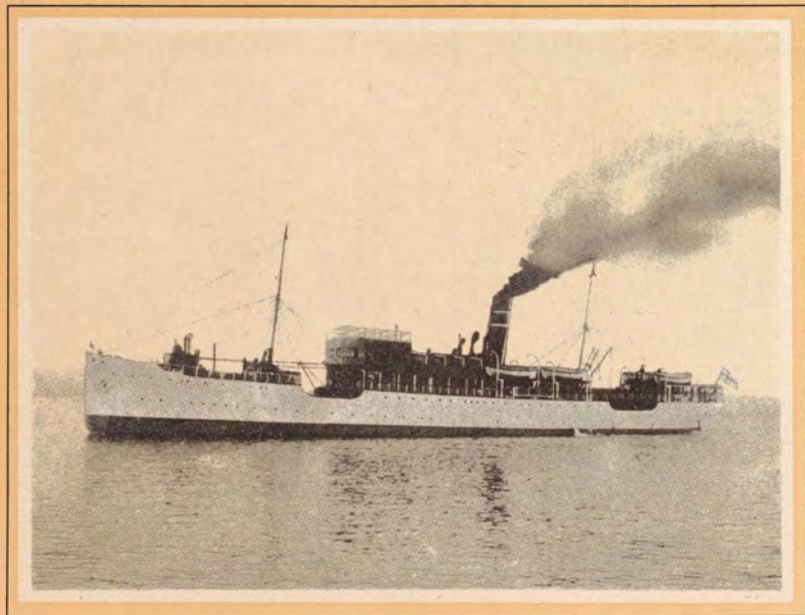
2nd cl. CABIN
2. Kl. Kabine

3/5 ARIADNE



Die mit einem ○ bezeichneten nummern sind obere Plätze.

ARIADNE
PLAN



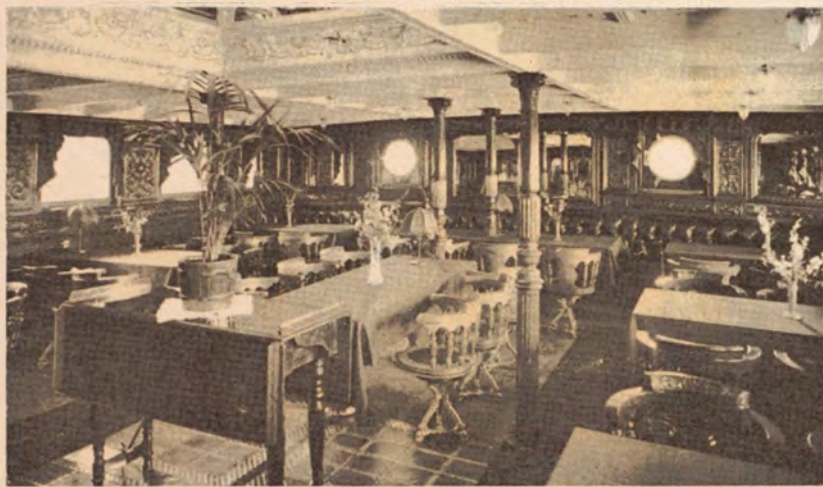
s/s Arcturus

BUILT <i>Gebaut</i>	} 1898	LENGTH <i>Länge</i>	} 280'00"
TONNAGE <i>Reg. T.</i>	} 2100 t.	BREADTH <i>Breite</i>	} 38'00"
SPEED <i>Geschwindigkeit</i>	} 13,5	DRAUGHT <i>Tiefe</i>	} 20'00"
H. P. <i>I. P. S.</i>	} 3500	WIRELESS SIGNAL <i>Anruf Signal</i>	} O J N

ARCTURUS



S/S Arcturus



DINING SALOON

SPEISESALON

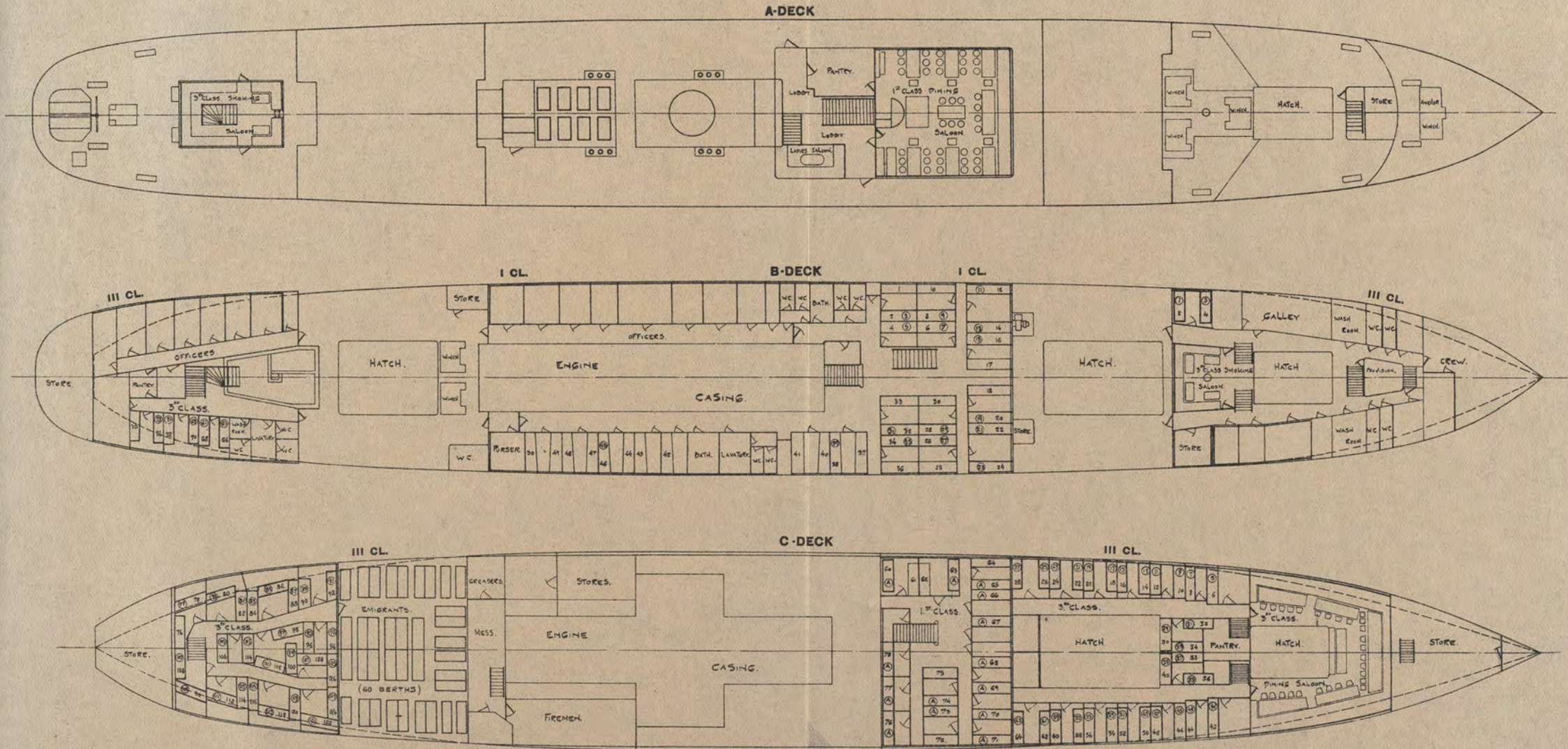


1st. cl. CABIN
1. Kl. Kabine



3rd cl. CABIN
3. Kl. Kabine

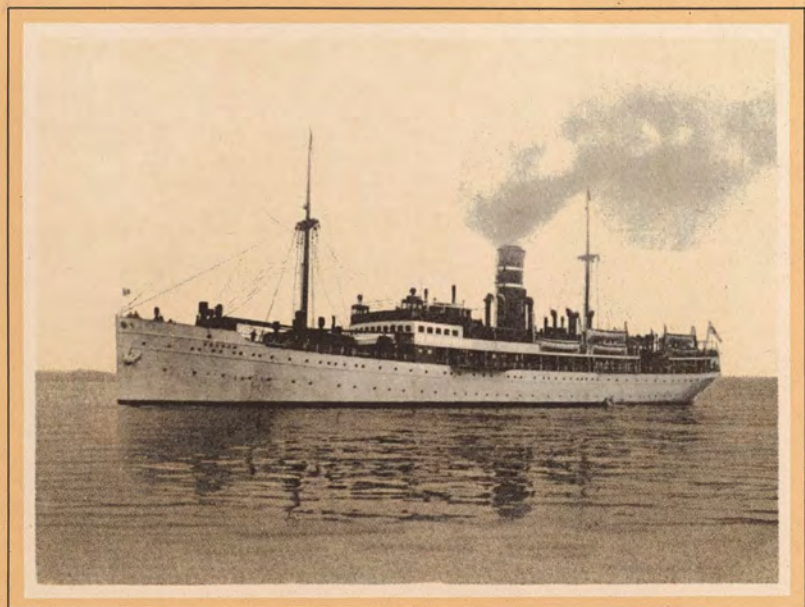
S/S ARCTURUS



De med ○ betecknade siffrorn äro
övre platser.

All Berths marked thus: ○ are Upper
Berths.

S/S
ARCTURUS
FINN



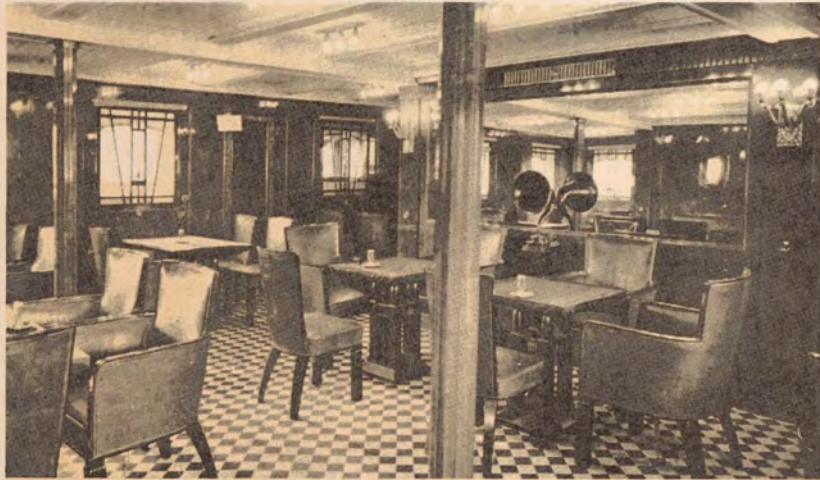
s/s Oberon

BUILT Gebaut	} 1925	LENGTH Länge	} 305'6"
TONNAGE Reg. T.	} 3000 t.	BREADTH Breite	} 44'0"
SPEED Geschwindigkeit	} 15	DRAUGHT Tiefe	} 21'7"
H. P. I. P. S.	} 4500	WIRELESS SIGNAL Anruf Signal	} O J A P

OBERON

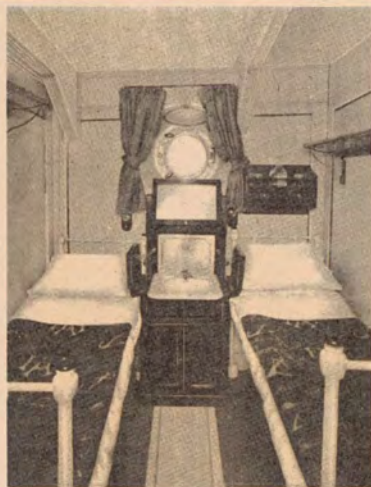


S/S Oberon

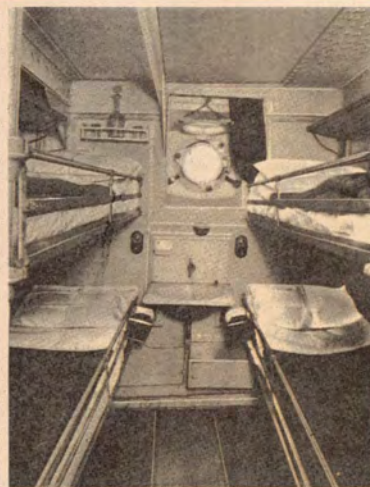


SMOKING SALOON

RAUCHSALON



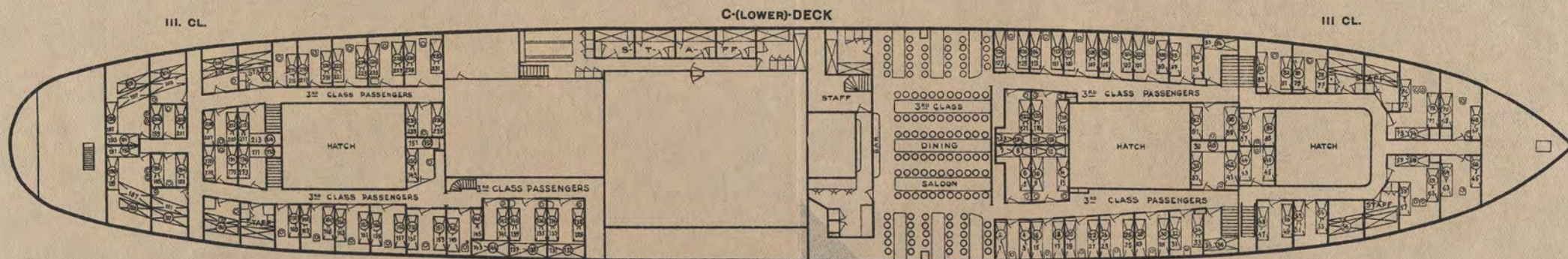
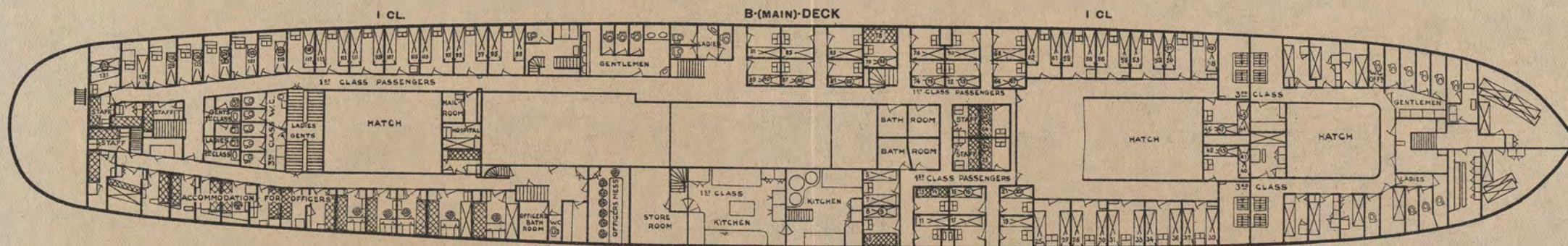
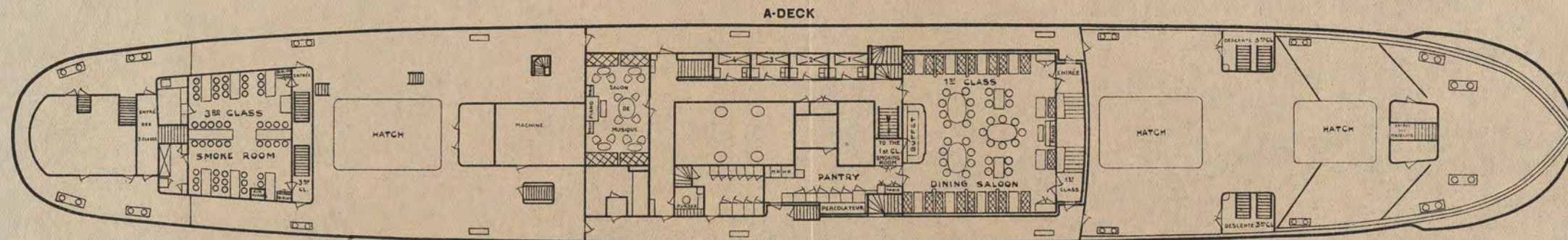
*1st cl. CABIN
1. Kl. Kabine*



*3rd cl. CABIN
3. Kl. Kabine*

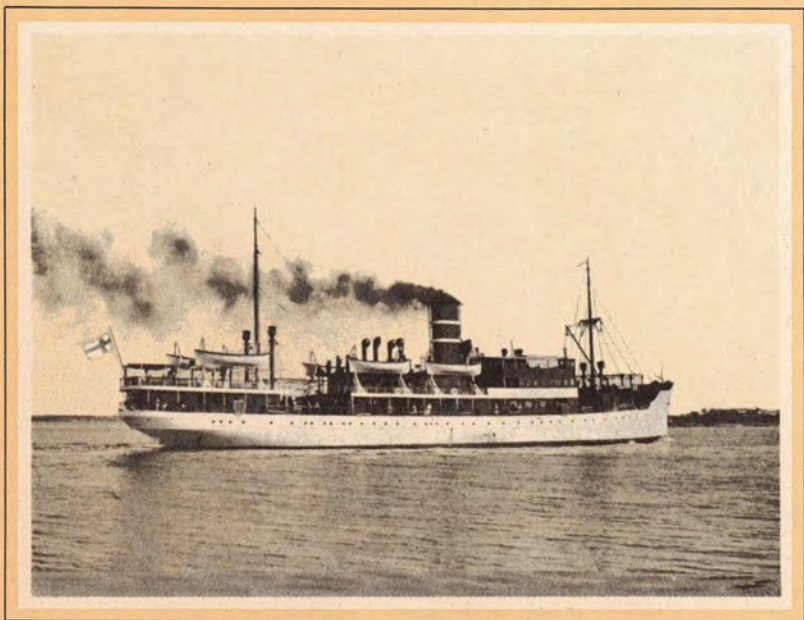
S/S OBERON

SMOKROOM
VERANDAH CAFE } SITUATED AMIDSHIPS
WIRELESS } ON BOAT DECK



De med ○ belemnade siffrorna äro
övre platser.
All Berths marked thus: ○ are Upper
Berths.

S/S OBERON
PLAN



s/s *Wellamo*

BUILT Gebaut	} 1927	LENGTH Länge	} 263' 0"
TONNAGE Reg. T.	} 2050 t.	BREADTH Breite	} 40' 0"
SPEED Geschwindigkeit	} 14	DRAUGHT Tiefe	} 17' 6"
H. P. I. P. S.	} 2300	WIRELESS SIGNAL Anruf Signal	} O J B I

WELLAMO



SMOKING SALOON *RAUCHSALON*

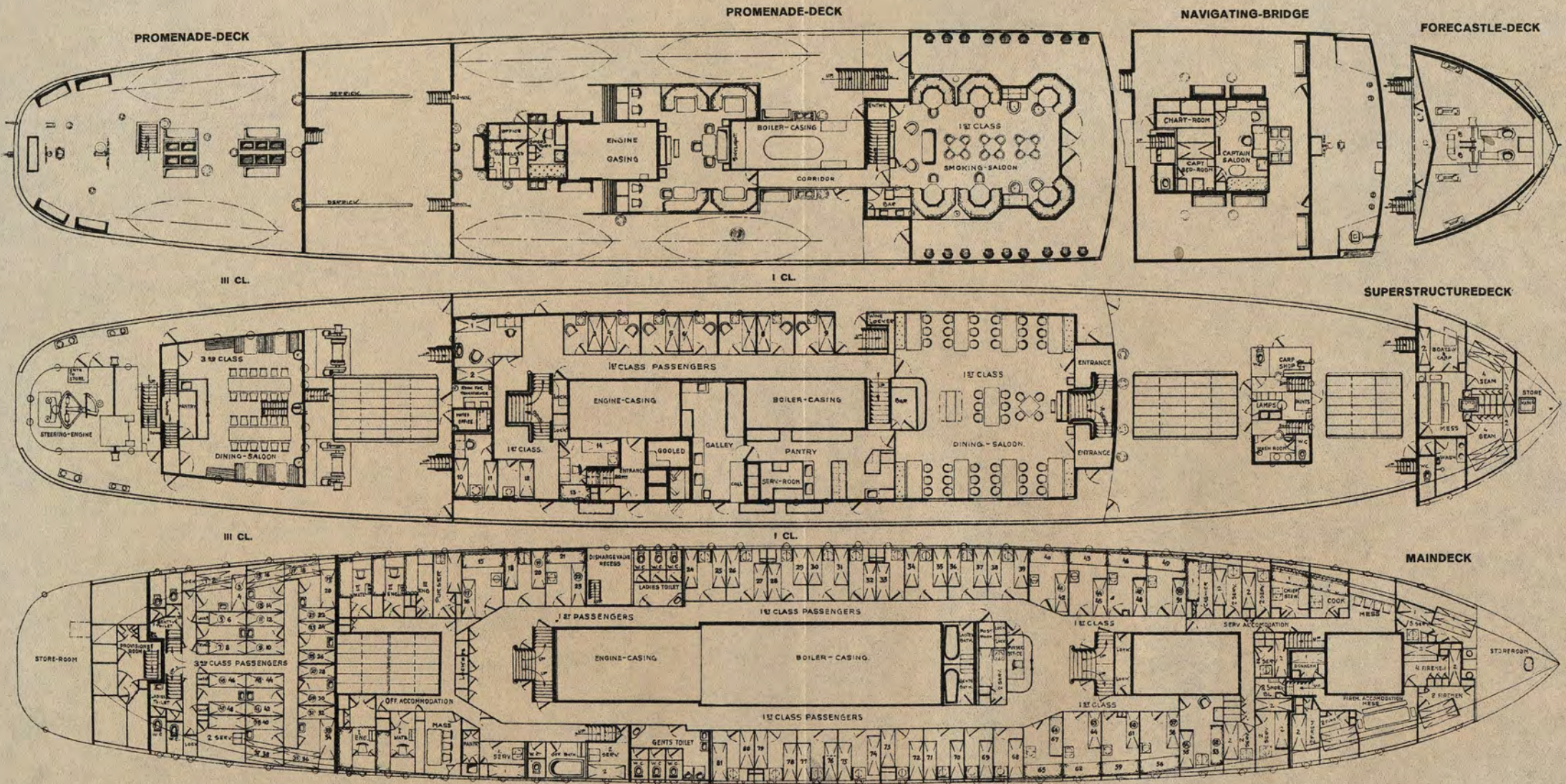


MUSIC SALOON *MUSIKSALON*



1st Cl. CABIN *1. Kl. KABINE*

S/S WELLAMO



De med O betecknade siffrorna äro
övre platser.

All Berths marked thus: O
are Upper Berths

MALEY
MAY



s/s Oihonna

BUILT Gebaut	} 1898	LENGTH Länge	} 212' 0"
TONNAGE Reg. T.	} 1100 t.	BREADTH Breite	} 31' 1"
SPEED Geschwindigkeit	} 12,5	DRAUGHT Tiefe	} 18' 00"
H. P. I. P. S.	} 1260	WIRELESS SIGNAL Anruf Signal	} O J A E

OIHONNA

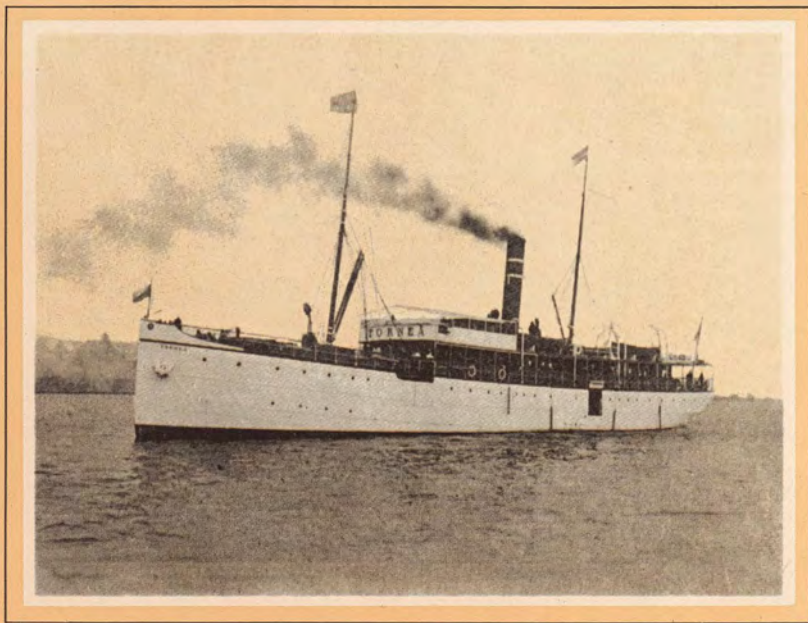


s/s Oihonna



DINING SALOON

SPEISESALON



s/s Tornea

<i>BUILT</i> <i>Gebaut</i>	} 1876	<i>LENGTH</i> <i>Länge</i>	} 182' 8"
<i>TONNAGE</i> <i>Reg. T.</i>	} 705 t.	<i>BREADTH</i> <i>Breite</i>	} 25' 10"
<i>SPEED</i> <i>Geschwindigkeit</i>	} 11,5	<i>DRAUGHT</i> <i>Tiefe</i>	} 12'
<i>H. P.</i> <i>I. P. S.</i>	} 750	<i>WIRELESS SIGNAL</i> <i>Anruf Signal</i>	} —

TORNEA



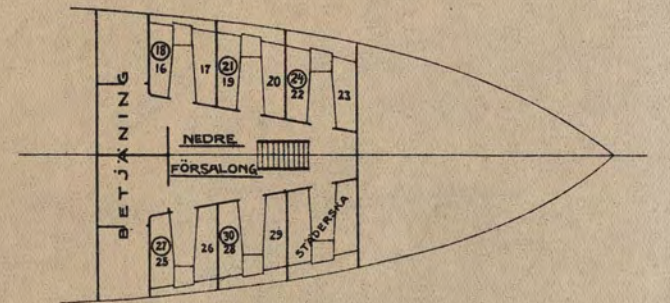
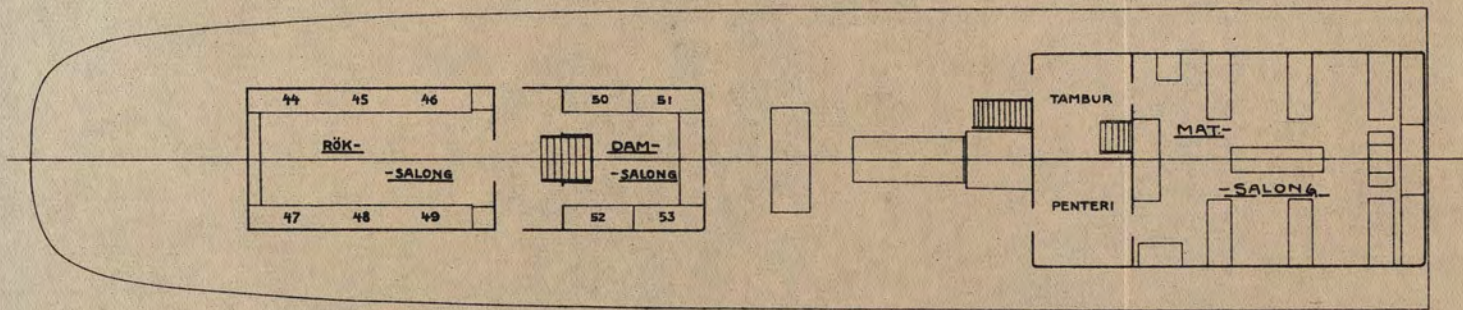
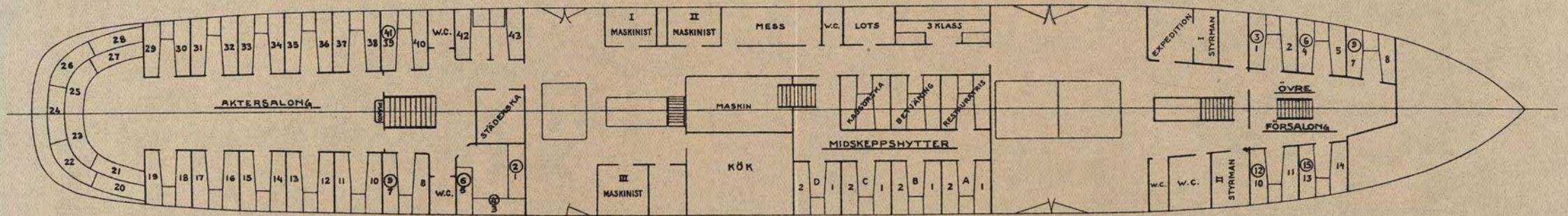
S/S Tornea



DINING SALOON

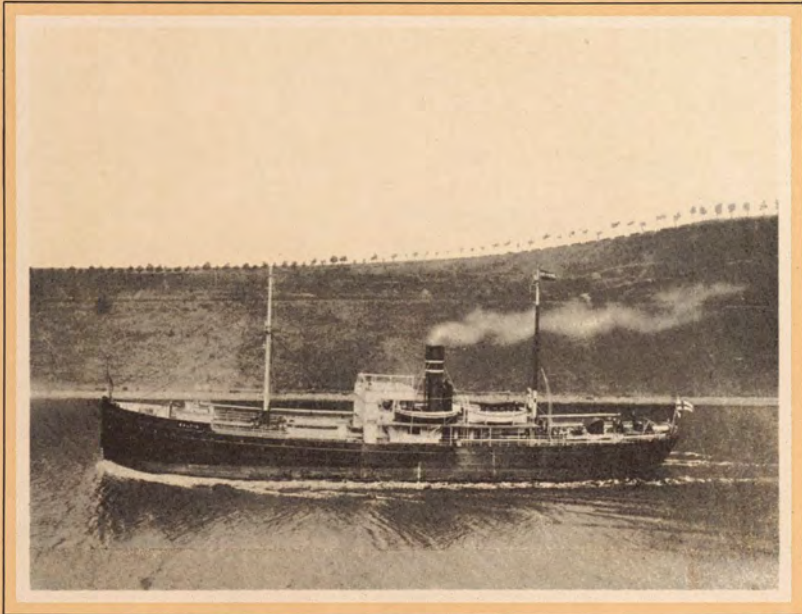
SPEISESALON

S/S „TORNEÅ“



○ BETECKNAR NUMMER PÅ ÖVERKOJ

PLAN
TORNEÅ
S/S



s/s Baltic

BUILT Gebaut	} 1898	LENGTH Länge	} 209'7"
TONNAGE Reg. T.	} 1200 t.	BREADTH Breite	} 32'6"
SPEED Geschwindigkeit	} 10	DRAUGHT Tiefe	} 18'0"
H. P. I. P. S.	} 750	WIRELESS SIGNAL Anruf Signal	} O J Y

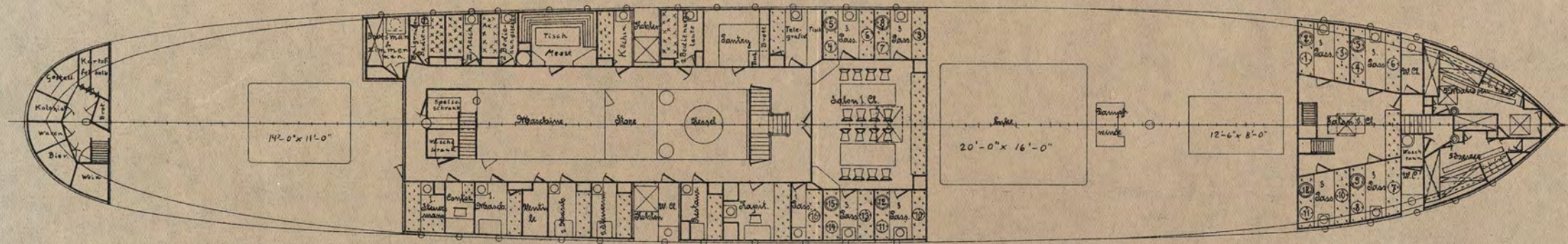
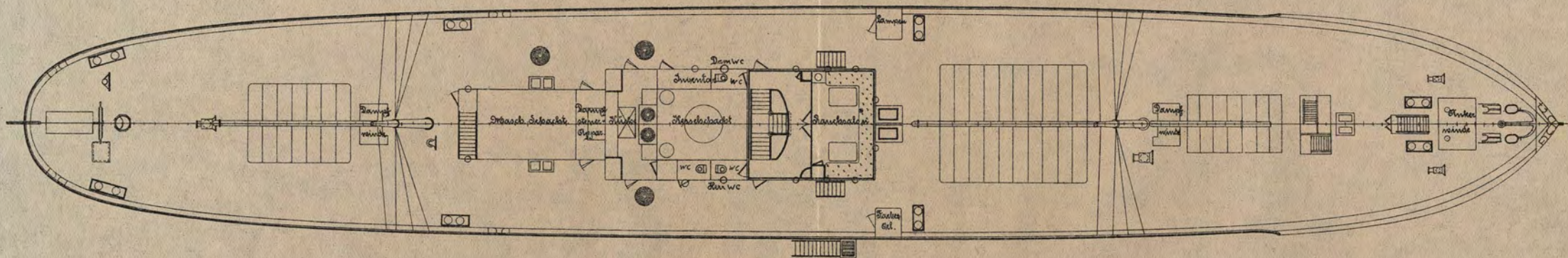
BALTIC



The BALTIC

Die OSTSEE

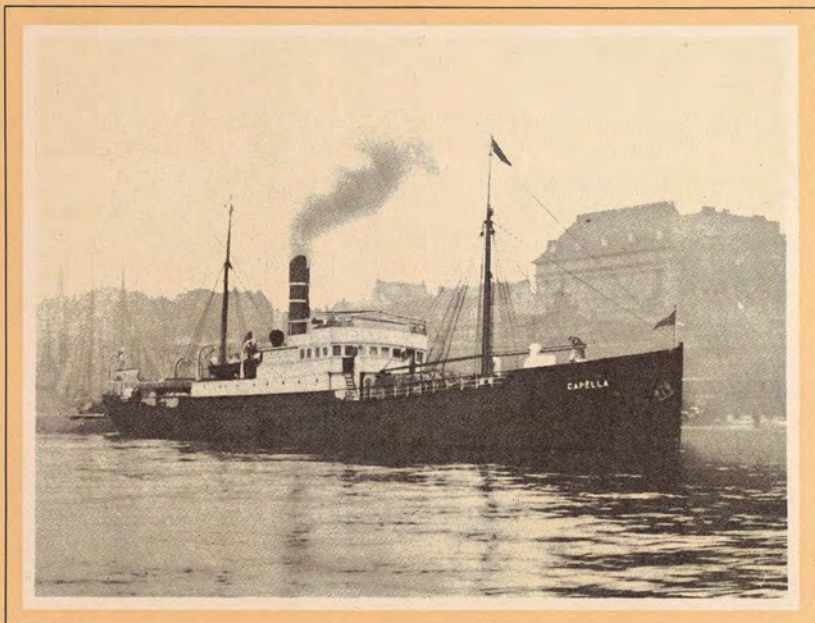
S BALTIC



○ BETECKNAR UNDERKOJ

○ - - - ÖVERKOJ

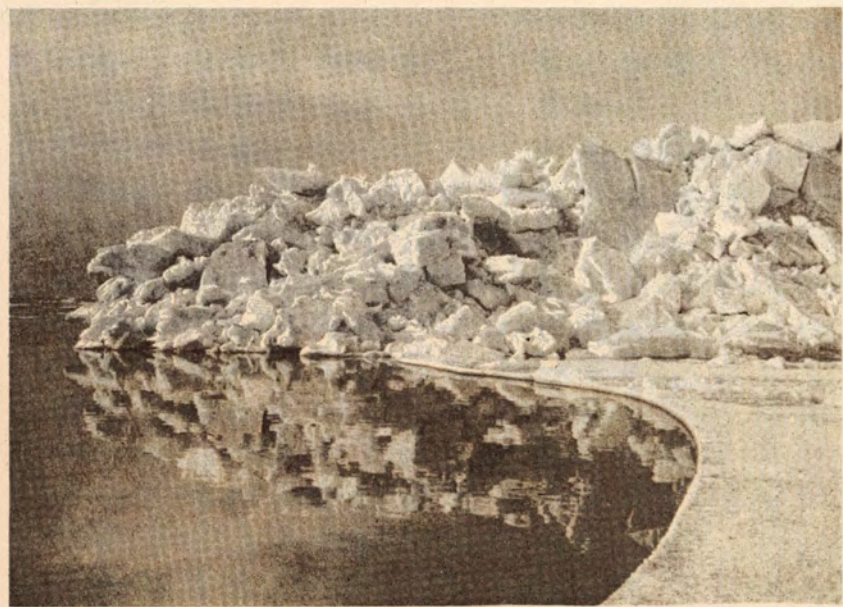
S BALTIC
PLAN



s/s Capella

BUILT Gebaut	} 1888/1921	LENGTH Länge	} 205'6"
TONNAGE Reg. T.	} 1100 t.	BREADTH Breite	} 29'6"
SPEED Geschwindigkeit	} 9,5	DRAUGHT Tiefe	} 17'00"
H. P. I. P. S.	} 500	WIRELESS SIGNAL Anruf Signal	} —

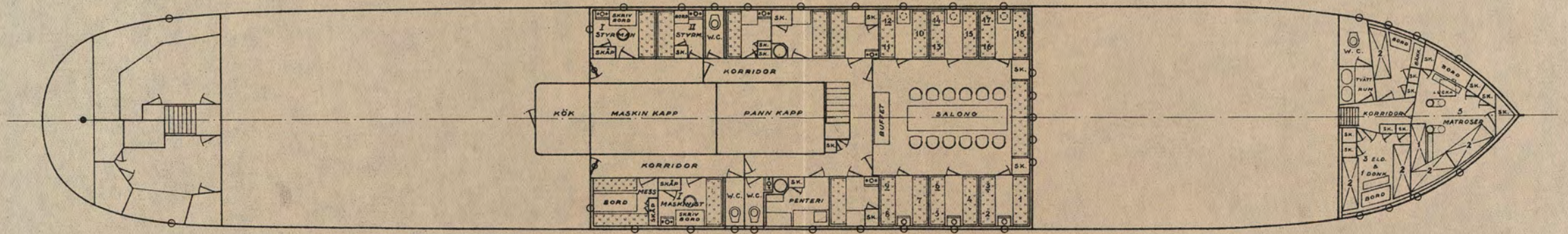
CAPELLA



*Pack-Ice in
the Gulf of Finland.*

*Packeis im
Finnischen Meerbusen*

S/S CAPELLA



S/S
CAPELLA
PLAN