

VATT-KESKUSTELUALOITTEITA
VATT-DISCUSSION PAPERS

264

ON ECONOMIC
POVERTY
IN FINLAND
IN THE 1990s

Marja Riihelä
Risto Sullström
Matti Tuomala

ISBN 951-561-389-2

ISSN 0788-5016

Valtion taloudellinen tutkimuskeskus

Government Institute for Economic Research

Hämeentie 3, 00530 Helsinki, Finland

Email: marja.riihela@vatt.fi

risto.sullstrom@vatt.fi

ktmatuo@uta.fi

Oy Nord Print Ab

Helsinki, joulukuu 2001

RIIHELÄ MARJA, SULLSTRÖM RISTO, TUOMALA MATTI: ECONOMIC POVERTY IN THE 1990s. Helsinki, VATT, Valtion taloudellinen tutkimuskeskus, Government Institute for Economic Research, 1999, (C, ISSN 0788-5016, No 264). ISBN 951-561-389-2.

Abstract: We have examined recent trends in the poverty in Finland using two data sources, the Household Budget Survey (HBS) and the Income Distribution statistics (IDS). We have drawn on the recent literature on poverty analysis to analyse a range of poverty measures. Scalar measures were complemented by an investigation of stochastic dominance in the analysis of poverty. As regards trends in poverty over time, the long-run perspective available from the HBS indicates that from the early 1970s to the beginning of 1990s, the relative poverty rate has declined. The latter part of the 1990s was clearly different. We find that poverty rose and became more severe over the period 1995-1999 for a very broad class of poverty measures and a wide range of poverty lines. Whilst the total numbers in poverty during the 1990s on these various definitions have risen markedly, the composition of the poor has also changed significantly. There is little doubt that unemployed households are the most vulnerable group of the population.

Key words: poverty, poverty measures, ordinal poverty comparisons

RIIHELÄ MARJA, SULLSTRÖM RISTO, TUOMALA MATTI: ECONOMIC POVERTY IN THE 1990s. Helsinki, VATT, Valtion taloudellinen tutkimuskeskus, Government Institute for Economic Research, 1999, (C, ISSN 0788-5016, No 264). ISBN 951-561-389-2.

Tiivistelmä: Tutkimuksessa tarkastellaan köyhyyden viimeaikaista kehitystä Suomessa Kulutustutkimusten (HBS) ja Tulonjakotilastojen (IDS) avulla. Tutkimus hyödyntää laajaa köyhyydenmittaamista käsittelevää kirjallisuutta. Kardiinaalisten mittojen lisäksi hyödynnetään stokastisen dominanssin ideaa, jonka avulla voimme tehdä ordinaalisia köyhyysvertailuja. Kulutusaineistoihin (HBS) perustuva pitkän aikavälin kuva köyhyyden kehityksestä osoittaa, että 1970-luvun alusta 1990-luvun alkuun suhteellinen köyhyys on laskenut. 1990-luvun jälkipuoliskolla kehitys on ollut erisuuntainen. Tutkimuksessa havaitaan, että köyhien lukumäärä kasvoi voimakkaasti ja että köyhyys syveni vuodesta 1995 vuoteen 1999 arvioituna usealla köyhyysmittarilla ja köyhyysrajalla. Samalla kun köyhien kokonaismäärä on lisääntynyt 1990-luvulla, myös köyhyyden rakenne on muuttunut merkittävästi. Erityisesti työttömillä kotitalouksilla on suuri riski joutua köyhäksi.

Asiasanat: köyhyys, köyhyysmitat, ordinaalinen köyhyysvertailu

Contents

1. Introduction	1
2. Measuring poverty.....	3
3. The data and results	8
4. Conclusions	21
References	22
Appendices	
Figures A1-A4	24
Tables A1, A2	26

1. Introduction¹

Given the results of Riihelä et al. (2001) – particularly the absolute fall in mean real disposable incomes for the unemployed households during the 1990's – it is not surprising that poverty as a whole increased over the 1990's in Finland. The present paper explores poverty trends in greater detail. In order to quantify the extent of poverty during the 1990's in Finland we have to choose the yardstick by which poverty should be measured? Is it about incomes or expenditures? In this paper we use these both yardsticks. Second, having determined the yardstick, we have to decide at what point on the income or expenditure scale is the poverty line to be set. Should it be incomes or expenditures below some fraction of the national average? Or should it be incomes or expenditures close to minimum social security levels?²

As one could expect, there is no single answer to the question of how many people in Finland are poor. In this paper we provide a range of estimates that vary according to the poverty line and method of measuring living standard that are used. We report results from two main sources, the Household Budget Survey (HBS) and the Income Distribution Statistics (IDS) published by the Statistics Finland. The paper presents information on changes in the extent and composition of poverty, according to three aggregation procedures—one for each of the poverty measures computed: the headcount ratio (H), the normalized poverty gap (HI) and the Foster-Greer-Thorbecke (FGT) measure with the poverty aversion parameter set to 2. In addition, scalar measures were complemented by an inves-

¹ This study is part of the project “Economic manifestation of inequality, poverty and social exclusion”. The project is financed by the Academy of Finland under the research program “Marginalization, inequality and ethnic relations in Finland”. We are grateful to Reino Hjerppe, Seija Ilmakunnas and Ilpo Suoniemi for very useful comments.

² Given the multidimensionality of the standard of living one can argue a great deal at the theoretical level about the various methods of deriving a poverty line, and such debate is important. In practice, however, it is data availability, which almost always dictates the method chosen. We have typically to work with a given household income and expenditure survey.

tigation of stochastic dominance in the analysis of poverty. Finally we utilize the decomposable property of FGT-measure.

2. Measuring poverty

There are two fundamental questions when measuring poverty. First, we have to decide how an individual's standard of living should be quantified, and relatedly, how the poverty line is to be determined. The second question is how the degree of poverty relative to a particular poverty line is measured and how this is aggregated across those who are deemed to be poor. An important difference between the literature for developing and developed countries is that absolute considerations have dominated the former while relative poverty has been more important in the latter. Some researcher, for example, Townsend (1985), commenting on Sen (1983), has taken the view that poverty is entirely relative.

A widely used method of defining poverty in developed countries is to relate incomes or expenditures to some proportion of prevailing national average. National average can be defined as median or mean, the proportion used can vary, say from 40 to 60 per cent, but the general principle is that poverty is to be defined wholly by distance from national average income or expenditure. Statistics of this kind are now widely used in comparative studies in the EU context (see e.g. Danziger-Jäntti, 2000).

There is now a large literature on poverty measures. For useful surveys see e.g. Foster (1984), Atkinson (1987), Ravallion (1994) and Zheng (1999). Here we shall focus on a few representative measures and those we use in our empirical analysis. In the discrete case, let there be N income receiving units and let the income unit i be denoted by y_i . The incomes and expenditures are arranged in ascending order and poverty line is z . More formally $y_1 \leq y_2 \leq \dots \leq y_n < z \leq y_{n+1} \leq \dots \leq y_N$ where there are n units below the poverty line. In the continuous case, let the density and cumulative density of y be given respectively by $f(y)$ and $F(y)$; and let y lie between y_{min} and y_{max} .

The most commonly used measure of poverty is the so-called head count ratio, the fraction of income-receiving units which are below the poverty line. Denoting this by H , it follows that in the discrete case and continuous case, respectively,

$$H = n/N, H = F(z). \quad (1)$$

For example, if 10 per cent of the population are deemed to be poor, then $H = 0.10$. While identifying the number of the poor, it ignores how poor the poor are, and therefore has the absurd property that it remains unchanged when a previously poor unit becomes even poorer. For example, if we take one Euro from the poorest unit and give it to the richest unit, the head count ratio would remain unchanged. This is one reason why the head count measure used as a measure of poverty has been under severe attack (see e.g. Sen 1976, 1979, and Watts, 1968). For certain sorts of poverty comparisons, such as assessing overall progress in reducing poverty, head count ratio may be quite satisfactory. Atkinson (1987, 1998) was among the few scholars who saw that the attack on the head count is not fully justified. He argued that ‘minimum income may be seen as a basic right, in which case the head count may be quite acceptable as a measure of the number deprived of that right’.

One index which overcomes drawbacks of the head count measure is the income gap ratio, defined as

$$P_1 = \frac{1}{N} \sum_{i=1}^n (1 - y_i / z) \quad (2)$$

This reflects the average distances of the poor below the poverty line and therefore it gives a better idea of the depth of poverty. (2) can also be written $P_1 = HI$, where $I = 1 - m^z/z$, where m^z denotes the mean income or consumption of the poor. This gives the average of the poverty gaps ($z - y_i$) as a fraction of the poverty line. To take account of the numbers of the poor in the sense that if the poor

units were exactly duplication, I would remain unchanged, it is suggested that the product of HI would be more satisfactory. Thus HI is sensitive to both the numbers of the poor and to how poor they are. HI has an interesting interpretation, which makes it very attractive in policy applications. Namely HI measures the actual amount of income necessary to bring every household below the poverty line up to the poverty line. The drawback of the HI measure is that it is insensitive to redistribution of income within the poor household. If one Euro of income was taken from the poorest unit and given to a unit which is richer but still well below the poverty line the HI measure would remain unchanged. Sen (1976) has proposed a better measure of the severity of poverty, given by

$$S = H[I + (1-I)G_p] \quad (3)$$

Where G_p is the Gini coefficient of poor income units. If there is no inequality amongst the poor then $S = HI$. The S -measure in turn is not additive. In other words S is not equal to the population weighted sum of poverty levels in the various sub-groups of society. A measure of the severity of poverty which is decomposable is the Foster, Greer and Thorbecke (1984) (hereafter FGT). The FGT class of measure can be written as

$$P_a = \frac{1}{n} \sum_{i=1}^n [(z - y_i) / z]^a \quad (4)$$

The parameter $a \geq 0$ measures how sensitive the index is to transfers between the poor units. For $a > 1$, transfer from low to high incomes will increase poverty. When $a = 2$, this measure can be expressed as

$$P_a = H[I^2 + (1-I)^2 C_p^2] \quad (5)$$

Where C_p is the coefficient of variation among the poor. This class of measure has proven very useful for policy analyses. It already contains indices (H) and (HI) as special cases

$$P(a=0) = P_0 = H \quad (6)$$

$$P(a=1) = P_1 = HI. \quad (7)$$

It is clearly the decomposability of P_a which has led to its widespread application in practice.³ Divide the population into m subgroups, mutually exclusive and exhaustive, with group j having a fraction x_j of the population; $\sum_{j=1}^m x_j = 1$. Denote the poverty index in subgroup j by $P_{j,a}$. Then

$$P_a = \sum_{j=1}^m x_j P_{j,a}. \quad (8)$$

Thus, overall poverty can be written as a weighted sum of subgroup poverty indices.

Although major advances have been made in the search for better cardinal measures of poverty, there is still widespread concern over arbitrariness in the choice of the poverty measure and the poverty line. Fortunately, for many applications, all that we need is the ordinal ranking of distribution. As Sen (1979) noted that “one may be forced to use more than one criterion because of non-uniformity of accepted standard and look at the partial ordering generated by the criteria taken together” (p. 280). An important strand of research in poverty analysis (Atkinson, 1987; Foster-Shorrocks, 1988) drawing on and developing results from the theory of stochastic dominance has shown when one can make reasonable ordinal poverty comparisons.

³ E.g. in analysing the targeting of poverty alleviation programs see Kanbur (1987), Besley and Kanbur (1988) and Kanbur, Keen and Tuomala (1994).

If ordinal comparisons suffice, we need not confine ourselves to a particular poverty line and poverty measure. If the class of poverty measures satisfies certain conditions, we can apply the first-order dominance test. Then it can be shown that poverty will unambiguously increase (decrease) between two dates, say 1990 and 1998 in Finland, if the cumulative distribution for the latter date lies nowhere below (above) that for the former date, up to z_{max} . Comparing distributions of 1990 and 1998, denoted by $F(1990,z)$ and $F(1998,z)$, if $F(1998,z)$ is everywhere above $F(1990,z)$ up to z_{max} , then the head count index must also be higher for 1998, no matter what the poverty line. When the first-order dominance is inconclusive, we can restrict the range of admissible poverty measures (excluding H) then we can use a second order dominance condition. In other words we restrict attention to measures which reflect the depth of poverty such as HI and P_2 . When a second-order dominance, in turn, is inconclusive we can exclude H and HI and restrict our attention on distribution-sensitive measures such as P_2 , then a third order dominance condition can be tested.

3. The data and results

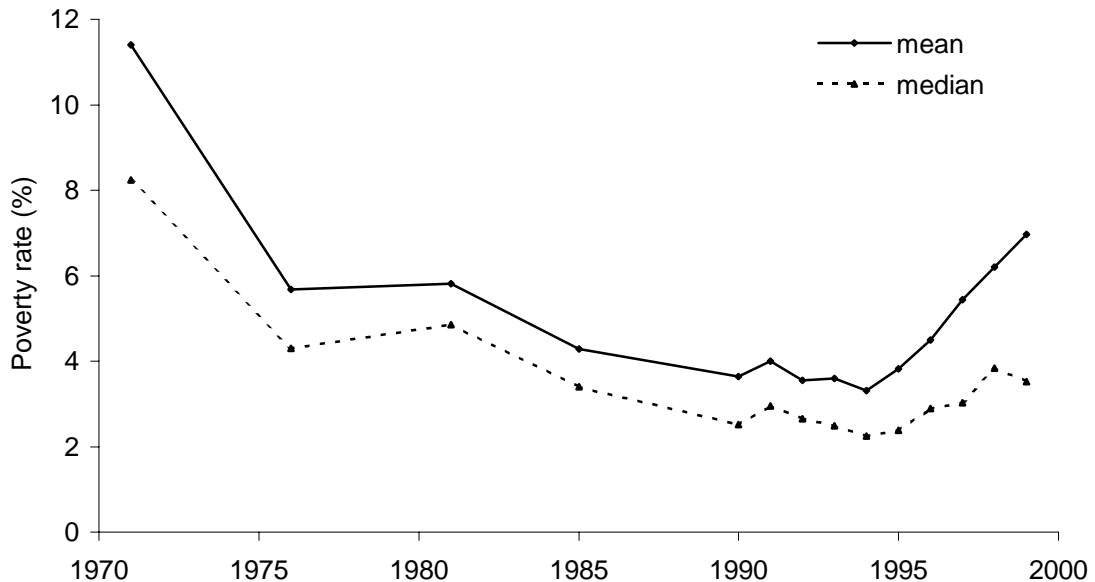
We use the income distribution statistics (IDS) and the Household budget survey (HBS)⁴ published by the Statistics Finland. The IDS is a sample survey of around 9000-11000 households drawn from the private households in Finland. The IDS contains information on incomes, taxes and benefits together with various socio-economic characteristics of the Finnish households. Most of the information contained in the IDS has been collected from various administrative registers. Auxiliary information is collected through interviews. Indirect taxes, such as VAT and specific commodity taxes and the provision of public services are not included on our data. This may have important consequences, because indirect taxes and public services tend to be regressive (see for example Riihelä-Sullström, 2001). All types of income and consumption used in this study are calculated on annual basis.

Households also differ in size and composition, and so a simple comparison of aggregate household consumption could be quite misleading about the well-being of individual members of a given household. The OECD equivalence scale is used in order to make households with different size and composition comparable. The OECD scale is calculated as follows. The first adult in each household has a weight of 1 and each additional adult a weight of 0.7. Each child under 18 years old gets a weight of 0.5. We also make comparisons with the so called modified OECD-scale, shortly MOECD. In this scale the first adult in each household has a weight of 1 and each additional adult a weight of 0.5. For the children, aged 0-13, the weight is 0.3. Members aged over 13 are adults. The new EU standard for the poverty line is determined by 60 per cents of median income (see Atkinson 2000).

⁴ See Suoniemi and Sullström (1995) and Ahlqvist and Pajunen (2000) for a detailed exposition of this data set.

Figure 1 shows the trends in the relative poverty (defined in terms of having low income relative to a contemporaneous standard of living) between 1970 and 1999 when a poverty line is set equal to 50% of median and mean income of the year concerned. The figure reveals that relative poverty declined until the mid 1990s. It rose, thereafter, sharply during the latter part of the 1990s. The relative income poverty rate⁵, a poverty line set at 50 % of median (mean) income, was in 1971 8.3 per cent (11.4), in 1993 2.5 per cent (3.6) and in 1999 3.6 per cent (7.0) (see Appendix Table A1). Figure 1 also reveals that the relative poverty measured as a fraction of mean is always greater than that of measured as a fraction of median. The growing gap between mean and median based measures is consistent with the findings of the increase in income inequality during that period (see Riihelä et al., 2001).

Figure 1 *Percentage of the population below 50 per cent of mean and median disposable income, 1971-1999*



⁵ Numbers of the population below 50% of median (mean) income are in 1971 369000 (511000), in 1993 125000 (181000) and in 1999 180000 (355000).

Figure 2 *Percentage of the population below 50 per cent of mean and median consumption, 1971-1998*

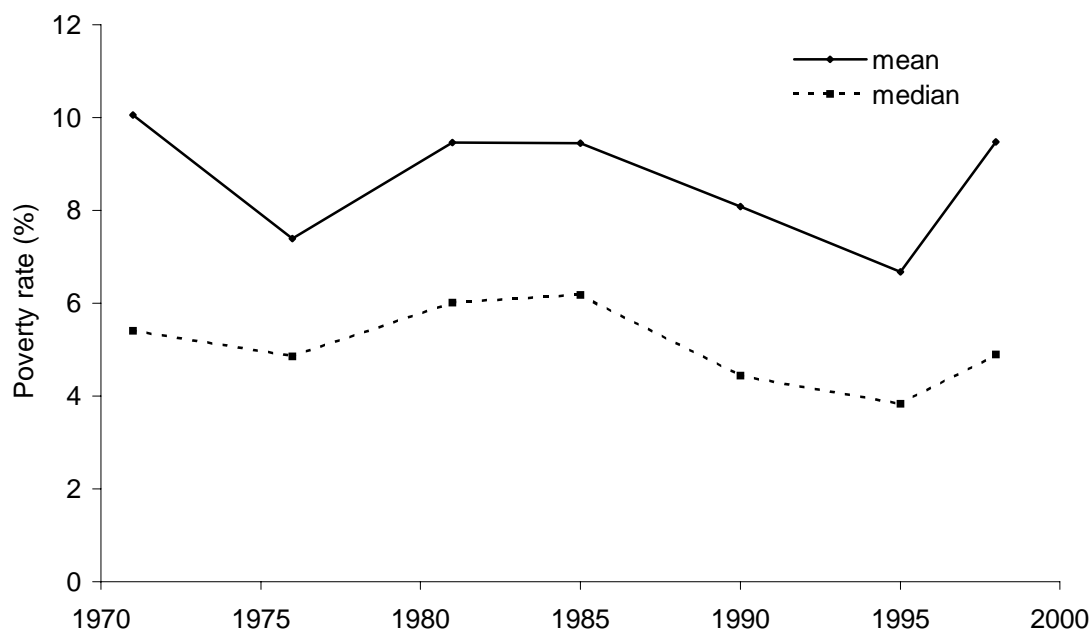


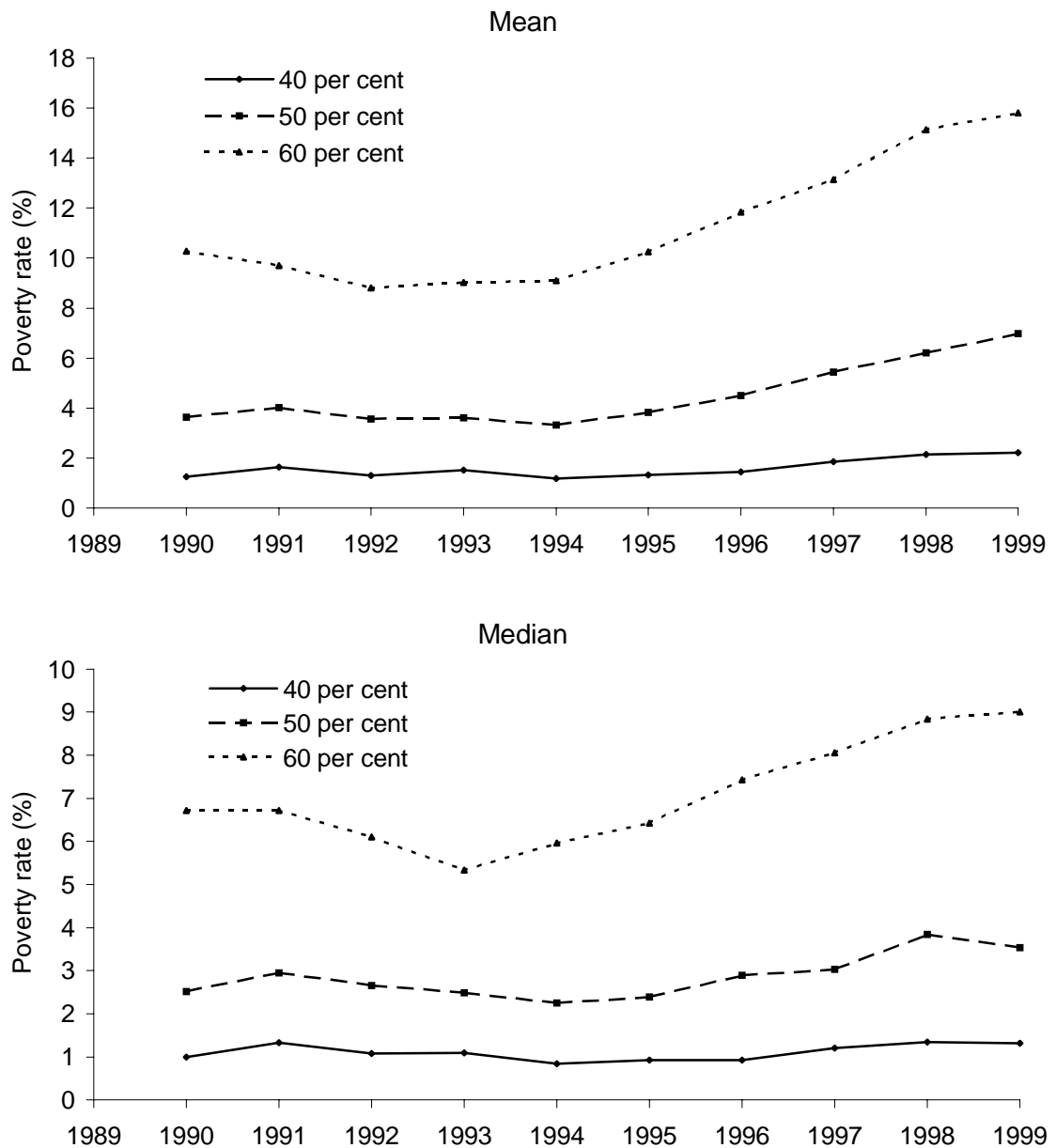
Figure 2 in turn shows the trends in the relative poverty when based on consumption expenditure. We can see that in this case relative poverty declined from year 1985 to the mid 1990s. However, the trends of income and consumption poverty are in the direction with the same tendency in the late of 1990s. The relative consumption expenditure poverty rate⁶, a poverty line set at 50 % of median (mean), was in 1971 5.4 per cent (10.1), in 1990 4.4 per cent (8.1), in 1994-1996 3.8 per cent (6.7) and in 1998 4.9 per cent (9.5).

What is striking about Figure 3 is that whether the poverty line is set at 40 per cent, 50 per cent or 60 per cent of national average income, the numbers below the line have risen dramatically since the beginning of the 1990s. Using the 50 per cent threshold, the proportions have risen from 3.7 per cent to 7.0 per cent of the population. These charts do, however, demonstrate that the choice of poverty

⁶ Numbers of the population below 50% of median (mean) consumption expenditure are in 1971 24200 (450000), in 1990 220000 (399000), in 1994-1996 193000 (337000) and in 1998 248000 (482000).

line can still have important implications to the precise description of trends as well as levels (see Figures A1-A4).

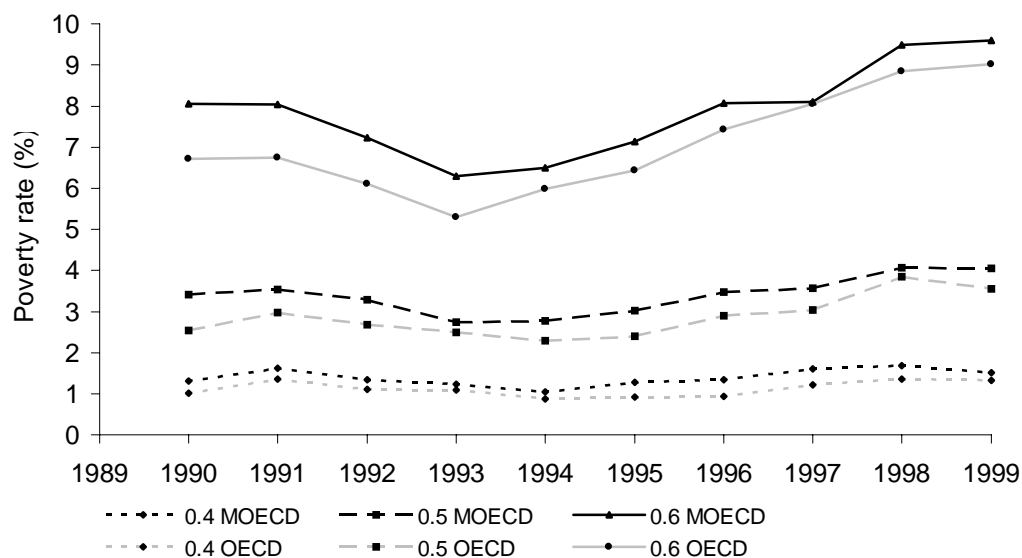
Figure 3 *Percentage of the population below 40, 50 and 60 per cent of mean and median disposable income 1990-1999*



The change in equivalence scales affects not only the level of poverty, but also the composition of poverty. The level-effect of adopting the modified OECD

scale (MOECD) is shown in Figure 4. (see also Table A1 and Table A2 in Appendix).

Figure 4 Poverty rates by OECD- and MOECD-scales modified incomes as a proportion of median disposable income¹



¹ See Economic Council (2001)

One problem with the poverty measure based on a proportion of the mean is that the mean may be skewed upwards by some very high incomes at the very top of the distribution. This may be a reason why the poverty measures based on a proportion of the mean deviates from those based on the proportion of the median income during the latter part of the 1990s. It is also reasonable to argue that what is happening at the top of distribution should not affect the measurement of poverty. A poverty measure less sensitive to such effects is one based on a proportion of the median, the point in the middle of the distribution.

Table 1 (see also Tables A1 and A2) gives our estimates of income poverty in Finland for various poverty measures and for different poverty lines (40 per cent, 50 per cent and 60 per cent of median income). All three measures and three poverty lines indicate a significant increase in income poverty between 1990 and

1998. We find that the head-count index of poverty (H) increased from 2.5 per cent to 3.9 per cent by 1998 poverty line being 50% of median, and from 6.7 to 8.9 per cent poverty line being 60% of median. Thus the rise in headcount index (H) indicates that there were more people by the end of the decade than there had been in the beginning. The poverty gap measure (HI) in turn indicates that the aggregate income shortfall of the poor increased 35.2% (poverty line being 50% of median). What is striking about Table 1 is that whether the poverty line is set at 40%, 50% or 60% of national median income, not only the number below the line have risen dramatically since the beginning of the 1990s but poverty has also become more severe. In addition, the aggregate poverty gap grew by proportionately slightly less than the head count index (35.2% versus 51.6% poverty line being $\frac{1}{2}$ of median). Finally, the 21.7% (31.7%) rise in P_2 (poverty line being 50% (60%) of median) suggests that incomes among the poor were also distributed more unequally.

Table 1 Aggregate Poverty Measures (per cent of median), Finland, 1990, 1993 and 1998¹

Income poverty

Poverty index	1990			1993			1998		
	Poverty line			Poverty line			Poverty line		
	40 %	50 %	60 %	40 %	50 %	60 %	40 %	50 %	60 %
H	1.01	2.54	6.72	1.10	2.50	5.29	1.36	3.85	8.85
HI	0.27	0.54	1.17	0.33	0.60	1.13	0.33	0.73	1.60
P2	0.14	0.23	0.41	0.16	0.26	0.44	0.15	0.28	0.54

Consumption poverty

Poverty index	1990			1994-1996			1998		
	Poverty line			Poverty line			Poverty line		
	40 %	50 %	60 %	40 %	50 %	60 %	40 %	50 %	60 %
H	1.37	4.59	10.02	1.09	3.81	8.96	1.60	4.84	11.82
HI	0.23	0.74	1.80	0.16	0.60	1.54	0.29	0.81	2.09
P2	0.06	0.20	0.52	0.05	0.16	0.42	0.08	0.24	0.60

¹ For purposes of comparison between income and consumption we use 1998 as the latest year.

Are our quantitative results on the change in poverty over this period robust to the choice of an indicator of the standard of living? An alternative yardstick is to

use consumption expenditure as the measure of standard of living. Spending as a measure of standard of living may better capture the longer-term aspects of households' well-being. From Table 1 we see that the number of households with spending below half the median expenditure in 1990, 1994-1996 and 1998 was more than the number whose disposable incomes were below 40 per cent and 60 per cent of the median. In other words over the whole of the 1990s, there were actually more people living below the consumption-based poverty lines than below income-based ones.⁷ The 43% rise in consumption based P_2 measure during the latter part of the 1990s tells that consumption expenditures among the poor were also distributed more unequally in the end of the 1990s than in the beginning of the decade. Both the income and consumption expenditure measures showed a similar rate of growth over the 1990s.

Are the quantitative results robust to the choice of poverty line and measure? The application of the dominance test is illustrated in Figure 5 where the range of possible poverty lines is taken from 40 to 60 per cent of the median. The curve for 1998 is everywhere above that for 1990. Thus we can agree on the direction of the change - economic (income and consumption expenditure) poverty has increased – even if we do not agree where in that range the poverty line is located. In other words the first-order dominance conditions holds, and so one can conclude that all well-behaved poverty measures and all possible poverty lines will show an unambiguous increase in aggregate poverty between two dates.

It may also be of interest to explore the socio-economic status composition of those in the poorest group. For this purpose we use the decomposable property of P_a . In other words we can decompose aggregate poverty into its constituent parts.

⁷ We are planning further work to gain a better understanding of the driving forces of these trends in the income and consumption expenditure poverty.

First, we consider the population split into 8 socio-economic subgroups in Table 2. Using the Head count measure, H , we look at those with below 40, 50 and 60

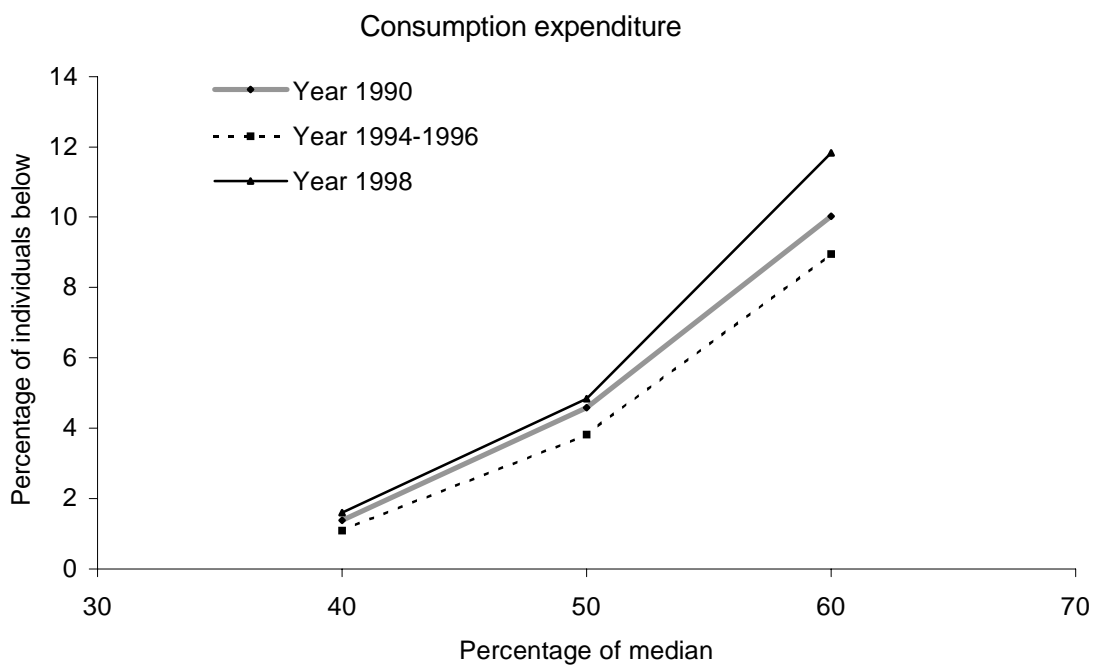
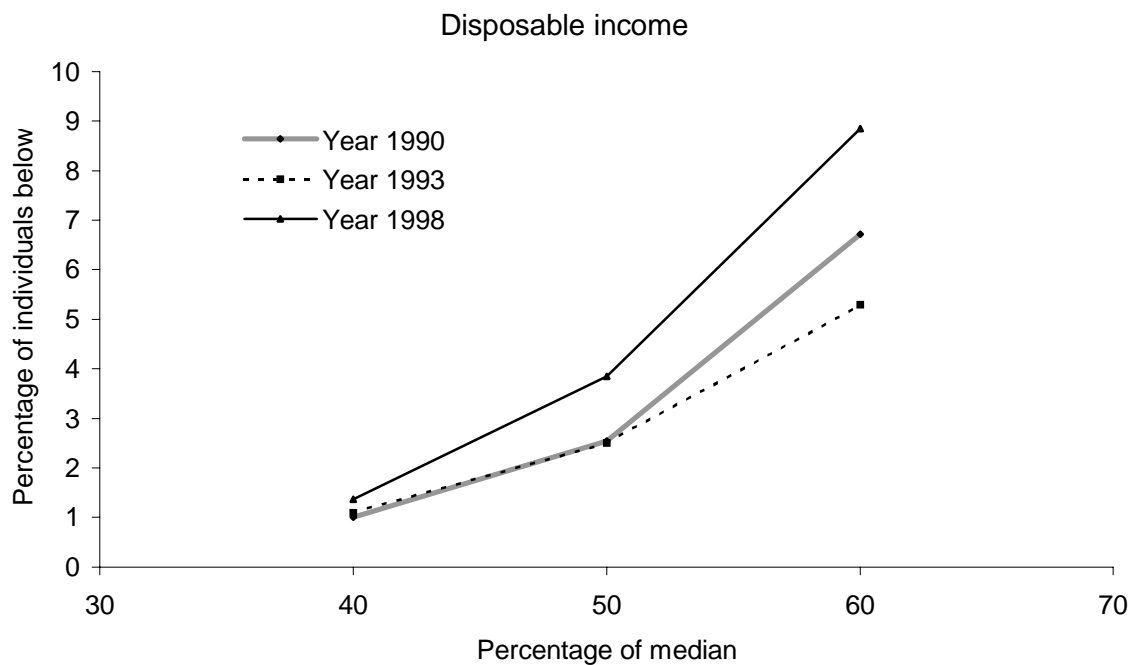


Figure 5 *First-Order Dominance (FOD) from median*

per cent of median income in years 1990 and 1998. The changes between these dates are the most interesting in terms of composition. In 1990 the three most ‘over-represented’ subgroups were pensioners, entrepreneurs and others. Over the period since 1990, the biggest change was the major deterioration in the position of unemployed households. In 1990 6%, 4% and 4% (with different poverty lines) of unemployed households are found below those poverty lines. In 1998 the corresponding figures are 31%, 31% and 26%.

Table 2 *Subgroup poverty contributions in 1990 and 1998; Head count measure (H, %)*

Income poverty

Population group ¹	1990			1993			1998		
	Poverty line			Poverty line			Poverty line		
	40 %	50 %	60 %	40 %	50 %	60 %	40 %	50 %	60 %
Farmers	13.35	11.07	8.76	6.38	5.31	7.63	4.32	7.27	6.60
Entrepreneurs	24.42	15.82	11.71	30.08	24.32	16.55	23.59	13.45	10.17
White collars	0.58	1.51	2.22	0.00	0.00	0.42	0.00	0.91	1.71
Blue collars	3.03	4.15	6.63	1.22	4.87	4.87	1.36	3.61	8.74
Workers	5.85	14.72	19.82	0.91	3.42	9.32	2.39	9.75	14.27
Pensioners	14.31	21.71	30.89	0.00	2.38	8.46	2.88	8.77	12.58
Unemployed	6.05	4.09	3.86	19.49	29.03	27.23	31.19	30.70	25.96
Others	32.42	26.93	16.11	41.92	30.68	25.51	34.27	25.54	19.97
Total	100.0	100.0	100.0	100.0	100.0	100.0	100.0	100.0	100.0

Consumption poverty

Population group ¹	1990			1994-1996			1998		
	Poverty line			Poverty line			Poverty line		
	40 %	50 %	60 %	40 %	50 %	60 %	40 %	50 %	60 %
Farmers	7.04	6.00	9.12	15.24	8.70	7.55	1.97	3.29	2.82
Entrepreneurs	0.67	1.95	3.37	2.79	2.06	2.97	7.78	3.77	3.12
White collars	0.18	0.53	2.34	0.00	1.30	3.41	4.79	2.22	3.87
Blue collars	3.90	5.75	8.33	6.78	3.56	7.47	2.85	3.88	5.13
Workers	17.89	25.01	25.04	8.56	16.71	16.92	11.47	26.59	30.99
Pensioners	61.23	53.16	44.69	43.37	40.25	36.75	39.17	31.97	31.26
Unemployed	3.85	1.77	1.25	17.93	23.09	19.17	10.93	15.02	12.92
Others	5.24	5.84	5.85	5.34	4.32	5.76	21.05	13.27	9.88
Total	100.0	100.0	100.0	100.0	100.0	100.0	100.0	100.0	100.0

¹ We call shortly Employers and own account workers in agriculture as Farmers, Other entrepreneurs and own-account workers as Entrepreneurs, Upper-level salaried employees as White collars and Lower-level salaried employees as Blue collars. It was not possible to separate students to own group in the HBS.

Table 3 *Poverty profile by the age of the household head*

Population group	Year	Population share by household type (%)	OECD-scale, 50 per cent of median ¹				Modified scale, 60 per cent of median ¹			
			(1)	(2)	(3)	(4)	(1)	(2)	(3)	(4)
Under 25 years	1990	5.3	11.6	24.2	2.8	1.1	21.8	14.3	6.3	2.7
	1993	4.7	15.3	28.6	4.7	2.2	30.2	22.6	9.2	4.4
	1996	4.8	21.6	35.8	4.9	1.8	44.9	26.8	11.8	4.7
	1999	5.1	17.7	25.5	4.4	2.0	40.1	21.4	9.9	4.2
25-34- years	1990	22.6	2.2	19.4	0.4	0.1	4.8	13.3	0.9	0.3
	1993	21.0	3.1	26.3	0.6	0.2	6.3	20.9	1.3	0.4
	1996	19.7	2.9	19.6	0.5	0.2	7.2	17.7	1.3	0.4
	1999	17.6	3.5	17.3	0.6	0.2	9.7	17.9	1.4	0.5
35-44- years	1990	31.9	1.8	22.3	0.4	0.2	3.4	13.6	0.8	0.3
	1993	29.5	1.9	22.5	0.4	0.2	4.9	23.0	0.8	0.3
	1996	27.8	2.6	25.1	0.4	0.1	5.8	20.0	1.0	0.3
	1999	27.6	3.4	26.5	0.5	0.2	7.1	20.3	1.3	0.4
45-54- years	1990	16.9	1.4	9.6	0.3	0.1	4.1	8.6	0.8	0.3
	1993	20.7	1.9	15.9	0.5	0.2	3.6	11.9	1.0	0.4
	1996	22.6	1.3	10.2	0.3	0.1	5.1	14.4	0.8	0.3
	1999	23.8	2.6	17.3	0.5	0.2	6.7	16.7	1.3	0.5
55-64- years	1990	10.8	2.8	11.8	0.6	0.2	10.7	14.3	1.9	0.6
	1993	10.8	1.4	6.0	0.3	0.2	4.7	8.1	0.8	0.3
	1996	11.3	1.0	3.9	0.2	0.1	5.6	7.9	0.9	0.2
	1999	11.5	2.9	9.3	0.6	0.2	7.7	9.3	1.5	0.5
65-74- years	1990	7.5	2.4	6.9	0.5	0.3	18.0	16.7	2.5	0.7
	1993	8.1	0.2	0.6	0.0	0.0	4.4	5.6	0.3	0.0
	1996	8.2	1.0	2.8	0.2	0.0	5.3	5.4	0.6	0.2
	1999	8.3	0.7	1.7	0.2	0.1	7.6	6.6	0.9	0.2
over 74 years	1990	4.9	2.9	5.7	0.5	0.2	31.1	19.1	4.7	1.1
	1993	5.3	0.0	0.0	0.0	0.0	9.3	7.9	0.8	0.1
	1996	5.5	1.4	2.6	0.1	0.1	11.4	7.8	1.4	0.3
	1999	6.0	1.5	2.5	0.4	0.1	12.5	7.8	1.8	0.5

¹ (1) *H*, (2) Contribution to aggregate poverty (%), (3) *HI*, (4) *P2*

The incidence of poverty is also on a rather different set of people under the expenditure measure. Using expenditure as the living standard measure leads to many more pensioners and fewer households of working age being classified as poor. This is because pensioners' spending tends to be low compared with the average. On the other hand there are a considerable number of low-income non-pensioner households whose spending is relatively high.

Table 4 Poverty profile by the stage of life cycle of the household

Population group	Year	Population share by household type (%)	OECD-scale, 50 per cent of median ¹				Modified scale, 60 per cent of median ¹			
			(1)	(2)	(3)	(4)	(1)	(2)	(3)	(4)
One-person households (under 65 years)	1990	9.6	7.3	27.6	1.8	0.8	21.7	25.9	5.4	2.2
	1993	10.6	8.3	35.4	2.4	1.2	19.5	33.0	5.5	2.5
	1996	11.6	9.7	39.0	2.1	0.8	26.7	38.4	6.5	2.5
	1999	11.7	7.7	25.4	2.0	0.8	24.8	30.3	5.8	2.3
Single-parent households (under 65 years)	1990	7.2	4.4	12.6	0.6	0.2	8.8	7.9	1.6	0.5
	1993	7.8	5.0	15.7	1.0	0.3	10.2	12.7	1.9	0.6
	1996	8.2	2.4	6.7	0.3	0.1	7.7	7.8	1.0	0.2
	1999	7.9	6.5	14.5	1.3	0.4	14.9	12.4	2.8	0.8
Childless couples (under 65 years)	1990	15.2	1.7	10.2	0.5	0.2	4.7	9.0	1.0	0.4
	1993	16.1	2.0	13.1	0.5	0.2	4.5	11.5	1.0	0.4
	1996	16.6	1.7	9.8	0.4	0.2	6.2	12.7	1.1	0.4
	1999	18.6	2.7	14.2	0.6	0.3	7.3	14.2	1.4	0.5
Couples with children	1990	52.4	1.7	35.4	0.4	0.1	3.2	20.6	0.6	0.2
	1993	50.4	1.7	34.3	0.4	0.1	3.5	27.8	0.6	0.2
	1996	48.5	2.4	40.3	0.4	0.1	4.9	29.5	0.8	0.2
	1999	45.7	3.1	39.7	0.5	0.2	6.0	28.3	0.9	0.3
One-person, single-parent and childless couples over 64 years	1990	11.2	2.3	9.9	0.4	0.2	23.9	33.3	3.4	0.9
	1993	11.5	0.0	0.0	0.0	0.0	6.8	12.4	0.5	0.1
	1996	12.0	0.7	2.9	0.1	0.1	7.0	10.5	0.8	0.2
	1999	12.8	0.9	3.2	0.3	0.1	9.5	12.7	1.3	0.3
Others	1990	4.2	2.6	4.3	0.4	0.1	6.2	3.3	1.0	0.3
	1993	3.5	1.1	1.5	0.1	0.0	4.6	2.6	0.5	0.1
	1996	3.1	1.3	1.4	0.3	0.1	3.0	1.1	0.5	0.2
	1999	3.3	3.2	2.9	0.4	0.1	6.3	2.1	1.1	0.3

¹ (1) *H*, (2) Contribution to aggregate poverty (%), (3) *HI*, (4) *P2*

The breakdown by socio-economic group is only one of numerous possible way of decomposing the population to reveal its constituent parts and their contribution to the overall picture of poverty. If we divide the population into 10-year age-groups, divided according to the age of the head of the households, we can see very little variations in the level of contribution to aggregate poverty (see Table 3). Only among those households with the head in the age group 45-54 over the 1990s an increase in the contribution to aggregate poverty is remarkable. The high rate of unemployment among this age group is the main reason for this trend. Similar analysis dividing the population according to family types will be presented in Table 4. Perhaps surprisingly we see relatively little variation in the level of contribution to aggregate poverty of different family types over the

1990s. Table 5 (students as a separate group) does appear to indicate that students is the group most at risk of poverty during the 1990s. This may be misleading because the IDS and HBS data sets don't provide information on the extent of income and other support students received from their parents.

Table 5 *Poverty profile by the socioeconomic status of the household head*

Population group	Year	Population share by household type (%)	OECD-scale (50 %) of median ¹				Modified scale (60 %) Of median ¹			
			(1)	(2)	(3)	(4)	(1)	(2)	(3)	(4)
Employers and own-account workers in agriculture	1990	5.7	4.9	11.1	1.3	0.6	8.2	5.8	2.1	0.9
	1993	4.8	2.8	5.3	0.5	0.2	6.8	5.2	1.1	0.4
	1996	4.5	4.1	6.4	0.8	0.3	7.8	4.4	1.5	0.5
	1999	3.4	5.3	5.0	1.4	0.5	7.8	2.7	2.2	0.9
Other entrepreneurs and own-account workers	1990	7.4	5.4	15.8	1.7	0.8	8.7	8.1	2.5	1.2
	1993	6.6	9.2	24.3	2.9	1.5	12.1	12.7	4.1	2.1
	1996	6.3	7.0	15.2	2.0	1.0	10.2	8.5	3.1	1.5
	1999	7.1	6.9	13.8	2.1	1.1	10.5	7.8	3.2	1.6
Upper-level salaried employees	1990	16.2	0.2	1.5	0.1	0.0	0.7	1.5	0.1	0.1
	1993	15.0	0.0	0.0	0.0	0.0	0.2	0.4	0.0	0.0
	1996	15.8	0.5	2.7	0.1	0.0	1.3	2.5	0.2	0.0
	1999	17.8	0.1	0.3	0.0	0.0	0.6	1.1	0.1	0.0
Lower-level salaried employees	1990	19.4	0.5	4.1	0.1	0.0	2.1	5.1	0.3	0.1
	1993	19.9	0.6	4.9	0.1	0.0	1.4	4.5	0.2	0.1
	1996	19.1	0.9	6.1	0.1	0.0	2.9	6.8	0.4	0.1
	1999	19.1	0.8	4.5	0.1	0.0	2.2	4.4	0.3	0.1
Workers	1990	30.1	1.2	14.7	0.2	0.1	3.0	11.3	0.5	0.1
	1993	22.3	0.4	3.4	0.0	0.0	1.7	6.0	0.2	0.1
	1996	23.1	0.5	4.2	0.1	0.0	2.3	6.7	0.3	0.1
	1999	23.5	0.9	5.7	0.1	0.0	4.3	10.4	0.4	0.1
Students	1990	1.2	39.7	19.3	9.2	3.6	63.3	9.7	20.9	9.3
	1993	1.9	29.5	22.6	8.8	4.1	53.1	16.2	16.6	8.0
	1996	2.4	30.5	24.7	7.6	3.1	61.6	18.0	18.2	7.8
	1999	2.4	38.0	25.3	9.6	4.1	71.5	17.6	18.9	8.4
Pensioners	1990	18.4	3.0	21.7	0.5	0.2	22.5	51.2	3.3	0.9
	1993	19.8	0.3	2.4	0.0	0.0	6.2	19.5	0.5	0.1
	1996	20.9	1.1	7.9	0.1	0.1	7.9	20.4	0.9	0.2
	1999	20.3	1.6	9.0	0.3	0.1	10.5	22.3	1.4	0.4
Unemployed	1990	0.6	16.6	4.1	4.4	1.7	43.3	3.4	10.6	4.0
	1993	8.0	9.1	29.0	1.5	0.5	21.8	27.8	4.1	1.3
	1996	6.8	10.8	25.5	1.1	0.2	34.1	28.9	5.3	1.3
	1999	5.1	19.3	27.7	2.9	0.9	53.6	28.5	9.3	2.7
Others	1990	0.9	22.5	7.7	4.7	2.1	37.7	4.0	9.2	4.1
	1993	1.8	11.4	8.1	3.9	1.8	26.8	7.6	7.0	3.2
	1996	1.2	17.5	7.3	3.6	1.1	28.5	4.2	7.6	2.8
	1999	1.3	23.4	8.7	3.4	1.0	37.7	5.2	7.8	2.5

¹ (1) *H*, (2) Contribution to aggregate poverty (%), (3) *HI*, (4) *P2*

The advantage of using a range of lines is that the poverty measure obtained from single line may be sensitive to precise positioning of that line. Figures A1 - A4 illustrate this point. Figures show the distribution of disposable income for each of our eight socio-economic groups together with a vertical line indicating half mean income. For some groups, such as farmers, entrepreneurs and white collars, the precise location of the poverty line will have relatively little effect on the numbers within the group appearing in poverty. The reason is simply that the incomes of these groups are relatively evenly spread and no particular poverty line has any significance for them. As we can see from Figures A1 - A4 this is not the case for group such as unemployed whose incomes are highly concentrated around level, which is about half mean income. Thus a slightly lower poverty line would take unemployed households out of measured poverty, whereas a slightly higher line would bring many in.

4. Conclusions

We have examined recent trends in the poverty in Finland using two data sources, the IDS and the HBS. We have drawn on the recent literature on poverty analysis to analyse a range of poverty measures, using dominance conditions to rank the distributions of living standards. As regards trends in poverty over time, the long-run perspective available from the HBS indicates that from the early 1970s to the beginning of 1990s, the relative poverty rate has declined. The latter part of the 1990s was clearly different. We find that poverty rose and became more severe over the period 1995-1999 for a very broad class of poverty measures and a wide range of poverty lines. Whilst the total numbers in poverty during the 1990s on these various definitions have risen markedly, the composition of the poor has also changed significantly. There is little doubt that unemployed households are the most vulnerable group of the population.

It is obvious that this is not the whole story about poverty. Our study has been based on a series of snapshots of the income and consumption distributions. It makes possible to address questions such as how many people are poor and what sort of individuals are poor at a given point in time. It does not tell how long are people poor. An important area of future research is to look at the dynamic properties of the income and consumption distributions.

References

- Ahlqvist, K. and A. Pajunen (2000), Changes in Household Consumption Expenditure in the 1990s. Statistics Finland, *Income and Consumption* **2000:28**, Helsinki. (in Finnish with English summary).
- Atkinson, A. B. (1987), On the Measurement of Poverty, *Econometrica* **55**, 749-64.
- Atkinson, A. B. (1998), Poverty in Europe, Blackwell, Oxford.
- Atkinson, A. B. (2000), A European Social Agenda: Poverty Benchmarking and Social Transfers, CAE (mimeo).
- Besley, T. and R. Kanbur (1988), Food Subsidies and Poverty Reduction, *The Economic Journal* **98**, 701-19.
- Danziger, S. and M. Jäntti (2000), Income Poverty in Advanced Countries, 309-73, Handbook of Income Distribution Vol. I eds. Atkinson-Bourguignon, North-Holland.
- Economic Council (2001), Labour Market Exclusion, Income Distribution and Poverty, Working Group Report. Prime Minister's Office: Publications, Helsinki (forthcoming).
- Foster, J., J. Greer and E. Thorbecke (1984), A Class of Decomposable Poverty Measures, *Econometrica*, **52**, 761-66.
- Foster, J. (1984), On Economic Poverty: A Survey of Aggregate measures, *Advances in Econometrics* **3**, 215-251.
- Foster, J. and A. Shorrocks (1988), Poverty orderings, *Econometrica* **56**, 173-77
- Kanbur, R. (1987), Measurement and Alleviation of Poverty, IMF Staff Papers 36, 60-85.
- Kanbur, R., M. Keen and M. Tuomala (1994), Labor Supply and Targeting in Poverty Alleviation Programs, *The World Bank Economic Review*, **8**, 191-211.
- Ravallion, M. (1994), Poverty Comparisons, Harwood Academic Publishers.

Riihelä, M., R. Sullström and M. Tuomala (2001), What lies behind the unprecedented increase in income inequality in Finland during the 1990s, *VATT Discussion Papers*, **247**.

Sen, A. (1976), Poverty: An Ordinal Approach to Measurement, *Econometrica* **44**, 211-31.

Sen, A. (1979), Issues in the Measurement of Poverty, *Scandinavian Journal of Economics*, **81**, 284-307.

Sen, A. (1985), A Sociological Approach to the Measurement of Poverty: A Reply to Professor Peter Townsend, *Oxford Economic Papers*, **37**, 669-676.

Suoniemi, I. and R. Sullström (1995), The Structure of Household Consumption in Finland, 1966-1990, *Research Reports* **27**, VATT, Helsinki.

Sullström, R. and M. Riihelä (1996), Indirect Taxes in the Finnish Tax System: An Analysis of the Effects of Taxes on the Households' Income Distribution in 1966-1990, *VATT Discussion Papers*, **120**.

Townsend, P. (1985), A Sociological Approach to the measurement of Poverty: A Rejoinder to Professor Amartya Sen, *Oxford Economic Papers*, **37**, 660-668.

Zheng, B. (1999), Aggregate Poverty Measures, *Journal of Economic Survey*, **11**, 123-161.

Watts, H. (1968), An Economic Definition of Poverty, in D. P. Moynihan (ed.) *On Understanding Poverty*, New York; Basic Books.

Appendices

Figure A1 Distribution of disposable income by socio-economic groups in 1990

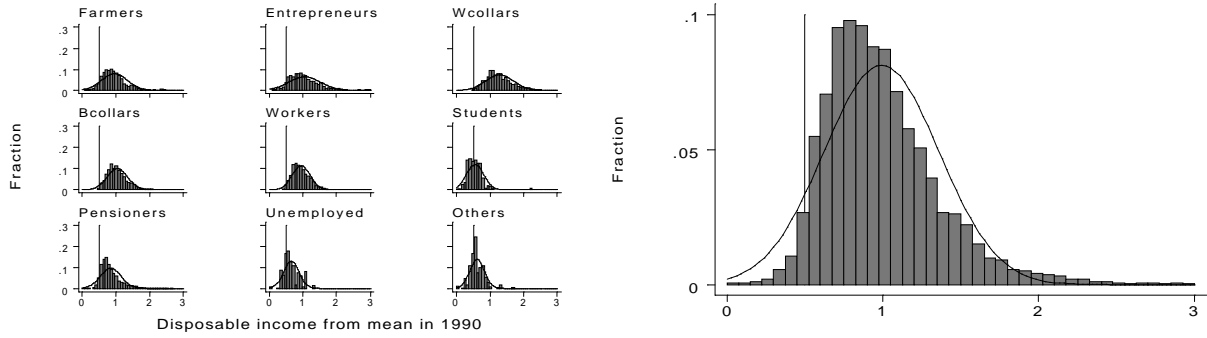


Figure A2 Distribution of disposable income by socio-economic groups in 1993

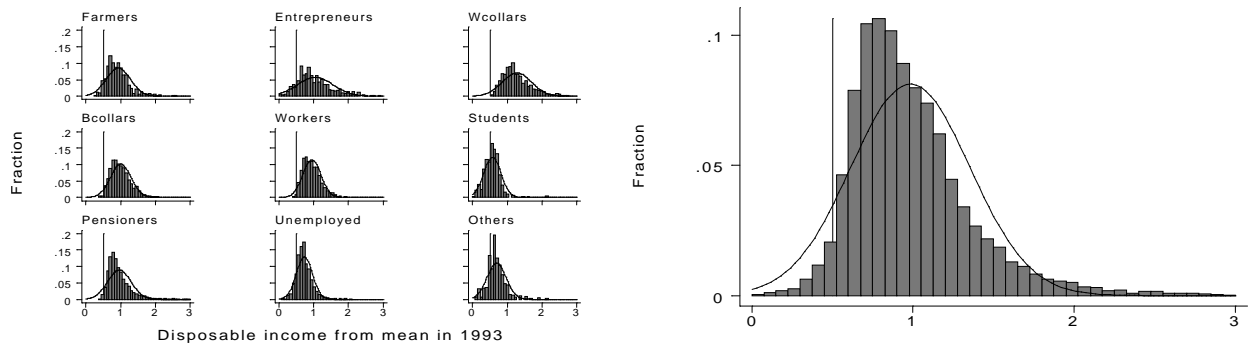


Figure A3 Distribution of disposable income by socio-economic groups in 1996

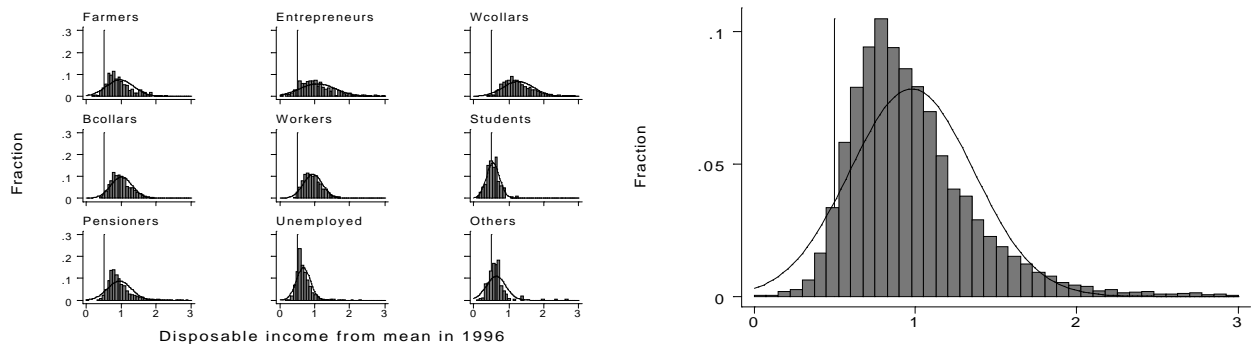


Figure A4 Distribution of disposable income by socio-economic groups in 1999

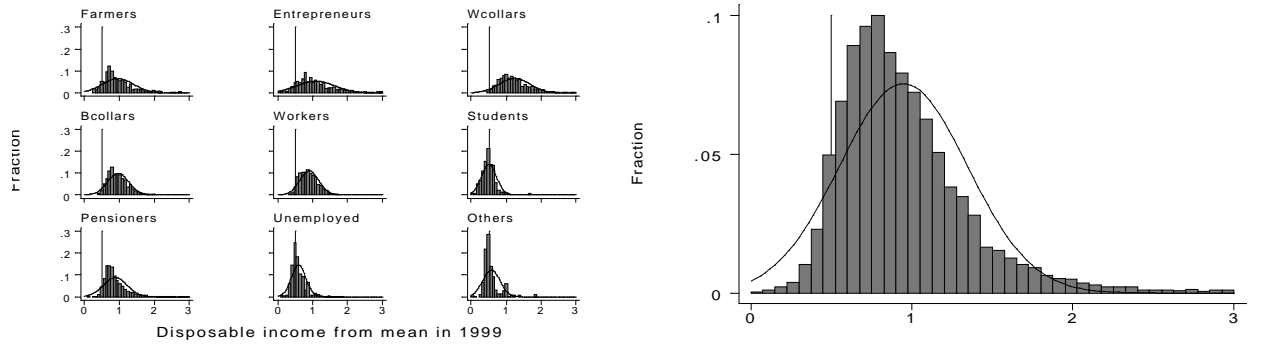


Table A1 Poverty rates of H, HI, P2 from mean and median by using OECD-scale in 1971-1999

Poverty rate %	Poverty measure	1971	1976	1981	1985	1990	1991	1992	1993	1994	1995	1996	1997	1998	1999
From median															
40	H	3.67	1.80	2.38	1.59	1.01	1.35	1.10	1.10	0.88	0.93	0.94	1.22	1.36	1.33
40	HI	1.07	0.43	0.76	0.51	0.27	0.36	0.29	0.33	0.23	0.21	0.23	0.29	0.33	0.33
40	P2	0.50	0.24	0.49	0.37	0.14	0.17	0.14	0.16	0.12	0.09	0.10	0.13	0.15	0.15
50	H	8.25	4.36	4.93	3.47	2.54	2.97	2.69	2.50	2.29	2.40	2.90	3.04	3.85	3.56
50	HI	2.07	0.93	1.32	0.87	0.54	0.69	0.57	0.60	0.47	0.47	0.54	0.63	0.73	0.71
50	P2	0.87	0.40	0.68	0.48	0.23	0.29	0.24	0.26	0.20	0.18	0.20	0.25	0.28	0.28
60	H	13.67	10.64	9.82	8.32	6.72	6.74	6.11	5.29	5.99	6.43	7.44	8.06	8.85	9.03
60	HI	3.52	1.99	2.30	1.65	1.17	1.35	1.17	1.13	1.03	1.06	1.26	1.40	1.60	1.58
60	P2	1.46	0.71	1.02	0.71	0.41	0.51	0.43	0.44	0.36	0.35	0.40	0.47	0.54	0.53
From mean															
40	H	6.24	2.28	2.74	1.86	1.27	1.66	1.32	1.51	1.22	1.31	1.45	1.85	2.16	2.24
40	HI	1.48	0.52	0.84	0.57	0.34	0.44	0.36	0.41	0.29	0.29	0.32	0.41	0.47	0.50
40	P2	0.66	0.27	0.51	0.39	0.16	0.20	0.17	0.19	0.14	0.12	0.13	0.18	0.20	0.21
50	H	11.41	5.74	5.87	4.35	3.67	4.02	3.58	3.62	3.36	3.82	4.51	5.44	6.19	7.00
50	HI	2.92	1.15	1.50	1.02	0.72	0.87	0.75	0.80	0.66	0.70	0.82	0.97	1.18	1.26
50	P2	1.21	0.46	0.74	0.53	0.28	0.36	0.30	0.33	0.25	0.25	0.28	0.35	0.41	0.44
60	H	19.89	13.03	11.84	10.39	10.27	9.71	8.81	9.03	9.05	10.26	11.85	13.15	15.16	15.82
60	HI	4.98	2.51	2.67	2.03	1.68	1.79	1.60	1.62	1.54	1.72	2.01	2.33	2.70	2.89
60	P2	2.04	0.86	1.14	0.82	0.55	0.64	0.55	0.59	0.50	0.53	0.61	0.73	0.86	0.92

Table A2 Poverty rates of H, HI, P2 from mean and median by using MOECD-scale in 1990-1999

Poverty rate %	Poverty measure	1990	1991	1992	1993	1994	1995	1996	1997	1998	1999
From median											
40	H	1.31	1.62	1.34	1.24	1.05	1.28	1.35	1.60	1.69	1.51
40	HI	0.34	0.43	0.36	0.37	0.28	0.28	0.31	0.35	0.41	0.40
40	P2	0.16	0.20	0.17	0.18	0.14	0.11	0.13	0.15	0.18	0.19
50	H	3.42	3.55	3.29	2.74	2.77	3.02	3.48	3.56	4.07	4.05
50	HI	0.72	0.85	0.72	0.69	0.59	0.62	0.70	0.77	0.86	0.83
50	P2	0.29	0.36	0.30	0.30	0.24	0.23	0.26	0.29	0.34	0.33
60	H	8.06	8.05	7.23	6.29	6.51	7.14	8.06	8.11	9.48	9.60
60	HI	1.53	1.62	1.44	1.28	1.22	1.31	1.50	1.56	1.79	1.78
60	P2	0.53	0.62	0.53	0.50	0.43	0.45	0.51	0.55	0.63	0.62
From mean											
40	H	1.67	2.08	1.68	1.74	1.53	1.68	1.90	2.19	2.50	2.48
40	HI	0.40	0.51	0.42	0.46	0.35	0.37	0.42	0.49	0.57	0.58
40	P2	0.18	0.23	0.19	0.21	0.16	0.15	0.17	0.20	0.24	0.25
50	H	4.49	4.52	4.12	3.83	3.84	4.38	4.91	5.46	6.49	7.03
50	HI	0.90	1.02	0.89	0.89	0.78	0.86	0.97	1.11	1.29	1.36
50	P2	0.34	0.41	0.35	0.38	0.30	0.31	0.34	0.41	0.47	0.49
60	H	10.79	10.01	9.52	9.16	9.71	11.00	11.87	13.41	15.29	16.29
60	HI	1.96	2.01	1.84	1.77	1.72	1.92	2.14	2.42	2.82	3.03
60	P2	0.66	0.74	0.65	0.66	0.58	0.63	0.70	0.81	0.94	0.99

**VATT-KESKUSTELUALOITTEITA / DISCUSSION PAPERS ISSN 0788-5016
- SARJASSA ILMESTYNEITÄ**

189. Ikonen Pasi: Further Testing of the Human-Capital Augmented Solow Model. Helsinki 1999.
190. Heikkilä Tuomo: Finnish Agricultural Support in Changes. Helsinki 1999.
191. Kuismanen Mika – Laakso Seppo – Loikkanen Heikki A.: Demographic Factors and the Demand for Housing in the Helsinki Metropolitan Area. Helsinki 1999.
192. Rahikainen Marjatta: Aikuiskoulutus Suomessa ja muualla Euroopassa. Helsinki 1999.
193. Mäki Tuomo – Romppanen Antti – Virén Matti: Julkisen velan hallinta eräissä EU-maissa. Helsinki 1999.
194. Koskela Erkki – Virén Matti: Is There a Laffer Curve Between Output and Public Sector Employment. Helsinki 1999.
195. Loikkanen Heikki A. – Parkkinen Pekka: Omavaraisen väestön Suomi. Helsinki 1999.
196. Viitamäki Heikki: Asumisen tuet vuosina 1990–1999. Helsinki 1999.
197. Mäkelä Pekka – Virtanen Sari (toim.): EU:n laajenemisen näköalat. Helsinki 1999.
198. Holm Pasi – Kiander Jaakko – Tossavainen Pekka: Social Security Funds, Payroll Tax Adjustment and Real Exchange Rate: The Finnish Model. Helsinki 1999.
199. Järviö Maija-Liisa – Luoma Kalevi: Kuntien terveydenhuoltomenot 1990–96 ja menokehitystä selittävät tekijät. Helsinki 1999.
200. Pirttilä Jukka – Tuomala Matti: On Optimal Non-Linear Taxation and Public Good Provision in Overlapping Generations Economy. Helsinki 1999.
201. Junka Teuvo: EU:n talousarvio. Helsinki 1999.
202. Holm Pasi – Romppanen Antti: Vuosien 1995 ja 1997 tulopoliittisten sopimusten työllisyysvaikutuksista. Helsinki 1999.
203. Koskela Erkki – Schöb Ronnie: Does the Composition of Wage and Payroll Taxes Matter Under Nash Bargaining? Helsinki 1999.
204. Virén Matti: Fiscal Policy, Automatic Stabilisers and Policy Coordination in EMU. Helsinki 1999.
205. Uusitalo Roope: Homo Entreprenaurus? Helsinki 1999.
206. Uusitalo Roope: Miten kävi hallitun rakennemuutoksen? Helsinki 1999.
207. Östring Timo: Statens budgetstyrning i de Nordiska länderna. Helsinki 2000.
208. Kari Seppo: Laskelmia vapaaehtoisen eläkevakuutuksen verotuksen tasosta. Helsinki 1999.
209. Holm Pasi – Tossavainen Pekka – Tuomala Juha – Valppu Pirkko: Työmarkkinoiden toimintaympäristön muutokset julkisen sektorin palkanmuodostuksen kannalta. Helsinki 1999.

210. Holm Pasi – Sinko Pekka – Tossavainen Pekka: Labour Market Policy and Unemployment – A Job Flow Model of Finland. Helsinki 1999.
211. Kajanoja Jouko: Syrjäytyminen, työvoiman tarjonta ja työllisyys. Helsinki 1999.
212. Rauhanen Timo: Kotitalouksille suunnattujen palvelujen arvonlisäverokannan alentaminen. Helsinki 1999.
213. Loikkanen Heikki A. – Riihelä Marja – Sullström Risto: Kaupunkien, taajamien ja maaseudun väliset tulo- ja kulutuserot. Helsinki 1999.
214. Ilmakunnas Seija: Yet Another Fiscal Indicator. Helsinki 2000.
215. Kauppila Jari: Hanhiauran seuraajasta johtajaksi – Japanin teollisuuspolitiikka 1860-1940 sekä jatkumo nykypäivään. Helsinki 2000.
216. Glazer Amihai – Niskanen Esko: Which Consumers Benefit from Congestion Tolls? Helsinki 2000.
217. Aronen Kauko: Kaupunkipoliittinen näkökulma alueiden väliseen tasaukseen. Helsinki 2000.
218. Luoma Kalevi – Järviö Maija-Liisa: Productivity Changes in Finnish Health Centres in 1988-1995: A Malmquist Index Approach. Helsinki 2000.
219. Kilponen Juha: On the Efficiency of Job and Income Protection in the Dynamic Labour Markets. Helsinki 2000.
220. Venetoklis Takis: Impact of Business Subsidies on Growth of Firms - Preliminary Evidence from Finnish Panel Data. Helsinki 2000.
221. Laakso Seppo: Asuntomarkkinoiden alueellinen kehitys Suomessa 1980- ja 1990-luvulla. Helsinki 2000.
222. Perrels Adriaan (ed.): Greenhouse Gas Policy Questions and Socio-Economic Research Implications for Finland in a National and International Context. Helsinki 2000.
223. Moilanen Paavo: Assessing the Effectiveness of Marginal Cost Pricing in Transport - the Helsinki Case. Helsinki 2000.
224. Hakola Tuulia: Navigating Through the Finnish Pension System. Helsinki 2000.
225. Tuomala Juha: Työttömien työmarkkinasiirtymät vuonna 1998. Helsinki 2000.
226. Korkeamäki Ossi – Kyyrä Tomi: Integrated Panel of Finnish Companies and Workers. Helsinki 2000.
227. Häkkinen Iida – Kirjavainen Tanja – Uusitalo Roope: School Resources and Student Achievement Revisited: New Evidence Using Panel Data. Helsinki 2000.
228. Perrels Adriaan – Weber Christoph: Modelling Impacts of Lifestyle on Energy Demand and Related Emissions. Helsinki 2000.
229. Hietala Harri: Suorien sijoitusten verorasituksen mittaamisesta. Helsinki 2000.
230. Virén Matti: How Sensitive is the Public Budget Balance to Cyclical Fluctuations in the EU? Helsinki 2000.
231. Ilmakunnas Seija – Kiander Jaakko – Parkkinen Pekka – Romppanen Antti: Globalisaatio ja työn loppu? Talous ja työllisyys vuoteen 2030. Helsinki 2000.

232. Mustonen Esko – Sinko Pekka: Hiilidioksidiveron vaikutus kotitalouksien tulonjakoon. Helsinki 2000.
233. Holm Pasi – Pankka Kari – Toivonen Seppo – Tykkyläinen Yrjö – Virén Matti: PK-yritysten turvallisuuskysely. Helsinki 2000.
234. Kiander Jaakko – Virén Matti: Do Automatic Stabilisers Take Care of Asymmetric Shocks in the Euro Area? Helsinki 2000.
235. Kiander Jaakko – Kilponen Juha – Vilmunen Jouko: Taxes, Growth and Unemployment in the OECD Countries - does Collective Bargaining Matter? Helsinki 2000.
236. Venetoklis Takis: Methods Applied in Evaluating Business Subsidy Programs: A Survey. Helsinki 2000.
237. Siivonen Erkki: Pohjoinen ulottuvuus: Investointien rahoitukseen liittyviä näkökohtia. Helsinki 2000.
238. Kemppi Heikki – Pohjola Johanna: Hiilidioksidipäästöjen rajoittamisen kustannusten arvioinnissa käytetyt käsitteet ja mittarit. Helsinki 2000.
239. Virén Matti: Cross-Country Evidence on a Nonlinear Okun Curve. Helsinki 2000.
240. Pollari Johanna: Yhteistoteutuksen merkitys Suomen ilmastopolitiikassa. Helsinki 2000
241. Coenen Heide: Network Effects in Telecommunications: when Entrants are Welcome. Helsinki 2000.
242. Moisio Antti: Spend and Tax or Tax and Spend? Panel Data Evidence from Finnish Municipalities during 1985 - 1999. Helsinki 2000.
243. Coenen Heide – Holler Manfred J.– Niskanen Esko (eds.): 5th Helsinki Workshop in Standardization and Networks 13-14 August, 2000. Helsinki 2000.
244. Virén Matti: Modelling Crime and Punishment. Helsinki 2000.
245. Nash Chris – Niskanen Esko (eds.): Helsinki Workshop on Infrastructure Charging on Railways 31 July - 1 August, 2000. Helsinki 2000.
246. Parkkinen Pekka: Terveystieteiden ja sosiaalipalvelujen tuotevuoteen 2030. Helsinki 2001.
247. Riihelä Marja – Sullström Risto – Tuomala Matti: What Lies Behind the Unprecedented Increase in Income Inequality in Finland During the 1990's. Helsinki 2001.
248. Kangasharju Aki – Pekkala Sari: Regional Economic Repercussions of an Economic Crisis: A Sectoral Analysis. Helsinki 2001.
249. Kiander Jaakko – Luoma Kalevi – Lönnqvist Henrik: Julkisten menojen rakenne ja kehitys: Suomi kansainvälisessä vertailussa. Helsinki 2001.
250. Kilponen Juha – Sinko Pekka: Taxation and the Degree of Centralisation in a Trade Union Model with Endogenous Labour Supply. Helsinki 2001.
251. Vaitinen Risto: WTO:n kauppaneuvottelujen merkitys EU:n maataloudelle. Helsinki 2001.

252. Bjerstedt Katja: Työssä jaksamisesta ja työmarkkinoiden muutoksesta. Helsinki 2001.
253. Sinko Pekka: Unemployment Insurance with Limited Duration and Variable Replacement Ratio – Effects on Optimal Search. Helsinki 2001.
254. Rauhanen Timo: Arvonlisävero EU:n jäsenmaissa – voiko vientiä verottaa? Helsinki 2001.
255. Korkeamäki Ossi: Työttömyysriskiin vaikuttavat yksilö- ja yrityskohtaiset tekijät Suomessa 1990-1996. Helsinki 2001.
256. Kyyrä Tomi: Estimating Equilibrium Search Models from Finnish Data. Helsinki 2001.
257. Moisio Antti: On Local Government Spending and Taxation Behaviour – effect of population size and economic condition. Helsinki 2001.
258. Kari Seppo – Ylä-Liedenpohja Jouko: Klassillinen osakeyhtiövero kansainvälisen veroharmonisoinnin muotona. Helsinki 2001.
259. Kiander Jaakko – Vaittinen Risto: EU:n itälaajenemisen vaikutuksista: laskelmia tasapainomallilla. Helsinki 2001.
260. Hakola Tuulia – Uusitalo Roope: Let's Make a Deal – the Impact of Social Security Provisions and Firm Liabilities on Early Retirement. Helsinki 2001.
261. Hjerppe Reino – Kari Seppo – Lönnqvist Henrik (toim.): Verokilpailu ja verotuksen kehittämistarpeet. Helsinki 2001.
262. Hakola Tuulia – Lindeboom Maarten: Retirement Round-about: Early Exit Channels and Disability Applications. Helsinki 2001.
263. Kilponen Juha – Romppanen Antti: Julkinen talous ja väestön ikääntyminen pitkällä aikavälillä – katsaus kirjallisuuteen ja simulointeja sukupolvimallilla. Helsinki 2001.